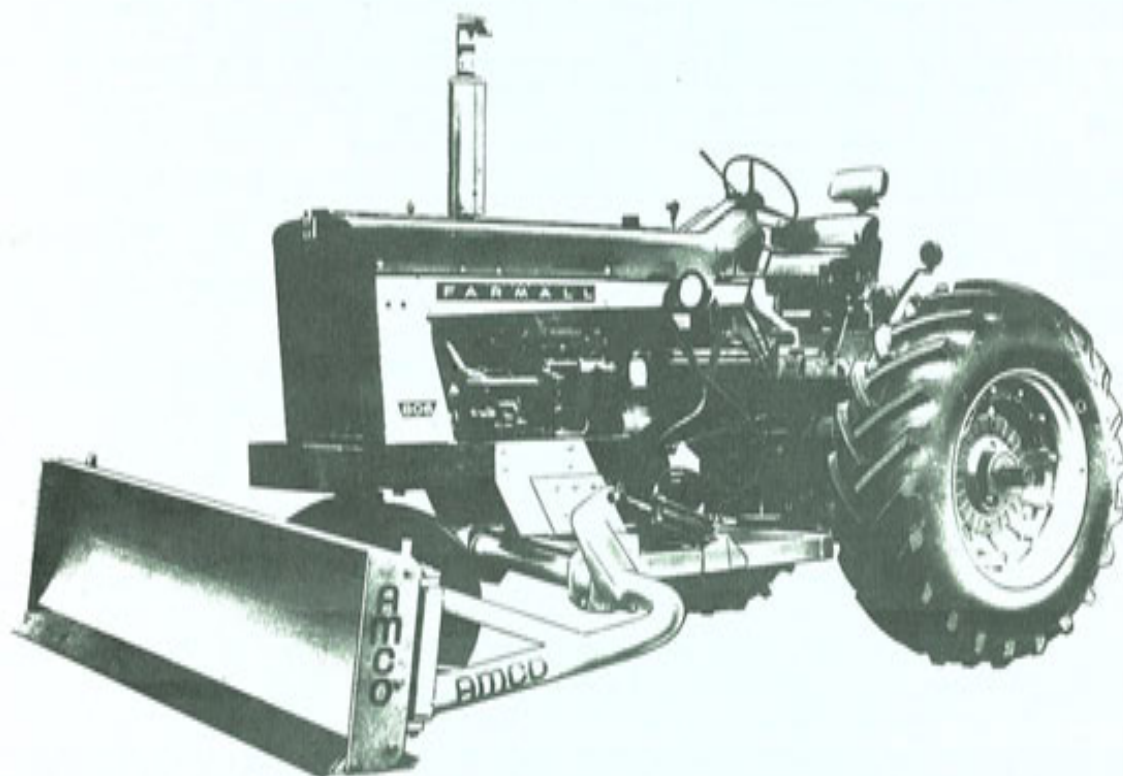


**OPERATING AND ASSEMBLY INSTRUCTIONS**

# **AMCO Dozer Blade**

**MODEL NO. 800 Straight, Tilt and Angle**



**EFFECTIVE DATE**

**NOVEMBER 1, 1967**

---

***Alexander Manufacturing Company***

*Manufacturers of Quality-Built Farm and  
Industrial Equipment*

**YAZOO CITY, MISSISSIPPI, USA**

**P. O. Box 107**

**Phone 746-4464**

TO THE CUSTOMER:

Alexander Manufacturing Company is happy to add your name to our growing list of AMCO Model 800 Farm Tractor Dozer Customers. This dozer was designed for general farm maintenance work with tractors of 60 to 85 horsepower. This dozer can be raised and lowered by a Heavy Duty 3½" to 4" bore ASAE Standard 8" Stroke hydraulic cylinder.

This operator's manual was prepared for your convenience. The mounting instructions will save you considerable time and effort in mounting the dozer on your tractor. The instructions on adjusting and operating the dozer will help you obtain the maximum benefit from the many features designed into your AMCO Model 800 Farm Tractor Dozer. Please read this operator's manual for your benefit.

Sincerely yours,

  
Alexander Manufacturing Company

## TABLE OF CONTENTS

	Page	
Model 800 Dozer Blade – Straight, Tilt and Angle .....	5	Fig. 1
Parts List .....	6	
Attaching To Tractor Instructions .....	7	
Instructions for Operation and Adjustment of the Model 800 Farm Tractor Dozer .....	8	
Maintenance Instructions .....	9	

### ACCESSORIES

Brush Rack .....	9	
------------------	---	--

### ATTACHING KITS

Parts List and Attaching Instructions for The IH 10 (IHC 706, 806) .....	11	Fig. 2
Parts List and Attaching Instructions for the IH 11 (IHC 656) .....	12	Fig. 3
Parts List and Attaching Instructions for the JD 20 (John Deere 3010, 3020, 4010, 4020) .....	13	Fig. 4
Parts List and Attaching Instructions for the AC 30 (Allis Chalmers 190, XT 190) .....	14	Fig. 5
Parts List and Attaching Instructions for the JC 40 (J. I. Case 730, 830) .....	15	Fig. 6
Parts List and Attaching Instructions for the JC 50 (J. I. Case 930) .....	16	Fig. 7
Parts List and Attaching Instructions for the JC 51 (J. I. Case 930 Standard) .....	17	Fig. 8
Parts List and Attaching Instructions for the BF 60 (Ford 6000 Row Crop) .....	18	Fig. 9
Parts List and Attaching Instructions for the MF 70 (Massey Ferguson 1100, 1130) .....	19	Fig. 10
Parts List and Attaching Instructions for the MF 71 (Massey Ferguson 90, Super 90) .....	20	Fig. 11
Parts List and Attaching Instructions for the MM 80 (Minneapolis Moline 670, 670 Super) .....	21	Fig. 12
Parts List and Attaching Instructions for the OC 90 (Oliver 1800, 1850) .....	22	Fig. 13

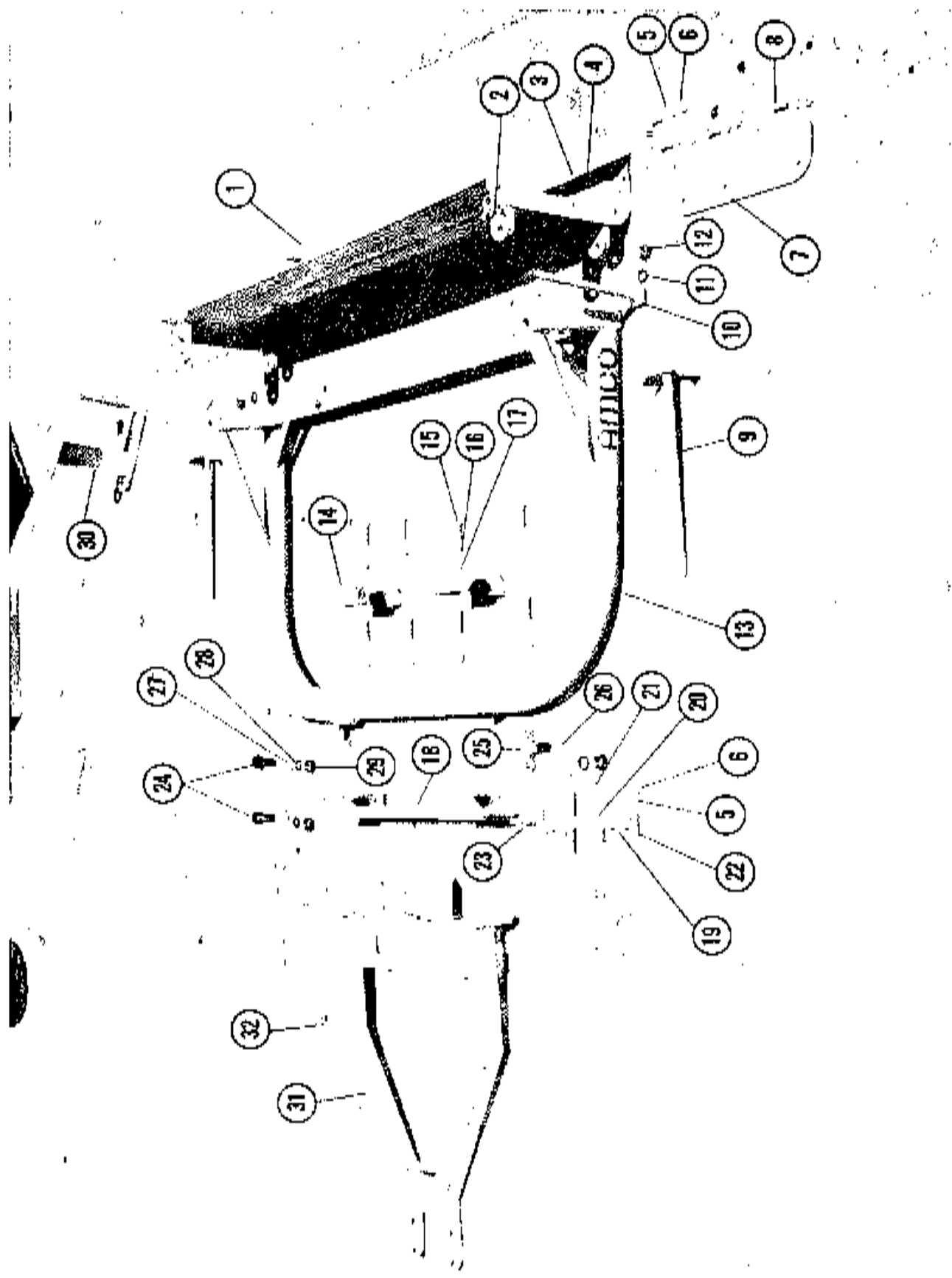


FIG. 1

AMCO DOZER BLADE - MODEL 800

**PARTS LIST**  
**AMCO MODEL 800 DOZER BLADE**

Ref. No.	Description	Part Number	No. Req.
1	Blade, Mold Board	1578	1
2	Set Screw 5/8 x 1 1/2 NC	10137	4
3	Mold Board - Edge -	6719	1
4	Plow Bolt 5/8 x 1 1/2 NC	10662	7
5	Lock Washer 5/8 (Plated)	11002	7
6	Hex Nut 5/8 (Plated) HT	10668	7
7	End Plate	6720	2
8	Carriage Bolt 5/8 x 1 1/2 NC (Plated)	10680	8
	Lock Washer 5/8 (Plated)	11002	8
	Hex Nut 5/8 NC (Plated) HT	10668	8
9	Depth Gauge	1579	2
10	Bolt-Anchor	1580	2
11	Lock Washer 1 1/4	10192	2
12	Hex Nut 1 1/4 NC	10149	2
13	Main Frame	1649	1
14	Bearing Cap	1581	2
15	Machine Bolt 3/4 x 2 NC (Plated) HT	10670	8
16	Lock Washer 3/4 (Plated)	10061	8
17	Hex Nut 3/4 NC (Plated) HT	10669	8
18	Bearing Journal	1582	1
19	Adjusting Leg	1583	1
20	Guide Sleeve	1584	1
21	Grease Fitting	10721	3
22	Machine Bolt 5/8 x 2 NC (Plated)	10239	2
	Lock Washer 5/8 (Plated)	11002	2
	Hex Nut 5/8 NC (Plated) HT	10668	2
23	Adjusting Leg Anchor	1585	1
	Transport Bar (Not Shown)	1856	1
	Transport Bar (Not Shown)	1857	1
	Rivet 1 x 3	10099	4
	Klik Pin 3/4	10317	4
24	Pivot Bolt	1586	2
25	Anchor Bolt	1587	1
25	Washer (Fab.)	6751	1
27	Cut Washer 1-3/8	10229	2
28	Lock Washer 1-3/8	10673	3
29	Hex Nut 1-3/8 SAE	10088	3
30	Angle Bracket	1589	1
31	Frame Carriage	1650	1
32	Cylinder Bracket	1651	1
	Machine Bolt 3/4 x 6 NC	10676	4
	Lock Washer 3/4 (Plated)	10061	4
	Hex Nut 3/4 NC (Plated)	10072	4

## INSTRUCTIONS FOR ATTACHING THE AMCO MODEL 800 FARM TRACTOR DOZER TO THE TRACTOR

I. The mounting kit should already be attached to the tractor as described in mounting kit attaching instructions.

### II. Instructions for Attaching the Assembled Dozer to the Tractor:

Drive the tractor's front wheels over the "C" frame (Fig. 1 No. 13). The tractor's front wheels should be inside the "C" frame and the holes in the front mount plates should be over the mounting holes in the dozer carriage frame (Fig. 1 No. 34). Lift the front of the carriage frame and insert one 5/8" diameter carriage bolt through the front mount plate and carriage frame mounting plate. Repeat this procedure by placing a bolt through the mount plate and carriage frame mounting plate on the opposite side of the tractor. Tighten the two bolts hand tight.

Lift the rear of the carriage frame and attach it to the rear mount bracket that was previously mounted on the tractor. Use the 7/8" diameter bolts supplied with the mounting kit for this operation. Tighten the bolts hand tight.

Insert five 5/8" diameter carriage bolts through the left front mount plate and the carriage frame mounting plate and tighten these bolts hand tight. Repeat this procedure on the right side but be sure and mount the adjusting leg anchor (Fig. 1 No. 23) on the two bolts near the upper rear portion of the right front mount plate. The adjusting leg and guide sleeve (Fig. 1 No. 19, 20) should now be mounted on the right front of the carriage frame (Fig. 1 No. 34).

### III. Instructions for Attaching the Partially Assembled Dozer to the Tractor:

After the dozer has been mounted on the tractor, the dozer can be disassembled at the bearing caps (Fig. 1 No. 14). The carriage frame can be left on the tractor and the tractor can be used for other jobs.

To remount the "C" frame, drive the tractor over the "C" frame. Then replace the bearing caps and tighten all bolts securely.

### IV. Instructions for Attaching the Hydraulic Cylinder:

**Note:** The hydraulic cylinder and hoses are not furnished as standard equipment with the AMCO Farm Tractor Dozer.

The AMCO Farm Tractor Dozer is designed to be raised and lowered by an ASAE Standard 8" stroke hydraulic cylinder. The cylinder should be double acting and have a diameter of 3 to 4 inches. The rod diameter should be at least one and one half inches. The cylinder and hoses must be designed to withstand pressures of 2500 lbs. per square inch.

Pushing the hydraulic control lever forward should lower the dozer blade. If this raises the blade, swap the hoses on the tractor's hydraulic fluid outlets. Pushing the control lever forward should lower the dozer blade and pulling the lever to the rear should raise it.

**CAUTION:** Be sure and thoroughly tighten all bolts before operating the dozer.

## INSTRUCTIONS FOR OPERATION AND ADJUSTMENT OF THE AMCO MODEL 800 FARM TRACTOR DOZER

### I. Cutting Depth:

The cutting depth of the dozer is regulated by the hydraulic cylinder. In addition to the hydraulic cylinder, the AMCO Model No. 800 Farm Tractor Dozer has a set of two depth gauges (Fig. 1 No. 9) as standard equipment. These depth gauges can be used to keep the dozer from going too deep at the beginning of a cut. Also, the depth gauges can be used when scraping a feed lot or on many other dozing jobs.

The height of the depth gauge is regulated by loosening the set screws at the upper outside corners of the moldboard (Fig. 1 No. 2) sliding the depth gauge to the desired setting and tightening the set screws.

### II. Tilting the AMCO Model No. 800 Farm Tractor Dozer:

The AMCO Model No. 800 Farm Tractor Dozer Blade can be tilted about eight inches to the right or left. Before tilting the dozer, loosen the 1-3/8" diameter slide bolt on the right front corner of the carriage frame (Fig. 1 No. 25) then loosen the two pivot bolts on the left front corner of the carriage frame (Fig. 1 No. 24). Tilt the blade with the screw jack, located on the right side of the bearing journal (Fig. 1 No. 19 & 20).

**CAUTION:** Be sure and thoroughly tighten the slide bolt and pivot bolt before operating the dozer.

### III. Angle Bracket: (Fig. 1 No. 33)

The bracket can be used to angle the dozer to the right or left. To mount the bracket, lift the dozer to the highest position. Remove the bolt that holds the moldboard to the "C" frame on the side you wish to mount the bracket (Fig. 1 No. 10). Loosen the set screws that hold the depth gauge in place (Fig. 1 No. 2). Swing the moldboard out from the "C" frame and remove the depth gauge (Fig. 1 No. 9). Place the angle bracket between the mounting lugs on the moldboard and replace the depth gauge sliding it up through the holes in the angle bracket. Mount the other end of the bracket to the "C" frame with the anchor bolt (Fig. 1 No. 10).

It is not necessary to completely remove the angle bracket to change the dozer back to the straight position. Remove the anchor bolt that holds the angle bracket to the "C" frame. Move the moldboard forward and fold the angle bracket toward the center of the dozer. Move the moldboard back to the "C" frame and replace the anchor bolt.

### IV. Dozer Blade End Plates: (Fig. 1 No. 7)

The two end plates can be removed from the dozer blade or left on the dozer blade. Leaving the plates on will help hold dirt when pushing. Removing the plates will aid in dirt flow when using the dozer in the tilt or angle position.

### V. Transport Bar: (Fig. 1 No. 30)

A transport bar is provided with the AMCO Model Number 800 Farm Tractor Dozer. This bar should be kept in some convenient location when not in use.

Raise the dozer blade as high as possible. Place a support under the dozer blade and remove the hydraulic cylinder. Remove one of the two center pins from the transport bar. Adjust the bar to the proper length and attach to the hydraulic cylinder mounting holes. Replace the pin in the center of the bar. Remove the support from the dozer blade. The transport bar will hold the dozer blade in a raised position for transport.

The transport bar can be removed by placing a support under the dozer blade and removing the bar.

## INSTRUCTIONS FOR MAINTENANCE OF THE AMCO MODEL 800 FARM TRACTOR DOZER

Regardless of how well a piece of machinery is built, it needs occasional maintenance to keep it operating at peak efficiency. The AMCO Farm Tractor Dozer is no exception. A few minutes spent in maintenance will add to the life of the dozer. We recommend good operator practices in addition to the following periodic maintenance.

- I. Grease the two bearing caps (Fig. 1 No. 14) with a good grade of pressure gun or chassis grease before using the dozer. The bearings should then be greased every day or after every 10 hours of operation.
- II. Check all bolts and make sure they are tight before using the dozer. After the first 10 hours of operation, the bolts should be rechecked for tightness. After the first 10 hours of operation, the bolts should be checked at least every 50 hours of operation.

- III. The AMCO Model 800 Farm Tractor Dozer is equipped with a High Carbon Steel cutting edge. Should this edge become worn the blade can be reversed by removing the bolts and turning the cutting edge over.

Remember, the 800 dozer is a farm tractor dozer mounted on a farm tractor. The tractor and dozer were not designed for pushing heavy brush or for clearing land.

Abusing the dozer could cause serious damage to the dozer and tractor. AMCO will not be responsible for any damage to the tractor under any circumstances. Also, AMCO will not guarantee any part of any dozer that has been abused.

### BRUSH RACK

#### **Brush Rack (Fig. 1 B)**

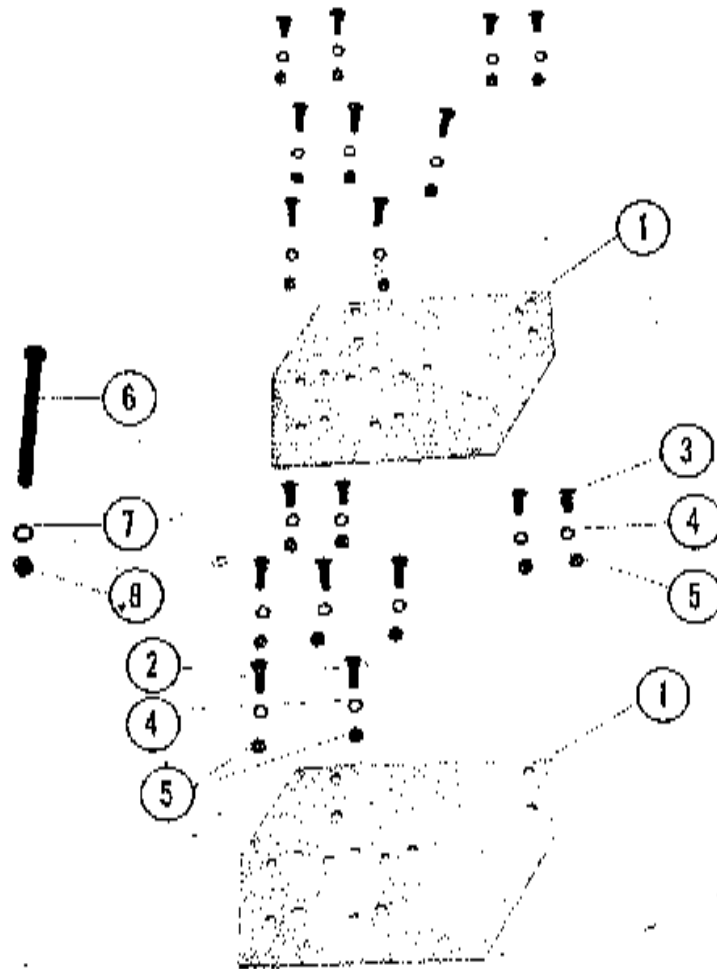
The brush rack (Fig. 1 B) was designed to mount on your AMCO Farm Tractor Dozer's moldboard. This rack was designed to protect your tractor and operator from brush and trash. This rack will also aid in piling brush or trash.

**CAUTION:** The AMCO Brush Rack was designed to protect your tractor and operator,

#### **Brush Rack Attaching Instructions:**

The brush rack was designed to mount on your AMCO Farm Tractor Dozer's moldboard. Remove the end plates from the dozer moldboard and use the end plate bolts to mount the brush rack to the moldboard.





MODEL IH 10 - ADAPTING KIT - IHC 706, 806

(Fig. 2)

Ref. No.	Part No.	Description	No. Req'd
1	6789	Front Mount Plate	2
2	10665	Carriage Bolt 5/8 x 2 USS (Plated)	2
3	10664	Carriage Bolt 5/8 x 1 1/2 USS (Plated)	16
4	11002	Lock Washer 5/8 (Plated)	18
5	10668	Hex Nut 5/8 USS (Plated)	18
6	1594	Machine Bolt	1
7	10391	Lock Washer 7/8 (Plated)	1
8	10436	Hex Nut 7/8 USS (Plated)	1

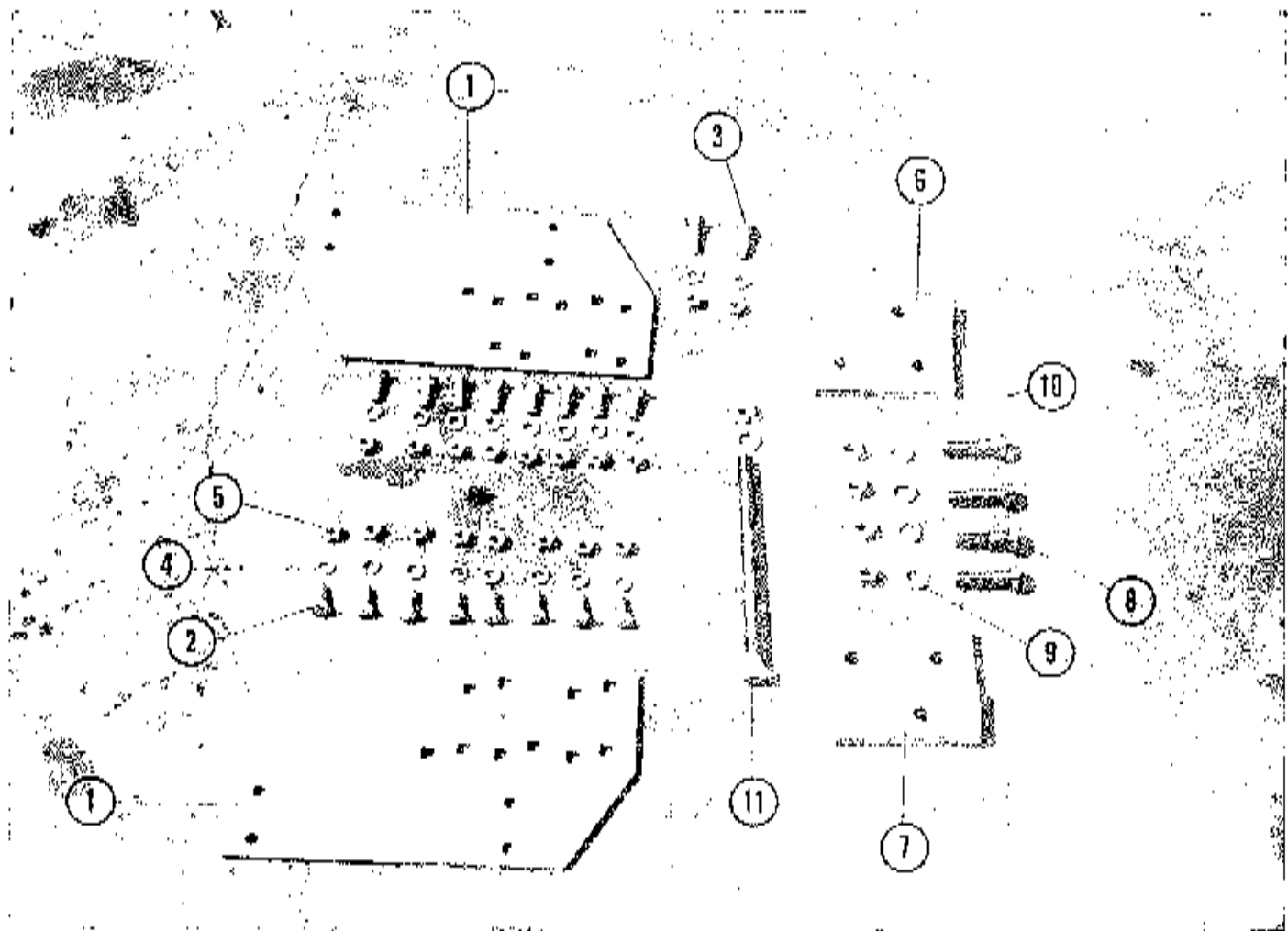
#### INSTRUCTIONS FOR ATTACHING AMCO FARM TRACTOR DOZER MOUNTING KIT NO. IH-10 TO FARMALL 706 AND 806 TRACTORS

##### I. Attaching Front Mount Plates: (Fig. 2 No. 1)

The front mount plates mount on each side of the tractor near the rear of the engine. The two plates are designed to mount with the four round holes on top and toward the front of the tractor.

The plates must be mounted in the rear set of holes on the Farmall 806 Tractor's side frame and in the front set of holes on the Farmall 706 Tractor's side frame. Leave all bolts loose until the entire dozer has been mounted on the tractor, then tighten all bolts securely.

The side plates are interchangeable on Farmall 706 and 806 tractors. When mounting the dozer, use the upper forward set of square holes for the Farmall 806 tractor and the lower rearward set for the Farmall 706 tractor. A rear mount bracket is not required for kit No. IH-10.



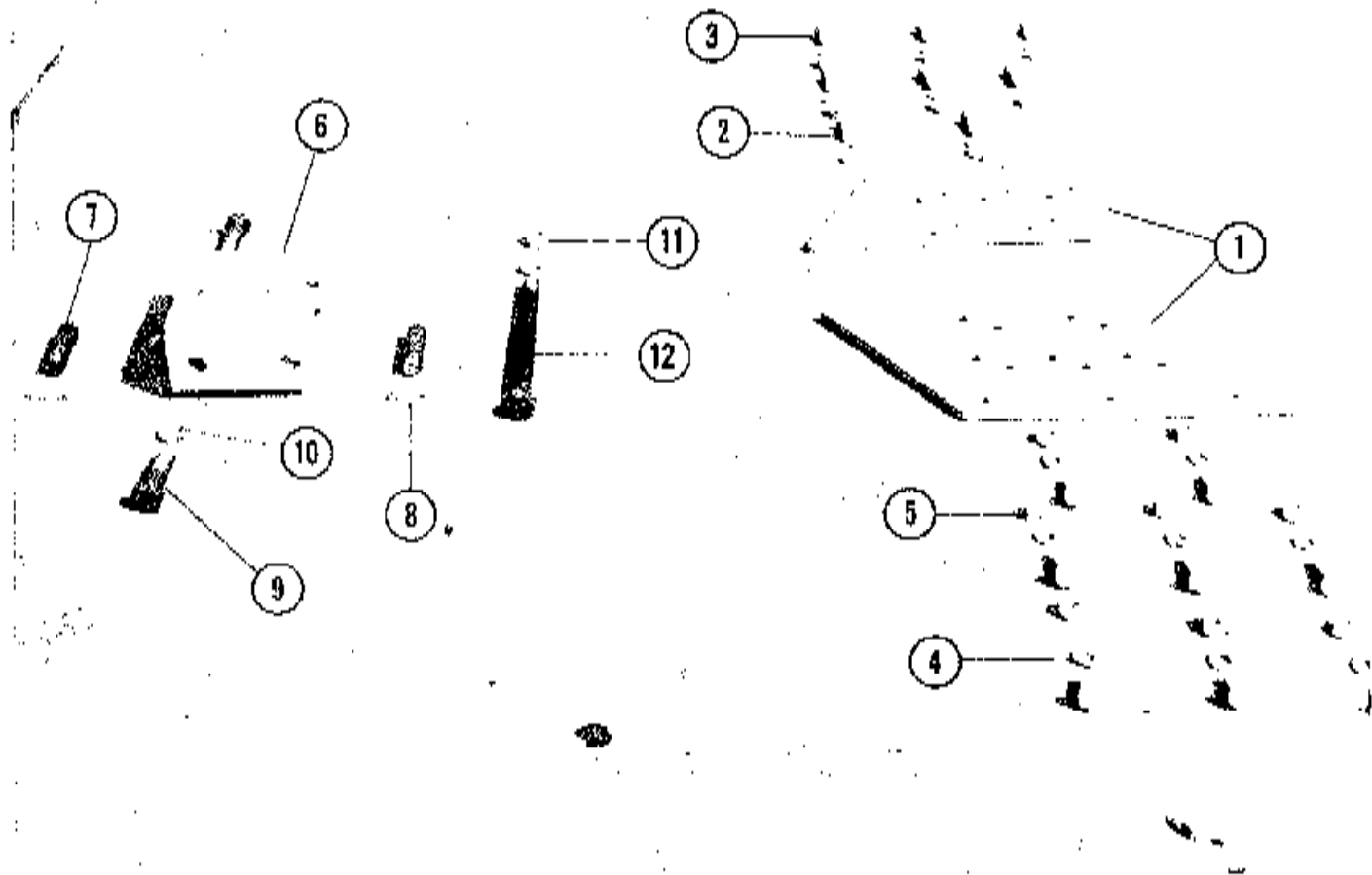
(Fig. 3)

**MODEL IH 11 - ADAPTING KIT - INTERNATIONAL HARVESTER 656**

Rel. No.	Part No.	Description	No. Req'd
1	6789	Front Mount Plate	2
2	10664	Carriage Bolt 5/8 x 1 1/2 USS (Plated)	16
3	10665	Carriage Bolt 5/8 x 2 USS (Plated)	2
4	11002	Lock Washer 5/8 (Plated)	18
5	10668	Hex Nut 5/8 USS (Plated)	18
6	1620	Rear Mount Bracket (Right Hand)	1
7	1621	Rear Mount Bracket (Left Hand)	1
8	10189	Machine Bolt 7/8 x 3 USS	4
9	10035	Lock Washer 7/8	4
10	10148	Hex Nut 7/8" USS	4
11	1622	Machine Bolt 7/8" Dia. (Fab.)	1

**INSTRUCTIONS FOR ATTACHING FARM TRACTOR DOZER MOUNTING KIT NO. IH 11 TO FARMALL 656 TRACTORS**

1. **Attaching Rear Mount Bracket:** (Fig. 3 No. 6 & 7)  
The rear mount bracket mounts inside the under carriage near the rear of the tractor. The Long 7/8" Diameter bolt (Fig. 3 No. 11) goes through the top hole in the bracket and the short bolts (Fig. 3 No. 8) connect the bracket to the rear of the Under Carriage. The Rear Mount bracket has a right hand and left hand. Tighten all bolts securely.
11. **Attaching Front Mount Plates:** (Fig. 3 No. 1)  
The front mount plates mount on each side of the tractor near the rear of the Engine. Align the holes on the plate with the holes on the tractor frame. The two plates are designed to mount with the four round holes on top. Let all bolts stay loose until the under Carriage (Fig. 1 No. 34) has been attached to the front mount plates and then tighten all bolts securely.



MODEL JD 20 - ADAPTING KIT - John Deere 3010, 3020, 4010, 4020

(FIG. 4)

Ref. No.	Part No.	Description	No. Req'd
1	6805	Front Mount Plate	2
2	10665	Carriage Bolt 5/8 x 2 USS (Plated)	10
3	10664	Carriage Bolt 5/8 x 1 1/2 USS (Plated)	6
4	11002	Lock Washer 5/8 (Plated)	16
5	10668	Hex Nut 5/8 USS (Plated)	16
6	1603	Rear Mount Bracket	1
7	6806	Mounting Pin	2
8	10087	Cotter Pin 1/4 x 2	2
9	10475	Machine Bolt 7/8 x 3 1/2 USS	2
10	10391	Lock Washer 7/8 (Plated)	1
11	10436	Hex Nut 7/8 USS (Plated)	1
12	1594	Machine Bolt	1

**INSTRUCTIONS FOR ATTACHING AMCO FARM TRACTOR DOZER MOUNTING KIT NO. JD-20 TO JOHN DEERE 3010, 3020, 4010, AND 4020 TRACTORS**

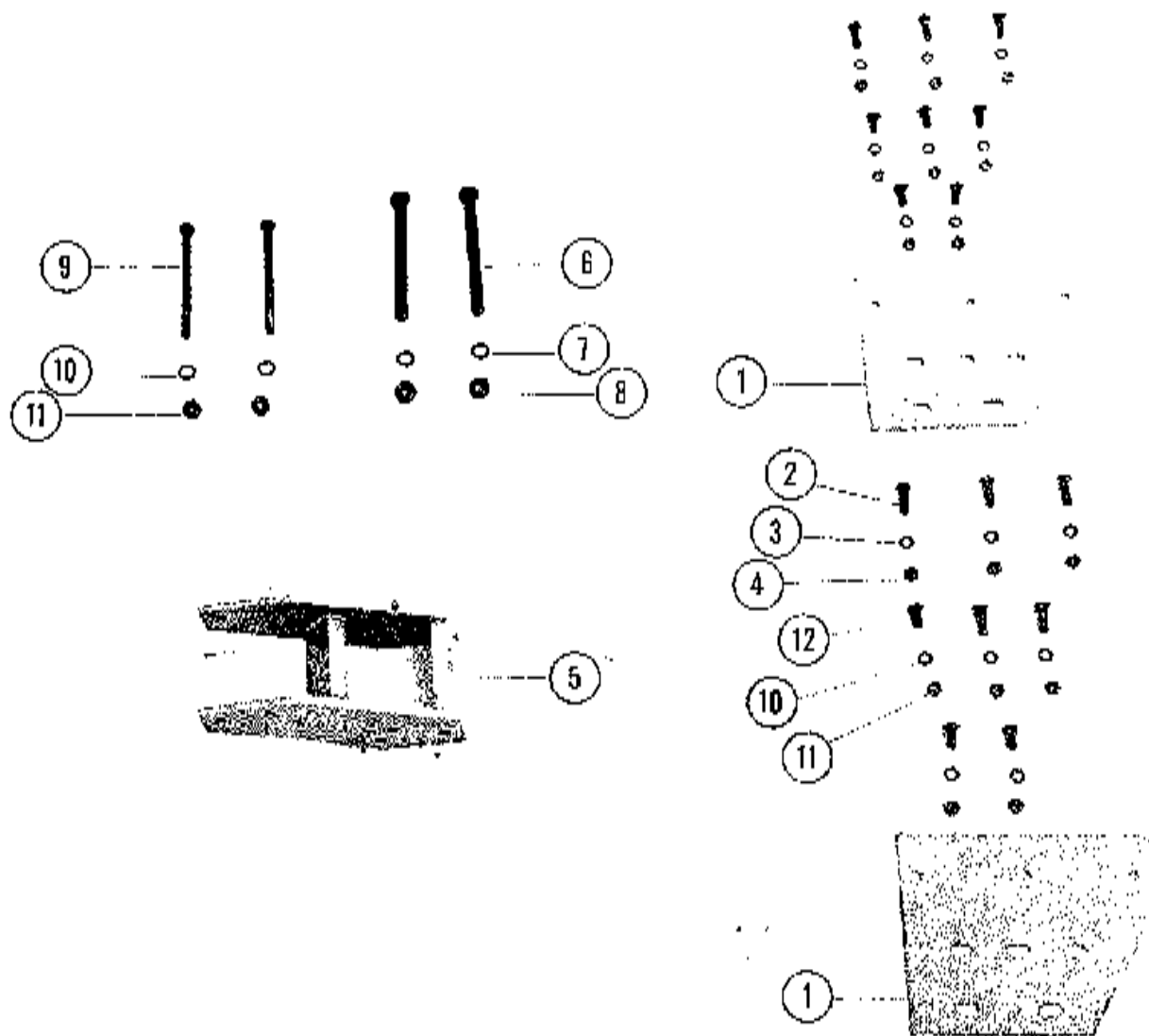
**I. Attaching Rear Mount Bracket: (Fig. 4 No. 6)**

The rear mount bracket is designed to mount on the front end of the tractor's swinging drawbar. Remove the pull pin that holds the swinging

drawbar in place, and slide the drawbar as far forward as possible. After sliding the drawbar forward, replace the pull pin and fasten the drawbar at the rear of the tractor to keep it from swinging. Slide the rear mount bracket onto the front of the drawbar. The smooth side of the bracket should be on top and the straight side should be toward the rear of the tractor. Insert the two 1" diameter Dowel pins through the rear mount bracket and tractor drawbar. Secure the Dowel pins with two cotter pins furnished with the mounting kit.

**II. Attaching Front Mount Plates: (Fig. 4 No. 1)**

The two front mount plates mount on each side of the tractor near the motor. The two plates are designed to mount with the three round holes on top and the plate inclined forward. The plate should be mounted using the three center square holes on the 4010, and 4020 side frame and the second, fourth and fifth square holes from the front on the 3010, and 3020 side frame. Leave the 5/8" diameter bolts loose until the entire dozer is mounted on the tractor, then tighten all bolts securely.



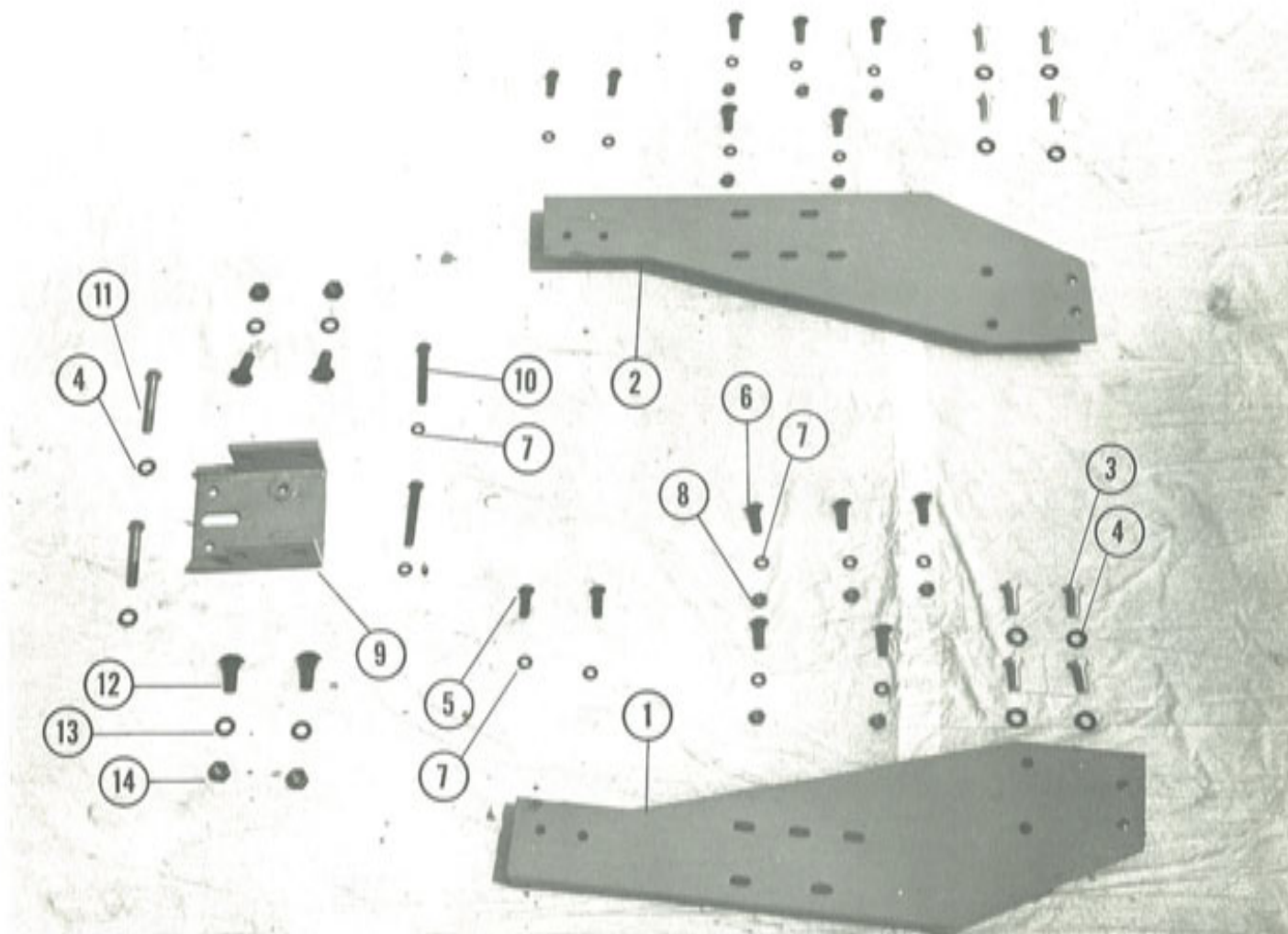
MODEL AC-30 - ADAPTING KIT - Allis Chalmers 190, XT190

(Fig. 5)

Ref. No.	Part No.	Description	No. Req'd
1	6797	Front Mount Plate	2
2	10663	Machine Bolt 5/8 x 2 USS (Plated)	6
3	11002	Lock Washer 5/8 (Plated)	16
4	10668	Hex Nut 5/8 USS (Plated)	16
5	1601	Rear Mount Bracket	1
6	1594	Machine Bolt	2
7	10391	Lock Washer 7/8 (Plated)	2
8	10436	Hex Nut 7/8 USS (Plated)	2
9	1602	Machine Bolt	2
10	10061	Lock Washer 3/4 (Plated)	2
11	10669	Hex Nut 3/4 USS (Plated)	2
12	10664	Carriage Bolt 5/8 x 1 1/2 USS (Plated)	10

**INSTRUCTIONS FOR ATTACHING AMCO FARM TRACTOR DOZER MOUNTING KIT NO. AC-30 TO ALLIS CHALMERS 190 AND XT190 TRACTORS**

- I. **Attaching Rear Mount Bracket:** (Fig. 5--No. 5)  
The rear mount bracket is designed to mount over the front drawbar mount bracket located under and slightly forward of the rear tractor axle. To mount the bracket, remove the two bolts presently on the tractor and slip the rear end of the bracket over the front drawbar mount. After aligning the bracket's holes with the drawbar mount holes, insert the two 3/4" diameter bolts furnished with the mounting kit (Fig. 5 No. 6). Leave bolts loose until the entire dozer has been mounted on the tractor, then tighten all bolts securely.
- II. **Attaching Front Mount Plates:** (Fig. 5--No. 1)  
The two front mount plates mount on each side of the tractor near the motor. The two plates are designed to mount with the three round holes on top and the straight end to the rear. Mount each plate using the three holes near the rear of the tractor's side frame. Leave the 5/8" diameter bolts (Fig. 5--Nos. 2 & 12) loose until the entire dozer is mounted on the tractor and then tighten all bolts securely.



MODEL JC-40 - ADAPTING KIT - J. I. Case 730, 830

(FIG. 6)

Ref. No.	Part No.	Description	No. Req'd
1	1595	Front Mount Plate-Right Hand	1
2	1596	Front Mount Plate-Left Hand	1
3	10670	Cap Screw 3/4 x 2 USS (Plated)	8
4	10061	Lock Washer 3/4 (Plated)	10
5	10663	Cap Screw 5/8 x 2 USS (Plated)	4
6	10665	Carriage Bolt 5/8 x 2 USS (Plated)	10
7	11002	Lock Washer 5/8 (Plated)	16
8	10668	Hex Nut 5/8 USS (Plated)	10
9	1597	Rear Mount Bracket	1
10	10666	Machine Bolt 5/8 x 5 USS (Plated)	2
11	10671	Machine Bolt 3/4 x 5 USS (Plated)	2
12	10595	Carriage Bolt 7/8 x 2 1/2 USS (Plated)	4
13	10391	Lock Washer 7/8 (Plated)	4
14	10436	Hex Nut 7/8 USS (Plated)	4

**INSTRUCTIONS FOR ATTACHING AMCO FARM TRACTOR DOZER MOUNTING KIT NO. JC-40 TO J. I. CASE 730, 830 ROW CROP TRACTORS**

**I. Attaching Rear Mount Bracket:**

The rear mount bracket (Fig. 6-No. 9) mounts inside the mounting yokes on the rear of the carriage frame (Fig. 1-No. 34). The flat side of the rear mount bracket is turned down and the slot in the center goes to the rear. The bracket is secured to the carriage frame with four 7/8" diameter carriage bolts (Fig. 6-No. 12, 13 & 14). Insert the carriage

bolts from the inside and tighten hand tight. Wait until after the entire dozer has been mounted on the tractor before tightening all bolts securely.

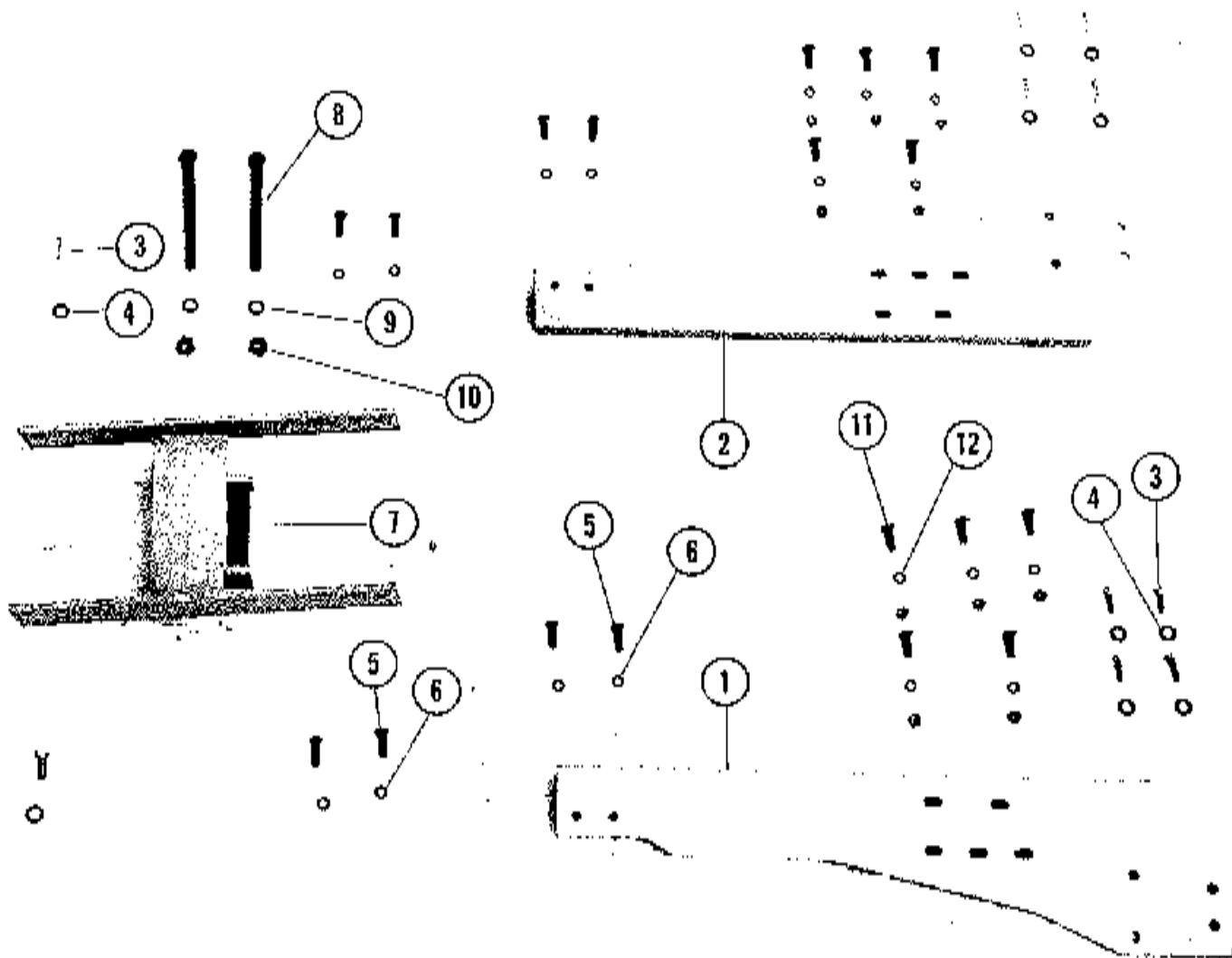
**II. Attaching Front Mount Plates:**

The front mount plates (Fig. 6-Nos. 1 & 2) mount on each side of the tractor's engine. The hydraulic hose protector cover near the flywheel should be removed. Bolt the two plates onto the tractor with the ribs turned inside. Leave the bolts loose until the entire dozer has been mounted on the tractor, then tighten all bolts securely.

**III. Attaching Rear Mount Bracket:**

The rear mount bracket (Fig. 6-No. 9) mounts under the front of the drawbar mount. Remove the two 5/8" diameter and the two 3/4" diameter bolts that hold the drawbar in place. Lift the rear of the carriage frame and align the holes in the bottom of the rear mount bracket with those on the tractor. Insert the two 5/8" diameter and the two 3/4" diameter bolts supplied with the mounting kit. Tighten these bolts thoroughly.

Insert four 5/8" diameter carriage bolts (Fig. 6-No. 6) through the left front mount plate and the carriage frame mounting plate and tighten these bolts hand tight. Repeat this procedure on the right side but be sure and mount the adjusting leg anchor (Fig. 1-No. 19 & 20) on the two bolts near the upper rear portion of the right front mount plate. The entire dozer is now mounted on the tractor so be sure and tighten all bolts securely.



MODEL JC 50 - ADAPTING KIT - J. I. Case 930

(FIG. 7)

Ref. No.	Part No.	Description	No. Req'd
1	1591	Front Mount Plate - Right Hand	1
2	1592	Front Mount Plate - Left Hand	1
3	10670	Cap Screw 3/4 x 2 USS (Plated)	10
4	10061	Lock Washer 3/4 (Plated)	10
5	10663	Cap Screw 5/8 x 2 USS (Plated)	8
6	11002	Lock Washer 5/8 (Plated)	18
7	1593	Rear Mount Bracket	1
8	1594	Machine Bolt	2
9	10391	Lock Washer 7/8 (Plated)	2
10	10436	Hex Nut 7/8 USS (Plated)	2
11	10665	Carriage Bolt 5/8 x 2 USS (Plated)	10
12	10668	Hex Nut 5/8 USS (Plated)	10

**INSTRUCTIONS FOR MOUNTING AMCO FARM TRACTOR DOZER MOUNTING KIT NO. JC-50 TO CASE 930 ROW CROP TRACTORS**

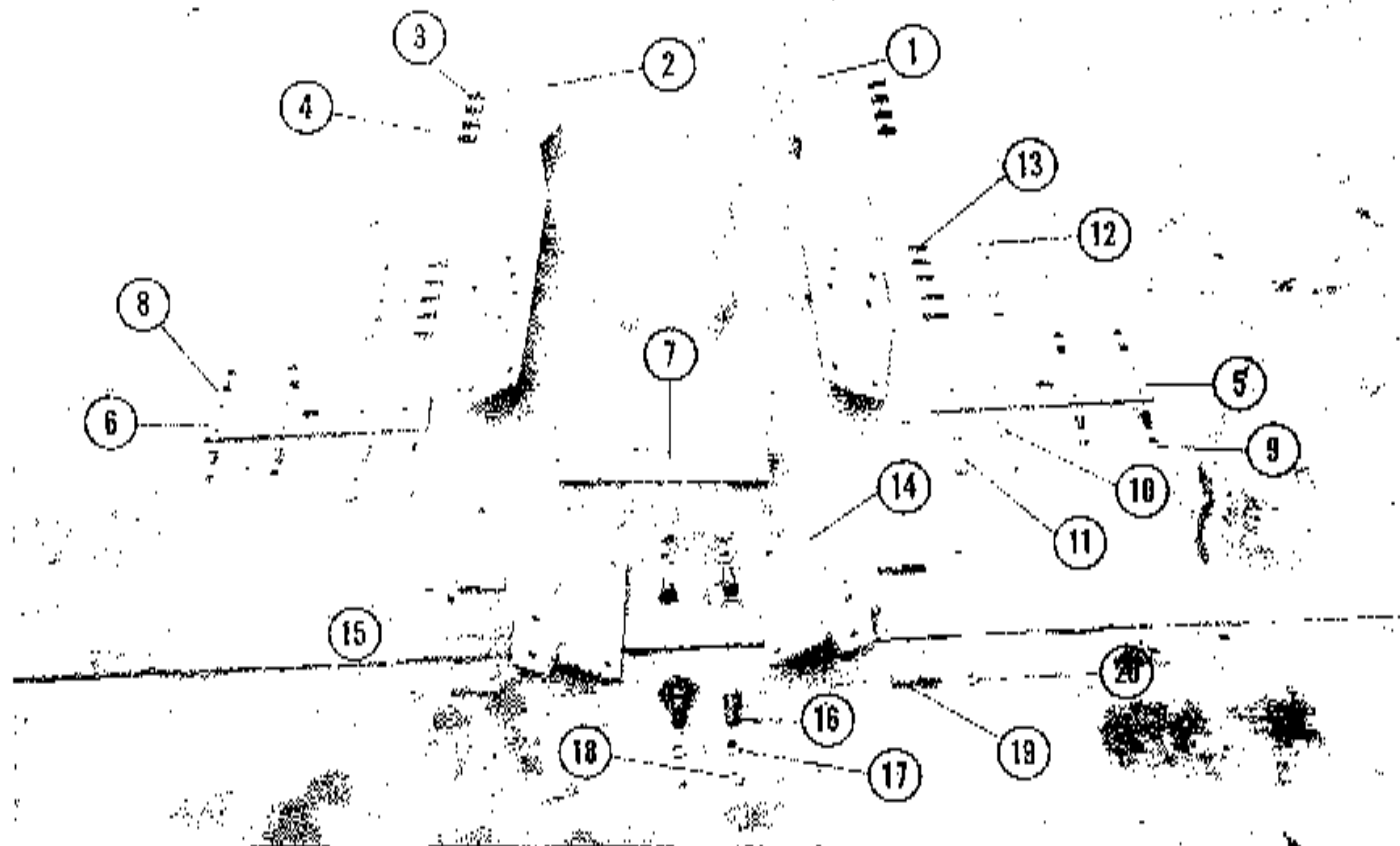
**I. Attaching Rear Mount Bracket: (Fig. 7-No. 7)**

The rear mount bracket attaches under and slightly to the rear of the tractor's transmission. Lay the

bracket under the tractor with the two side bars facing forward and upward. Lift the front of the bracket and mount the bracket on the side of the transmission housing with one 5/8" diameter bolt (Fig. 7 No. 8). Mount the front of the bracket on the opposite side of the tractor with another 5/8" diameter bolt. Leave both bolts hand tight. Swing the rear of the bracket up and mount with two 3/4" diameter bolts. Complete the mounting of the bracket by putting two 5/8" diameter bolts in front of the bracket. Leave the bolts loose until dozer has been mounted, then tighten all bolts securely.

**II. Attaching Front Mount Plates: (Fig. 7 No. 1 & 2)**

The two front mount plates mount on each side of the engine. The steps on each side of the operator's platform must be removed. Bolt the plates onto the side of the tractor with the ribs turned inside. Leave the bolts loose until the entire dozer has been mounted on the tractor, then tighten all bolts securely.



MODEL JC 51 - ADAPTING KIT - J. I. CASE 930 STANDARD

(FIG. 8)

Ref. No.	Part No.	Description	No. Req'd
1	1656	Front Mount Plate RH	1
2	1657	Front Mount Plate LH	1
3	10679	Machine Bolt 3/4 x 1 1/8 USS (Plated)	8
4	10061	Lock Washer 3/4 (Plated)	8
5	6961	End Plate RH	1
6	6962	End Plate LH	1
7	1658	Center Mount Bracket	1
8	10018	Machine Bolt 1/2 x 1 1/4 USS	8
9	10098	Lock Washer 1/2	8
10	10663	Machine Bolt 5/8 x 2 USS (Plated)	4
11	11002	Lock Washer 5/8 (Plated)	14
12	10668	Hex Nut 5/8 USS (Plated HVY.)	14
13	10665	Carringe Bolt 5/8 x 2 USS (Plated)	10
14	1659	Rear Mount Bracket RH	1
15	1660	Rear Mount Bracket LH	1
16	10049	Machine Bolt 7/8 x 2 1/2 USS	4
17	10035	Lock Washer 7/8	4
18	10147	Hex Nut 7/8 USS	4
19	10047	Machine Bolt 3/4 x 3 1/2 USS	4
20	10002	Lock Washer 3/4	4

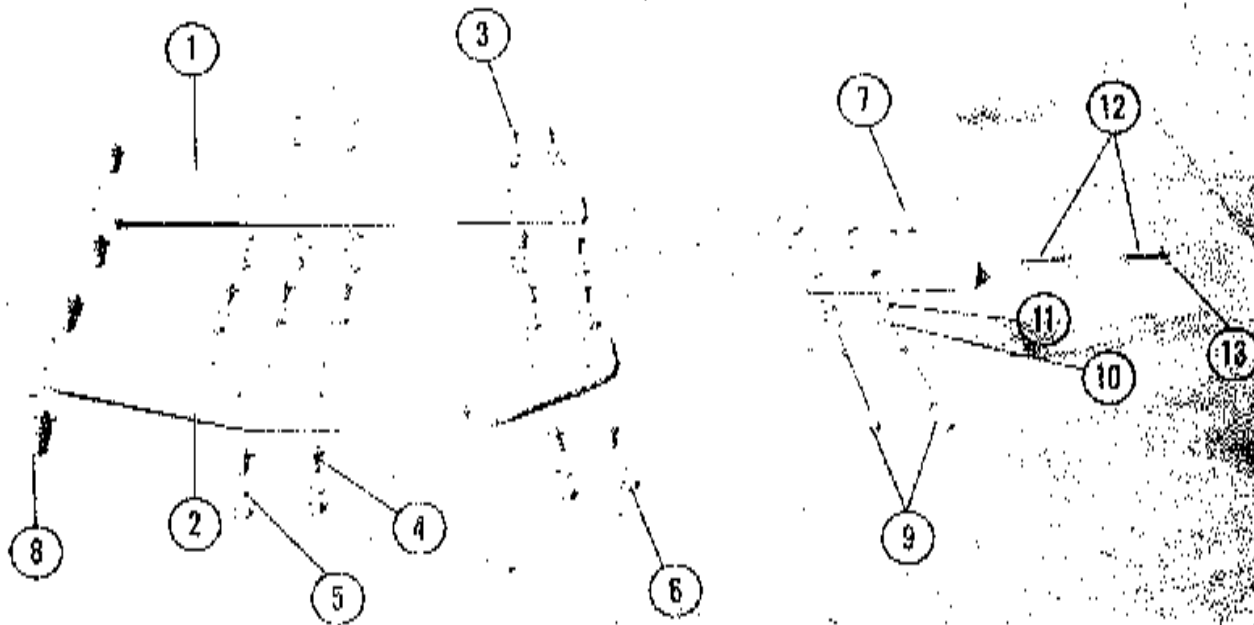
**INSTRUCTIONS FOR MOUNTING AMCO FARM TRACTOR DOZER MOUNTING KIT NO. JC 51 TO CASE 930 STANDARD TRACTORS**

- I. **Attaching Front Mount Plates RH:** (Fig. 8 No. 1)  
The right hand plate bolts to the tractor frame at the front of the motor with the (4) 3/4 x 1 1/8 machine bolts.
- II. **Attaching Front Mount Plate LH:** (Fig. 8 No. 2)  
See above. **Note:** The bracket on this plate is

for attaching shaft of the power steering cylinder if tractor is equipped with power steering.

- III. **Attaching Rear Mount Plate RH:** (Fig. 8 No. 5)  
Remove the clutch inspection plate from tractor side. Place this plate in the same holes and fasten with the (4) 1/2 x 1 1/4 Machine bolts
- IV. **Attaching Rear Mount Plate LH:** (Fig. 8 No. 6)  
Remove the clutch inspection plate and the clutch arm and place the rear mount plate to the tractor and fasten with the (4) 1/2 x 1 1/4 Machine bolt. These rear mount plates fasten to the rear set of holes in the front mount plate.
- V. **Attaching Center Mount Bracket:** (Fig. 8 No. 7)  
Place this bracket under tractor at rear of motor. Fasten it to the rear mount plate and the front mount plate with the 5/8 x 2 Machine bolts. The under carriage (Fig. 1 No. 34) mounts to the slotted holes in the front mount plates.
- VI. **Attaching Rear Mount Brackets Right Hand and Left Hand:** (Fig. 8 No. 14 & 15)  
First, remove draw bar from tractor, remove the 3/4 x 3 machine bolts from housing under tractor. Mount these brackets at rear of under carriage, with (4) 7/8 x 2 1/2 Machine bolts. Make sure the long end of this bracket is pointing to front of tractor. Raise the rear mount bracket until the holes align with the holes in the tractor housing. Fasten with the 3/4 x 3 1/2 Machine bolts furnished with the kit.

Replace the draw bar by sliding it back through the slot cut in the under carriage.  
Make sure all bolts are securely fastened.



MODEL HF 60 - ADAPTING KIT - FORD 6000

(FIG. 9)

Ref. No.	Part No.	Description	No. Req'd
1	1615	Front Mount Plate - Right Hand	1
2	1616	Front Mount Plate - Left Hand	1
3	10674	Machine Bolt 5/8 x 2 1/2 USS (Plated)	8
4	10665	Carriage Bolt 5/8 x 2 USS (Plated)	10
5	11002	Lock Washer 5/8 (Plated)	18
6	10668	Hex Nut 5/8 USS (Plated)	18
7	1617	Rear Mount Bracket	1
8	10675	Machine Bolt 5/8 x 3 1/2 USS (Plated)	4
9	1594	Machine Bolt	2
10	10391	Lock Washer 7/8 (Plated)	2
11	10436	Hex Nut 7/8 USS (Plated)	2
12	6840	Pin Retainer	2
13	10075	Cotter Pin 1/4 x 1 1/2	4

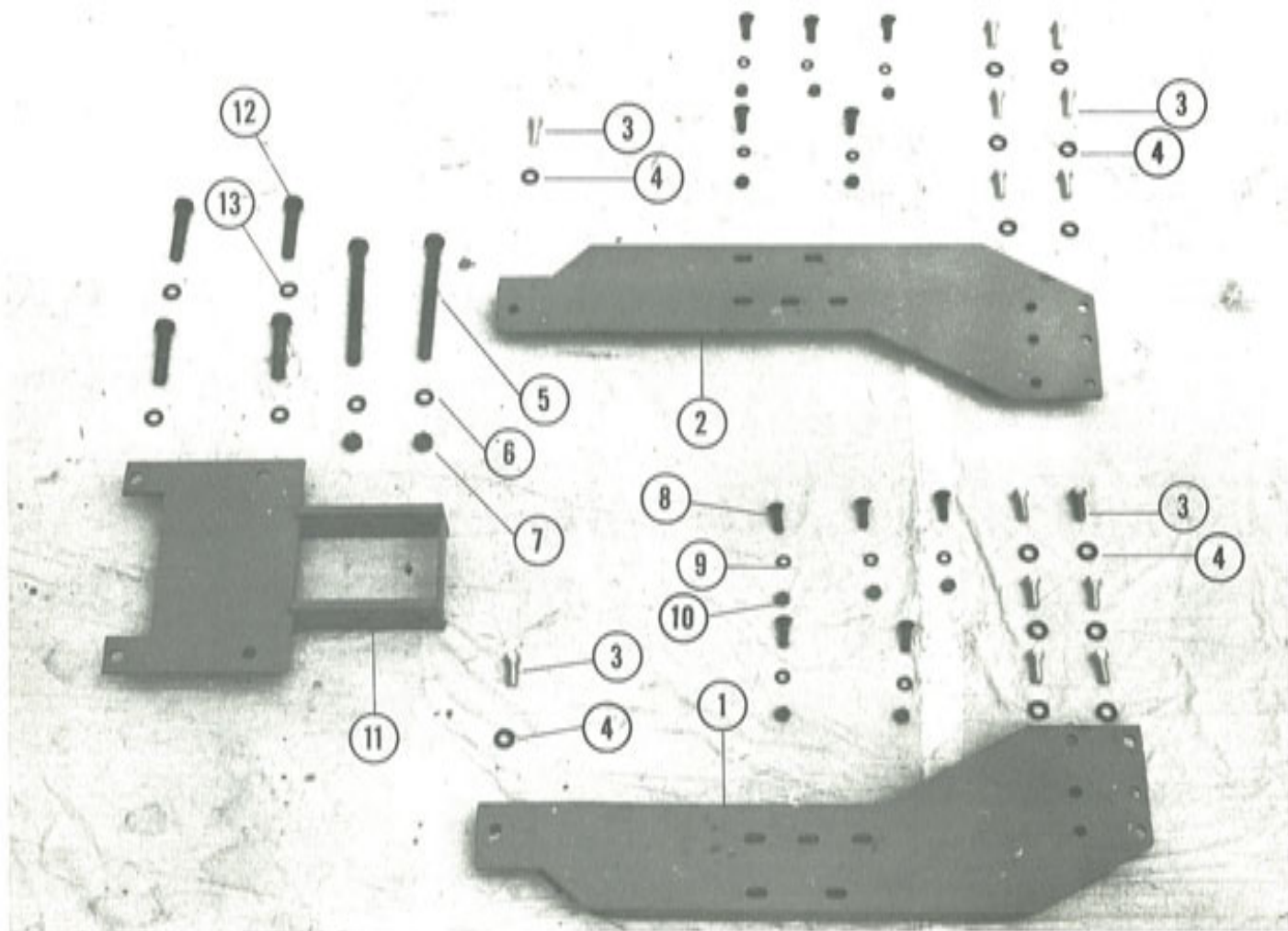
### INSTRUCTIONS FOR MOUNTING AMCO FARM TRACTOR DOZER KIT NO. HF 60 TO FORD 6000 TRACTOR

1. **Attaching Rear Mount Bracket:** (Fig. 9 No. 7)  
The Rear Mount bracket is designed to mount on the front end of the tractor's swinging drawbar.

Remove the pull pin that holds the swinging drawbar in place, and slide the drawbar as far forward as possible. After sliding the drawbar forward, replace the pull pin and fasten the drawbar at the rear of the tractor to keep it from swinging. Slide the rear mount bracket onto the front of the drawbar. The straight side should be toward the rear of the tractor. Insert the connecting pins (Fig. 9 No. 12) through the front holes in the bracket and the tractor's drawbar. Secure the connecting pins with cotter pins. (Fig. 9 No. 13)

11. **Attaching Front Mount Plates:** (Fig. 9 No. 1, 2)  
The Front Mount Plates, right hand and left hand, bolt to each side of the tractor's frame. Bolt the plates to the Under Carriage (Fig. 1 No. 34) then raise the carriage to meet the frame plate on the tractor. These plates will then align up with the holes in the tractor frame plate. First, remove the two studs in the front of the tractor frame plate and bolt the front mount plates to the frame with the two bolts furnished with your HF 60 Kit. Be sure all bolts are fastened securely.





MODEL MF 70 - ADAPTING KIT - Massey Ferguson 1100, 1130

(FIG. 10)

Ref. No.	Part No.	Description	No. Req'd
1	1598	Front Mount Plate-Right Hand	1
2	1599	Front Mount Plate-Left Hand	1
3	10670	Cap Screw 3/4 x 2 USS (Plated)	14
4	10061	Lock Washer 3/4 (Plated)	14
5	1594	Machine Bolt	2
6	10391	Lock Washer 7/8 (Plated)	2
7	10436	Hex Nut 7/8 USS (Plated)	2
8	10665	Carriage Bolt 5/8 x 2 USS (Plated)	10
9	11002	Lock Washer 5/8 (Plated)	10
10	10668	Hex Nut 5/8 USS (Plated)	10
11	1600	Rear Mount Bracket	1
12	10672	Cap Screw 1 x 5 USS	4
13	11027	Lock Washer 1"	4

#### INSTRUCTIONS FOR ATTACHING AMCO FARM TRACTOR DOZER MOUNTING KIT NO. MF-70 TO MASSEY-FERGUSON 1100 AND 1130 TRACTORS

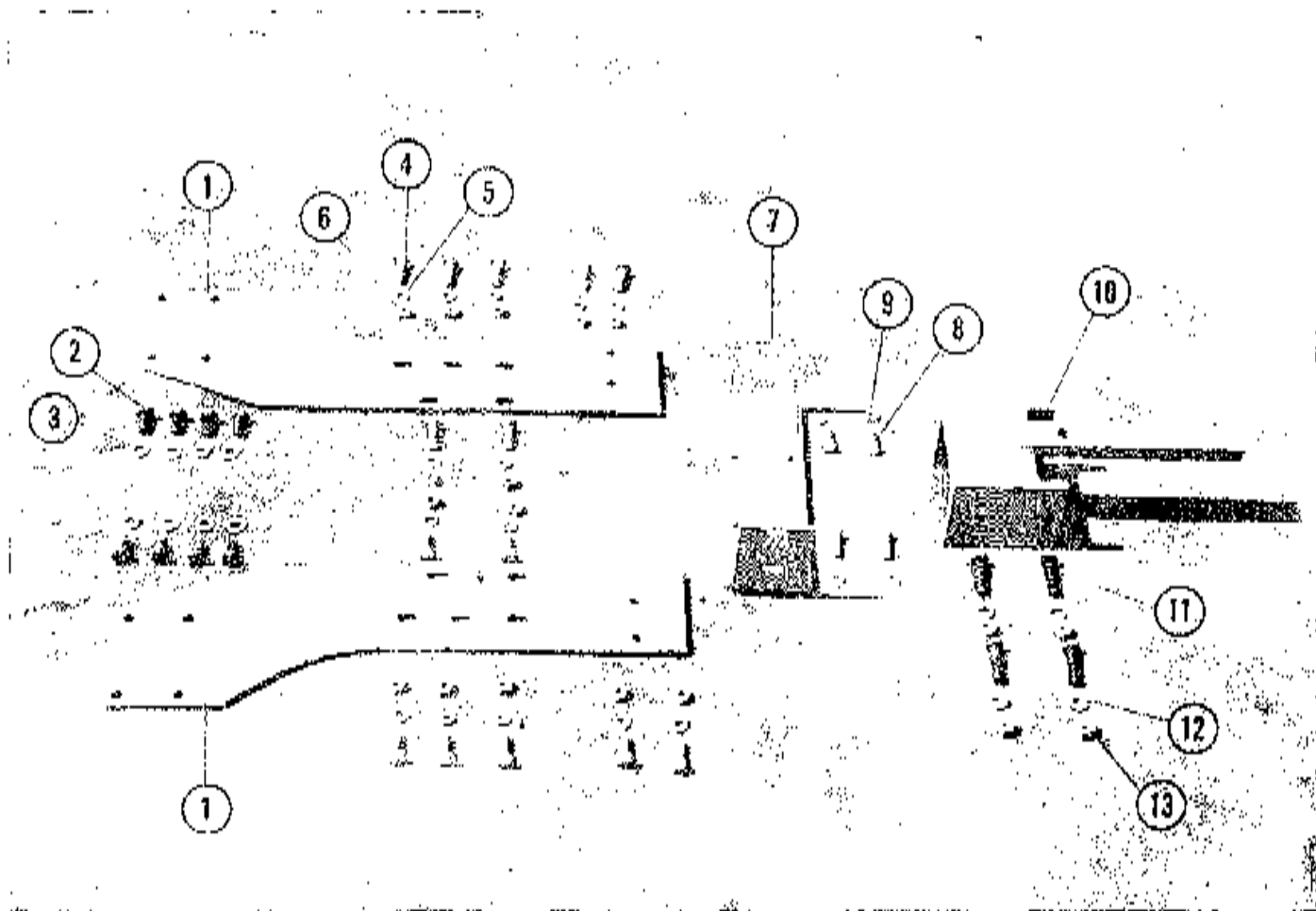
##### I. Attaching Rear Mount Bracket: (Fig. 10 No. 11)

The rear mount bracket is designed to mount under the center of the tractor's rear axle. The swinging draw bar cradle should be turned to the rear and attached to the lower lift arms. The rear mount bracket is designed to mount with the flat side of the plate against the bottom of the tractor and the mounting bars toward the front of the tractor.

Remove the four 1" diameter bolts from the center of the drawbar mounting brackets. These brackets are located under the center of the tractor's rear axle. Lift the rear mount bracket and align the holes in the mount bracket with those on the tractor. Secure the bracket with the four 1" diameter bolts (Fig. 10 No. 12) supplied with the dozer mounting kit. Tighten all four bolts hand tight, but do not tighten completely until after the entire dozer has been mounted on the tractor.

##### II. Attaching Front Mount Plates: (Fig. 10 No. 1 & 2)

The front mount plates mount on each side of the tractor's engine. Bolt the two front mount plates onto the tractor with the ribs turned toward the inside. Leave the bolts loose until the entire dozer has been mounted on the tractor then tighten all bolts securely.



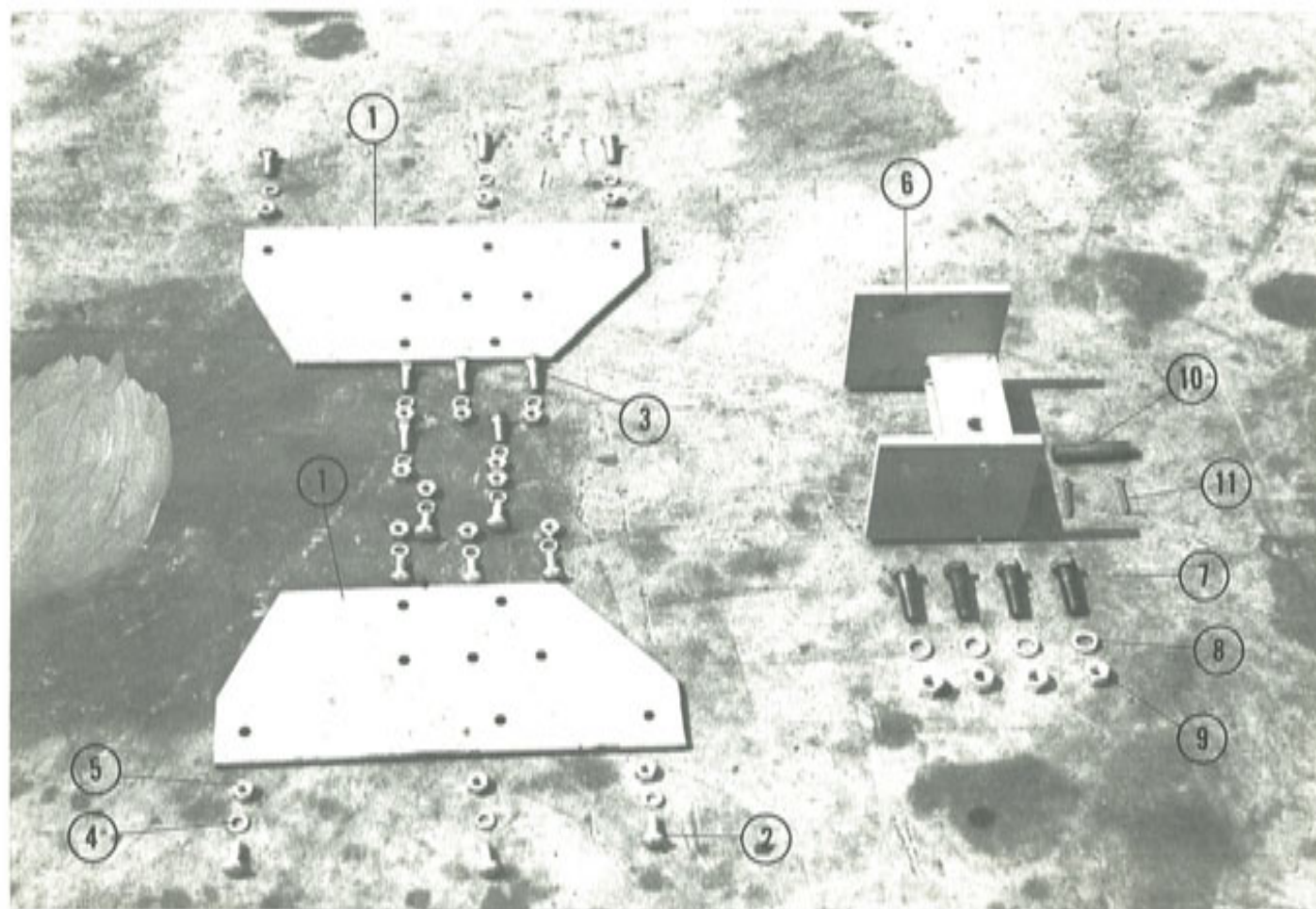
(FIG. 11)

MODEL MF 71 - ADAPTING KIT - MASSEY FERGUSON 90 AND SUPER 90

Ref. No.	Part No.	Description	No. Req'd
1	6933	Front Mount Plate	2
2	10121	Machine Bolt 3/4 x 1 1/2 USS	8
3	10002	Lock Washer 3/4	8
4	10665	Carriage Bolt 5/8 x 2 USS (Plated)	14
5	11002	Lock Washer 5/8 (Plated)	14
6	10668	Hex Nut 5/8 USS (Plated)	14
7	1640	Center Mount Plate	1
8	10663	Cap Screw 5/8 x 2 USS (Plated)	4
9	11002	Lock Washer 5/8 (Plated)	4
10	1641	Rear Mount Bracket	1
11	10677	Cap Screw 3/4 x 3 USS	4
12	10061	Lock Washer 3/4 (Plated)	4
13	10669	Hex Nut 3/4 USS (Plated)	4

INSTRUCTIONS FOR ATTACHING AMCO FARM TRACTOR DOZER MOUNTING KIT NO. MF 71 TO MASSEY FERGUSON 90 AND SUPER 90 TRACTORS

- I. **Attaching Front Mount Plate:** (Fig. 11 No. 1)  
Mount the side plates to each side of the tractor with the 3/4 x 1 1/2 Machine Bolt. Place the mount plate to the correct holes that align with the holes on the tractor. Let all bolts stay loose until the complete blade is attached to the tractor then tighten all bolts securely.
- II. **Attaching Center Mount Bracket:** (Fig. 11 No. 8)  
Take the clutch inspection plate off the bottom of the tractor and mount this bracket in the same holes with the 5/8 x 2 Machine Bolts and to the rear set of holes in the front mount plates.
- III. **Attaching Rear Mount Bracket:** (Fig. 11 No. 11)  
Remove the tractor swinging draw bar completely from tractor and slide the prong of the rear mount bracket to the rear of the tractor and between the two bolts on the tractor lateral hitch. Bolt the rear mount bracket to the rear of the Under Carriage (Fig. 1 No. 34). Tighten all bolts securely.



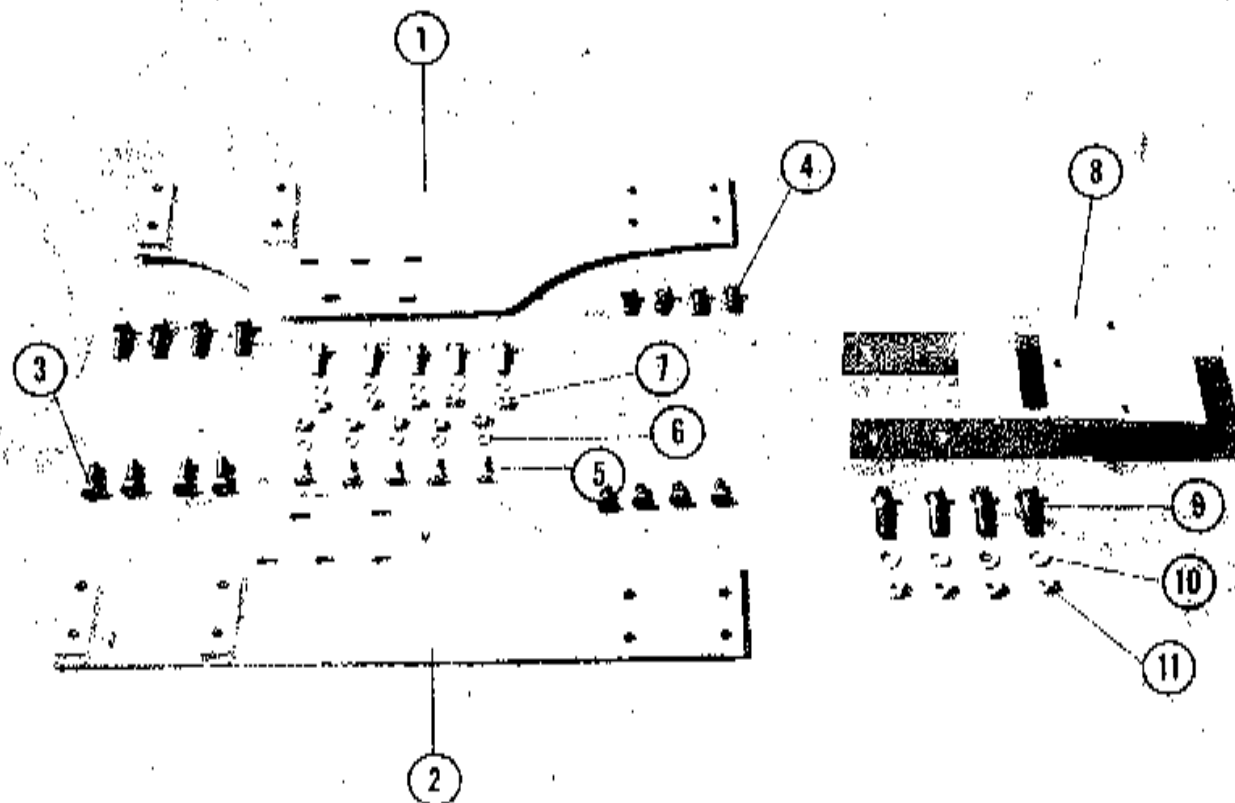
(FIG. 12)

**MODEL MM 80 – ADAPTING KIT – MINNEAPOLIS MOLINE 670 AND 670 SUPER**

Ref. No.	Part No.	Description	No. Req'd
1	6928	Front Mount Plate	2
2	10664	Carriage Bolt 5/8 x 1½" USS (Plated)	14
3	10665	Carriage Bolt 5/8 x 2 USS (Plated)	2
4	11002	Lock Washer 5/8 (Plated)	16
5	10668	Hex Nut 5/8 USS (Plated)	16
6	1639	Rear Mount Bracket	1
7	10189	Machine Bolt 7/8 x 3 USS	4
8	10035	Lock Washer 7/8	4
9	10148	Hex Nut 7/8 USS	4
10	6929	Retainer Pin	1
11	10075	Cotter Pin 1/4 x 1½	2
12	10090	Cut Washer 1 (Not Shown)	2

**INSTRUCTIONS FOR ATTACHING AMCO FARM TRACTOR DOZER MOUNTING KIT NO. MM 90 TO MINNEAPOLIS MOLINE 670 AND 670 SUPER**

- I. **Attaching Rear Mount Bracket:** (Fig. 12 No. 6)  
 The Rear Mount bracket is designed to mount on the front end of the tractor's swinging drawbar. Remove the pull pin that holds the swinging drawbar in place, and slide the drawbar as far forward as possible. After sliding the drawbar forward, replace the pull pin and fasten the drawbar at the rear of the tractor to keep it from swinging. Slide the rear mount bracket onto the front of the drawbar. The straight side should be toward the front of the tractor. Insert the connecting pin (Fig. 12 No. 10) through the hole in the bracket and the tractor's drawbar. Secure the connecting pin with cotter pins. (Fig. 12 No. 11).
- II. **Attaching Front Mount Plate:** (Fig. 12 No. 1)  
 The two front mount plates mount on each side of the tractor near the motor. Align the holes on the plates to match the holes on the tractor. Let all bolts stay loose until the complete Dozer Blade has been mounted to the tractor, then tighten all bolts securely.



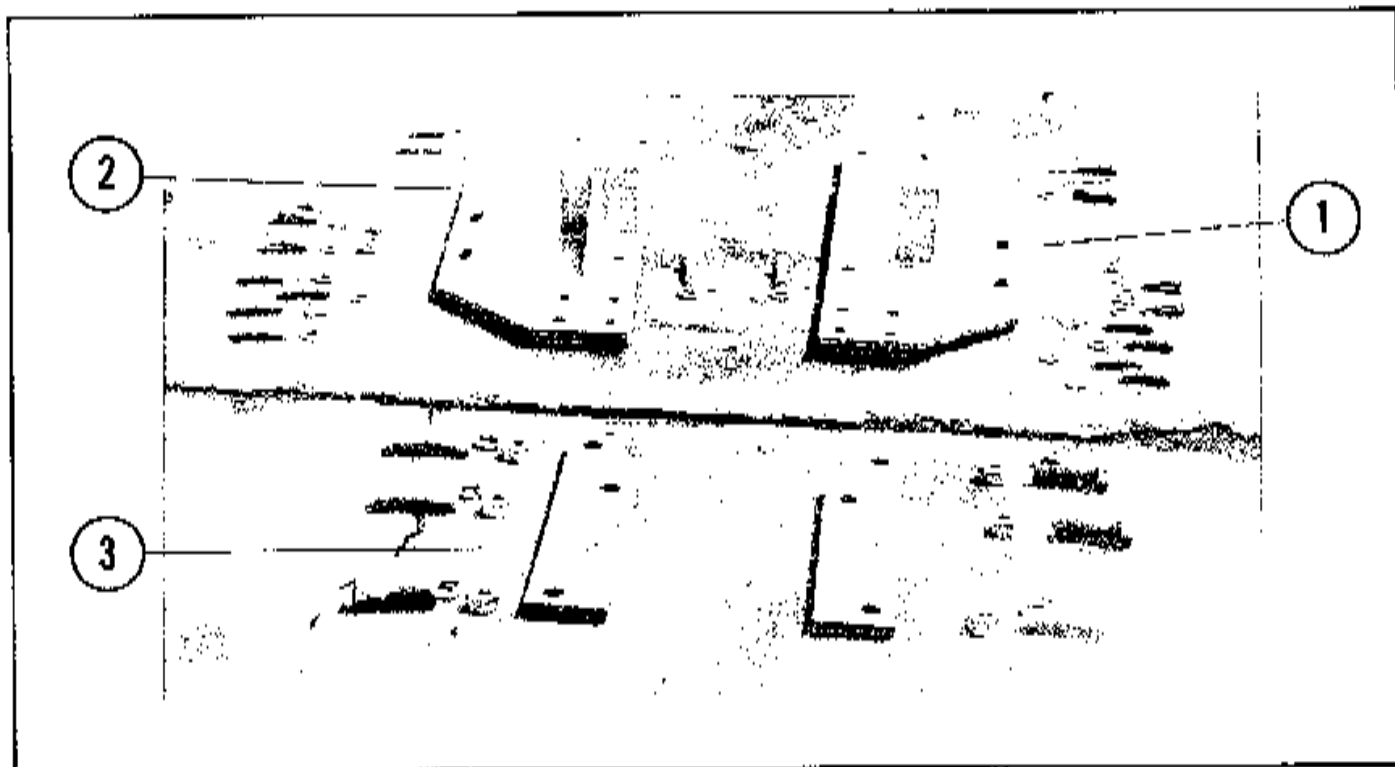
(FIG. 13)

MODEL OC 90 - ADAPTING KIT - OLIVER 1800, 1850 TRACTORS

Ref. No.	Part No.	Description	No. Req'd
1	1644	Front Mount Plate RH	1
2	1645	Front Mount Plate LH	1
3	10678	Cap Screw 3/4 x 2 1/2 USS (Plated)	8
4	10679	Cap Screw 3/4 x 1 1/2 USS (Plated)	8
5	10665	Carriage Bolt 5/8 x 2 USS (Plated)	10
6	11002	Lock Washer 5/8 (Plated)	10
7	10668	Hex Nut 5/8 USS (Plated)	10
8	1646	Rear Mount Bracket	1
9	10189	Machine Bolt 7/8 x 3 USS	4
10	10035	Lock Washer 7/8	4
11	10148	Hex Nut 7/8 USS	4
	10087	Cotter Pin 1/4 x 2	1
	7332	Mounting Pin	1

INSTRUCTIONS FOR ATTACHING AMCO FARM TRACTOR DOZER MOUNTING KIT NO. OC 90 TO OLIVER 1800, AND 1850

- I. **Attaching Front Mount Plate:** (Fig. 13 No. 1 & 2)  
 There are two front mount plates. The spacer blocks have been welded to the inside front of each plate. Use the eight 3/4" x 2 1/2" USS machine bolts to fasten the front of the plate to the tractor. The eight 3/4" x 1 1/2" USS Machine Bolts are used to fasten the rear of the plate to the tractor. Align the holes on the plates to the holes on the tractor frame. Let all bolts stay loose until the entire dozer has been mounted on the tractor, then tighten all bolts securely.
- II. **Attaching Rear Mount Bracket:** (Fig. 13 No. 8)  
 Remove the drawbar and mounting bracket from under the tractor's rear axle. Replace the drawbar mounting bracket with the kit rear mount bracket (Fig. 13 No. 8). Attach the front of the tractor's drawbar to the rear mount bracket with the mounting pin and cotter pin furnished with the kit.



(FIG. 14)

MODEL DB-100 - ADAPTING KIT - DAVID BROWN 1200 TRACTORS

PARTS LIST

Ref. No.	Part No.	Description	No. Req'd
1	1889	Front Mount Plate RH	1
2	1890	Front Mount Plate LH	1
	10665	Carriage Bolt 5/8 x 2 USS (Plated)	4
	11002	Lock Washer 5/8 (Plated)	18
	10668	Hex Nut 5/8 USS (Plated)	4
3	7788	Rear Mount Bracket	2
	10189	Machine Bolt 7/8 x 3 USS	6
	10035	Lock Washer 7/8	6
	10148	Hex Nut 7/8 USS	6
	10663	Machine Bolt 5/8 x 2 NC (Plated)	14

the frame carriage (Fig. 1, No. 31) to the tractor's swinging drawbar support bracket.

II. **Attaching Left Front Mount Plate:** (Fig. 14, No. 2) Remove the step strap from the left stop plate. Remove the power steering cylinder's rear mount bracket from the rear of the cylinder and the tractor. Attach the left front mount plate to the tractor. The seven 5/8 x 2 machine bolts should be used. Attach the rear of the power steering cylinder to the left front mount plate. The 7/16" diameter bolts on the cylinder should be used.

III. **Attaching Right Front Mounting Plate:** (Fig. 14, No. 1) Bolt the right front mount plate to the tractor's side frame using six 5/8 x 2 machine bolts. After mounting the dozer to the tractor, mount the screw jack guide sleeve (Fig. 1, No. 20) to the right front mount plate.

IV. **Pre-Mount Preparations For Dozer:** The AMCO farm tractor dozer's frame carriage is designed to mount outside the front mount plates on most tractors manufactured in the United States. The David Brown tractor's extra wide frame necessitates mounting the frame carriage inside the front mount plates.

The two gussets and guide sleeve mount bracket on the outside of the frame carriage's front mount plates must be removed before mounting the dozer on the tractor. These gussets must be cut low enough to attach the front mount plates outside the frame carriage plates without interference.

INSTRUCTIONS FOR ATTACHING AMCO FARM TRACTOR DOZER MOUNTING KIT NO. DB-100 TO DAVID BROWN 1200 TRACTORS

- I. **Attaching Rear Mount Bracket:** (Fig. 14 No. 3) Remove the two bolts from the drawbar height adjustment bracket. Raise the drawbar to the position for maximum height. Replace the two bolts and tighten securely. Bolt the two rear mount brackets outside the two ears on the rear of the dozer's frame carriage (Fig. 1, No. 31). The rear mount bracket should be positioned with the single hole to the rear and up. These holes will later be used to mount the rear of



---

**Operating and  
Assembly Instructions  
AMCO Dozer Blade**

*MODEL NO. 800 Straight, Tilt and Angle*

**EFFECTIVE DATE**

**NOVEMBER 1, 1967**

---

***Alexander Manufacturing Company***

*Manufacturers of Quality-Built Farm and  
Industrial Equipment*

**YAZOO CITY, MISSISSIPPI, USA**

**P. O. Box 107**

**Phone 746-4464**