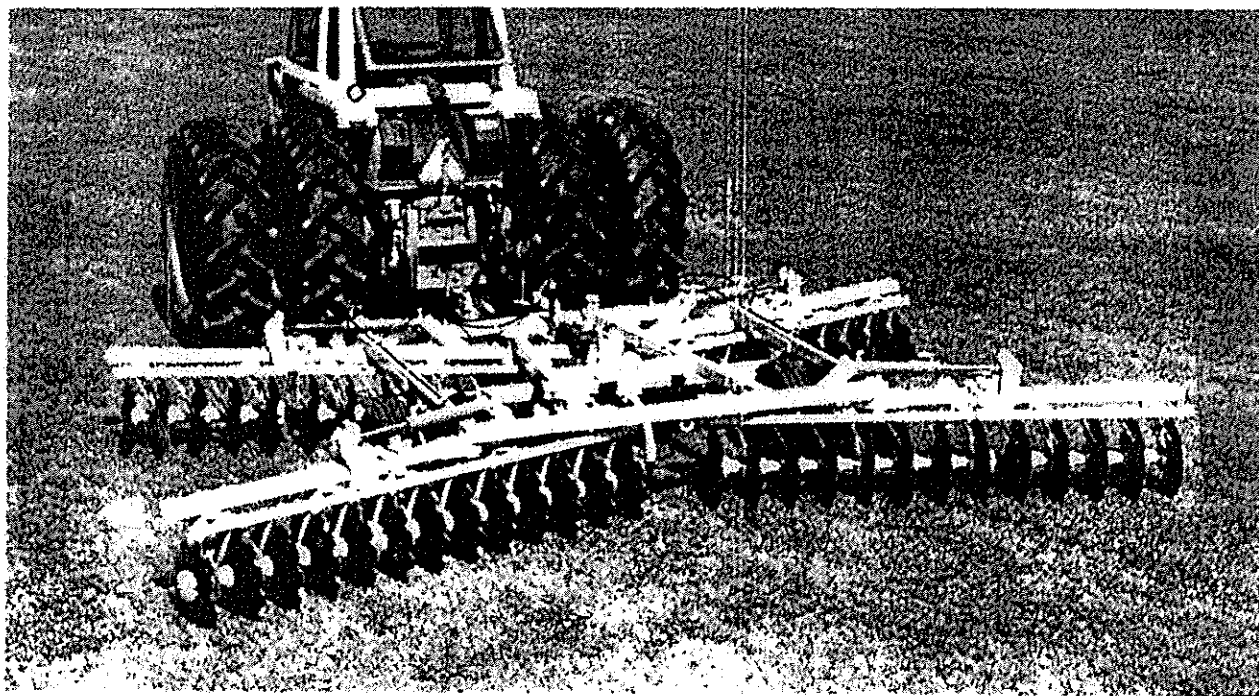




**PARTS CATALOG      SET-UP**  
**OPERATION — MAINTENANCE      INSTRUCTIONS**

**D21B**

**HD21B**



**AMCO MANUFACTURING, INC.**

800 South Industrial Prkway. P. O. Box 1107 Yazoo City, Mississippi 39194

Phone 662-746-4464 Fax 662-746-6825 Toll Free 800-748-9022

Website [www.amcomfg.com](http://www.amcomfg.com)

## SAFETY SUGGESTIONS



**THIS SAFETY ALERT SYMBOL INDICATES IMPORTANT SAFETY MESSAGES IN THIS MANUAL. WHEN YOU SEE THIS SYMBOL, CAREFULLY READ THE MESSAGE THAT FOLLOWS AND BE ALERT TO THE POSSIBILITY OF PERSONAL INJURY.**



**CAUTION** *Never stand between tractor and disk harrow when hitching unless all controls are in neutral and the brakes are locked.*



**CAUTION** *Park or block the disk harrow so it will not roll when disconnected from the tractor drawbar.*



**CAUTION** *When working on disk harrows, care should be exercised in handling or tightening bolts near disk blades to avoid injury.*



**CAUTION** *Always secure for transport by using the lock pin and wing lock pins.*



**CAUTION** *Never clean, adjust or lubricate a disk harrow that is in motion.*



**CAUTION** *When transporting machinery over public roads, comply with your local and state laws regarding length, width and lighting.*



**CAUTION** *When trailing the harrow over public roads, the SMV Emblem must be used, for protection of tractor and motor vehicle operators.*



**CAUTION** *When transporting farm implements on public roads after dusk it is the responsibility of the operator to provide lighting and reflectors on the rear of the implement in accordance with your state law.*



**CAUTION** *All hydraulically or mechanically elevated operating components must be blocked to prevent accidental lowering or must be lowered to the ground when making adjustments or when the equipment is idle.*

## INSERT

When ordering parts for C21B & HC21B, all reference numbers are common except those listed below:

### C21B-44 Blade

Ref #4 - 100252A Gang Bolt 78 3/8" Long  
Ref #11 - 102396 Sleeve Insert 1.750D X .125 X 7 1/8" Long  
Ref #12 - 17026 End Bell

### HC21B-72 Blade

Ref #37 - 100251A Gang Bolt 71" Long  
Ref #37 - 100249A Gang bolt 56 3/4" Long  
Ref #24 - 17026 End Bell  
Ref #23 - 102396 Sleeve Insert 1.75 OD X .125 X 7-1/8" Long

## TABLE OF CONTENTS

General Specifications.....	2
Pull Tongue .....	3-4
Main Frame .....	5-6
Rockshaft .....	7-8
Center Tooth .....	9-10
Scraper-Standard .....	9-10
Scraper-Special .....	9-10
Feathering Blade .....	11
Hydraulic Circuit .....	12-13
Hydraulic Cylinders .....	14-15
Gangs	
Front Main Gang D21B .....	16-17
Rear Main Gang D21B .....	18-19
Front Main Gang HD21B .....	20-21
Rear Main Gang HD21B .....	22-23
Wing Gangs HD21B .....	24-25
Decals .....	26
Safety Instructions .....	27
General Torque Specifications .....	28
Assembly Instructions .....	29-30
Lubrication .....	31-33
Operating Instructions	
Adjustment for level disking .....	34-35
Center ridge .....	34-35
Center furrow .....	34-35
Outer ridges or furrows .....	34-35
Feathering blades .....	34-35
Ground speed and adjustments .....	34-35
Tractor speed .....	34-35
Operating procedure .....	34-35
Hitch adjustment .....	36-37
Disk angle adjustment .....	38-39
Gang lateral adjustment .....	40
Scraper adjustment .....	41
Hydraulic lift cylinder installation .....	42
Transport safety lock .....	43-44
Storage .....	45
Maintenance .....	45-46
Extra Equipment .....	47-51

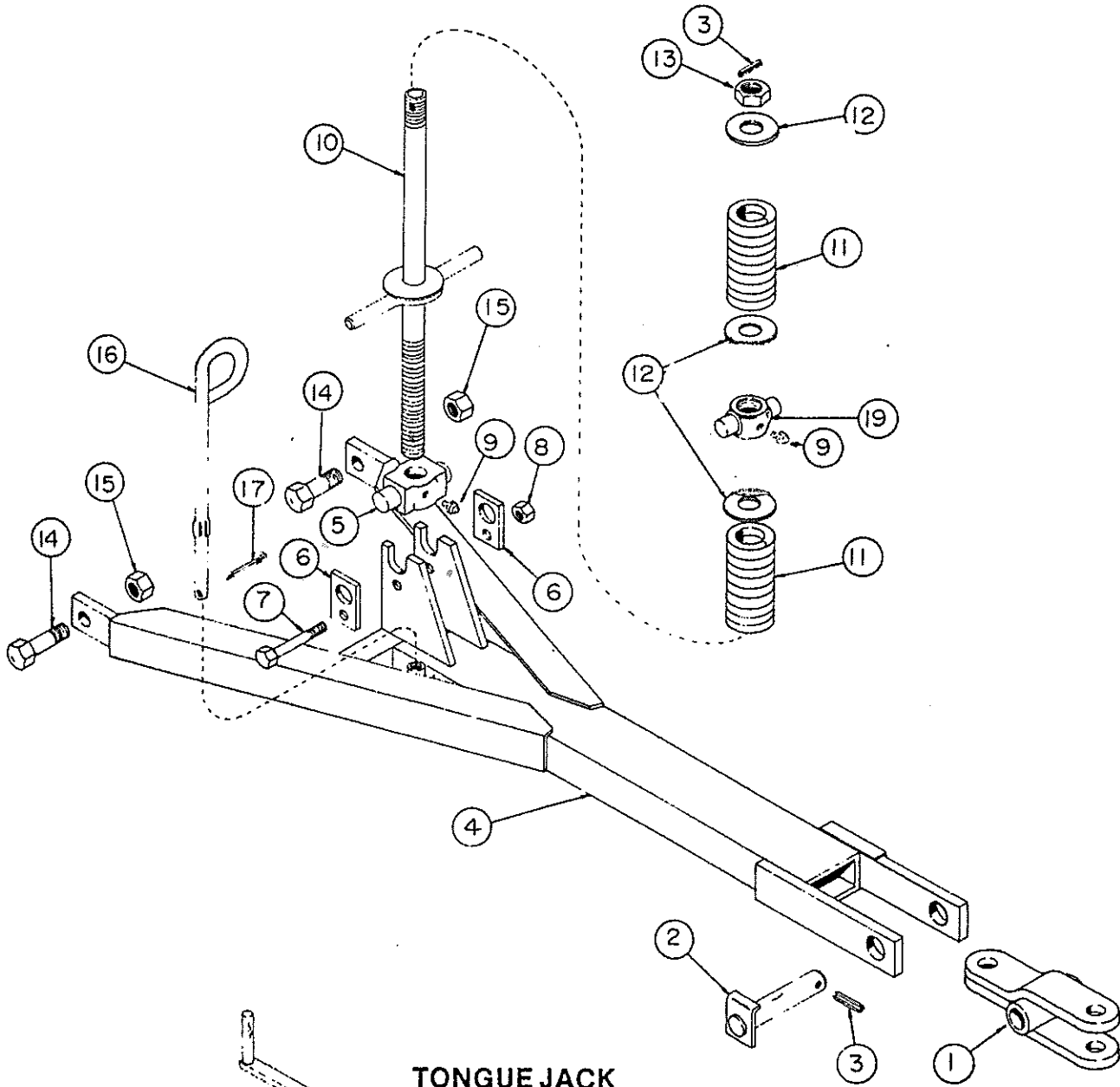
## GENERAL SPECIFICATIONS

FRAME: Main, heavy structural steel  
 GANG BOLTS: 1-1/8" Square  
 BEARINGS: Heavy Duty 2" Bore Sealed Ball Type - Greasable  
 DRAWBAR HITCH: Spring loaded, adjustable  
 CLEVIS: Heavy Duty, Reversible  
 LIFT: Hydraulic depth control and wheel lift transport  
 SCRAPERS: Heavy duty, adjustable  
 WHEELS: (4) 15 X 6 - 6 Bolt  
 DISK BLADES: 20 X 7 Ga. Plain  
 DISK BLADE OPTIONS:  
     20" X 7 Ga. Cutout Blades  
     22" X 7 Ga. Plain Blades  
     22" X 7 Ga. Cutout Blades

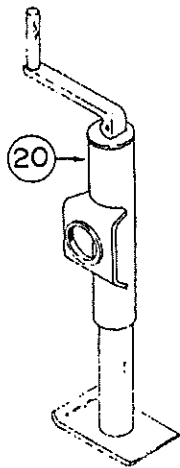
ATTACHMENTS & OPTIONS:  
     Feathering Blades  
     Center Tooth  
     4 X 8 Hydraulic Cylinder

Model	Cutting Width	No. of Disks	Transport Width	Approximate D.B.H.P. Required	Approximate Weight Pounds
D21B-3220-PBG	12'3"	32	14'6"	50 - 60	3,098
D21B-3620-PBG	13'6"	36	16'0"	55 - 75	3,285
D21B-4020-PBG	15'0"	40	16'0"	60 - 80	3,572
HD21B-4820-PBG	18'0"	48	14'6"	80 - 105	4,793
HD21B-5220-PBG	19'6"	52	14'6"	85 - 110	4,993
HD21B-5620-PBG	21'0"	56	14'6"	90 - 115	5,218

# PULL TONGUE



## TONGUE JACK (OPTIONAL)

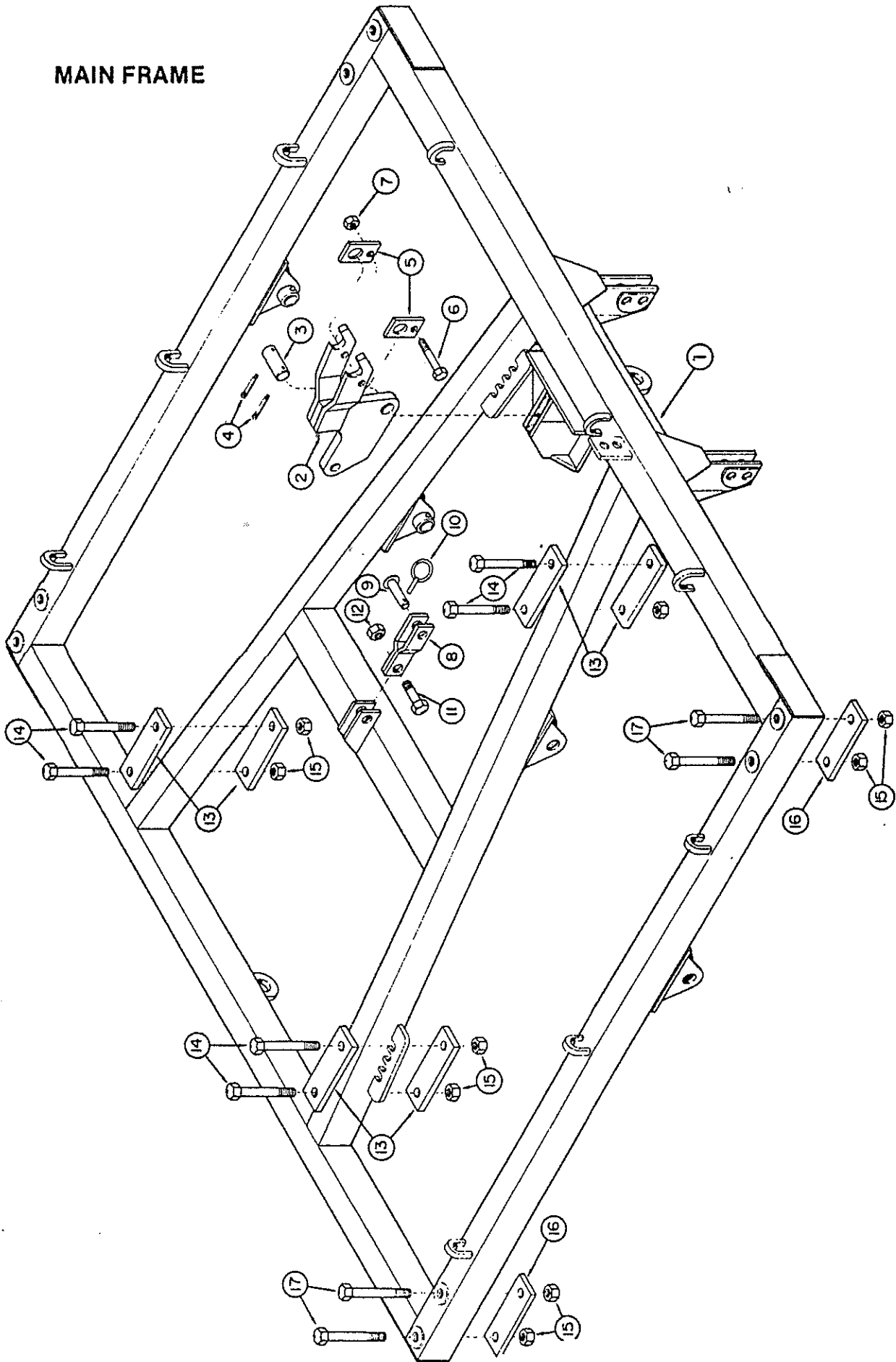


AMCO  
D21B  
HD21B  
PULL TONGUE

11/23/51

Ref. No.	Part No.	Description	No. Req'd
1	0623	Clevis .....	1
2	20246	Pin-Clevis .....	1
3	10910	Pin-Roll 5/16 x 2 1/4 .....	2
4	0625 A	Tongue-Pull .....	1
5	9919A	Stabilizer Swivel-Class 30 Grey Iron .....	1
6	9628	Trunion-Clamp .....	2
7	10666	Bolt-Machine 5/8 x 5 NC, PL, GR5 .....	1
8	10299	Nut-Lock 5/8 NC, PL .....	1
9	11081	Fitting-Grease 5/16 Straight-Drive In .....	2
10	0635A	Assy. Stabilizer Rod .....	1
11	10460	Spring .....	2
12	10872	Cut Washer 1 3/8" PL.....	3
13	11279	1-3/8 NC Slotted Nut .....	1
14	10373	Bolt-Machine 1 x 3 1/2 NC, PL.....	2
15	10868	Nut-Lock 1" NC, PL.....	2
16	100061	Hose Holder.....	1
17	10075	Pin-Cotter 1/4 x 1 1/2.....	1
19	9892	Swivel-Class 30 Grey Iron .....	1
20	11261	Jack.....	1

# MAIN FRAME





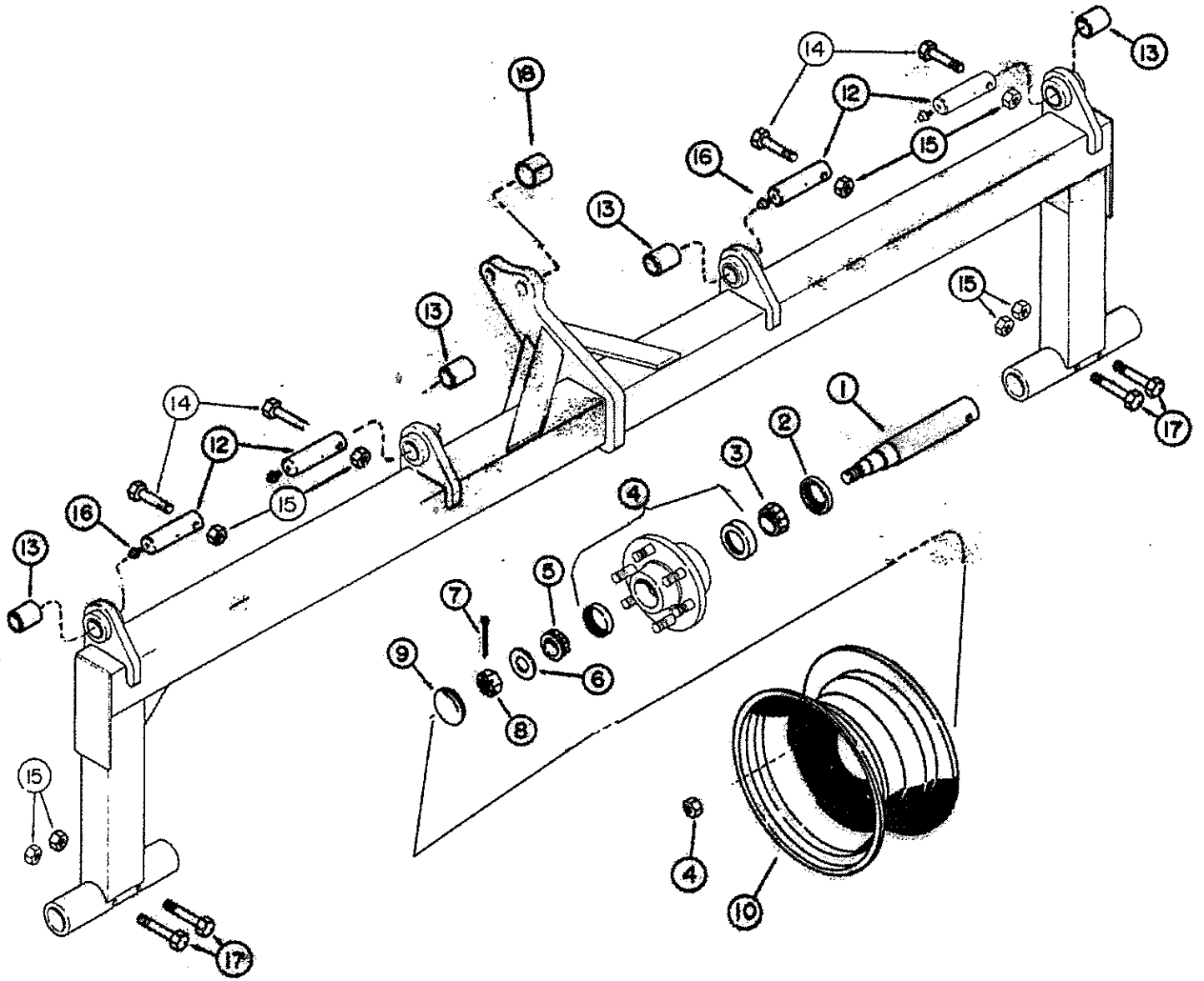
AMCO D21B - HD21B

MAIN FRAME

Ref. No.	Part No.	Description	No. Req'd
1	0811	Frame - Main (Hydraulic Models)	1
2	0710	Mount-Rear Cylinder	1
3	6388	Pivot - Pin 1 1/2 x 3 1/2 Long	1
4	10087	Pin - Cotter 1/4 x 2	2
5	9628	Clamp - Trunion	2
6	10043	Bolt - Machine 5/8 x 6 1/2 NC, PL, GR5	1
7	10299	Nut - Lock 5/8 NC, PL	1
8	0636	Strap - Transport	1
9	0388	Pin - Transport	1
10	10317	Pin - Klik 1/4	1
11	11025	Bolt - Machine 1 x 3 NC, PL, GR5	1
12	10868	Nut - Lock 1" NC, PL	1
13	9855	Bracket - Angle Set 3/4 x 3 x 9 1/4 Long	8
14	11102	Bolt - Machine 7/8 x 10 NC, PL	8
15	10396	Nut - Lock 7/8 NC, PL	8
16	9856	Strap 3/4 x 3 x 9 Long	4
17	10945	Bolt - Machine 7/8 x 9 NC, PL	8

Use 8 - #11691 Flange Lock Nuts on outside of main frame instead of  
 8 - #10396 Lock Nuts.

# ROCKSHAFT

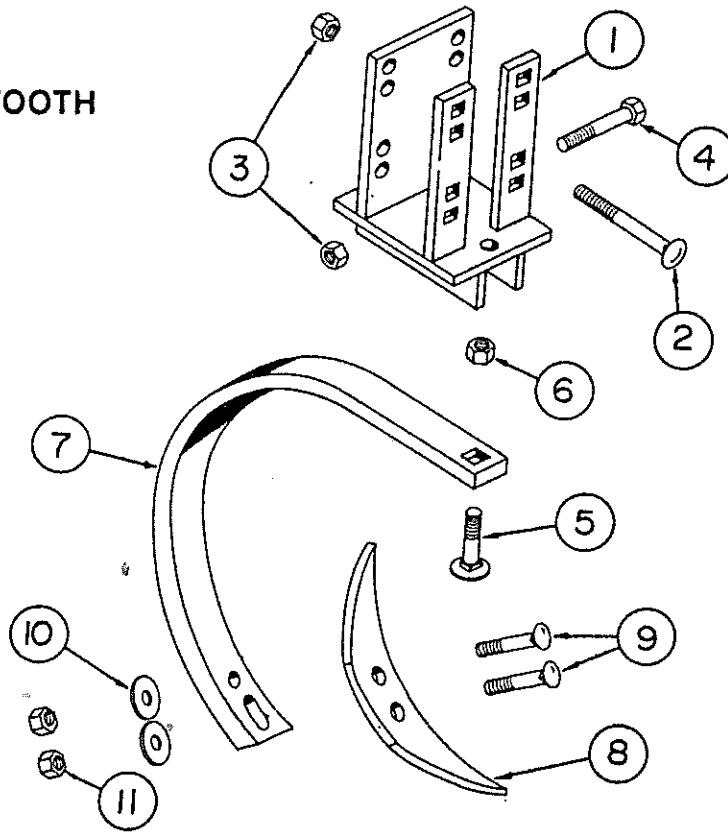


AMCO D21B - HD21B

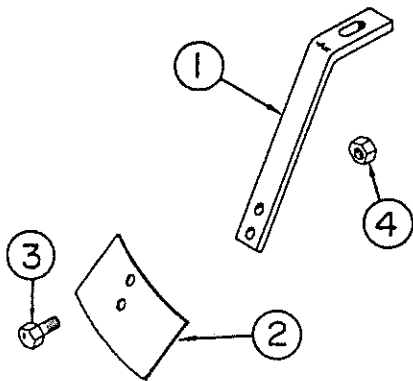
ROCKSHAFT

Ref. No.	Part No.	Description	No. Req'd	
			Single Wheel	Dual Wheel
1	10880	Spindle-1-15/16 Dia.....	2	4
2	10256	Seal .....	2	4
3	10258	Cone-Inner Timken 342A.....	2	4
4	11297	Hub W/2 Cups & 6 Lug Bolts.....	2	4
4	10257	Cup-Inner-Timken 332.....	2	4
4	10261	Cup-Outer-Timken 14276.....	2	4
4	11299	Bolt-Hub ½ X 1-20 NF.....	12	24
4	11046	Nut-Hub 1/2" NF.....	12	24
5	10262	Cone-Outer Timken 14137A.....	2	4
6	10263	Washer - 7/8 .....	2	4
7	10291	Pin-Cotter 5/32 X 1¼.....	2	4
8	10264	Nut-7/8 NF Slotted .....	2	4
9	10242	Cap - Hub .....	2	4
10	10265	Wheel - 15 X 6 6-Hole.....	2	4
10	10936	Wheel - 15 X 8 6-Hole(Optional)	2	4
11	0626	Rockshaft.....	1	1
12	9209	Pin-Retainer 1½ Dia. X 5 Long....	4	4
13	9270	Bushing-Bronze 1-3/4 O.D. X 1½ I.D. X 2 Long .....	4	4
14	10765	Bolt-Machine 3/8 X 2½NC, PL,GR5..	4	4
15	10509	Nut-Lock 3/8 NC,PL.....	6	8
16	11081	Fitting-Grease 5/16 Straight- Drive In.....	4	4
17	10773	Bolt-Machine 3/8 X 3½ NC,PL,GR5..	2	4
18	11492	Bushing 1-1/4 OD X 1 I.D.-1" Long	1	1

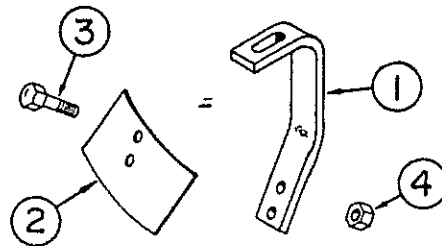
### CENTER TOOTH



### SCRAPER - STANDARD



### SCRAPER - SPECIAL



**CENTER TOOTH ATTACHMENT**

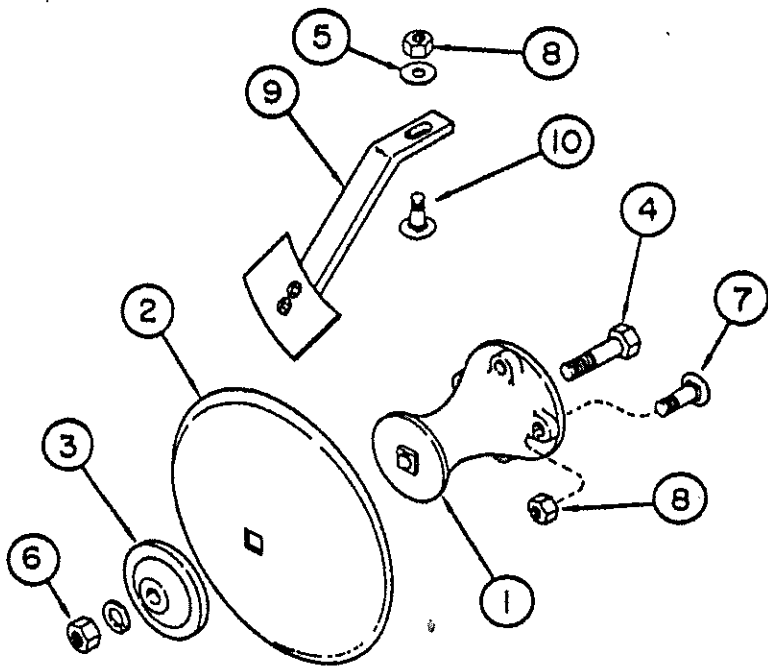
Ref. No.	Part No.	Description	No. Req'd
1	0654	Buster - Balk.....	1
2	10073	Bolt - Carriage 5/8 x 6 NC, PL.....	4
3	10299	Nut - Lock 5/8 NC, PL.....	5
4	10190	Bolt - Machine 5/8 x 4 NC, PL.....	1
5	10389	Bolt - Carriage 3/4 x 2 1/2 NC, PL.....	1
6	10300	Nut - Lock 3/4 NC, PL.....	1
7	10378	Tine.....	1
8	10379	Spike.....	1
9	10420	Bolt - Plow 1/2 x 2 1/4 NC, PL.....	2
10	10832	Washer - Cut 1/2 PL.....	2
11	10395	Nut - Lock 1/2 NC, PL.....	2
	BK-01-0002	CENTER TOOTH COMPLETE	

**SCRAPER - STANDARD**

Ref. No.	Part No.	Description	No. Req'd
1	100271	Scraper Leg.....	1
2	100270	Scraper Blade.....	1
3	11652	Hex Head Screw 1/2 X 1 1/4 NC, PLT, Gr5.....	2
4	10395	Lock Nut 1/2 NC, PL.....	2
	0788	Scraper RH Complete	
	0789	Scraper LH Complete	

**SCRAPER - SPECIAL**

Ref. No.	Part No.	Description	No. Req'd
1	100368	Shank - Special 9" Spacing.....	1
2	100270	Scraper Blade.....	1
3	10785	Hex Head Screw 1/2 x 1 1/2 NC, PL.....	2
4	10395	Lock Nut 1/2 NC, PL.....	2
	0824	Scraper - Special RH Complete, 9" Spacing	
	0825	Scraper - Special LH Complete, 9" Spacing	



**FEATHERING BLADE**

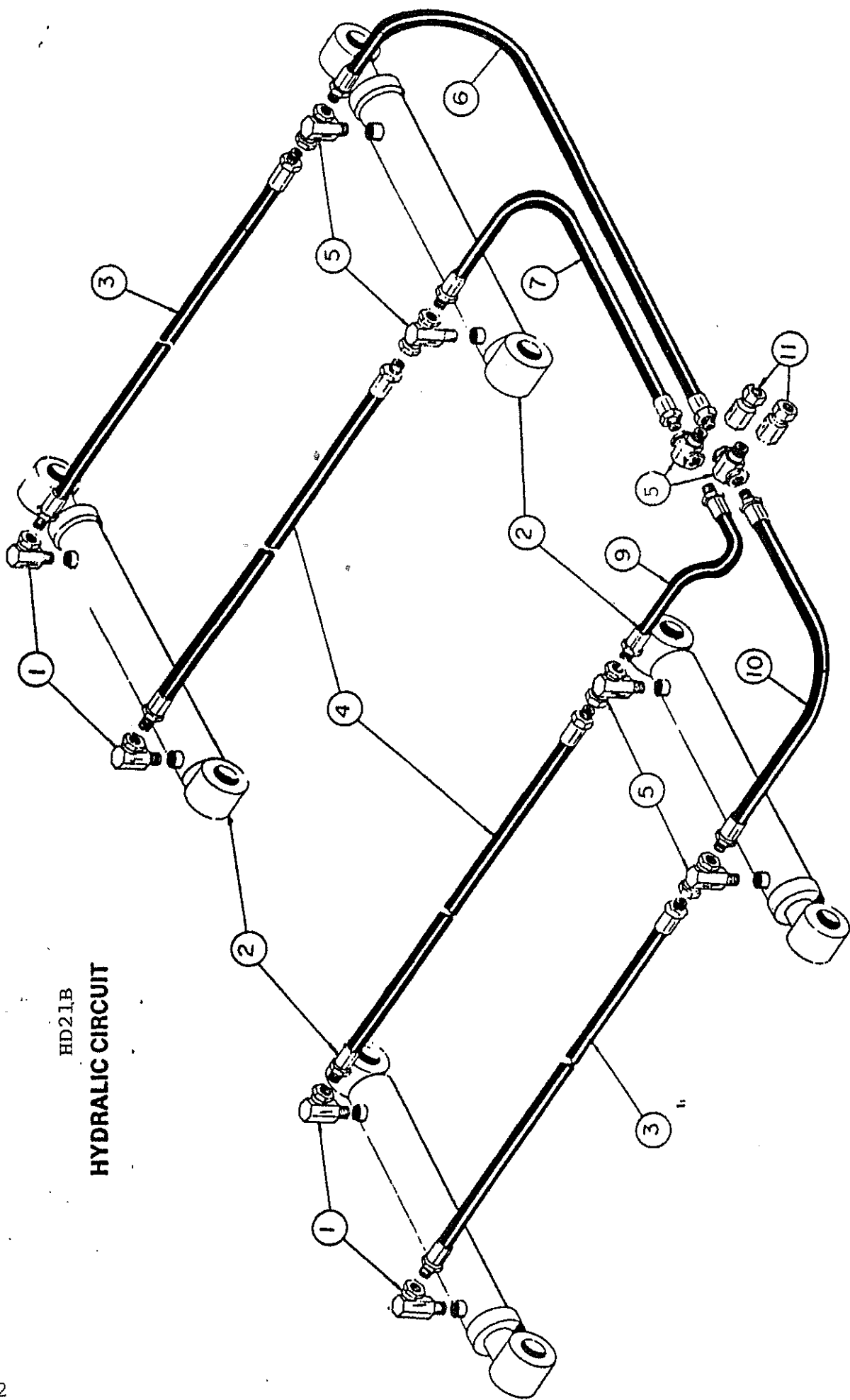
**AMCO**

D21B - HD21B

**FEATHERING BLADE**

Ref. No.	Part No.	Description	No. Req'd
1	7673	Spacer - Blade .....	2
2	3267	Blade - 16" Dia .....	2
3	7801	Cap - Blade .....	2
4	10189	Bolt - Hex 7/8 x 3 NC .....	2
5	10832	Cut Washer 1/2 PL .....	2
6	10396	Lock Nut 7/8 NC, PL .....	8
7	10238	Bolt - Carriage 1/2 x 2 1/2 NC, PL .....	10
8	10395	Nut - Lock 1/2 NC, PL .....	1
9	0788	Scraper - RH .....	1
9	0789	Scraper - LH .....	1
10	10870	Bolt - Carriage 1/2 x 1 1/2 NC, PL .....	2
	BK-01-0003	Feathering Blade Complete	

HD21B  
HYDRAIC CIRCUIT

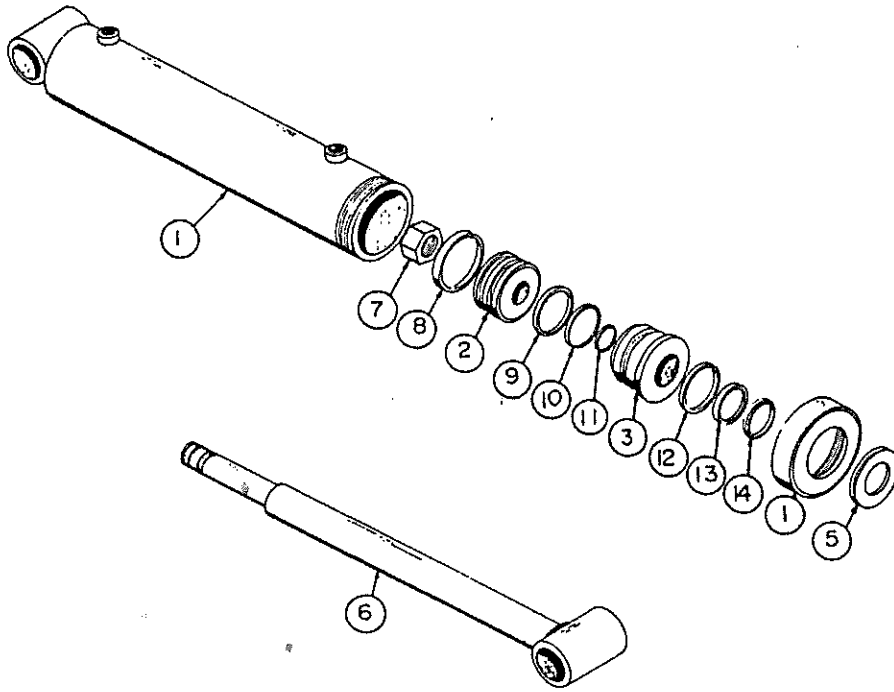


AMCO HD21B  
HYDRAULIC CIRCUIT

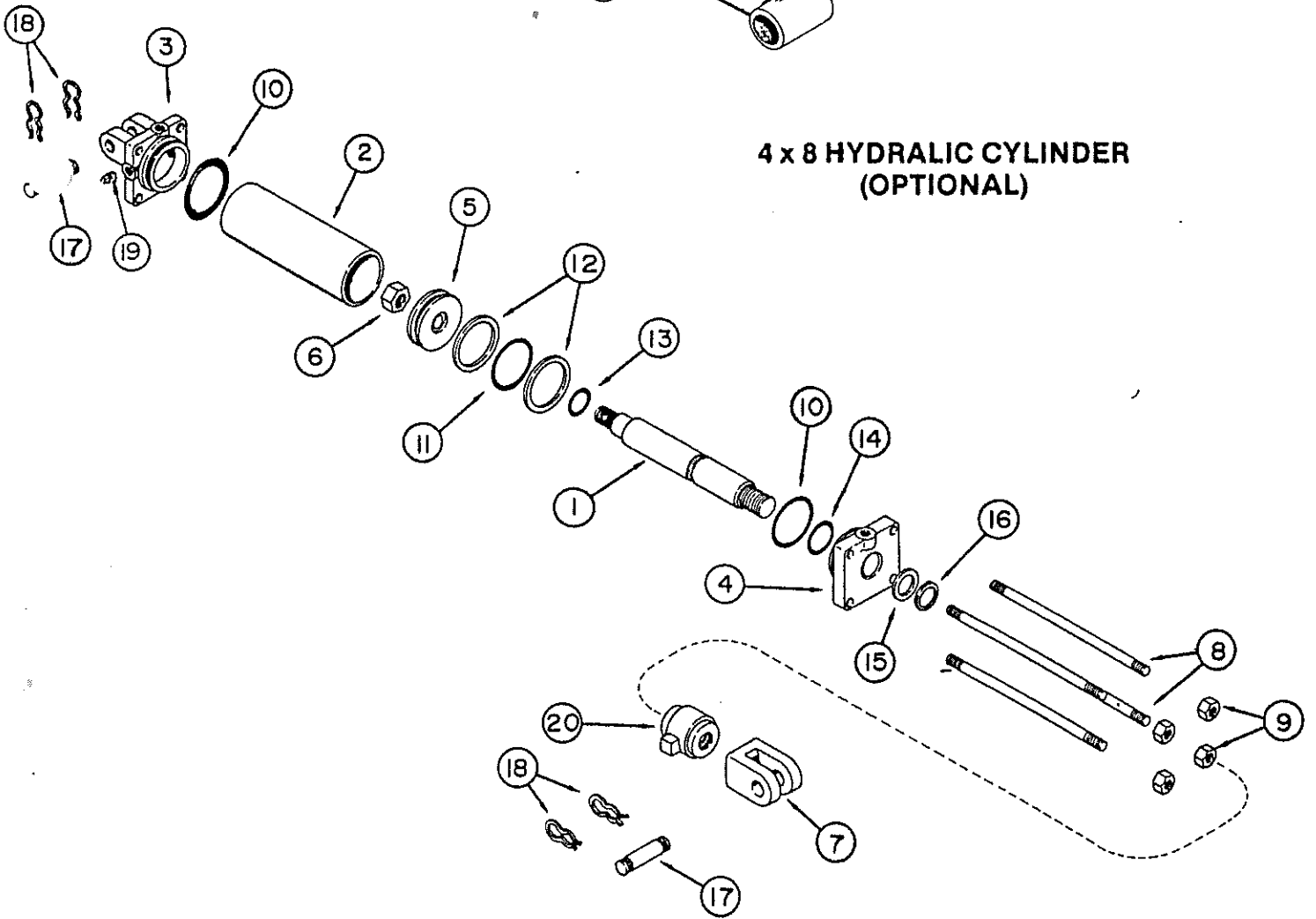
Ref. No.	Part No.	Description	No. Req'd
1	11127	Swivel Elbow 90° ½ NPTF male to ¼ NPT female .....	4
2	11155	Hydraulic Cylinder 2½ x 16 (Lantex 3349BL) .....	4
3	11123	Hose ¼ x 96" .....	2
4	11169	Hose ¼ x 90" .....	2
5	11126	Male Branch Tee ½ NPTF male to ¼ NPT female branches.....	6
6	11121	Hose ¼ x 72" .....	1
7	11167	Hose ¼ x 60" .....	1
9	11174	Hose ¼ x 30".....	1
10	11166	Hose ¼ x 48" .....	1
11	11157	Swivel Union ½ NPTF to ½ NPTF.....	2



### 2½ x 16 HYDRALIC CYLINDER



### 4 x 8 HYDRALIC CYLINDER (OPTIONAL)



**AMCO D21B - HD21B**  
**2½ x 16 HYDRAULIC CYLINDER**

Ref. No.	Part No.	Description	No. Req'd
	11155	Cylinder Complete (Lantex # 3349BL)	
1	11179	Barrel Assy. ....	1
2	11178	Piston .....	1
3	11176	Gland, U-Cup .....	1
5	11177	Collar .....	1
6	11180	Rod Assy. ....	1
	11158	AMCO REPAIR KIT*	
7	11188	*Lock Nut 7/8 NF .....	1
8	11186	*Wear Strip .....	1
9	11185	*Piston Seal .....	1
10	11184	*O Ring Seal, Piston .....	1
11	11187	*Rod Static Seal .....	1
12	11181	*Gland Static Seal .....	1
13	11182	*Rod Seal .....	1
14	11183	*Rod Wiper .....	1

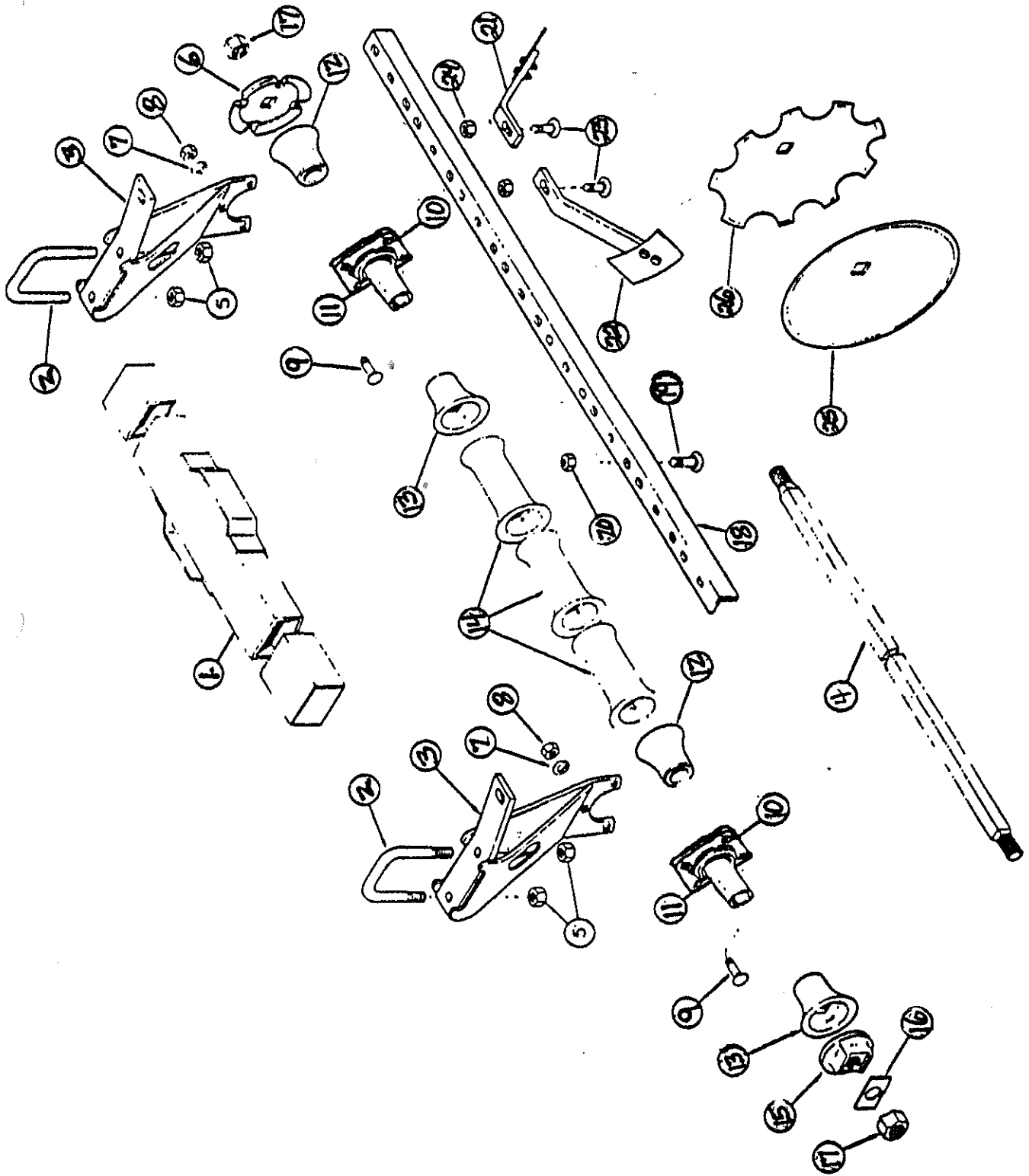
NOTE: Items 7-14 Sold in Seal Repair Kit only

**AMCO**  
**D21B**  
**HD21B**  
**4x8 HYDRAULIC CYLINDER (PRINCE # 8608) (OPTIONAL)**

Ref. No.	Part No.	Description	No. Req'd
	10934	Cylinder Complete (Prince #8608)	
1	10965	Rod — Piston Assembly .....	1
2	10966	Tube .....	1
3	10952	Butt .....	1
4	10967	Head Piston .....	1
5	10968	Piston .....	1
6	10980	Lock Nut 1-14 NF .....	1
7	10969	Clevis Assembly 1" Dia Pin .....	1
8	10970	Rod Tie .....	4
9	10139	Nut 5/8 — NC, PI .....	4
	10976	Kit Seal Repair (Prince #8600) .....	1
10	10958	"O" Ring .....	2
11	10959	"O" Ring .....	1
12	10960	Washer — Back Up .....	2
13	10971	"O" Ring .....	1
14	10972	"O" Ring .....	1
15	10973	Washer — Back Up .....	1
16	10974	Wiper .....	1
17	10956	Clevis Pin - 1" Dia. ....	2
18	10957	Clip Hair Pin .....	4
19	10978	Plug — Pipe ½ NPT. ....	1
20	10937	Stroke Control .....	1

Note: Items 10-16 Sold in Seal Repair Kit Only

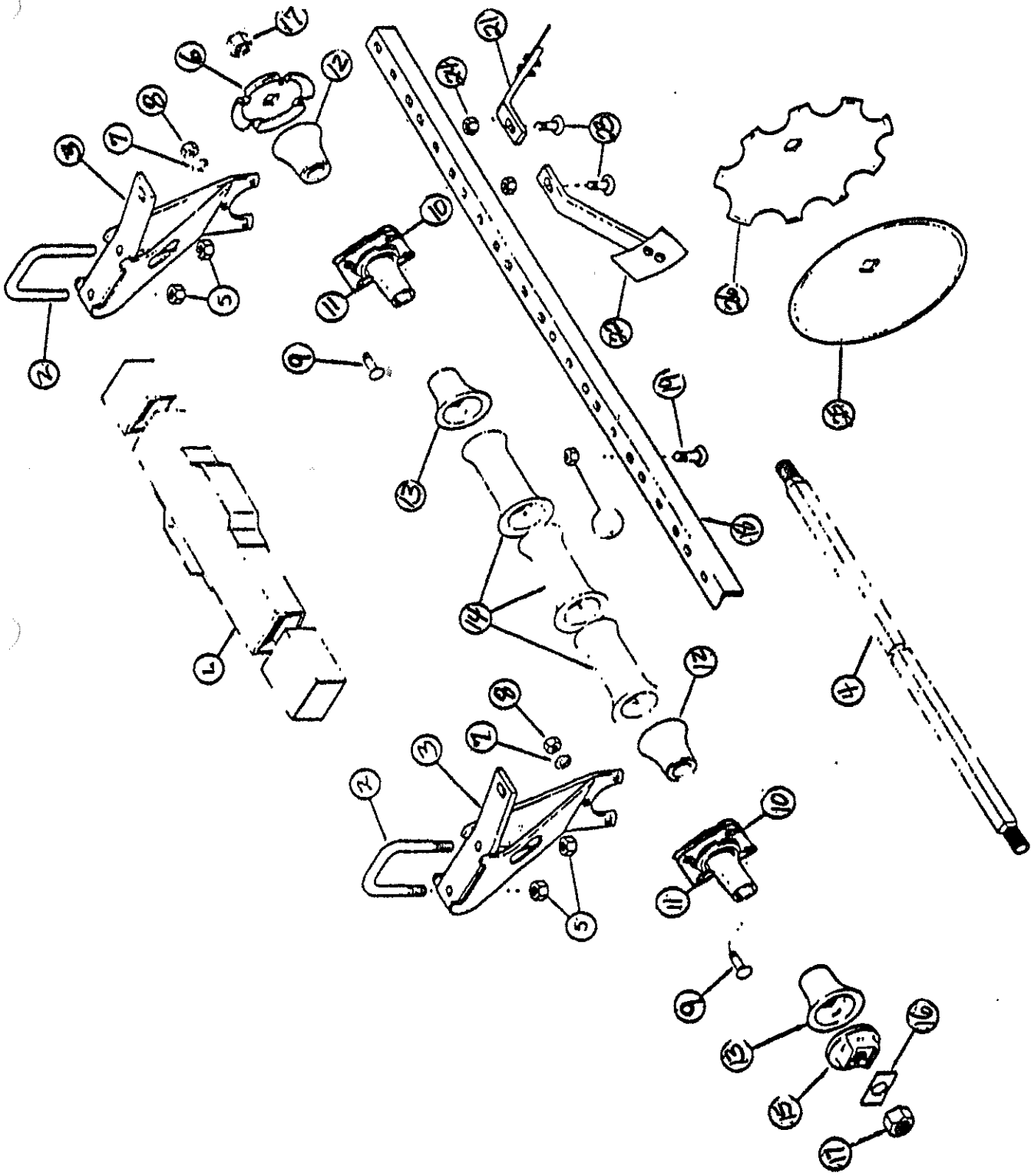
# FRONT MAIN GANG



AMCO D21B  
GANG FRAME - Front 9" Spacing

Ref. No.	Part No.	Description	32 Bl	36 Bl	40 Bl
1	0628	Frame - Gang.....	0	0	1
1	0816	Frame - Gang .....	1	0	0
1	0818	Frame - Gang .....	0	1	0
2	6513	U Bolt 3/4 Dia.....	3	3	4
3	0634	Riser - Bearing R. H.....	3	3	4
3	0633	Riser - Bearing L.H.....	3	3	4
4	102377	Bolt-Gang 68 5/16.....	1	0	0
4	102378	Bolt-Gang 77-1/2.....	0	1	0
4	102388	Bolt-Gang 50-1/8.....	0	0	1
4	102402	Bolt-Gang 31-3/4".....	0	0	1
5	10300	Nut-Lock 3/4 NC,PL.....	6	6	8
6	3412A	Washer-Bumper .....	1	1	2
7	10619	Washer-Lock 7/16 PL.....	9	9	12
8	10618	Nut-Hex 7/16 NC, PL.....	9	9	12
9	10068	Bolt-Carriage 7/16 X 1 1/2 NC,PL....	9	9	12
10	12071	Bearing ST491A.....	3	3	4
11	102369	Sleeve-Insert.....	3	3	4
12	17025	Bell-End Small.....	3	3	4
13	17024	Bell-End Large .....	3	3	4
14	6165	Spool-Spacer.....	4	5	4
15	2030	Washer-End Gang.....	1	1	2
16	2116	Plate-Lock.....	1	1	2
17	11035	Nut-Gang Bolt 1-1/8 NC,Hvy.....	2	2	4
18	9550	Bar-Scraper 70-1/16 Long.....	1	0	0
18	9551	Bar-Scraper 79-1/4.....	0	1	0
18	9548	Bar-Scraper 51-11/16.....	0	0	1
18	9476	Bar-Scraper 33-5/16.....	0	0	1
19	10135	Bolt-Carriage 5/8 X 1-3/4 NC,PL..	3	3	4
20	11647	Nut-Lock 5/8 NC,PL, Flange .....	3	3	4
21	0788	Scraper-R.H.....	7	8	9
22	0789	Scraper - L.H.....	7	8	9
23	10870	Bolt-Carriage 1/2 X 1 1/2 NC,PL,GR5.	7	8	9
24	11646	Nut-Lock 1/2 NC, PL, Flange.....	7	8	9
26	3254	Blade - 20 X 7 Ga. C.O.....	8	9	9
25	3262	Blade - 20 X 7 Ga. Plain.....	8	9	9
25	3269	Blade - 22 X 7 Ga. Plain.....	8	9	9
26	3271	Blade - 22 X 7 Ga. C.O.....	8	9	9
25	3268	Blade - 18 X 9 Ga. Plain.....	0	0	1
26	3196	Blade - 18 X 10 Ga. C.O.....	0	0	1

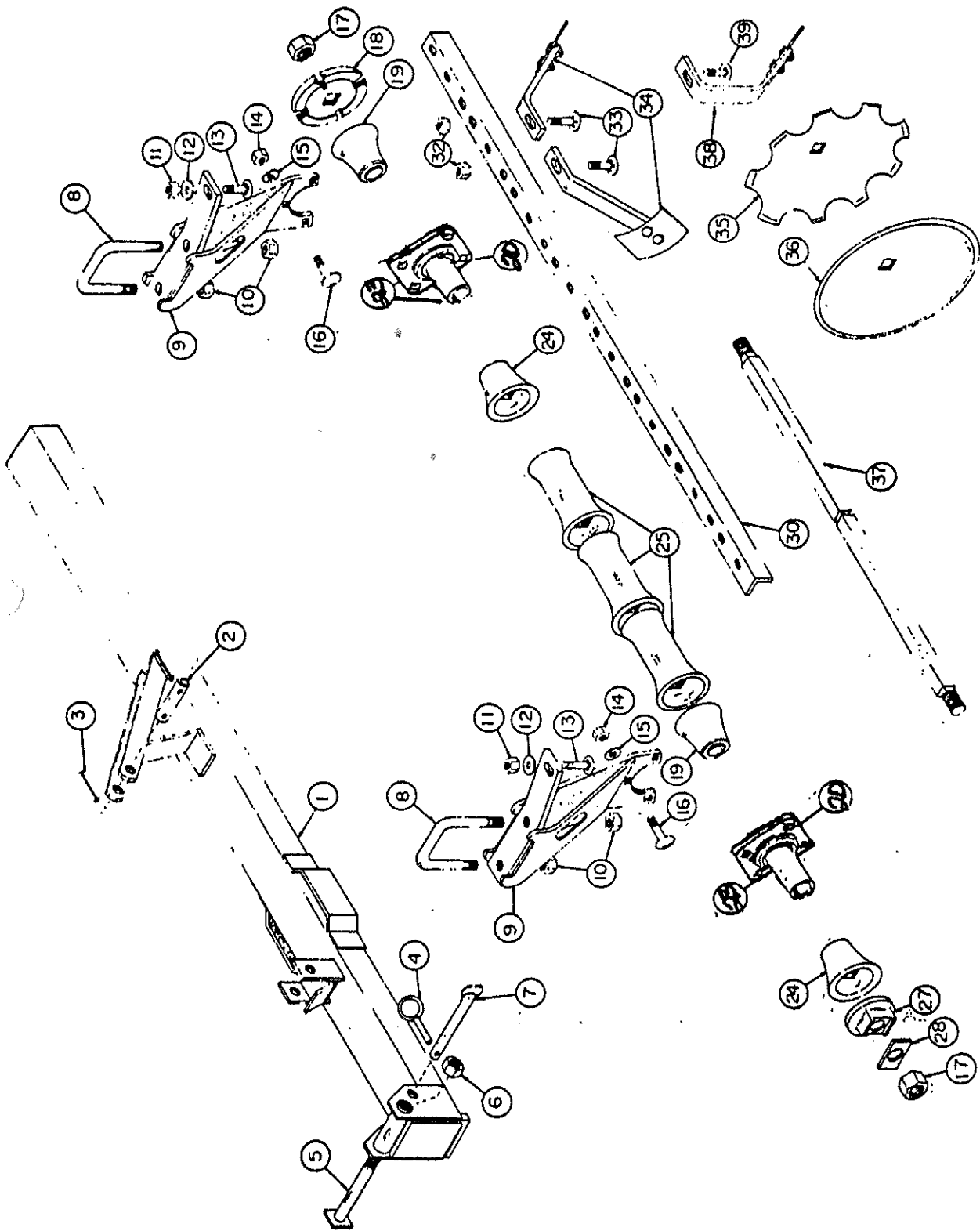
REAR MAIN GANG



AMCO D21B  
GANG FRAME - Rear 9" Spacing

Ref. No.	Part No.	Description	32 BL	36 BL	40 BL
1	0647	Frame - Gang .....	0	0	1
1	0817	Frame - Gang .....	1	0	0
1	0819	Frame - Gang .....	0	1	0
2	6513	U-Bolt-3/4 Dia.....	3	3	4
3	0634	Riser-Bearing R.H.....	3	3	4
3	0633	Riser-Bearing L.H.....	3	3	4
4	102377	Bolt-Gang 68-5/16.....	1	0	0
4	102378	Bolt-Gang 77-1/2.....	0	1	0
4	102403	Bolt-Gang 40-15/16.....	0	0	2
5	10300	Nut-Lock 3/4 NC,PL.....	6	6	8
6	3412A	Washer-Bumper.....	1	1	2
7	10619	Washer-Lock 7/16 PL.....	9	9	12
8	10618	Nut-Hex 7/16 NC,PL.....	9	9	12
9	10068	Bolt-Carriage 7/16 X 1½ NC,PL...	9	9	12
10	12071	Bearing ST491A.....	3	3	4
11	102369	Sleeve-Insert.....	3	3	4
12	17025	Bell-End Small.....	3	3	4
13	17024	Bell-End Large .....	3	3	4
14	6165	Spacer-Spool.....	4	5	4
15	2030	Washer-End Gang.....	1	1	2
16	2116	Plate-Lock.....	1	1	2
17	11035	Nut-Gang Bolt 1-1/8 NC,hvy.....	2	2	4
18	9550	Bar-Scraper 70-1/16 Long.....	1	0	0
18	9551	Bar-Scraper 79-1/4.....	0	1	0
18	9475	Bar-Scraper 42-1/2.....	0	0	2
19	10135	Bolt-Carriage 5/8 X 1-3/4 NC,PL.	3	3	4
20	11647	Nut-Lock 5/8 NC,PL, Flange.....	3	3	4
21	0788	Scraper- R.H.....	7	8	9
22	0789	Scraper-L.H.....	7	8	9
23	10870	Bolt-Carriage 1/2 X 1½ NC,PL,GR5	7	8	9
24	11646	Nut-Lock 1/2 NC, PL, Flange ....	7	8	9
26	3254	Blade - 20 X 7 Ga. C.O.....	8	9	9
25	3262	Blade - 20 X 7 Ga. Plain.....	8	9	9
25	3269	Blade - 22 X 7 Ga. Plain.....	8	9	9
26	3271	Blade - 22 X 7 Ga. C.O.....	8	9	9
25	3268	Blade - 18 X 9 Ga. Plain.....	0	0	1
26	3196	Blade - 18 X 10 Ga. C. O.....	0	0	1

# FRONT MAIN GANG

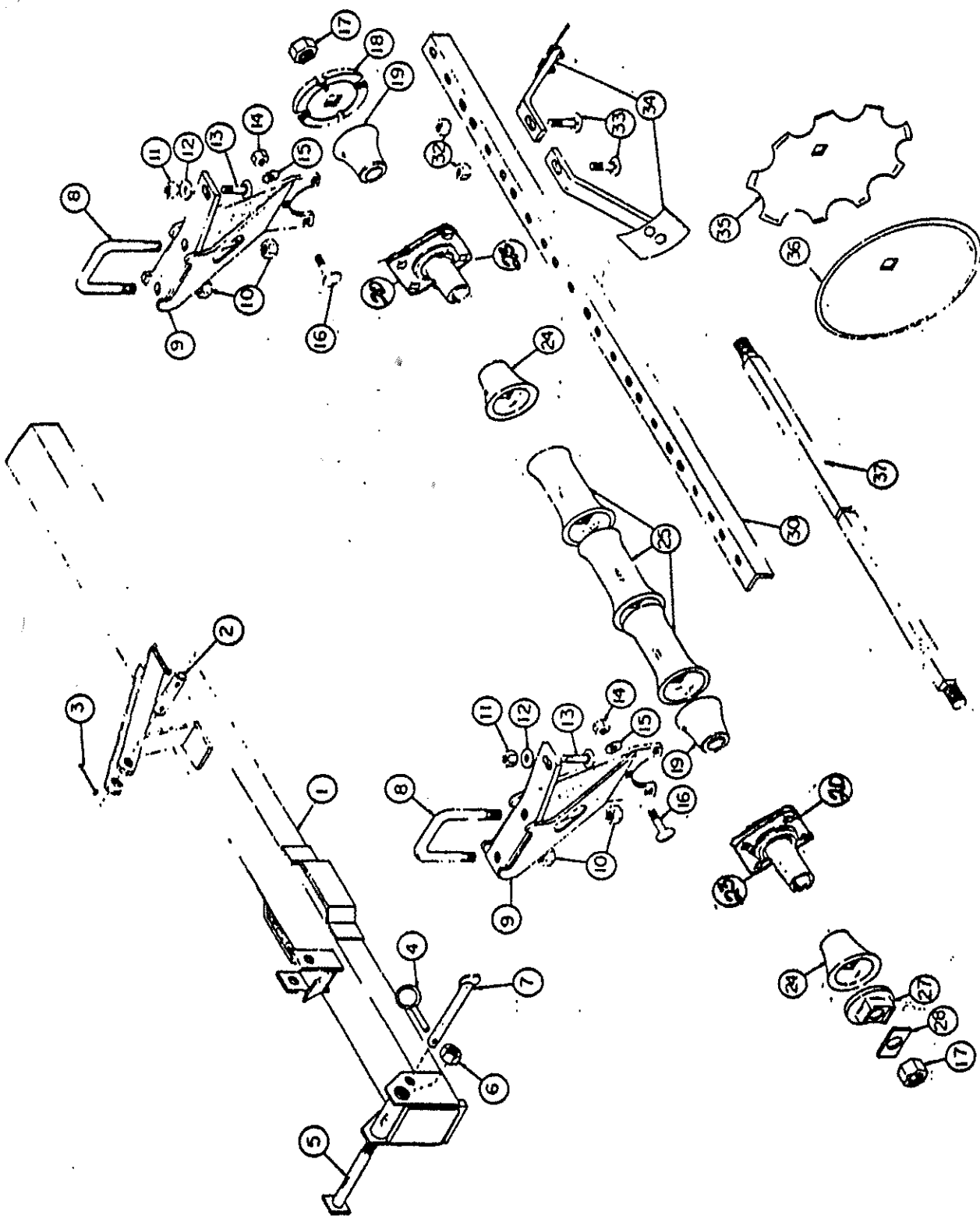


AMCO HD21B  
FRONT MAIN GANG

Ref. No.	Part No.	Description	No. Req'd
1	0806	Gang Frame Front.....	1
2	6554	Hitch Pin 1" Dia. X 5 Long.....	1
3	10910	Roll Pin 5/16 X 2¼.....	2
4	10317	Klik Pin 1/4.....	1
5	0734	Pivot Pin 1-1/16 Dia.....	1
6	10868	Lock Nut 1" NC,PL.....	1
7	9532	Pin Hold Down.....	1
8	6513	"U" Bolt 3/4 Dia.....	3
9	0633	Bearing Riser LH.....	3
9	0634	Bearing Riser RH.....	3
10	10300	Lock Nut 3/4 NC,PL.....	6
11	10299	Lock Nut 5/8 NC,PLT.....	3
12	10059	Cut Washer 5/8 PLT.....	3
13	10135	Carriage Bolt 5/8 X 1-3/4 NC,PL.....	3
14	10618	Hex Nut 7/16 NC,PL.....	12
15	10619	Lock Washer 7/16 Pl.....	12
16	10068	Carriage Bolt 7/16 X 1½ NC,PL.....	9
17	11035	Nut Gang Bolt 1-1/8 NC, HEAVY.....	2
18	3412A	Bumper Washer.....	1
19	17024	End Bell - Small.....	3
20	12071	Bearing.....	3
23	102369	Insert Sleeve 1.9375O.D. 3/16WT.5-5/8 Long.	3
24	17025	End Bell - Large.....	3
25	6165	Spacer Spool.....	4
27	2030	End Gang Washer.....	1
28	2116	Lock Plate 14 Ga. Sheet 2 X 3½.....	1
30	9550	Scraper Bar 70-1/16.....	1
32	11646	Lock Nut 1/2 NC, PL, Flange.....	7
33	10870	Carriage Bolt 1/2 X 1½ NC,PL, GR5.....	6
34	0788	Scrapers RH.....	7
34	0789	Scrapers LH.....	7
35	3254	Blade 20 X 7 Ga. C. O.....	8
35	3271	Blade 22 X 7 Ga. C.O.....	8
36	3262	Blade 20 X 7 Ga. Plain.....	8
36	3269	Blade 22 X 7 Ga. Plain.....	8
37	102377	Gang Bolt 68-5/16 Long.....	1
38	0824	Scraper - Special RH.....	1
38	0825	Scraper - Special LH.....	1
39	10710	Carriage bolt 1/2 X 2 NC,PL, GR5.....	1



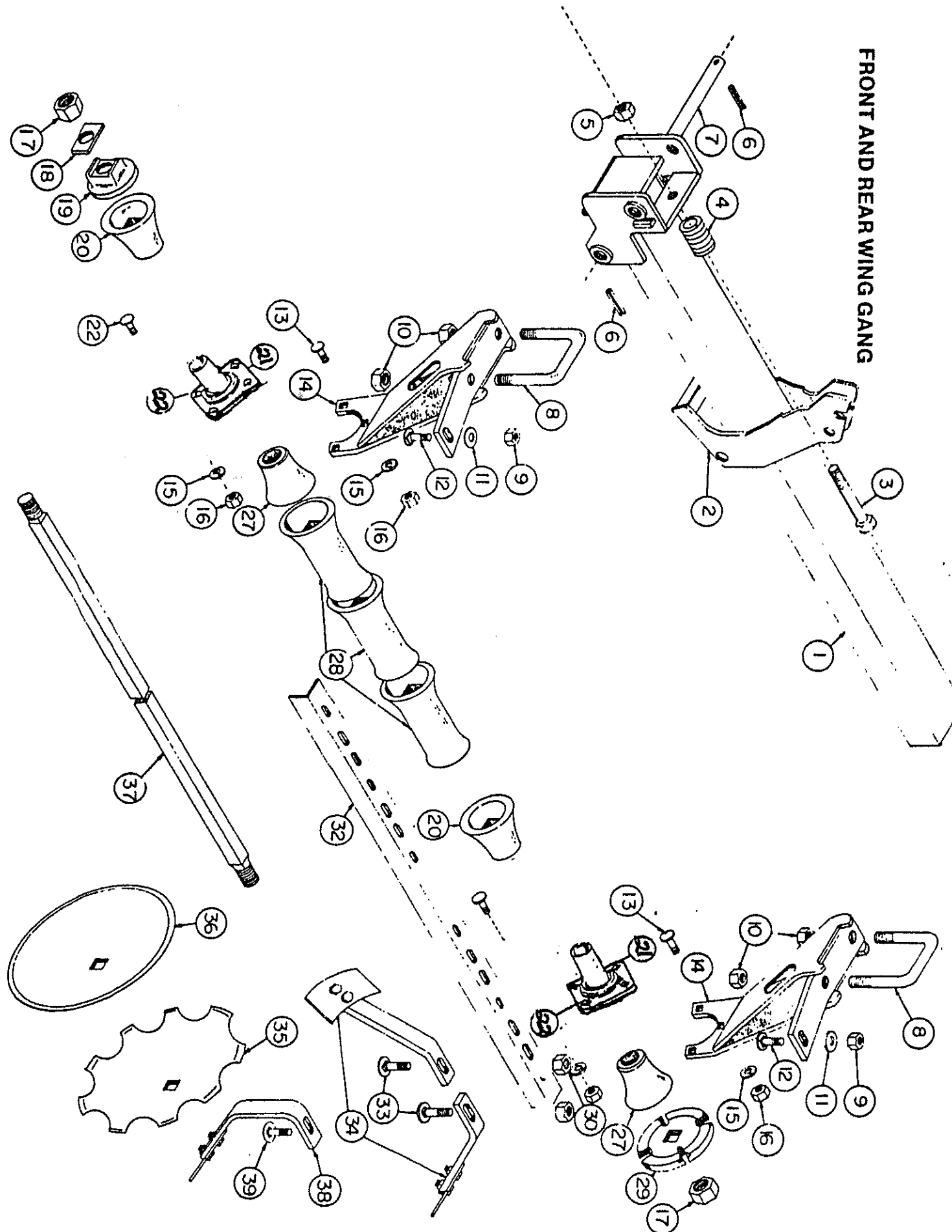
REAR MAIN GANG



**AMCO HD21B  
REAR MAIN GANG**

Ref. No.	Part No.	Description	No. Req'd
1	0807	Gang Frame Rear.....	1
2	6554	Hitch Pin 1" Dia. X 5 Long.....	1
3	10910	Roll Pin 5/16 X 2¼.....	2
4	10317	Klik Pin 1/4.....	1
5	0734	Pivot Pin 1-1/6 Dia.....	1
6	10868	Lock Nut 1" NC,PL.....	1
7	9532	Pin Hold Down.....	1
8	6513	"U" Bolt 3/4 Dia.....	3
9	0633	Bearing Riser LH.....	3
9	0634	Bearing Riser RH.....	3
10	10300	Lock Nut 3/4 NC,PL.....	6
11	10299	Lock Nut 5/8 NC,PLT.....	3
13	10135	Carriage bolt 5/8 X 1-3/4 NC,PL.....	3
14	10618	Hex Nut 7/16 NC,PL.....	12
15	10619	Lock Washer 7/16 PL.....	12
16	10068	Carriage bolt 7/16 X 1½, NC,PL.....	9
17	11035	Nut Gang Bolt 1-1/8 NC,HEAVY.....	2
18	3412A	Bumper Washer.....	1
19	17024	End Bell-Small.....	3
20	12071	Bearing.....	3
23	102369	Insert Sleeve 1.9375 O.D.3/16WT.5-5/8 Long...	3
24	17025	End Bell-Large.....	3
25	6165	Spacer Spool.....	4
27	2030	End Gang Washer.....	1
28	2116	Lock Plate 14 Ga. Sheet 2 X 3½.....	1
30	9550	Scraper Bar 70-1/16.....	1
32	11646	Lock Nut ½ NC,PL, Flange.....	7
33	10870	Carriage Bolt ½ X 1½ NC,PL,GR5.....	7
34	0788	Scraper RH.....	7
34	0789	Scraper LH.....	7
35	3254	Blade 20 X 7 Ga. C.O.....	8
35	3271	Blade 22 X 7 Ga. C.O.....	8
36	3262	Blade 20 X 7 Ga. Plain.....	8
36	3269	Blade 22 X 7 Ga. Plain.....	8
37	102377	Gang Bolt 68-5/16 Long.....	1

FRONT AND REAR WING GANG



HD21B  
FRONT & REAR WING GANGS

Ref. No.	Part No.	Description	4 Bld	5 Bld	6 Bld
1	0808	Wing Gang Frame .....	1	0	0
1	0809	Wing Gang Frame .....	0	1	0
1	0812	Wing Gang Frame .....	0	0	1
2	0810	Wing Latch .....	1	1	1
3	10666	Hex Head Mch Bolt 5/8X5NC,PL,GR5	1	1	1
4	10691	Spring 2" I.D. 3 Long .....	1	1	1
5	10299	Lock Nut 5/8 NC,PL.....	1	1	1
6	10910	Roll Pin 5/16 X 2¼ .....	2	2	2
7	100320	Latch Pin 1 1/16 Dia.....	1	1	1
8	6513	"U" Bolt 3/4 Dia. ....	2	2	2
9	10299	Lock Nut 5/8 NC,PL .....	2	2	2
10	10300	Lock Nut 3/4 NC, PL .....	4	4	4
12	10135	Carriage Bolt 5/8 X 1 3/4NC,PL.	2	2	2
13	10068	Carriage Bolt 7/16 X 1½NC,PL...	6	6	6
14	0633	Bearing Riser LH .....	2	2	2
14	0634	Bearing Riser RH .....	2	2	2
15	10619	Lock Washer 7/16 PL.....	8	8	8
16	10618	Hex Nut 7/16 NC,PL .....	8	8	8
17	11035	Nut Gang Bolt 1-1/8 NC, Heavy..	2	2	2
18	2116	Lock Plate .....	1	1	1
19	2030	End Gang Washer .....	1	1	1
20	17025	End Bell-Large .....	2	2	2
21	102369	Insert Sleeve .....	2	2	2
22	12071	Bearing ST491A .....	2	2	2
27	17024	End Bell - Small .....	2	2	2
28	6165	Spacer Spool .....	1	2	3
29	3412A	Bumper Washer .....	1	1	1
30	11646	Lock Nut ½ NC,PL,Flange .....	4	5	6
32	9476	Scraper Bar 33 5/16 .....	1	0	0
32	9475	Scraper Bar 42½ .....	0	1	0
32	9548	Scraper Bar 51 11/16 .....	0	0	1
33	10870	Carriage Bolt ½ X 1½ NC,PL,GR5	3	4	5
34	0788	Scraper RH .....	3	4	5
34	0789	Scraper LH .....	3	4	5
35	3196	Blade 18 X 10 Ga. C.O.....	1	1	1
35	3254	Blade 20 X 7 Ga. C.O.....	3	4	5
35	3271	Blade 22 X 7 Ga. C.O.....	3	4	5
36	3268	Blade 18 X 9 Ga. Plain .....	1	1	1
36	3262	Blade 20 X 7 Ga. Plain .....	3	4	5
36	3269	Blade 22 X 7 Ga. Plain .....	3	4	5
37	102402	Gang Bolt 31-3/4 .....	1	0	0
37	102403	Gang Bolt 40-15/16.....	0	1	0
37	102388	Gang Bolt 50-1/8.....	0	0	1
38	0824	Scraper Special RH(REAR ONLY)..	1	1	1
38	0825	Scraper Special LH (REAR ONLY).	1	1	1
39	10710	Carriage Bolt ½ X 2 NC,PL,GR5 (REAR ONLY).....	1	1	1

①

# AMCO

②

**⚠ WARNING**

1. BEFORE OPERATING - STUDY OPERATORS MANUAL SAFETY MESSAGES AND SAFE OPERATING PROCEDURES, READ SAFETY SIGNS ON THIS MACHINE.

2. TRANSPORT ON PUBLIC ROADS - OBSERVE FEDERAL, STATE AND LOCAL REGULATIONS; DISPLAY SAFETY EMBLEM; ATTACH PROPER STRENGTH SAFETY CHAIN TO TOWED IMPLEMENT; AND LIMIT MAXIMUM SPEED TO 20mph (32 km/h).

3. LOWER OR BLOCK ALL ELEVATED COMPONENTS BEFORE SERVICING OR LEAVING THIS MACHINE.

③

**⚠ WARNING**

**FOLDING WINGS — CAN CAUSE INJURY BY:**

1. DROPPING DUE TO HYDRAULIC FAILURE, AIR IN CYLINDERS, OR ACCIDENTAL CONTROL MOVEMENT.

2. CONTACTING ELECTRIC LINES OR OVERHEAD OBSTRUCTIONS.

**STAY CLEAR — CHARGE CYLINDERS WITH OIL TO REMOVE AIR BEFORE FIRST USE. SECURE WINGS FOR TRANSPORT, MEASURE OVERALL TRANSPORT HEIGHT AND ASSURE CLEARANCE.**

**MAINTENANCE INSTRUCTIONS**

1. Keep all bolts tight. Check after first 50 hours or one week's operation. Visually inspect all bolts daily.
2. Keep wheel bearings properly adjusted. Clean and repack each season or every 300 hours. Replace all worn or damaged parts when repairing.
3. Keep gang bolts tight! Tighten after first day's operation. Do not run with loose disk blades. If gang bolts have been operated in a loose condition, retighten, then tighten again after 30 minutes use, again after 4 to 5 hours, and again after 8 to 10 hours.
4. Grease gang bearings daily with a hand grease gun and a good grade of clean, number 2, lithium soap base grease. Always wipe fittings clean before greasing. Apply grease until old or dirty grease is purged from bearings. Avoid high-pressure greasing.
5. Inspect for damaged or misaligned parts if gangs do not turn smoothly by hand. Bearings will fail prematurely if operated with misaligned or damaged gang parts. If a gang is operated for one or more hours following a bearing failure, replace all bearings on the gang.

Refer to operator's manual for other important maintenance instructions.








11716

**AMCO D21B & HD21B  
DECALS**

Ref. No.	Part No.	Description	No. Req'd
1	11465	Decal - AMCO .....	3
2	11741	Decal - Warning .....	1
3	11743	Decal - Warning .....	1
4	11716	Decal - Maintenance .....	1

## GENERAL TORQUE SPECIFICATION TABLE

ALL BOLTS SHOULD BE TIGHTENED TO THE  
RECOMMENDED TORQUES SHOWN IN THE  
"GENERAL TORQUE SPECIFICATION TABLE"

<b>GENERAL TORQUE SPECIFICATION TABLE</b>							
USE THE FOLLOWING TORQUES WHEN SPECIAL TORQUES ARE NOT GIVEN							
SAE Grade No		2		5		8 *	
Bolt head identification marks as per grade NOTE: Manufacturing Marks Will Vary				  		  	
Bolt Size		Torque		Torque		Torque	
		Foot Pounds		Foot Pounds		Foot Pounds	
Inches	Millimeters	Min	Max	Min	Max	Min	Max
1/4	6.35	5	6	9	11	12	15
5/16	7.94	10	12	17	20.5	24	29
3/8	9.53	20	23	35	42	45	54
7/16	11.11	30	35	54	64	70	84
1/2	12.70	45	52	80	96	110	132
9/16	14.29	65	75	110	132	160	192
5/8	15.88	95	105	150	180	220	264
3/4	19.05	150	185	270	324	380	456
7/8	22.23	160	200	400	480	600	720
1	25.40	250	300	580	696	900	1080
1-1/8	25.58			800	880	1280	1440
1-1/4	31.75			1120	1240	1820	2000
1-3/8	34.93			1460	1680	2380	2720
1-1/2	38.10			1940	2200	3160	3560

\* Thick nuts must be used with Grade 8 bolts