



# ype Offset-WOF10

WHEN ORDERING PARTS,  
PLEASE SPECIFY  
TYPE, MODEL, SERIAL NO.

Re No.	Description	Model	WOF10	Model	WOF10	Model	WOF10	Model	WOF10	Model	WOF10	Model	WOF10	
		2422	2424	2622	2624	2822	2824	3022	3024	3222	3224	3622	3624	
		Part No.	No. Req.	Part No.	No. Req.	Part No.	No. Req.	Part No.	No. Req.	Part No.	No. Req.	Part No.	No. Req.	
22	Base Rockshaft Brg.	3426	2	3426	2	3426	2	3426	2	3426	2	3426	2	
23	Cap Rockshaft Brg.	3425	2	3425	2	3425	2	3425	2	3425	2	3425	2	
	Machine Bolt — 7/8" x 7" USS	10431	4	10431	4	10431	4	10431	4	10431	4	10431	4	
	Lock Washer — 7/8"	10035	4	10035	4	10035	4	10035	4	10035	4	10035	4	
	Nut — Hex — 7/8" USS	10148	4	10148	4	10148	4	10148	4	10148	4	10148	4	
	Wheel Support	1475	4	1475	4	1475	4	1475	4	1475	4	1475	4	
	Machine Bolt — 1" x 3" USS	11025	8	11025	8	11025	8	11025	8	11025	8	11025	8	
	Lock Washer — 1"	11027	8	11027	8	11027	8	11027	8	11027	8	11027	8	
	Nut — Hex — 1" USS	11026	8	11026	8	11026	8	11026	8	11026	8	11026	8	
24	Transport Bar	1443	1	1443	1	1443	1	1443	1	1443	1	1443	1	
	Rivet (Drilled) 3/4" x 2 1/2"	10019	1	10019	1	10019	1	10019	1	10019	1	10019	1	
	Rivet (Drilled) 3/4" x 3"	10052	1	10052	1	10052	1	10052	1	10052	1	10052	1	
	Cotter Pin — 1/4" x 1 1/2"	10075	2	10075	2	10075	2	10075	2	10075	2	10075	2	
25	Bearing Housing — Front Half	6405	8	6405	8	6405	8	6405	8	6405	8	6405	12	
26	Bearing Housing — Rear Half	6406	8	6406	8	6406	8	6406	8	6406	8	6406	12	
	Carriage Bolt — 3/4" x 3"	10579	16	10579	16	10579	16	10579	16	10579	16	10579	24	
	Lock Washer — 3/4"	10002	16	10002	16	10002	16	10002	16	10002	16	10002	24	
	Nut — Hex — 3/4" SAE	10585	16	10585	16	10585	16	10585	16	10585	16	10585	24	
27	Hub W/2 Cups & 5 Lug Bolts	10581	4	10581	4	10581	4	10581	4	10581	4	10581	4	
28	Cup Inner (Timken — LM 48510)	10352	4	10352	4	10352	4	10352	4	10352	4	10352	4	
29	Cone Inner (Timken — LM 48548)	10353	4	10353	4	10353	4	10353	4	10353	4	10353	4	
30	Grease Seal — AFS 2130	10582	4	10582	4	10582	4	10582	4	10582	4	10582	4	
31	Hub Bolt	10354	20	10354	20	10354	20	10354	20	10354	20	10354	20	
32	Nut — Hub (FS 8320)	11046	20	11046	20	11046	20	11046	20	11046	20	11046	20	
33	Cup — Outer (LM 67010)	10293	4	10293	4	10293	4	10293	4	10293	4	10293	4	
34	Cone — Outer (LM 67048)	10295	4	10295	4	10295	4	10295	4	10295	4	10295	4	
35	Spindle Washer	10263	4	10263	4	10263	4	10263	4	10263	4	10263	4	
36	Spindle Nut — 7/8" SAE (Slotted)	10264	4	10264	4	10264	4	10264	4	10264	4	10264	4	
37	Cotter Pin — 3/16" x 1 1/2"	10027	4	10027	4	10027	4	10027	4	10027	4	10027	4	
38	Hub Cap	10356	4	10356	4	10356	4	10356	4	10356	4	10356	4	
39	Grease Fitting — Straight	10606	4	10606	4	10606	4	10606	4	10606	4	10606	4	
40	Gang Bolt	5644	4	5644	2	5623	4	5623	2	5624	4	5644	6	
	Gang Bolt			5623	2			5624	2					
41	Bumper Washer	2386	4	2386	4	2386	4	2386	4	2386	4	2386	6	
42	Blade — 24" Cut Out	3250	24	3250	26	3250	28	3250	30	3250	32	3250	36	
42A	Blade — 16" Back-Up	3055	24	3055	26	3055	28	3055	30	3055	32	3055	36	
43	End Bell — Small	6400	8	6400	8	6400	8	6400	8	6400	8	6400	12	
44	Housing Bearing	G6404	8	G6404	8	G6404	8	G6404	8	G6404	8	G6404	12	
45	Bearing — Anti-Friction (GW214PP2)	G10218	8	G10218	8	G10218	8	G10218	8	G10218	8	G10218	12	
46	Ring Retainer	11072	8	11072	8	11072	8	11072	8	11072	8	11072	12	
47	End Bell Large	6401	8	6401	8	6401	8	6401	8	6401	8	6401	12	
48	Spacer Spool (Fabricated)	545	12	545	14	545	16	545	18	545	20	545	18	
	End Gang Washer	1222	4	1222	4	1222	4	1222	4	1222	4	1222	6	
	Lock Plate — Nut	5622	4	5622	4	5622	4	5622	4	5622	4	5622	6	
49	Nut — Gang Bolt	10489	4	10489	4	10489	4	10489	4	10489	4	10489	6	
	Carr. Bolt 7/16" x 1 1/2"	10068	8	10068	8	10068	8	10068	8	10068	8	10068	12	
	Lock Washer — 7/16"	10619	8	10619	8	10619	8	10619	8	10619	8	10619	12	
	Nut — Hex — 7/16"	10618	8	10618	8	10618	8	10618	8	10618	8	10618	12	
	— OPTIONAL PARTS —													
	Wheel — 15 x 5 — KDC — 5-Hole	10025	4	10025	4	10025	4	10025	4	10025	4	10025	4	
	Tire — 6:70 x 15 — 4-Ply — Imp.	11041	4	11041	4	11041	4	11041	4	11041	4	11041	4	
	Tube — 6:70 x 15	11040	4	11040	4	11040	4	11040	4	11040	4	11040	4	
	Wheel — Rim — Inner — 4:00 x 9	11009	4	11009	4	11009	4	11009	4	11009	4	11009	4	
	Wheel — Rim — Outer — 4:00 x 9	11010	4	11010	4	11010	4	11010	4	11010	4	11010	4	
	Tire — 6:00 x 9 — Pneumatic	11011	4	11011	4	11011	4	11011	4	11011	4	11011	4	
	Tire — 6:00 x 9 — Laminated	10302	4	10302	4	10302	4	10302	4	10302	4	10302	4	
	Tube — 6:00 x 9	11012	4	11012	4	11012	4	11012	4	11012	4	11012	4	

## ALEXANDER MANUFACTURING COMPANY

NO. 1 AMCO DRIVE

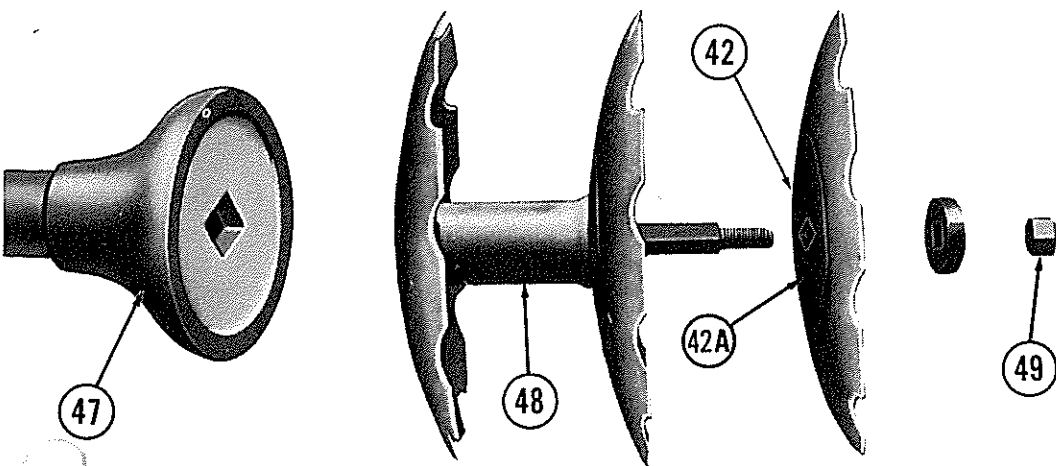
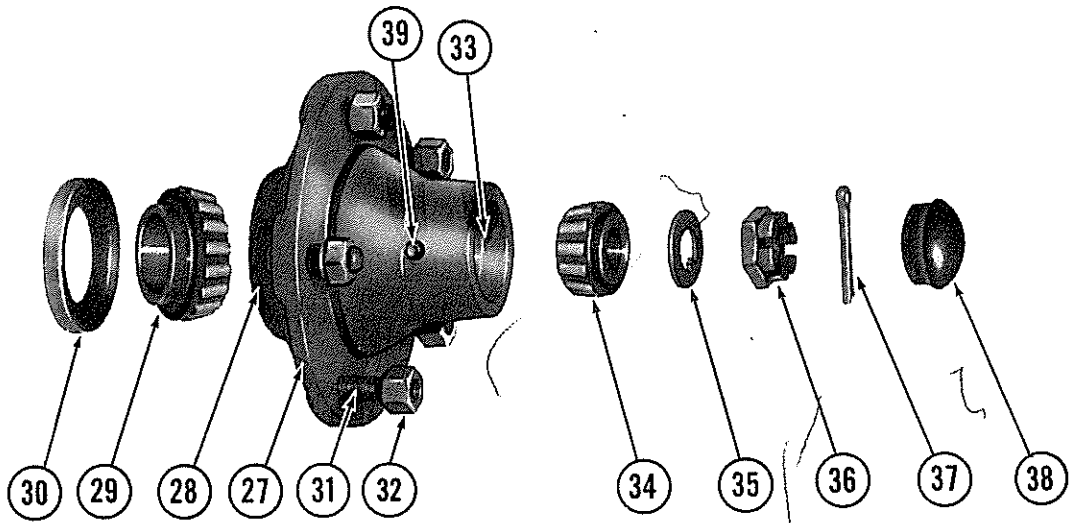
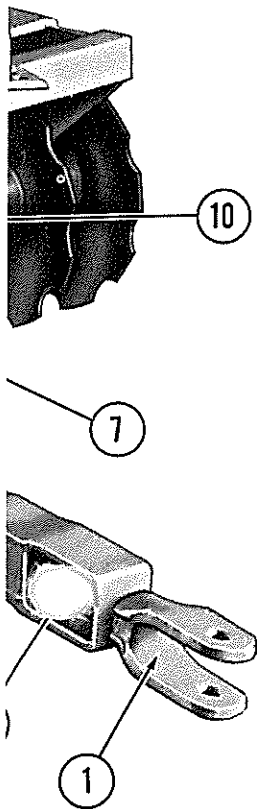
PHONE (601) 746-4464

YAZOO CITY, MISSISSIPPI 39194

# Wheel Type Offset- WOF10

WOF12

WHEN ORDERING PARTS,  
PLEASE SPECIFY  
TYPE, MODEL, SERIAL NO.



# PARTS LIST



# Rigid Fram

