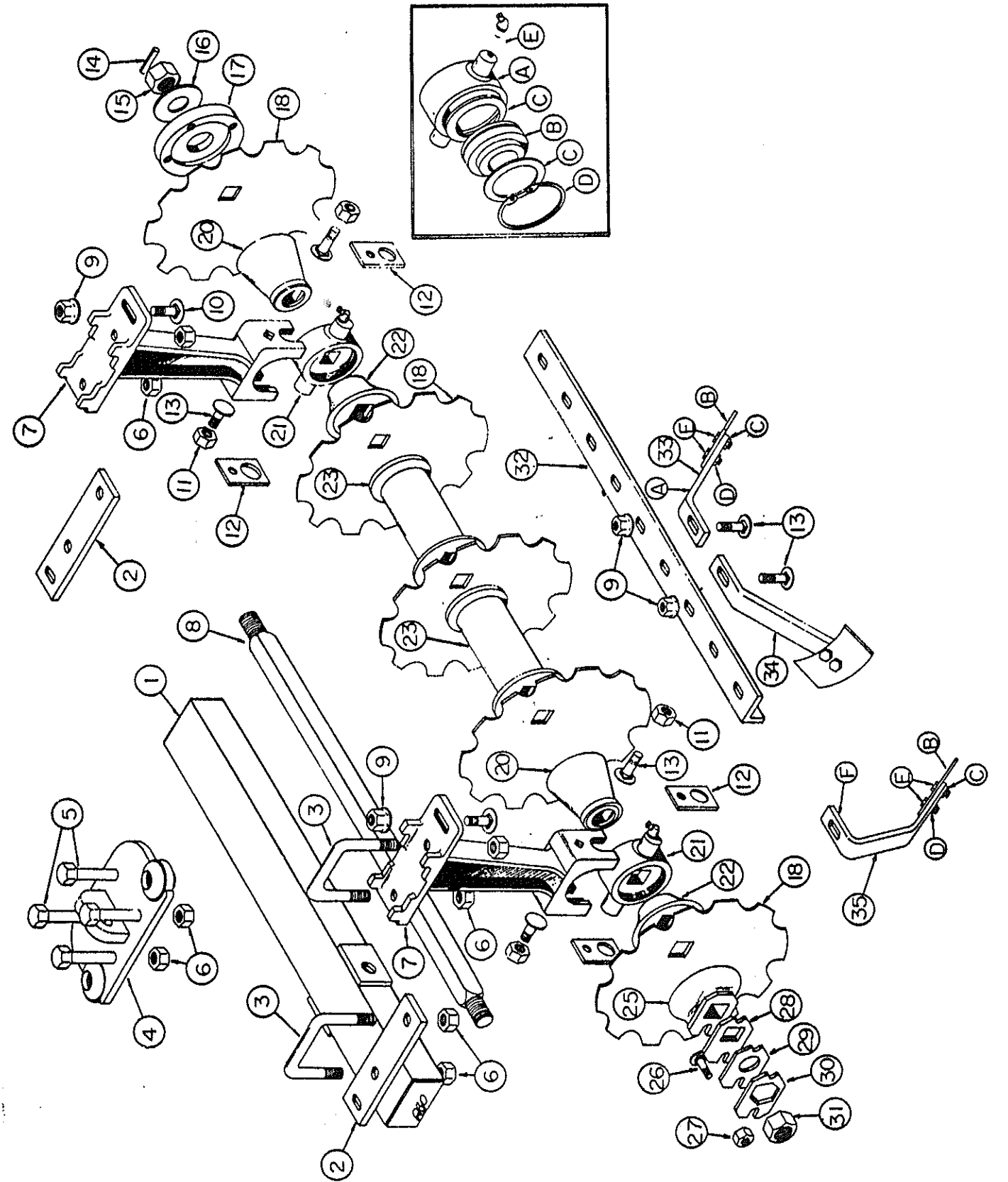


I N S E R T

PARTS LIST FOR LJ6-12 BLADE LEVEE PLOW

# LJ6 [12 BLADE] GANGS & FRAMES



# AMCO LEVEE FLOW LJ6 [12 BLADE] GANGS & FRAMES

(2)

Ref. No.	Part No.	Description	No. Req'd
1	20156	Assy. Gang Frame- 3 X 5 X 42" .....	1
2	101336	Scraper Bar Support .....	2
3	11280	"U" Bolt 7/8 Dia. ....	2
4	20163	Assy. Rear Mount .....	1
5	10591	Hex Head Machine Bolt 7/8 X 6 NC, PL, GR5 .....	4
6	10396	Lock Nut 7/8 NC, PL .....	8
7	16012A	Bearing Riser (PP) .....	2
8	9451	Gang Bolt 1-1/2" Sq. 60-1/4" 6 Blade .....	1
9	11647	Flange Lock Nut 5/8 NC, PL .....	9
10	10722	Carriage Bolt 5/8 X 2-1/2 NC, PL, GR5 .....	2
11	10299	Lock Nut 5/8 NC, PL .....	4
12	9628	Clamp Trunnion .....	4
13	10135	Carriage Bolt 5/8 X 1 3/4 NC, PL, GR5 .....	11
14	11659	Steel Roll Pin (Grooved) 5/16 X 2 1/2 .....	1
15	9577A	Nut Gang Bolt PP Cast Steel .....	1
17	9578A	Bumper Washer .....	1
18	3255	Blade 24 X 1/4 Plain .. 3263 - 26"	1
18	3276	Blade 22 X 1/4 Plain .. 3255 - 24"	1
18	11588	Blade 20 X 1/4 Plain .. 3276 - 22"	1
18	9482	Blade 18" X 3/16 Plain .. 11588 - 20"	1
18	3055	Blade 16" 7 Ga. Plain .. 9482 - 18"	1
18	3266	Blade 14" 7 Ga. Plain .. 3055 - 16"	1
19	3278	10" X 11 Ga. Plain-Back-up .....	3
20	17007	End Bell - Small .....	2
21	FB-09-0015	Sub. Assy. Bearing and Housing .....	2
A	16003	Housing - Bearing .....	1
B	11503	Bearing 100mm GW211PP-SPL .....	1
C	11064	Snap Ring .....	1
D	100104	Washer 100 mm .....	2
E	10011	Grease Fitting 1/8 NPT W/90° Offset .....	1
22	17006	End Bell - Large .....	2
23	0523	Spacer Spool .....	3
25	1222A	End Gang Washer .....	1
26	10710	Carriage Bolt 1/2 X 2 NC, PL .....	1
27	10395	Lock Nut 1/2 NC, PL .....	1
28	100099	Spacer Plate .....	1
29	100098	Bearing Plate .....	1
30	5622A	Lock Plate .....	1
31	10489	Nut Gang Bolt, 1 1/2 NF .....	1
32	102511	Scraper Bar 3 X 2 X 3/8 Angle - 64-9/32 .....	1
33	20068	Assy. Scraper R.H. ....	5
34	20069	Assy. Scraper L.H. ....	5
A	101049	Scraper Shank .....	1
B	101019	Scraper Blade .....	1
C	10832	Cut Washer 1/2 PL .....	2
D	10395	Lock Nut 1/2 NC, PL .....	2
E	11652	Machine Bolt 1/2 X 1 1/4 NC(PLT) .....	2
35	20112	Assy. Scraper (Special) R.H. ....	1
36	20113	Assy. Scraper (Special) L.H. ....	1
F	101173	Scraper Shank .....	1