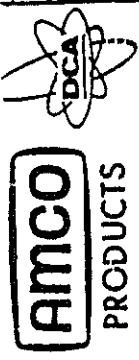


X OPERATIONS	Y OPERATIONS	Z OPERATIONS
SAW	DIE GREASE	REAM HOLE
SHEAR	CUT ANGLE	HEAT TREAT
PUNCH HOLE	NOTCH OR COPE	STRAIGHTEN
FORM	CENTER PUNCH	MACHINE
THREAD	M.T. STRIP	TACK WELD
FORGE	M.T. PIECE (G-1)	WELD
BURN CHAMFER	H.T. W template	PROG. DIE
DRILL	MACHINE GRIND	
CLEAN	PORTABLE GRIND	
SWAGE	TUMBLE	
TAPP	DRILL LEAD HOLE	



Portable Elevator Division
Dynamics Corp. of America
Yazoo City, Miss. 39194

Rev. (A) WAS 3/16 DIA 2/6/81

CUTTER PLATE	100654
REQ'D	MATERIAL
1	1/2 HRMS PL 1/6 DIA.
MODEL PD10-18	ASSEMBLY NO. 0938
DR. BY: HET	DATE
Rev.	Rev.
Rev.	Rev.
Rev.	Rev.
Rev.	Rev.

60 pieces per 12 x 240 plate

2-21-77

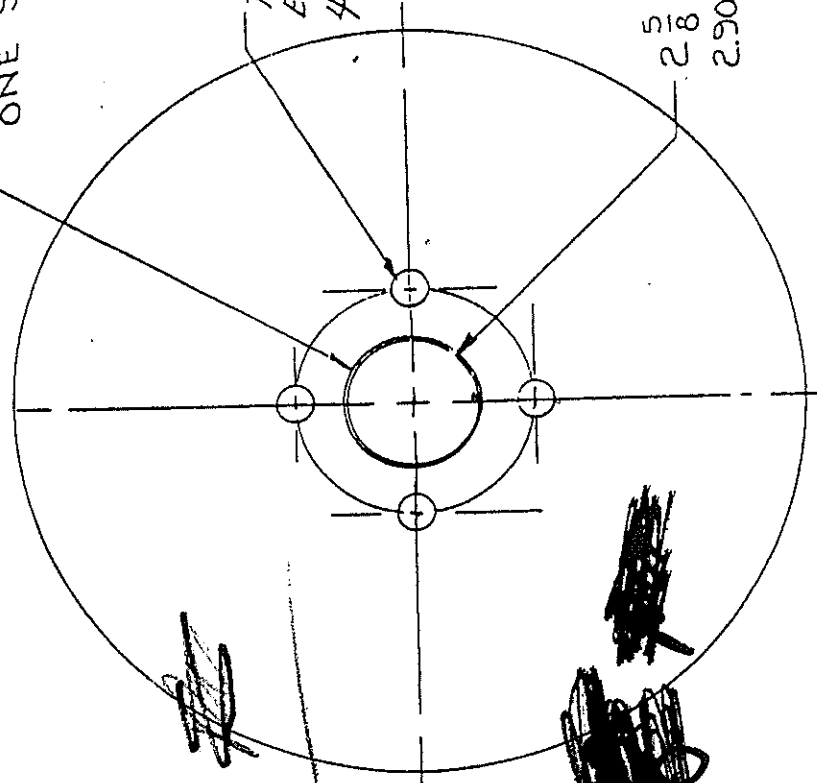
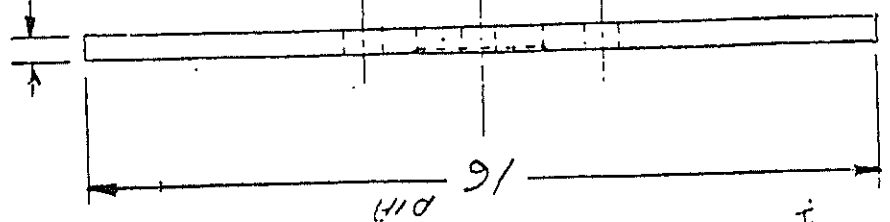
23.3916

1/2

1/52 x 1/32 CHAMFER
ONE SIDE ONLY

11/16 DRILL - 4
EQ. SPACED
4 3/4" B.C.

2 5/8 DIA. BURN
2.900 ± .005 MACH.



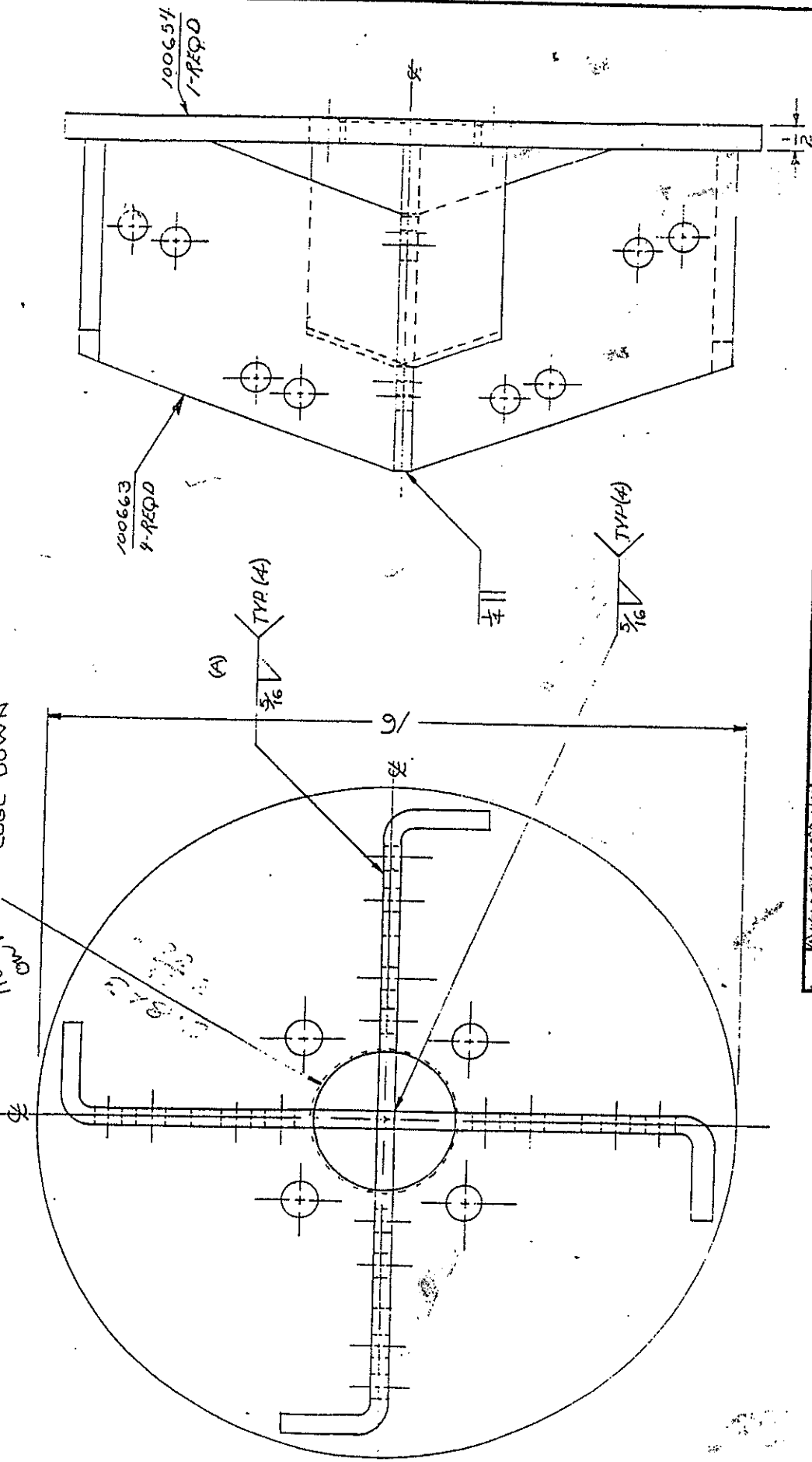
P.O #

~~XXXXXXXXXX~~

Z

MASTER COPY

TURN CHAMFERED
EDGE DOWN
1/16 Chamfer
0.0625



REV.	(A) WELD SYM ADDED 4/85	DWG. NO.	0938	MATERIAL	WELDMENT	Amco Division Dynamics Corporation of America Yazoo City, Mississippi 39194
REV.		DRAWN BY	H/E J	SCALE		PART NAME
REV.		DATE	2-28-77	APPROV BY	PD5-18, PD10-18	ASSY CUTTER H/PD