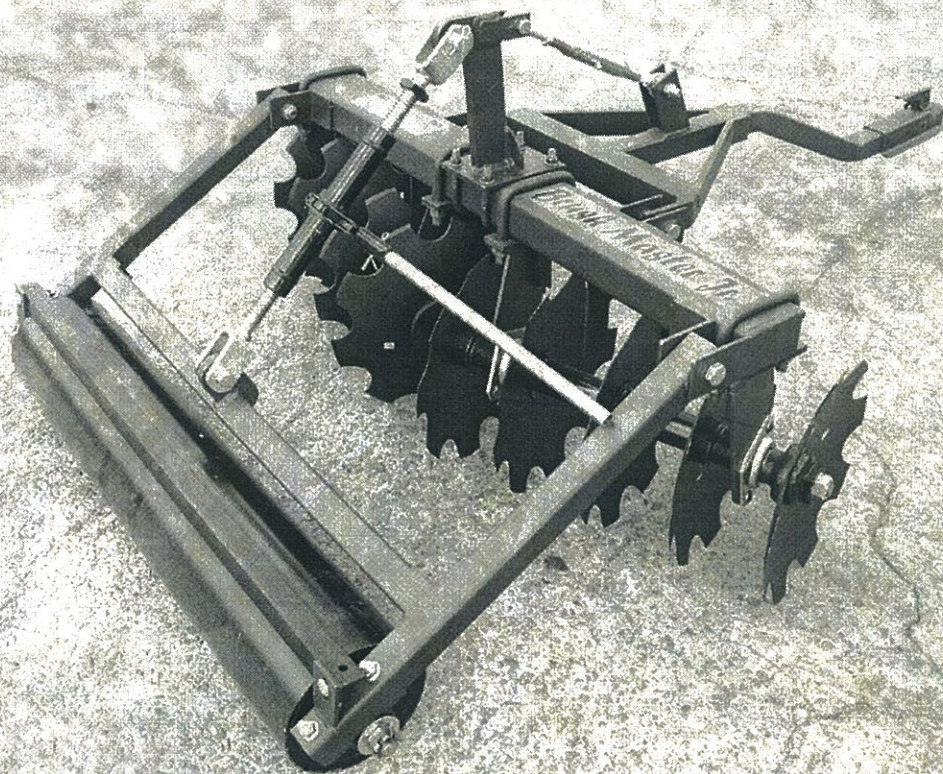


WILDLIFE SPECIALITY, INC.

PARTS CATALOG

OPERATION * MAINTENANCE * SET-UP

BRUSHMASTER, JR SERIES DISK HARROW



WILDLIFE SPECIALITY, INC.

800 S. Industrial Parkway * P.O. Box 1107 * Yazoo City, Mississippi 39194

(662) 746-4464 Wats No. 800-748-9022 www.amcomfg.com/brushmaster.html

TO THE PURCHASER

The care you give your new *Brushmaster* will greatly determine the satisfaction and service life you will obtain from it. By observing the instructions and suggestions in this manual, your *Brushmaster* will serve you well for many years. Please furnish this manual to new owners when the *Brushmaster* is sold.

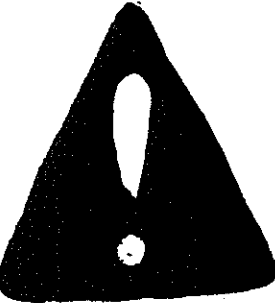
As an Authorized Wildlife Speciality Dealer, we stock Genuine *Brushmaster* Parts, which are manufactured with the same precision and skill as the original equipment. For best performance and longer life use only Genuine *Brushmaster* replacement parts. Our factory-trained staff is kept fully informed of the most efficient methods of servicing *Brushmaster* equipment and is ready and able to assist you.

When you sell your *Brushmaster* Harrow you should pass this manual to the new owner.

If you should require additional aid or information, please contact us.

YOUR AUTHORIZED *Brushmaster* DEALER

OSHA requires that as a farm employer you meet certain safety requirements. Become familiar with and comply with those requirements. Be sure anyone who operates this equipment understands all safety related items. If this harrow is repainted, be certain new decals are ordered. Decals pertaining to personal safety must be replaced.



Look for this symbol to point out important safety precautions. It means -- ATTENTION! Become alert! Your safety is involved.

To insure efficient and prompt service, please provide the model number and serial number of your *Brushmaster* Harrow in all correspondence or contacts. Remember, the right and left hand sides of the harrow are determined by standing at the rear of the harrow and facing the direction of travel.



MODEL NUMBER

SERIAL NUMBER

TABLE OF CONTENTS

	Page No.
To the Purchaser.	i
Description	3-4
Operation, Transport, Depth Control	3
Pull Tongue	5-6
Main Frame and Lift Bracket	7-8
Gang Assembly	9-10
Culti-Packer Roller	11-12
Culti-Packer Frame	13-14
Disk Blade Failure	17-18
General Torque Specifications Table	19

OPERATION INSTRUCTION

The **BrushMaster Jr** is a bush and bog design. This disc produces a level bed by discing ½ of the previous pass and ½ new ground. The tongue adjusting rod can be screwed in or out to level the disc. The disc produces a level bed best by leveling the disc at the desired depth that you will operate. If the disk is tilted forward the outer blades will cut deeper. The dirt profile will form a , or ditch, after multiple passes through the same path. If the disk is tilted back, the center blades will cut deeper. The dirt profile will form a , or hill, after multiple passes through the same path. The cultipacker is for seed bed preparation, depth control and transport.

TRANSPORT

Extend ratchet jack to raise disc blades off the ground during transport. You will have to fully extend ratchet jack to clear loading ramps on trailers.



CAUTION: Dragging the disk over metal loading ramps will damage the ramp and/or your **BrushMaster Jr**.

DEPTH CONTROL

The ratchet jack can be adjusted so that you are barely cutting, such as in trail making and light discing on plowed ground. You can also disk at any depth, to totally lifting the cultipacker off the ground which puts the entire weight of the complete assembly on the disc blades for hard ground applications. Pull the disc at a speed that does not produce instability. This speed is 5 mph or less. You will find the correct speed for your type soil and disk depth best through varying your discing speed.

CULTIPACKER

After you have the ground prepared by discing and you have disced in all the fertilizer and lime, you are ready to pack the soil for seeds that require less than 1/4" depth. Rough disced ground will cover seeds more than 1/8" to 1/4". After sowing the proper amount of seed, put the cultipacker in transport and pull it over your field to insure good seed to soil contact. The best germination is obtained with the seed at the proper depth with the soil cultipacked to insure seed to soil contact.

NOTE: The right and left designations of parts are determined from standing behind the implement.

BrushMaster Jr

SERIES DISK HARROW

Pull Tongue

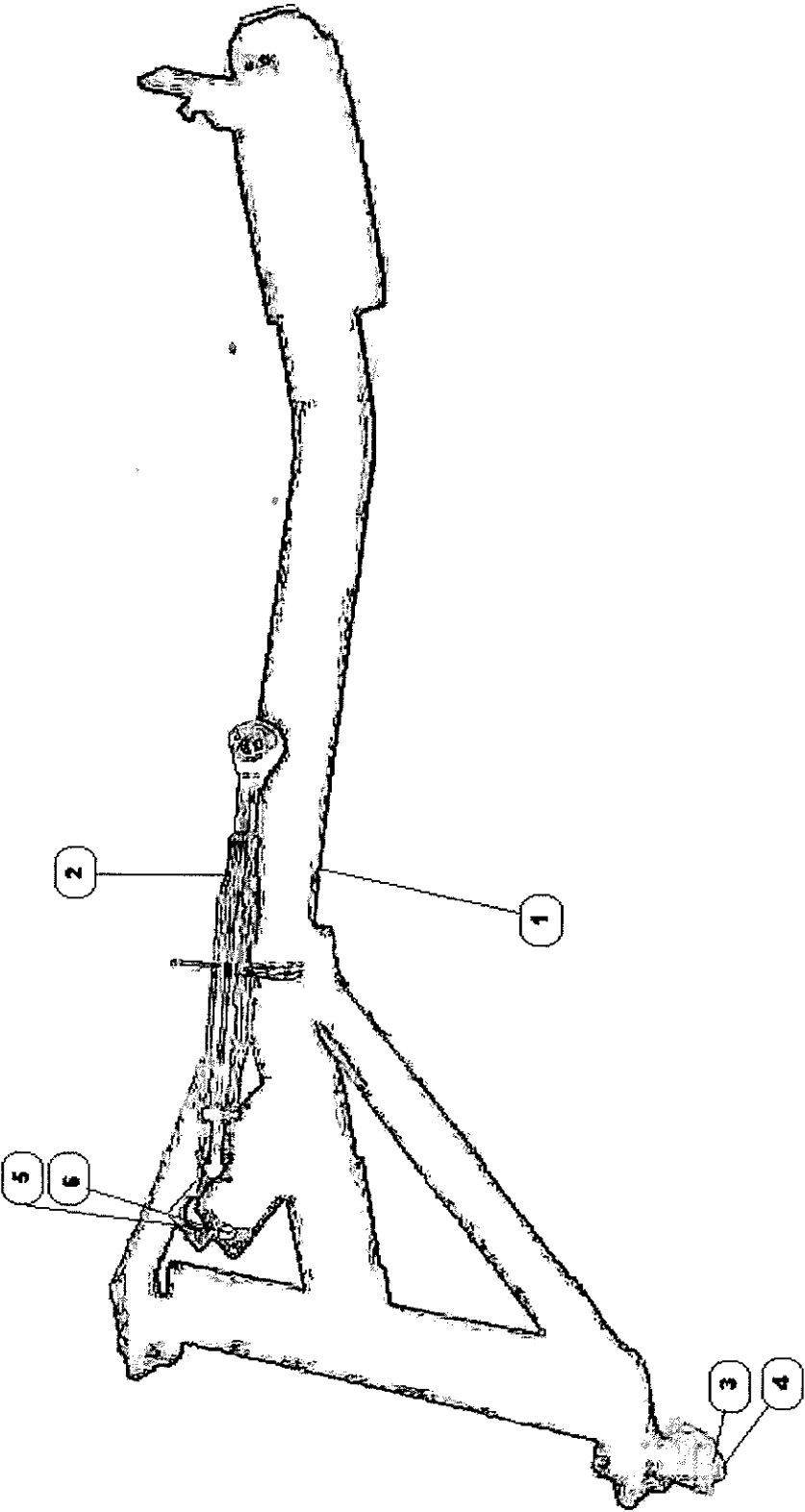
Ref. No.	Part No.	Description	No. Req'd
1	20628	Pull Tongue.....	1
2	12428	Tongue Adjusting Rod.....	1
3	10320	3/4" x 3-1/2" Hex Bolt NC, PLT, Gr. 5	2
4	10300	3/4" Lock Nut NC, PLT, Gr. B	2
5	10674	5/8" x 2-1/2" Hex Bolt NC, PLT, Gr. 8	1
6	10299	5/8" Lock Nut NC, PLT, Gr. B	1

D:\BRSHMAST\MANUALJR.WPD

BrushMaster Jr

SERIES DISK HARROW

Pull Tongue



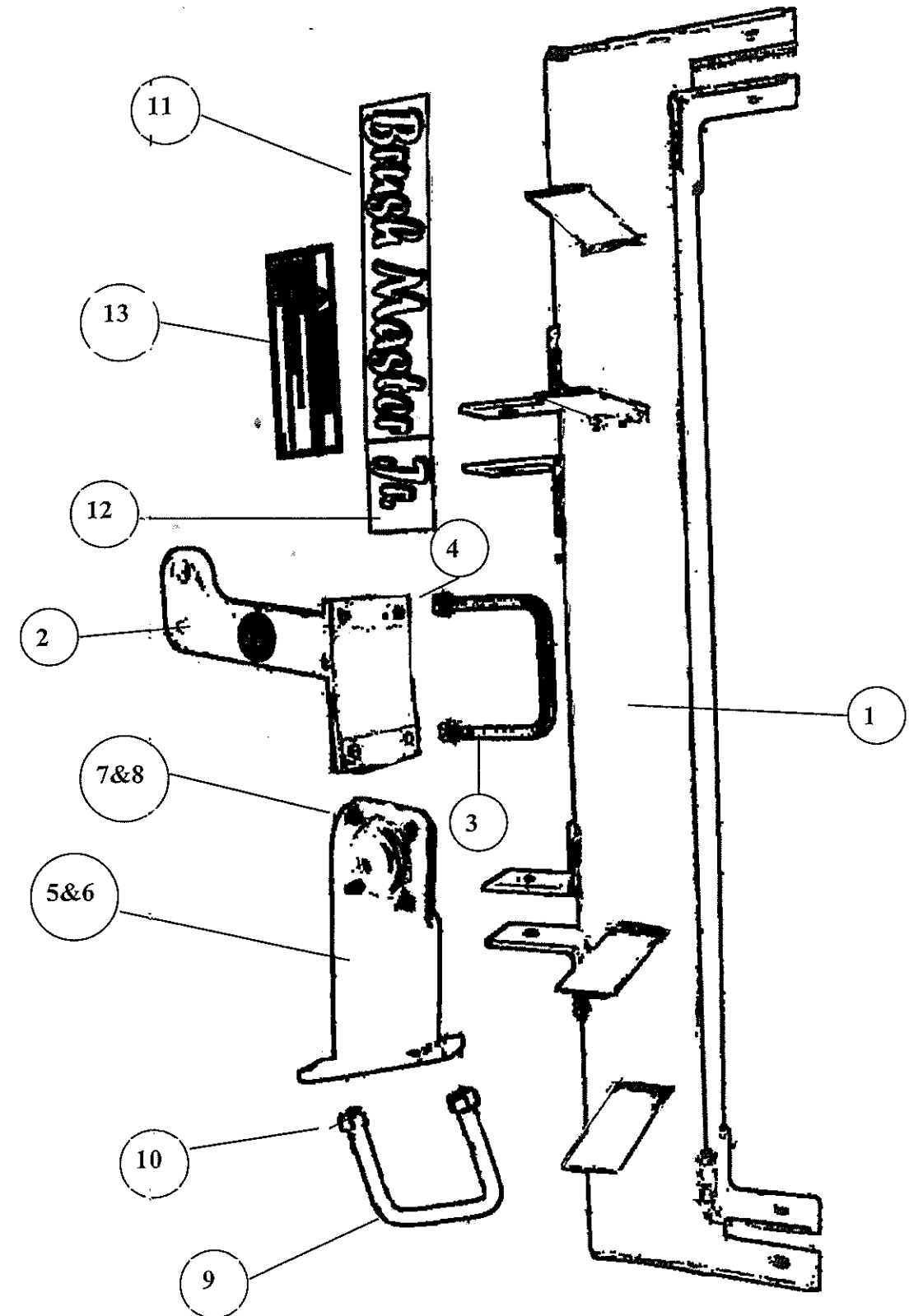
BrushMaster Jr

SERIES DISK HARROW

Main Frame and Lift Bracket

Ref. No.	Part No.	Description	No. Req'd
1	20627	Main Frame	1
2	20632	Lift Bracket	1
3	12427	U Bolt, 1/2" x 5-1/16"W x 4" Long	2
4	11646	1/2" Flange Lock Nut NC, PLT, Gr. G	4
5	20630	Bearing Riser, LH	2
6	20631	Bearing Riser, RH	2
7	10599	7/16" x 1 Carriage Bolt NC, PLT, Gr. 5	12
8	12432	7/16" Flange Lock Nut NC PLT	12
9	6513	U Bolt 3/4" x 5-1/2" W x 4-3/4" Long, PLT	4
10	10300	3/4" Lock Nut NC, PLT, Gr.B	8
11	12369	BrushMaster Decal	1
12	12419	Jr Decal	1
13	12418	Warning Decal	1

BrushMaster JR Main Frame




BrushMaster Jr

SERIES DISK HARROW

Gang Assembly

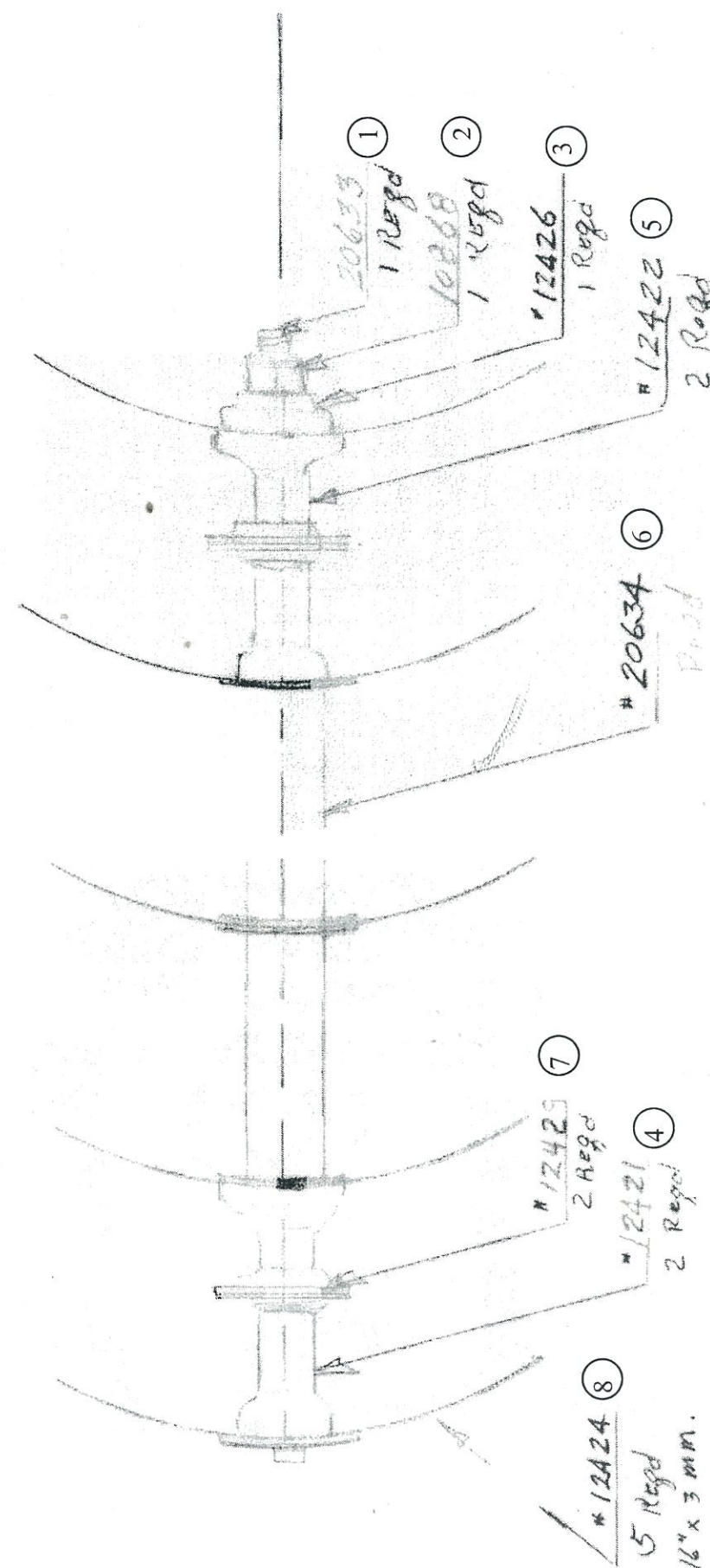
Ref. No.	Part No.	Description	No. Req'd
1	20633	Gang Bolt, 5 Bld., 1" Square.....	2
2	10868	Lock Nut 1" NC, PLT, Gr. B	2
3	12426	End Washer	2
4	12421	End Bell, Small	4
5	12422	End Bell, Large	4
6	20634	Spacer Spool, 6" Long	4
7	12429	Bearing Cartridge	4
8	12424	Blade, 16" Cut Out x 3mm.....	10

Note:

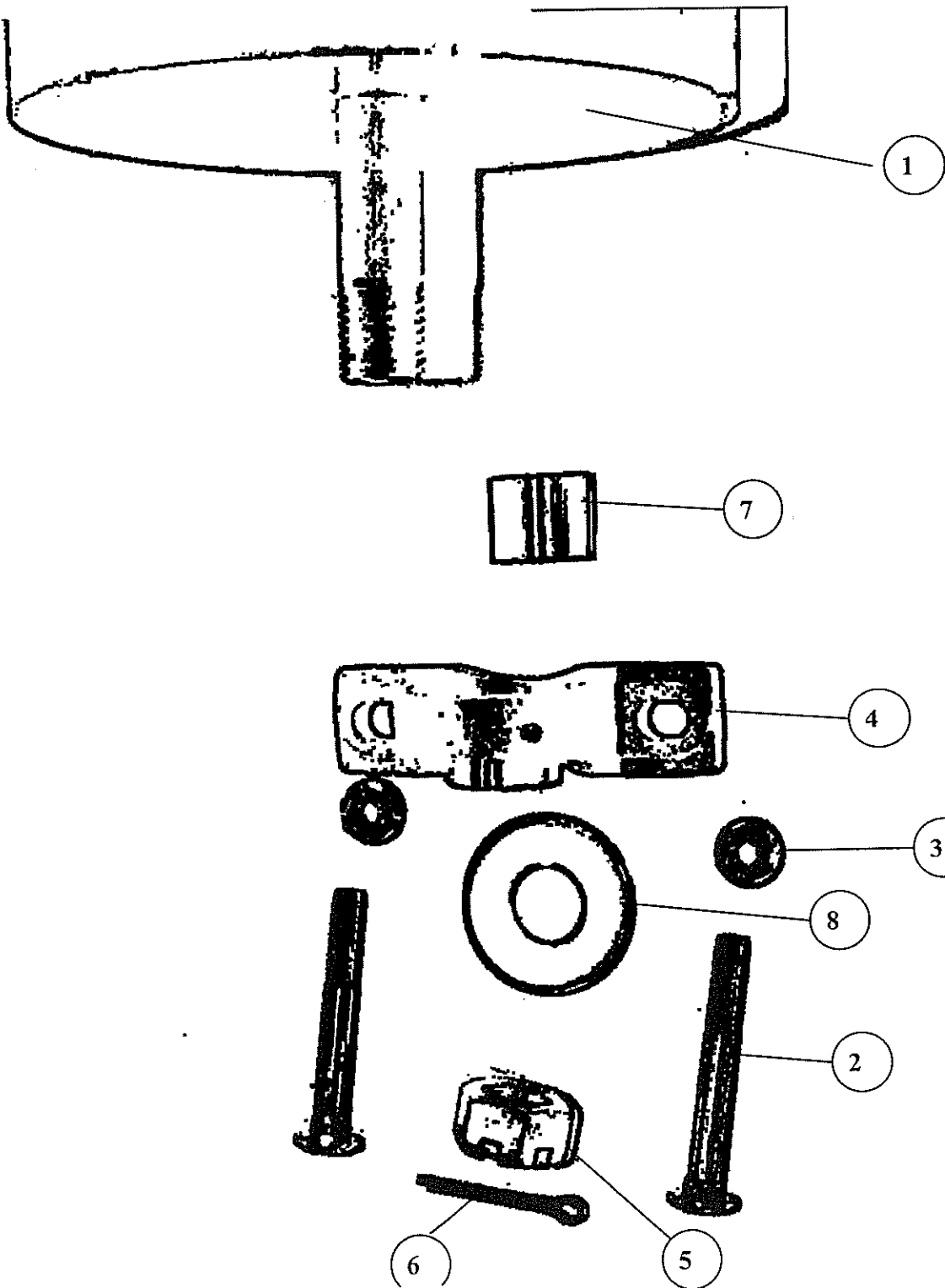
blade center hole in this position,  is the 90 degree configuration.

blade center hole in this position,  is the 45 degree configuration.

BrushMaster Jr



Brushmaster Jr



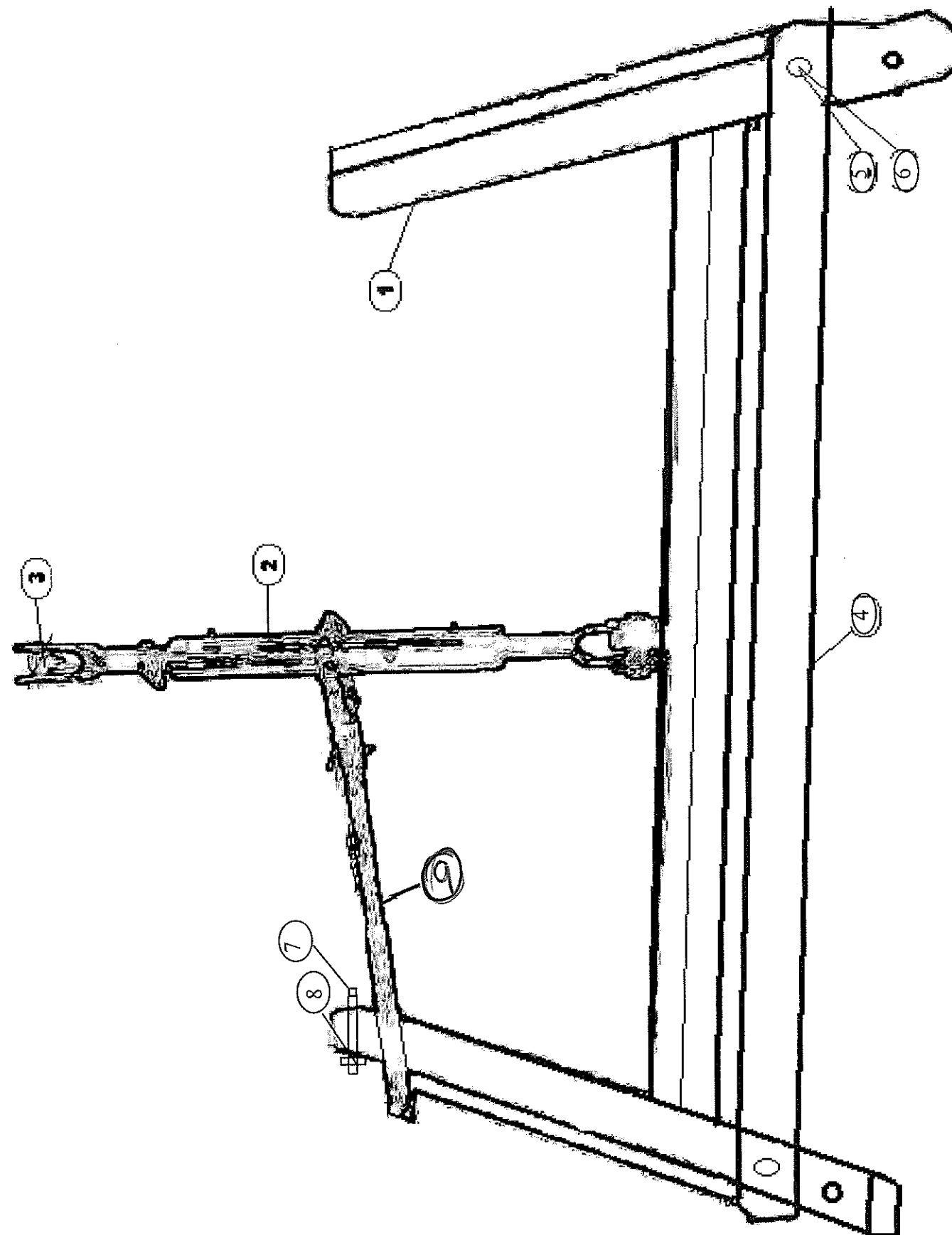
Brushmaster Jr

BrushMaster Jr

SERIES DISK HARROW

Culti-Packer Roller

Ref. No.	Part No.	Description	No. Req'd
1	20635	Culti-packer Roller	1
2	12433	7/16" x 3-1/2" Carr. Bolt NC, PLT, Gr. 5	4
3	12432	7/16" Flange Lock Nut NC PLT Gr. G	4
4	12430	1" Pillow Block Bearing	2
5	12431	1" Slotted Hex Nut	2
6	10075	1/4" x 1-1/2" Cotter Pin	2
7	102673	Bushing, 1" Std Pipe x 1-1/8" Long	2
8	10879	1" Cut Washer PLT	2

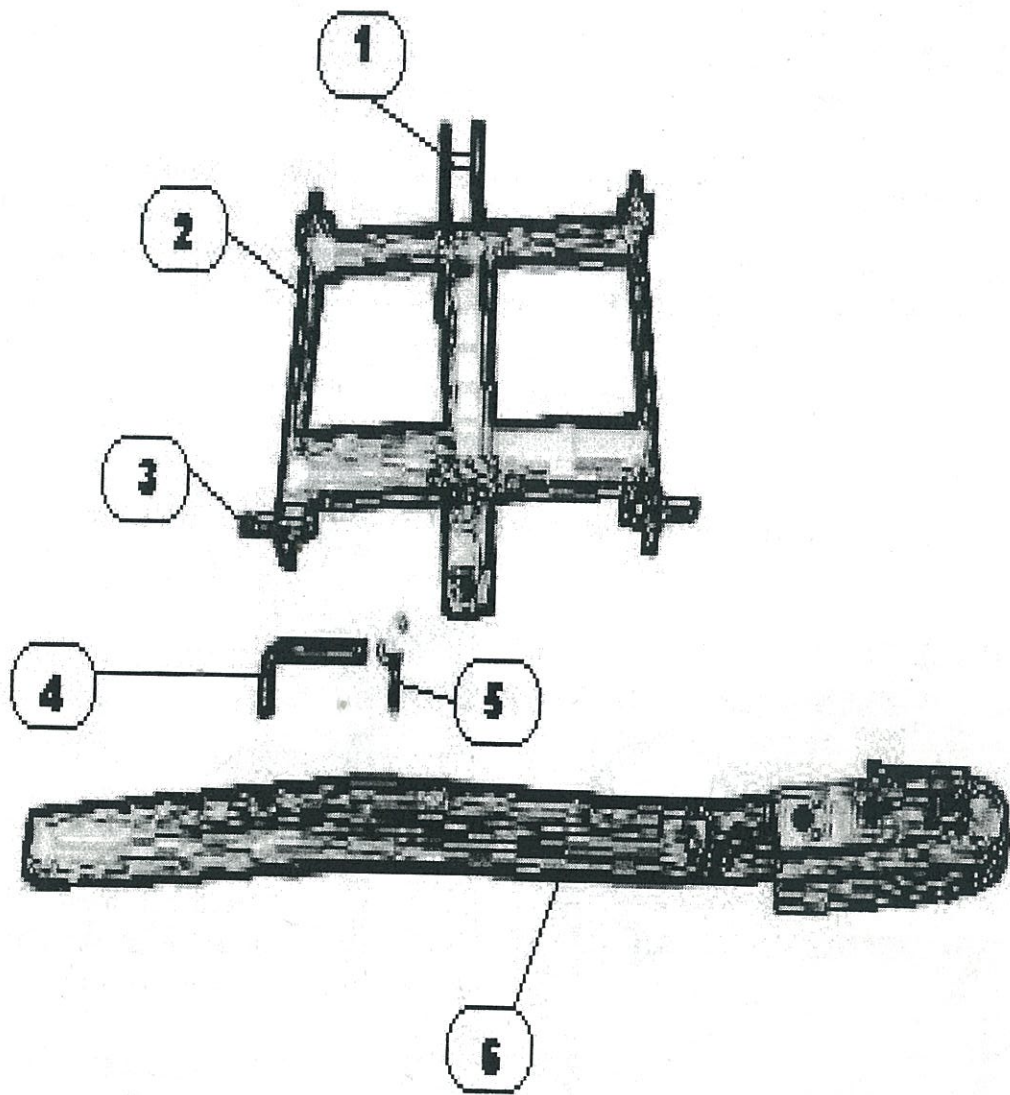


BrushMaster Jr

SERIES DISK HARROW

Culti-Packer Frame

Ref. No.	Part No.	Description No. Req'd
1	20629	Roller Frame	1
2	12494 12435	Ratchet Jack <i>W/ Handle + Pins</i>	1
3	11396	Pin Assembly 1" Dia. W/2 Hair Pin Clips	2
4	102664	Scraper, 1-1/2" x 1-1/2" x 1/8" Angle.....	1
5	10599	7/16" x 1" NC, PLT, Gr. 5 Carriage Bolt.....	2
6	12432	7/16" Flange Lock Nut NC, PLT, Gr. G.....	2
7	10320	3/4" x 2-1/2" Hex Bolt NC, PLT, Gr. 5	2
8	10300	3/4" Lock Nut NC, PLT, Gr. B	2
⑨	12434 - 20" Handle -		1



MOST OFTEN ENCOUNTERED DISK BLADE FAILURES

Most disk blade failures can be prevented by selecting the correct blade size and thickness for individual conditions when buying a disk. Reduction of speed in areas containing rocks and stumps will greatly lengthen the blade life. Keeping gang bolts properly torqued and raising the harrow while turning will also reduce disk blade breakage.

FIGURE 1 — Laminated Disc—defective steel. Eligible for warranty consideration.

SURFACE VIEW

EDGE VIEW

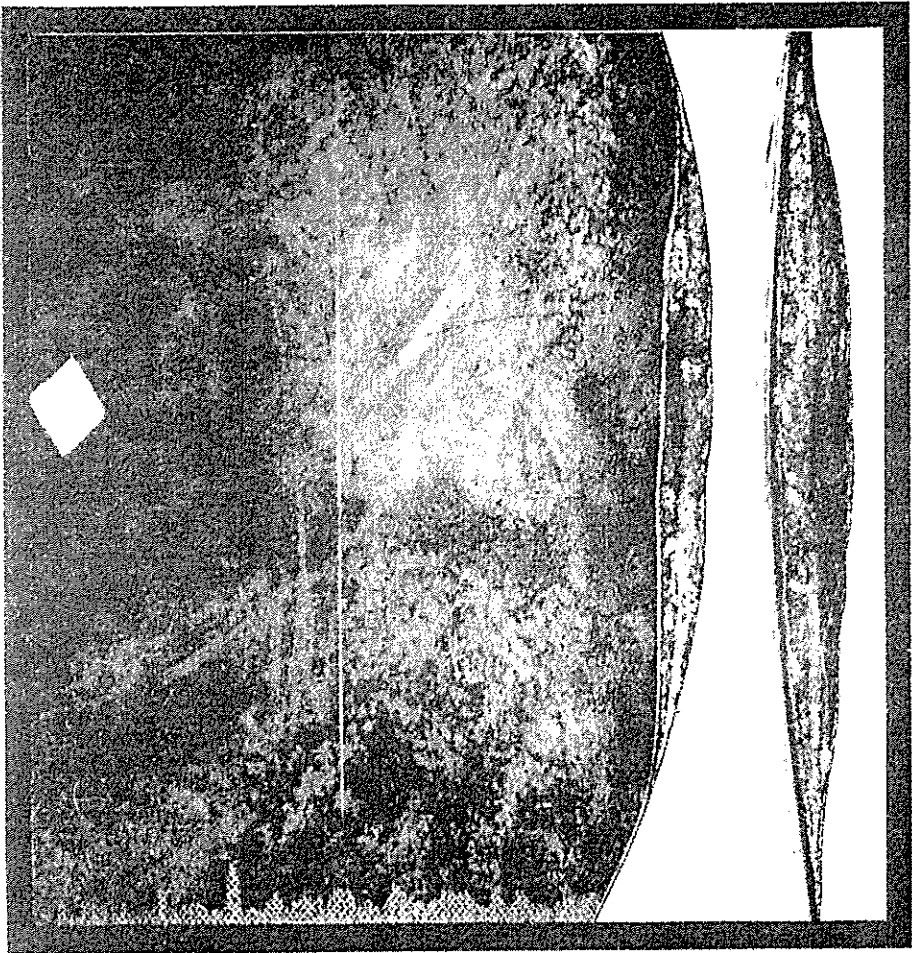


FIGURE 2 — Straight directional break caused by defective steel. Eligible for warranty consideration.

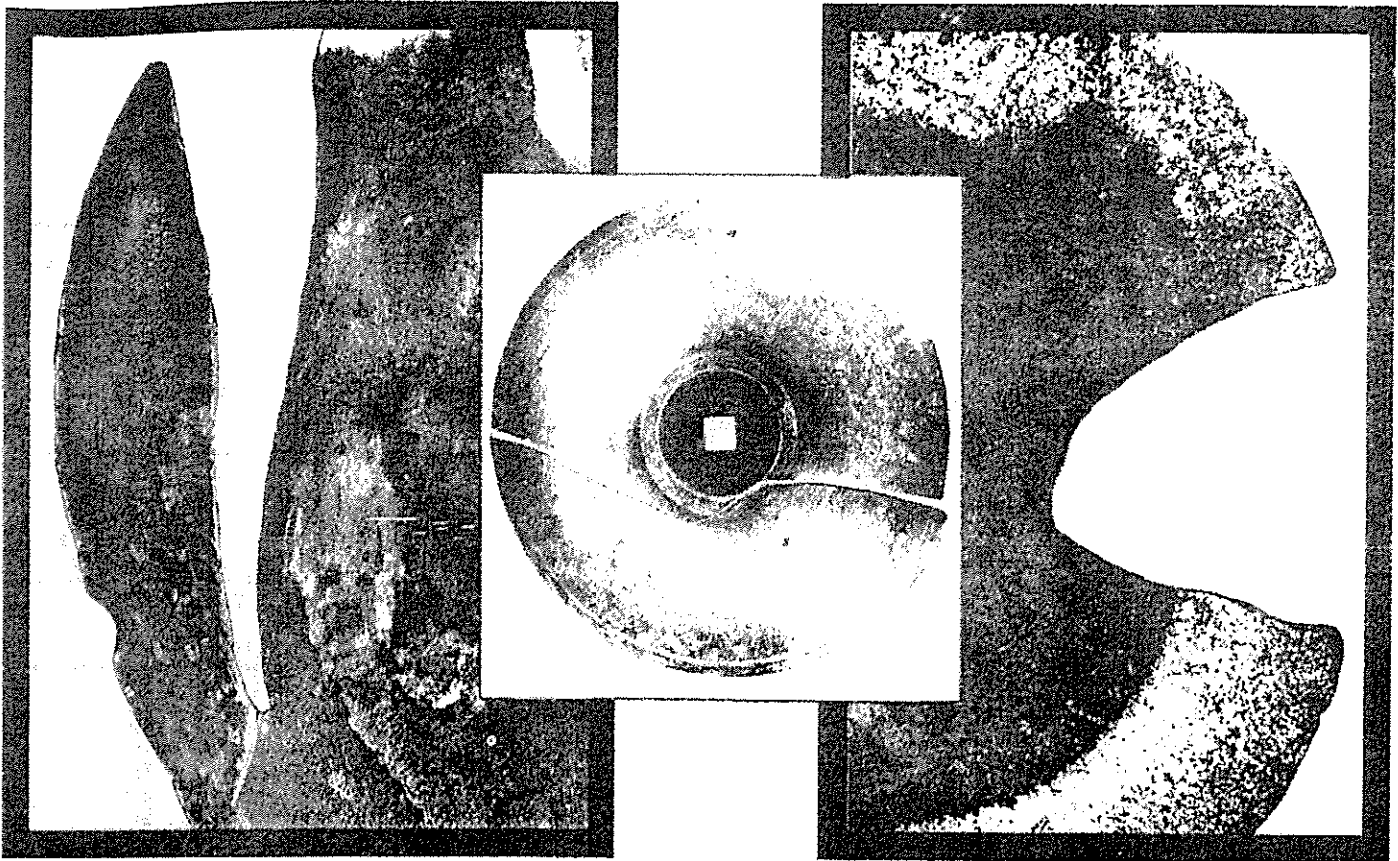
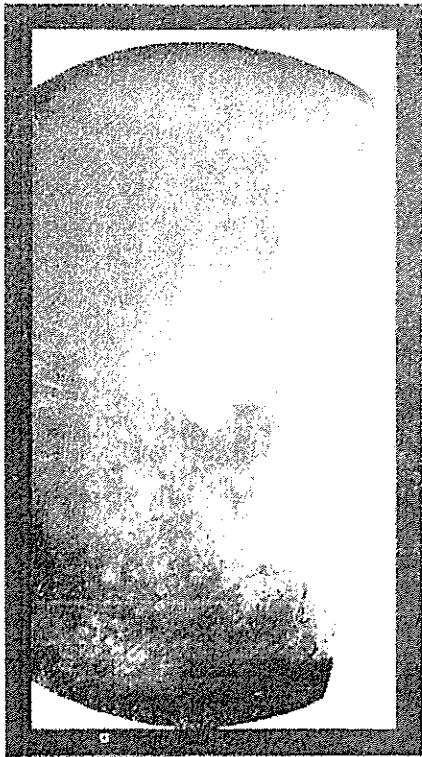


FIGURE 3, 4, 5 Irregular breaks caused by contact against rocks or stumps. Not covered by warranty.

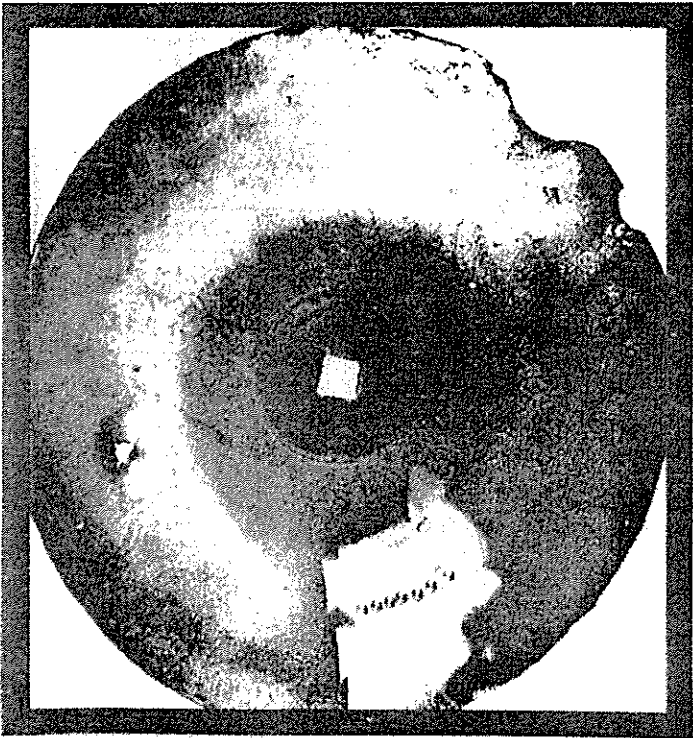


FIGURE 6 — Chipped or dented edges resulting from use in areas containing rocks or stumps. Not covered by warranty.










FIGURE 7 — Center broken out—Experience has shown that this is usually caused by loose bolts, excessive flexing, or by contact with rocks and stumps. Not covered by warranty.

GENERAL TORQUE SPECIFICATION TABLE (Revised 2-74)

USE THE FOLLOWING TORQUES WHEN SPECIAL TORQUES ARE NOT GIVEN

Note: These values apply to fasteners as received from supplier, dry, or when lubricated with normal engine oil. They do not apply if special graphited or moly-disulphide greases or other extreme pressure lubricants are used. This applies to both UNF and UNC threads.

SAE Grade No.		2	5	8 *
Bolt head identification marks as per grade NOTE: Manufacturing Marks Will Vary			  	  
		Torque	Torque	Torque
Bolt Size		Foot Pounds	Foot Pounds	Foot Pounds
Inches	Millimeters	Min Max	Min Max	Min Max
1/4	6.35	5 8	9 11	12 15
5/16	7.94	10 12	17 20 5	24 29
3/8	9.53	20 23	35 42	45 54
7/16	11.11	30 35	54 64	70 84
1/2	12.70	45 52	80 96	110 132
9/16	14.29	65 75	110 132	160 192
5/8	15.88	95 105	150 180	220 264
3/4	19.05	150 185	270 324	380 456
7/8	22.23	160 200	400 480	600 720
1	25.40	250 300	580 696	900 1080
1-1/8	25.58		800 880	1280 1440
1-1/4	31.75		1120 1240	1820 2000
1-3/8	34.93		1460 1680	2380 2720
1-1/2	38.10		1940 2200	3160 3560

* Thick nuts must be used with Grade 8 bolts

ALL BOLTS SHOULD BE TIGHTENED TO THE
RECOMMENDED TORQUES SHOWN IN THE
"GENERAL TORQUE SPECIFICATION TABLE"