

MODEL F12

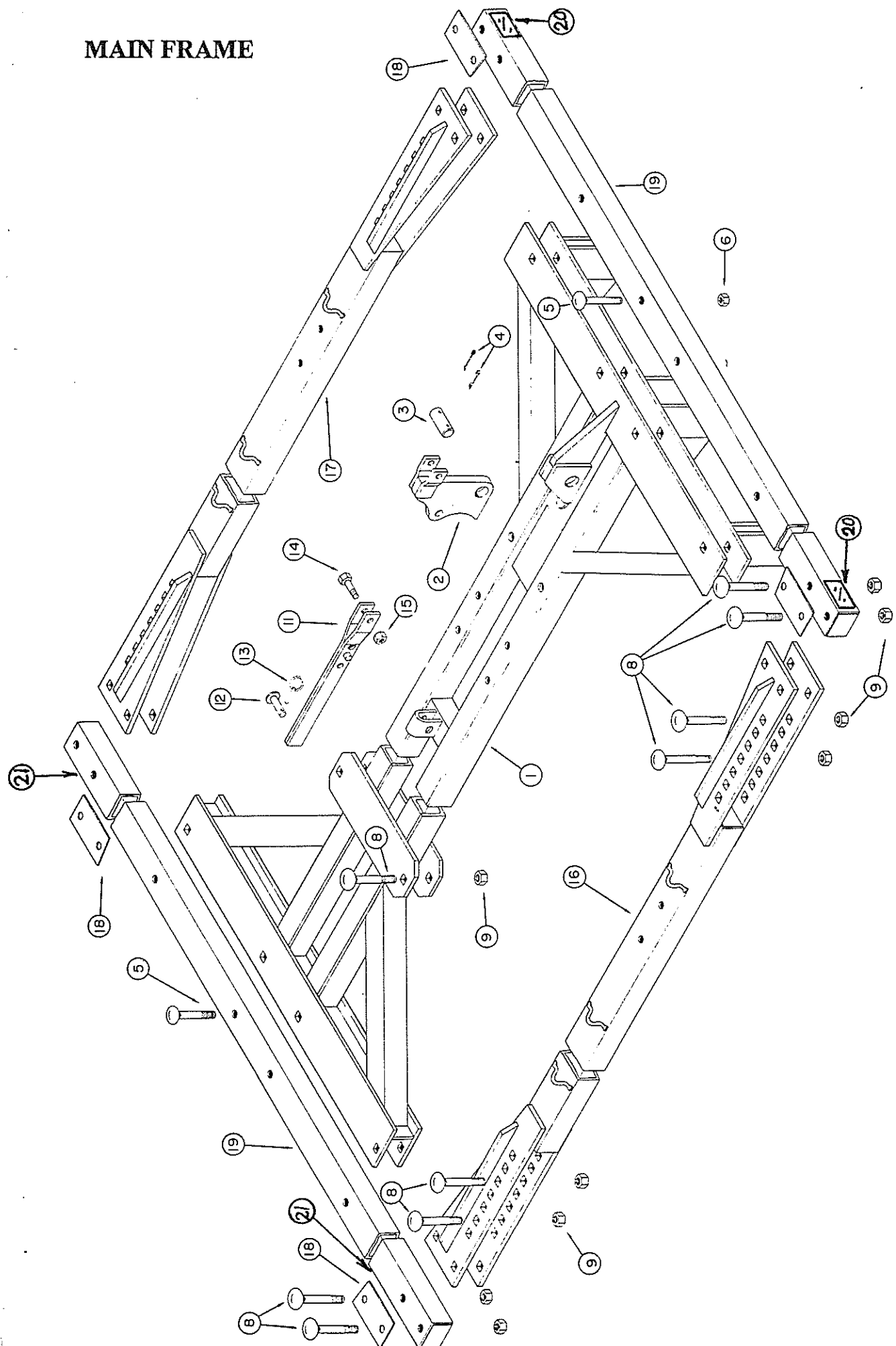
PARTS

LISTS

AMCO F12 SERIES DISK HARROW HITCH

Ref. No.	Part No.	Description	No. Req'd
1	16001	Clevis	1
4	20247	Assy. Clevis Pin.....	1
5	10910	Roll Pin.....	1
6	10300	Lock Nut - 3/4 NC,PL.....	2
7	0608B	Pull Tongue.....	1
8	5396	Pivot Pin.....	1
9	10373	Hex bolt 1 x 3 1/2 NC,PL.....	2
10	10868	Lock Nut 1 NC.....	2
11	10061	Hose Holder.....	1
12	10075	Cotter Pin 1/4 x 1 1/2.....	3
13	10320	Machine Bolt 3/4 x 3 1/2 NC,PL.....	2
14	1166	Cap.....	1
15	10460	Spring.....	2
16	1167	Piston Rod.....	1
17	1479	Spring Housing.....	1
19	5403	Rod-Stud Threaded.....	1
20	11081	Grease Fitting.....	1
21	11261	Jack.....	1
22	100134	Gang Bolt Wrench.....	1

MAIN FRAME



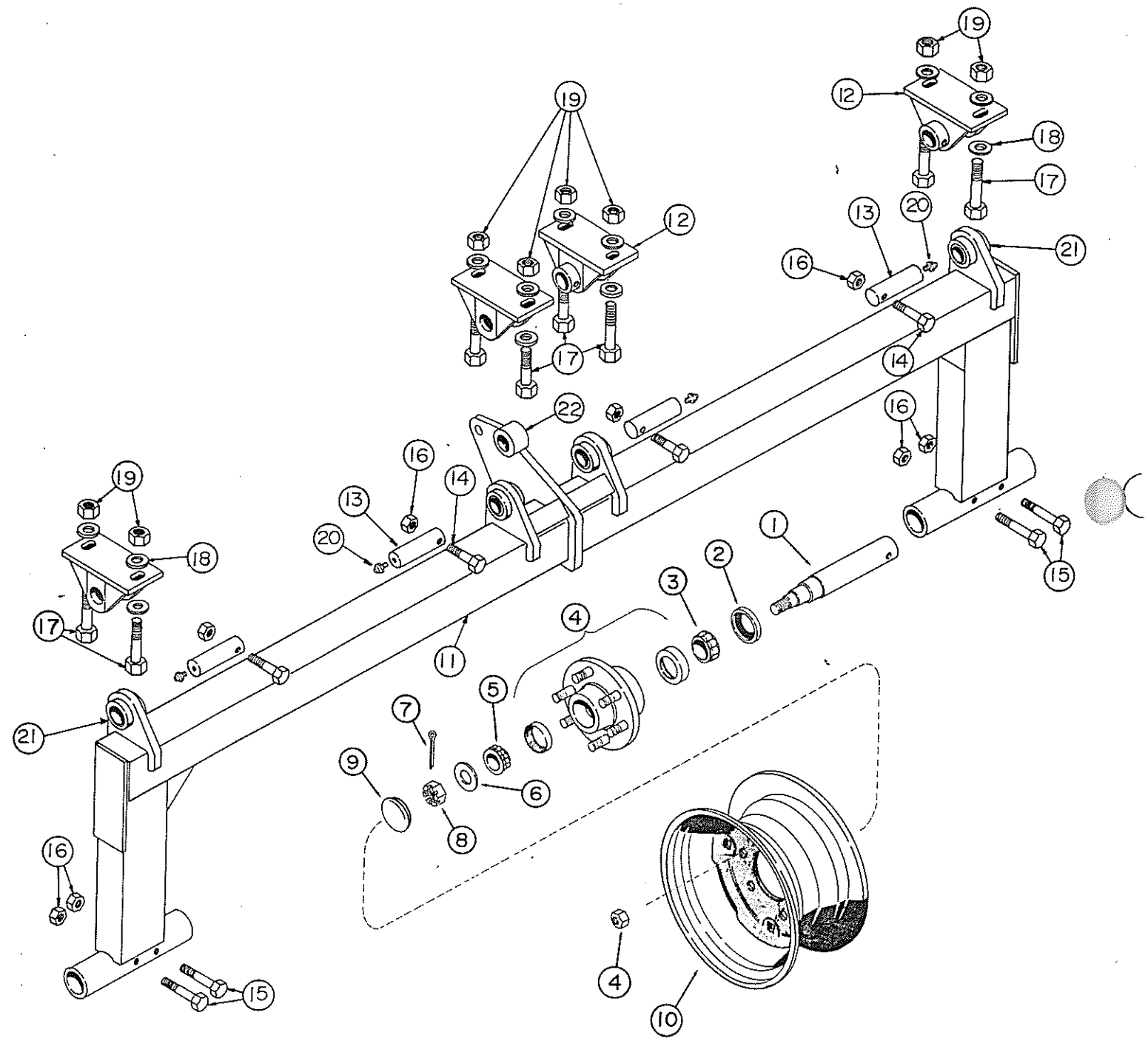
**AMCO F12 SERIES DISK HARROW
MAIN FRAME**

Ref. No.	Part No.	Description	No. Req'd
1	0745	Frame — Main	1
2	1460	Hydraulic Cylinder Bracket.....	1
3	6388	Pivot Pin 1-1/2 Dia. x 3-1/2 Long	1
4	10087	Cotter Pin 1/4 x 2	2
5	10130	Carriage Bolt 5/8 x 5 NC, PL	8
6	10299	Lock Nut 5/8 NC, PL	8
8	10370	Carriage Bolt 7/8 x 5-1/2 NC, PL.....	18
9	10396	Lock Nut 7/8 NC, PL	18
11	6344	Transport Bar	1
12	0388	Transport Pin	1
13	10317	Klik Pin 1/4.....	1
14	10727	Machine Bolt 3/4 x 3 NC, PL, GR5	1
15	10300	Lock Nut 3/4 NC, PL	1
16	0742	Bar — Side RH	1
17	0741	Bar — Side LH	1
19	1171	Bar — Front or Rear - 3 x 4 x 104'' for 34 to 54 blade (12'6''-20'0'')	2
19	1481	Bar — Front or Rear - 3 x 4 x 124'' for 54 to 62 blade (20'0''-23'0'')	2
20	11118	AMBER - Reflective tape (FRONT).....	2
21	11117	RED - Reflective tape (REAR).....	2

NOTE: RED reflective tape must be placed on the rear of the Main Frame. AMBER reflective tape must be placed on the front of the Main Frame.

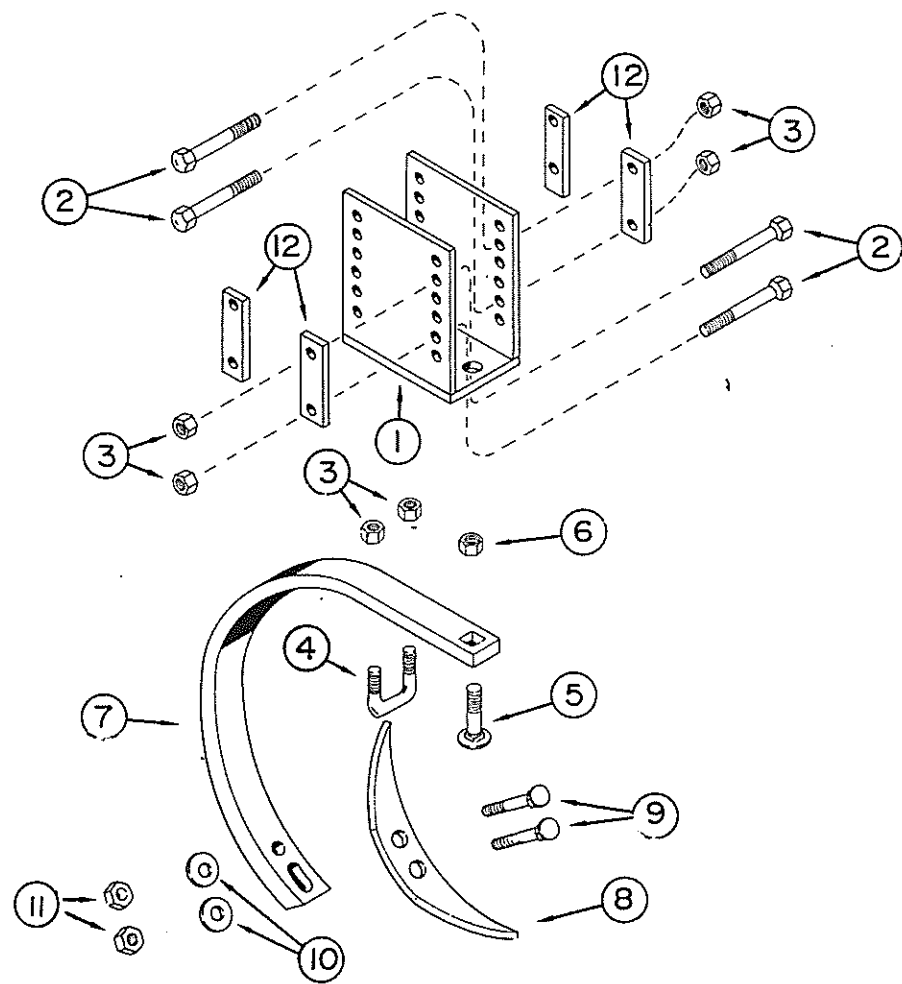
ROCKSHAFT

**AMCO F12 SERIES DISK HARROW
ROCKSHAFT**



Ref. No.	Part No.	Description	No. Req'd
1	10880	Spindle 50mm Dia. x 13 Long	4
2	10256	Seal (C/R#22870)	4
3	10258	Cone — Inner Timken 342A	4
4	11297	Hub — W/2 Cups & 6 Hub Bolts and Nuts	4
4	10257	Cup — Inner Timken 332	4
4	10261	Cup — Outer Timken 14276	4
4	11299	Hub Bolt 1/2 x 1-7/8 — NF	24
4	11046	Hub Nut 1/2 — NF	24
5	10262	Cone — Outer Timken 14137A	4
6	10263	Washer 7/8	4
7	10291	Cotter Pin 5/32 x 1-1/4	4
8	10264	Slotted Nut 7/8 NF	4
9	10242	Cap — Hub	4
10	10936	Wheel 15 x 8 — 6 Bolt	4
10	11236	Wheel 15 x 10 — 6 Bolt (Optional)	4
11	20076	Rockshaft W/Bushings (104" main frame)	1
11	20037	Rockshaft W/Bushings (124" main frame)	1
12	0754	Base — Rockshaft Bearing	4
13	9209	Pin — Retainer 1-1/2 Dia. x 5-1/4 Long	4
14	10765	Machine Bolt 3/8 x 2-1/2 NC, PL, GR5	4
15	10773	Machine Bolt 3/8 x 3-1/2 NC, PL, GR5	4
16	10509	Lock Nut 3/8 NC, PL	8
17	10671	Hex Bolt 3/4 x 5 NC, PL, GR5	8
18	10866	Cut Washer 3/4 PL	16
19	10300	Lock Nut 3/4 NC, PL	10
20	11081	Grease Fitting 5/16 Straight (Drive In)	4
21	9270	Bushing Bronze (Not Shown) 1-3/4 O.D. x 1-1/2 I.D. x 2 Long	4
22	11501	Bushing 1-1/2 O.D. x 1-1/4 I.D. x 1-1/2 Long	
BC-05-0098		Spindle and Hub Complete	

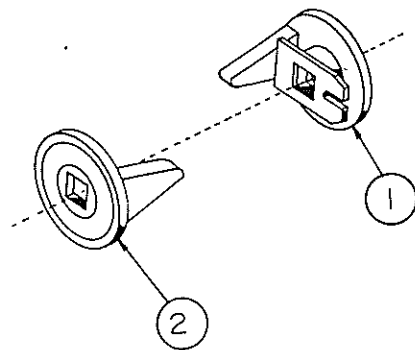
CENTER TOOTH ATTACHMENT



**AMCO F12 SERIES DISK HARROW
CENTER TOOTH ATTACHMENT**

Ref. No.	Part No.	Description	No. Req'd
1	0729	Buster — Balk	1
2	10666	Bolt — Machine 5/8 x 5 NC, PL, GR5	8
3	10299	Nut — Lock 5/8 NC, PL	10
4	100087	Bolt — “U” 5/8 Dia.	1
5	10389	Bolt — Carriage 3/4 x 2-1/2 NC, PL	1
6	10300	Nut — Lock 3/4 NC, PL	1
7	10378	Tine	1
8	10379	Spike	1
9	10420	Bolt — Plow 1/2 x 2-1/4 NC, PL	2
10	10832	Washer — 1/2 PL	2
11	10395	Nut — Lock 1/2 NC, PL	2
12	7928	Strap — Clamp 1/2 x 1-1/2 x 5-1/4 Long	4
	BB-01-0009	Center Tooth Attachment — Complete	

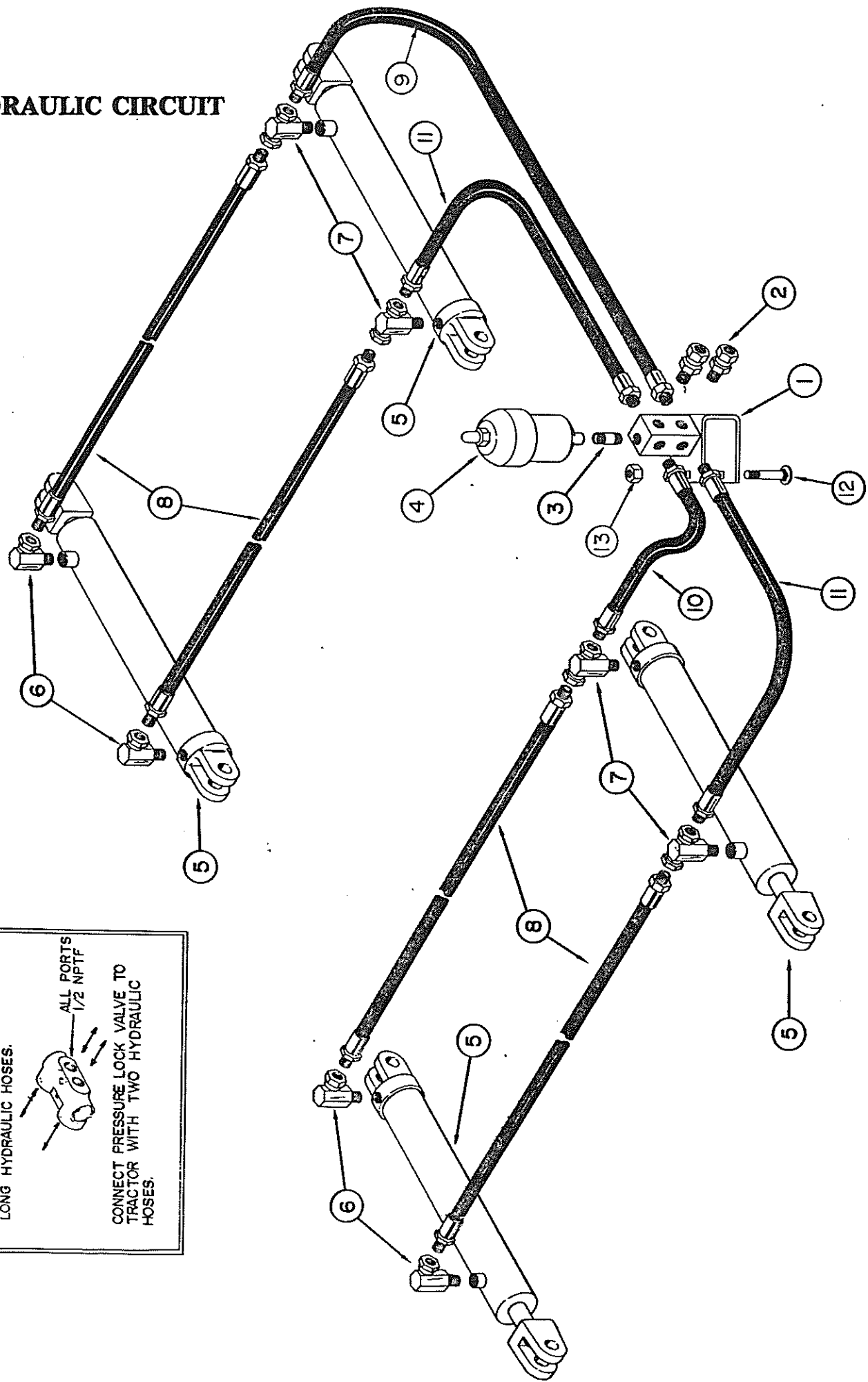
WING LOCK



**AMCO F12 SERIES DISK HARROW
WING LOCK**

Ref. No.	Part No.	Description	No. Req'd
1	0796	Wing Lock and End Washer	4
2	0797	Wing Lock and Bumper Washer	4
	BB-01-0013	Bundle Wing Locks Complete Set of 4 (NOT for use with shock absorber bearing risers)	

HYDRAULIC CIRCUIT



-OPTIONAL PRESSURE LOCK VALVE-
 CONNECT PRESSURE LOCK VALVE TO MANIFOLD WITH TWO 12" TO 24" LONG HYDRAULIC HOSES.
 ALL PORTS 1/2 NPTF
 CONNECT PRESSURE LOCK VALVE TO TRACTOR WITH TWO HYDRAULIC HOSES.

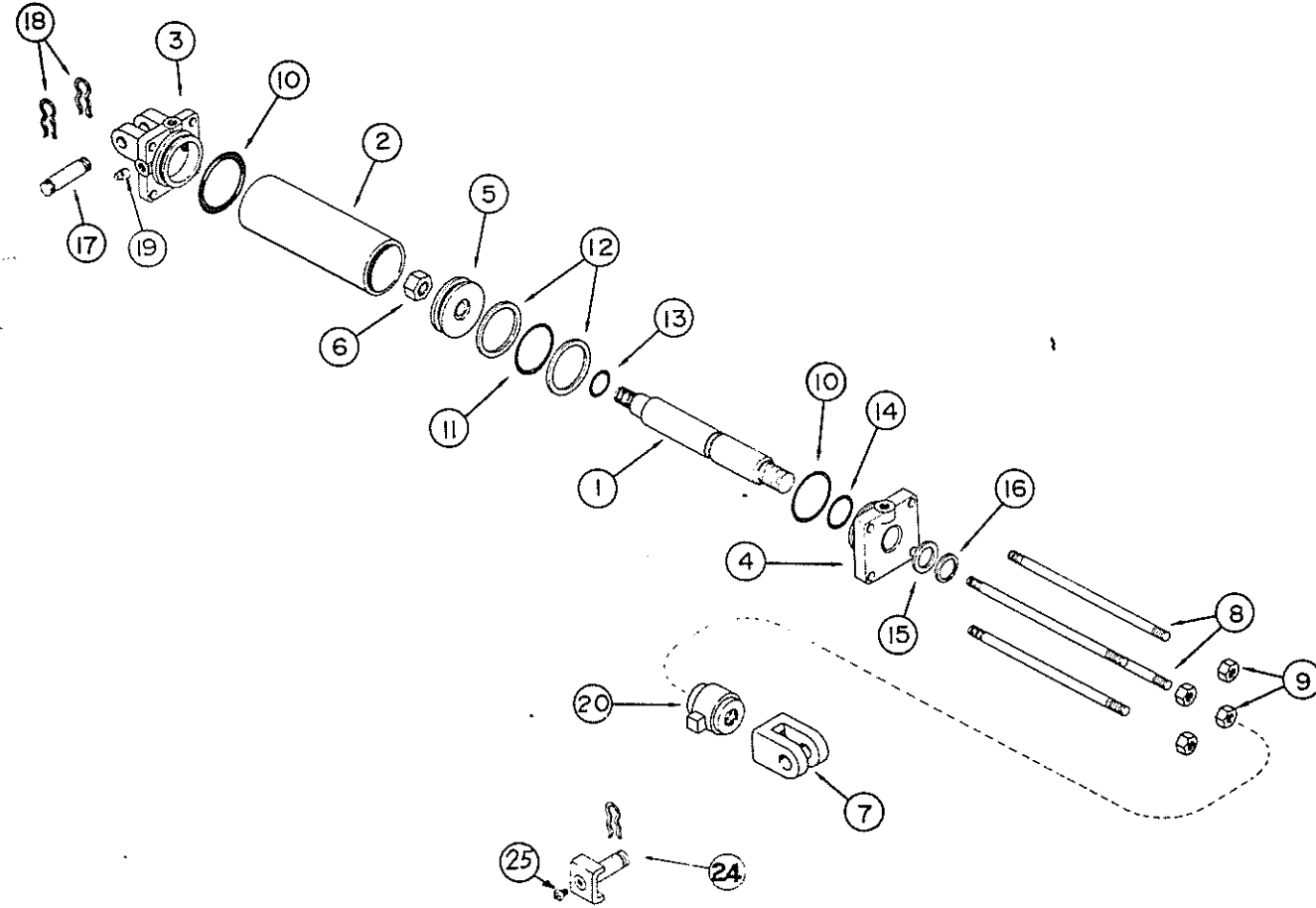
**AMCO F12 SERIES DISK HARROW
 HYDRAULIC CIRCUIT**

Ref. No.	Part No.	Description	No. Req'd	
			104'' 50-54 Blade	124'' 50-54-62 Blade
1	0764	Assy. Manifold.....	1	1
2	10932	Restrictor	2	2
3	11097	Nipple — Adapter	1	1
4	10920	Accumulator.....	1	1
5	11377	Cylinder 3 x 16	4	4
6	11127	Elbow — 90° Swivel 1/2 NPTF to 1/4 NPTF.....	4	4
7	11126	Tee — Male Branch 1/2	4	4
8	11123	Hose 1/4 x 96''	1	1
9	11168	Hose 1/4 x 66''	1	—
9	11121	Hose 1/4 x 72''	—	1
10	11174	Hose 1/4 x 30''	1	—
10	11119	Hose 1/4 x 36''	—	1
11	11166	Hose 1/4 x 48''	2	—
11	11120	Hose 1/4 x 54''	—	2
12	10647	Carriage Bolt 1/2 x 4 NC, PL.....	1	1
13	10395	Lock Nut 1/2 NC, PL	1	1
	11462	Pipe Sealant — 6cc Tube (with teflon).....	1	1

**AMCO F12 SERIES DISK HARROW
 PRESSURE LOCK VALVE (OPTIONAL)**

Ref. No.	Part No.	Description	No. Req'd
1	11109	Pressure Lock Valve	1

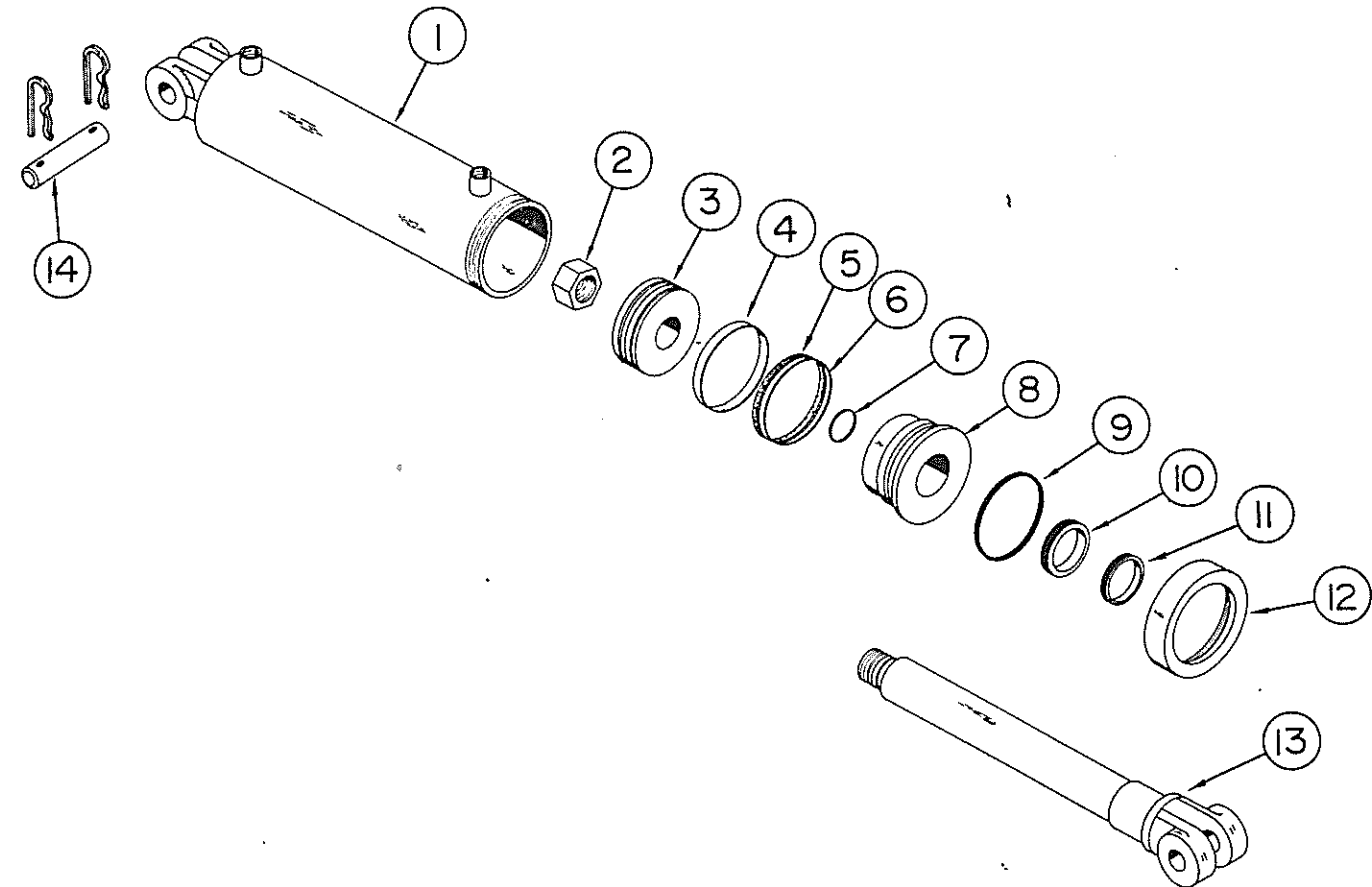
**AMCO F12 SERIES DISK HARROW
4 x 8 HYDRAULIC CYLINDER**



Ref. No.	Part No.	Description	No. Req'd
1	10965	Rod — Piston	1
2	10966	Tube	1
3	10952	Butt.	1
4	10967	Head — Piston	1
5	10968	Piston	1
6	10980	Nut — Lock 1" - 14 NF	1
7	11502	Clevis for 1-1/4 Dia. Pin	1
8	10970	Rod — Tie	4
9	10139	Nut — Hex 5/8 NC, PL	4
17	10956	Pin — Clevis 1" x 4"	1
18	11541	Clip	3
19	10978	Plug — Pipe 1/2 NPT	1
20	10937	Control — Stroke	1
24	20053	Pin — 1-1/4 Dia. (with lube fitting)	1
25	10606	Fitting — Grease	1
21	10976	Kit — Seal Repair (prince #8600)	1
10	10958	“O” Ring	2
11	10959	“O” Ring	1
12	10960	Washer	2
13	10971	“O” Ring	1
14	10972	“O” Ring	1
15	10973	Washer	1
16	10974	Wiper	1
	BB-20-0004	4 x 8 Cylinder Complete (prince #S-971)	

NOTE: Seal Repair Kit Parts Available in Repair Kits only
(Ref. No. 10-16)

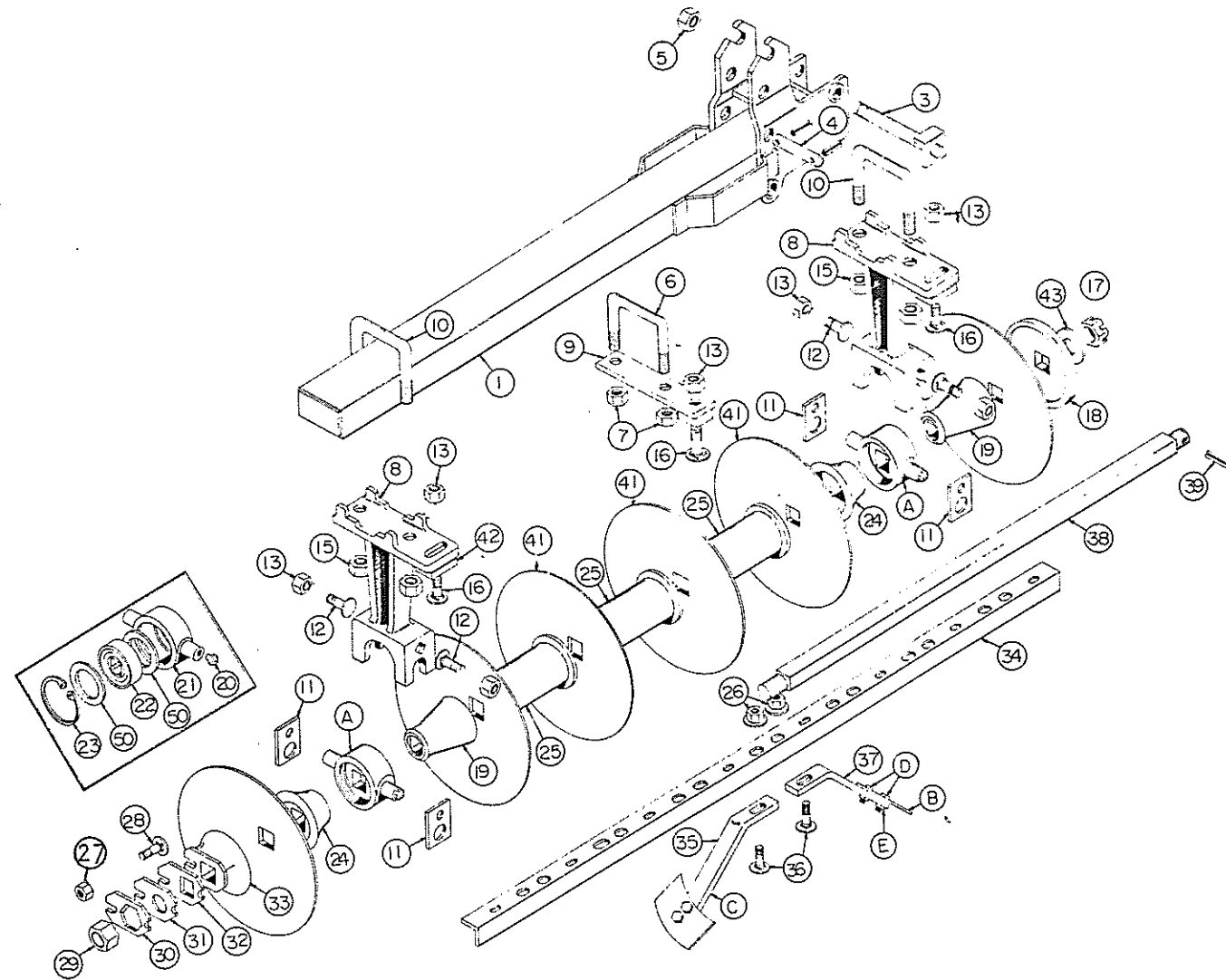
**AMCO F12 SERIES DISK HARROW
3 x 16 HYDRAULIC CYLINDER (Lantex BL Series)**



Ref. No.	Part No.	Description	No. Req'd
	11377	Cylinder Complete (Lantex #3752-BL)	1
1	11386	Barrel Assy	1
2	10980	Lock Nut — Self Locking 1" - 14NF	1
3	11384	Piston	1
4	*11390	Wear Ring	1
5	*11388	Piston Seal	1
6	*11389	“O” Ring	1
7	*11252	Rod Static Seal	1
8	11382	Gland	1
9	*11387	Gland Static Seal	1
10	*11250	Rod Seal	1
11	*11251	Rod Wiper	1
12	11383	Collar	1
13	11385	Rod Assy	1
14	11396	Pin Assy. w/2 Hair Pin Clips 1" Dia. x 4" Long	1
	11391	Seal Repair Kit	

Note: Item 4, 5, 6, 7, 9, 10 and 11 sold in Seal Repair Kit Only

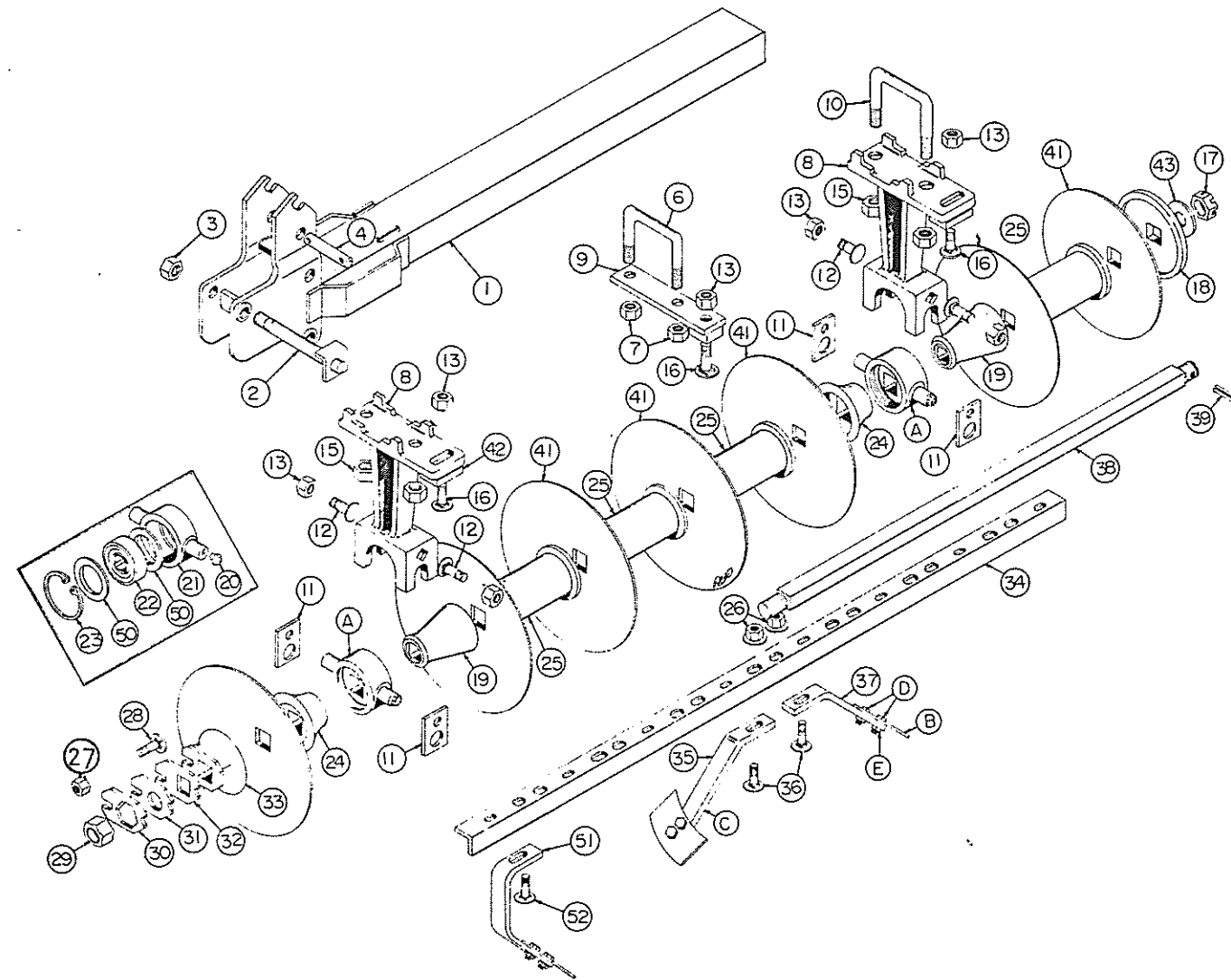
AMCO F12 SERIES DISK HARROW FRONT WING GANG



Ref. No.	Part No.	Description	No. Required				
			104" Frame	54	54	58	62
1	0565A	Assy. Wing Gang Frame — 32-1/2" Long	1	—	1	—	—
1	0564A	Assy. Wing Gang Frame — 40" Long	—	1	—	1	—
1	0566A	Assy. Wing Gang Frame — 49" Long	—	—	—	—	1
3	0727	Assy. Pivot Pin 1-1/4 Dia. x 8-3/8 Long	1	1	1	1	1
4	6554	Hitch Pin 1" Dia. 5" Long	1	1	1	1	1
5	10397	Lock Nut 1-1/4 NC, PL	1	1	1	1	1

Ref. No.	Part No.	Description	No. Required			
			104" Frame	54	54	58
6	6513	"U" Bolt 3/4 Dia.	—	—	—	—
7	10300	Lock Nut 3/4 NC, PL	—	—	—	—
8	16012A	Bearing Riser	2	2	2	2
9	20062	Scraper Bar Support	—	—	—	—
10	11280	"U" Bolt 7/8" Dia.	2	2	2	2
11	9628	Clamp Trunion 3/8 x 2-1/2 x 3-3/4	4	4	4	4
12	10665	Carriage Bolt 5/8 x 2 — NC, PL, GR5	4	4	4	4
13	11647	FLANGE LOCK NUT 5/8 NC, PL	4	4	4	4
15	10396	Lock Nut 7/8 NC, PL	4	4	4	4
16	11115	Carriage Bolt 5/8 x 2-3/4 NC, PL, GR5	2	2	2	2
17	10226	Nut Gang Bolt 1-1/2 NF Slotted	1	1	1	1
18	2404	Bumper Washer	1	1	1	1
19	17014	End Bell — Small	2	2	2	2
A	FB-09-0015	Bearing & Housing (s/n .226. & UP.)	2	2	2	2
20	10606	Grease Fitting	1	1	1	1
21	16003	Bearing Housing	1	1	1	1
22	11503	Bearing (Fafnir GW11PP-17)	1	1	1	1
50	100104	Washer 100mm	2	2	2	2
23	11064	Retainer Ring	1	1	1	1
24	17010	End Bell — Large	2	2	2	2
25	0522	Spacer Spool	1	2	1	2
26	11646	Flange Lock Nut 1/2 NC, PL	4	4	4	4
27	10395	LOCK NUT 1/2 NC, PL	1	1	1	1
28	10710	Carriage Bolt 1/2 x 2 NC, PL	1	1	1	1
29	10489	Nut Gang Bolt — 1-1/2 NF	1	1	1	1
30	5622A	Lock Plate	1	1	1	1
31	100098	Bearing Plate	1	1	1	1
32	100099	Spacer Plate	1	1	1	1
33	1222A	End Gang Washer	1	1	1	1
34	9476	Scraper Bar — 33-5/16 Long	1	—	1	—
34	9475	Scraper Bar — 42-1/2 Long	—	1	—	1
34	9548	Scraper Bar — 51-11/16 Long	—	—	—	—
35	0789	Scraper L.H.	3	4	3	4
B	100270	Scraper Blade 3/16 x 4 x 6	1	1	1	1
C	100271	Scraper Leg 1/2 x 1-1/2	1	1	1	1
D	11652	MACHINE BOLT 1/2 x 1 1/4 (black)	2	2	2	2
E	10395	Lock Nut 1/2 NC, PL	2	2	2	2
36	10870	Carriage Bolt 1/2 x 1-1/2 NC, PL, GR5	3	4	3	4
37	0788	Scraper R.H. (same components as 0789)	3	4	3	4
38	9440	Gang Bolt — 1-1/2 Sq. 33-5/8 Long	1	—	1	—
38	9441	Gang Bolt — 1-1/2 Sq. 42-7/8 Long	—	1	—	1
38	9442	Gang Bolt — 1-1/2 Sq. 52-1/8 Long	—	—	—	—
39	10910	Roll Pin 5/16 x 2-1/4	3	3	3	3
40	9484	Blade 22 x 3/16 C.O.	4	5	4	5
40	2455	Blade 24 x 3/16 C.O.	4	5	4	5
40	3275	Blade 22 x 1/4 C.O.	4	5	4	5
40	3250	Blade 24 x 1/4 C.O.	4	5	4	5
40	9487	Blade 20 x 3/16 C.O.	4	5	4	5
41	9480	Blade 22 x 3/16 Plain	4	5	4	5
41	3253	Blade 24 x 3/16 Plain	4	5	4	5
41	3276	Blade 22 x 1/4 Plain	4	5	4	5
41	3255	Blade 24 x 1/4 Plain	4	5	4	5
41	9481	Blade 20 x 3/16 Plain	1	1	1	1
41	3278	Blade 10 x 11 Ga. Plain (Back-Up)	1	1	1	1
42	100974	Shim 3/4 x 2 x 3	2	2	2	2
43	10872	Cut Washer 1-3/8 PL	1	1	1	1

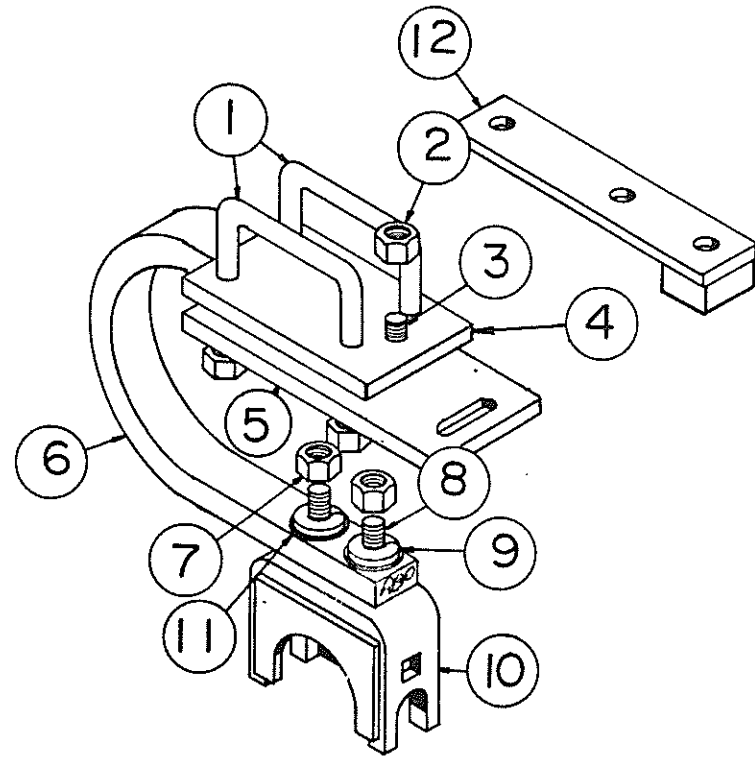
AMCO F12 SERIES DISK HARROW REAR WING GANG



Ref. No.	Part No.	Description	No. Required				
			104" Frame		124" Frame		
			50	54	54	58	62
1	0763	Assy. Wing Gang Frame — 58-1/4" Long	—	—	—	—	1
1	0564A	Assy. Wing Gang Frame — 40" Long	1	—	1	—	—
1	0566A	Assy. Wing Gang Frame — 49" Long	—	1	—	1	—
3	0727	Assy. Pivot Pin 1-1/4 Dia. x 8-3/8 Long	1	1	1	1	1
4	6554	Hitch Pin 1" Dia. 5" Long	1	1	1	1	1
5	10397	Lock Nut 1-1/4 NC, PL	1	1	1	1	1
6	6513	"U" Bolt 3/4 Dia.	—	—	—	—	1
7	10300	Lock Nut 3/4 NC, PL	—	—	—	—	2
8	16012A	Bearing Riser	2	2	2	2	2
9	20062	Scraper Bar Support	—	—	—	—	1

Ref. No.	Part No.	Description	No. Required				
			104" Frame		124" Frame		
			50	54	54	58	62
10	11280	"U" Bolt 7/8" Dia.	2	2	2	2	2
11	9628	Clamp Trunion 3/8 x 2-1/2 x 3-3/4	4	4	4	4	4
12	10665	Carriage Bolt 5/8 x 2 — NC, PL, GR5	4	4	4	4	4
13	11647	FLANGE LOCK NUT 5/8 NC, PL	7	7	7	7	7
15	10396	Lock Nut 7/8 NC, PL	4	4	4	4	4
16	11115	Carriage Bolt 5/8 x 2-3/4 NC, PL, GR5	2	2	2	2	2
17	10226	Nut Gang Bolt 1-1/2 NF Slotted	1	1	1	1	1
18	2404	Bumper Washer	1	1	1	1	1
19	17014	End Bell — Small	2	2	2	2	2
A	FB-09-0015	Bearing & Housing (.s/n. 226. & .MP.)	2	2	2	2	2
20	10606	Grease Fitting	1	1	1	1	1
21	16003	Bearing Housing	1	1	1	1	1
22	11503	Bearing (fafnir GW11PP-17)	1	1	1	1	1
50	100104	Washer 100mm	2	2	2	2	2
23	11064	Retainer Ring	2	2	2	2	2
24	17010	End Bell — Large	2	2	2	2	2
25	0522	Spacer Spool	3	4	3	4	5
26	11646	Flange Lock Nut 1/2 NC, PL	6	7	6	7	8
27	10395	LOCK NUT 1/2 NC, PL	1	1	1	1	1
28	10710	Carriage Bolt 1/2 x 2 NC, PL	1	1	1	1	1
29	10489	Nut Gang Bolt	1	1	1	1	1
30	5622A	Lock Plate	1	1	1	1	1
31	100098	Bearing Plate	1	1	1	1	1
32	100099	Spacer Plate	1	1	1	1	1
33	1222A	End Gang Washer	1	1	1	1	1
34	9549	Scraper Bar — 60-7/8" Long	—	—	—	—	1
34	9475	Scraper Bar — 42-1/2" Long	1	—	1	—	—
34	9548	Scraper Bar — 51-11/16" Long	—	1	—	1	—
35	0789	Scraper L.H.	5	6	5	6	7
B	100270	Scraper Blade 3/16 x 4 x 6	1	1	1	1	1
C	100271	Scraper Leg 1/2 x 1-1/2	1	1	1	1	1
D	11652	MACHINE BOLT 1/2 x 1 1/4 (black)	2	2	2	2	2
E	10395	Lock Nut 1/2 NC, PL	2	2	2	2	2
36	10870	Carriage Bolt 1/2 x 1-1/2 NC, PL, GR5	4	5	4	5	6
37	0788	Scraper R.H. (same components as 0789)	5	6	5	6	7
38	9444	Gang Bolt — 1-1/2 Sq. 70-5/8" Long	—	—	—	—	1
38	9442	Gang Bolt — 1-1/2 Sq. 52-1/8" Long	1	—	1	—	—
38	9443	Gang Bolt — 1-1/2" Sq. 61-3/8" Long	—	1	—	1	—
39	10910	Roll Pin 5/16 x 2-1/4	3	3	3	3	3
40	9484	Blade 22 x 3/16 C.O.	4	5	4	5	6
40	2455	Blade 24 x 3/16 C.O.	4	5	4	5	6
40	3275	Blade 22 x 1/4 C.O.	4	5	4	5	6
40	3250	Blade 24 x 1/4 C.O.	4	5	4	5	6
40	9487	Blade 20 x 3/16 C.O.	1	1	1	1	1
41	9480	Blade 22 x 3/16 Plain	4	5	4	5	6
41	3253	Blade 24 x 3/16 Plain	4	5	4	5	6
41	3276	Blade 22 x 1/4 Plain	4	5	4	5	6
41	3255	Blade 24 x 1/4 Plain	4	5	4	5	6
41	9481	Blade 20 x 3/16 Plain	1	1	1	1	1
41	3055	Blade 16 x 9 Ga. Plain	1	1	1	1	1
41	9482	Blade 18 x 8 Ga. Plain	1	1	1	1	1
42	100974	Shim 3/4 x 2 x 3	2	2	2	2	2
43	10872	Cut Washer 1-3/8 PL	1	1	1	1	1
51	082-4	Assy. Scraper — Special R.H.	1	1	1	1	1
51	082-5	Assy. Scraper — Special L.H.	1	1	1	1	1
52	10097	Machine Bolt 1/2 x 2-1/2 NC, PL, GR5	1	1	1	1	1

**AMCO F12 SERIES DISK HARROW
SHOCK ABSORBER BEARING RISER**

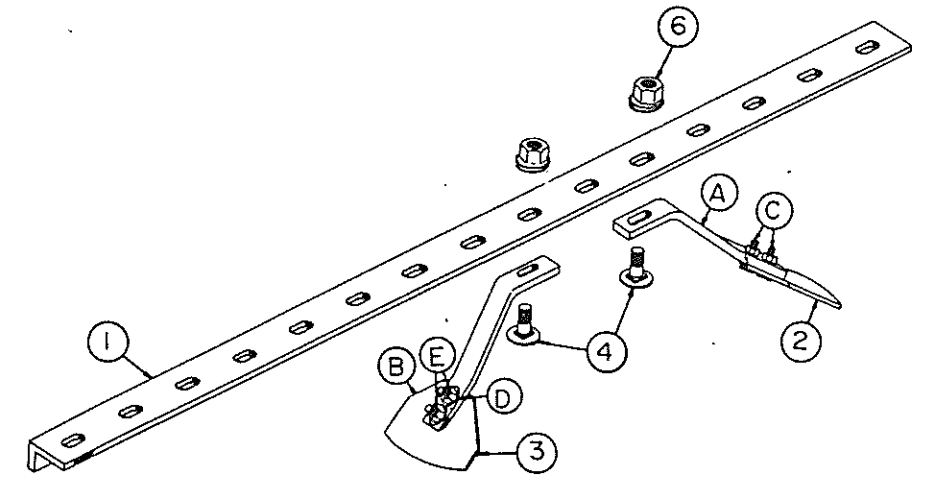


Ref. No.	Part No.	Description	No. Req'd
1	11467	"U" Bolt 3/4 Dia. — 18-1/4" Long	2
2	10300	Lock Nut 3/4 NC, PL.....	5
3	10320	Machine Bolt 3/4 x 3-1/2 NC, PL, GR5.....	1
5	100801	Plate 1-1/2 x 5 — 12" Long.....	1
4	100802	Plate 1/2 x 5 — 8-3/4" Long.....	1
6	11521	Shock Absorber Shank (pp).....	1
7	10585	Hex Nut 3/4 NF, CH	2
8	10579	Carriage Bolt 3/4 x 3 NF, GR5	2
9	10061	Lock Washer 3/4	2
10	0944	Assy. Trunnion Mount.....	1
11	10866	Cut Washer 3/4 PLT	2
12	20061	Scraper Bar Support.....	1

NOTE: Parts 1 - 11 are required to replace Bearing Riser 16012 on a Shock Absorber Harrow. Part 12 used to replace 20062 on a Shock Absorber Harrow.

13 100170 Scraper Bar Mount - MUST be used in place of #100365 on front inside gangs when using Shock Absorber bearing risers.....1 (see Page 16 for #100365 placement)

**AMCO F12 SERIES DISK HARROW
OPTIONAL HEAVY DUTY SCRAPERS**



Ref. No.	Part No.	Description	No. Required							
			Blades			124" Fram				
			34	38	42	50	54	54	58	60
1	101071	Scraper Bar 3 x 2 x 3/8 L - 36-5/8" Long	—	—	—	—	2	—	2	—
1	101090	Scraper Bar 3 x 2 x 3/8 L - 27-3/8" Long	—	—	—	2	—	2	—	—
1	101073	Scraper Bar 3 x 2 x 3/8 L - 45-7/8" Long	—	—	—	—	—	—	—	—
1	101074	Scraper Bar 3 x 2 x 3/8 L - 50-1/2" Long	—	—	—	2	—	2	—	—
1	101075	Scraper Bar 3 x 2 x 3/8 L - 55-1/8" Long	—	—	—	2	2	—	—	—
1	101076	Scraper Bar 3 x 2 x 3/8 L - 59-3/4" Long	2	—	—	—	2	—	2	—
1	101077	Scraper Bar 3 x 2 x 3/8 L - 64-3/8" Long	—	—	—	—	—	2	2	—
1	101078	Scraper Bar 3 x 2 x 3/8 L - 69" Long	2	2	—	2	2	—	—	—
1	101080	Scraper Bar 3 x 2 x 3/8 L - 78-1/4" Long	—	2	2	—	—	2	2	—
1	101082	Scraper Bar 3 x 2 x 3/8 L - 87-1/2" Long	—	—	2	—	—	—	—	—
2	20068	Scraper — R.H.....	15	17	19	23	25	25	27	—
A	101049	Scraper Shank .360 x 2	1	1	1	1	1	1	1	1
B	101019	Scraper Blade 3/16 x 6-1/2.....	1	1	1	1	1	1	1	1
C	11652	MACHINE BOLT 1/2 x 1 1/4 (black) 2	2	2	2	2	2	2	2	2
E	10395	Lock Nut 1/2 NC, PL.....	2	2	2	2	2	2	2	2
3	20069	Scraper - LH.....	15	17	19	23	25	25	27	—
4	10135	Carriage Bolt 5/8 x 1-3/4 NC, PL, GR5.....	30	34	38	46	50	50	54	—
6	11647	FLANGE LOCK NUT 5/8 NC, PL.....	30	34	38	46	50	50	54	—

