

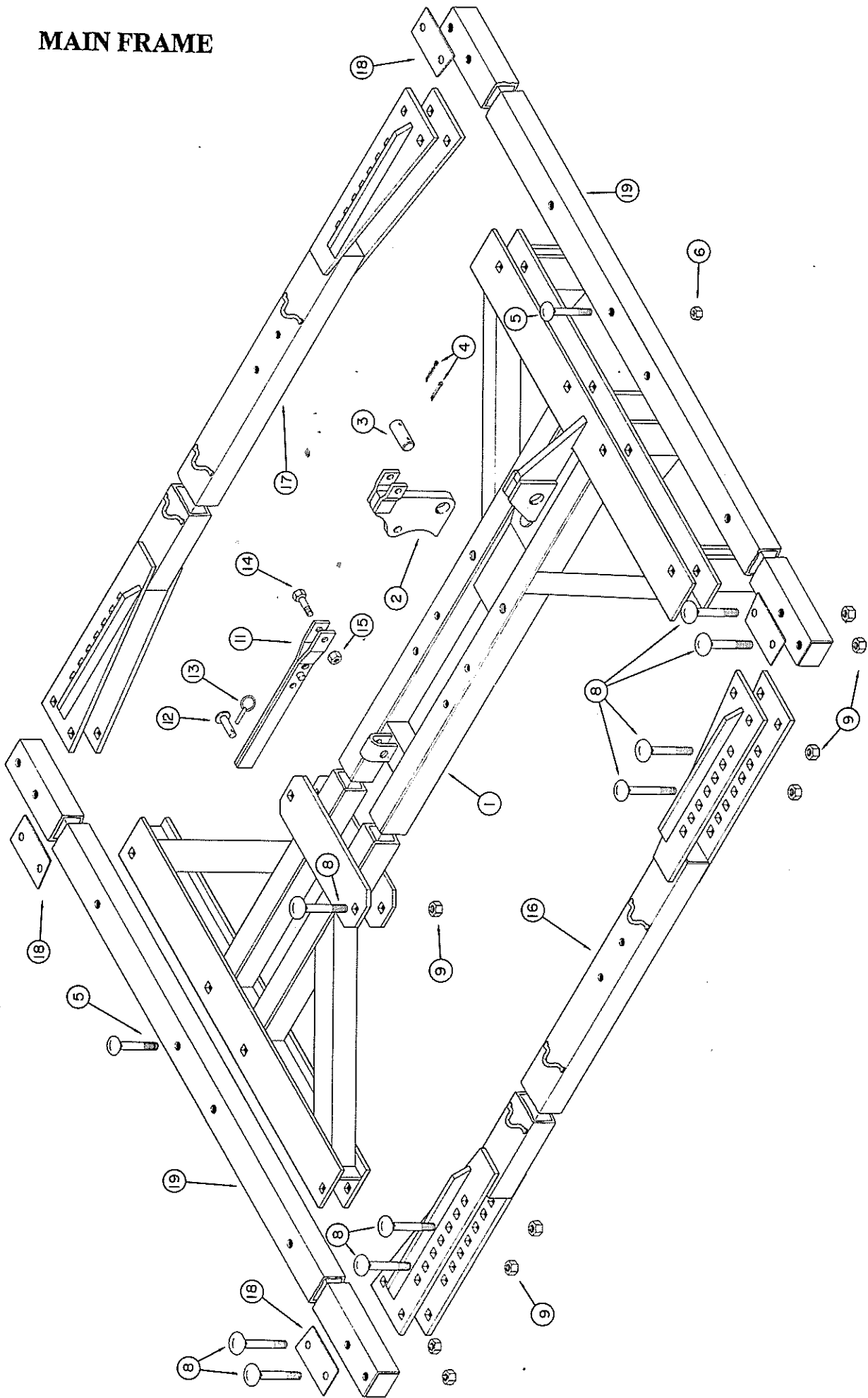
F7 & J7

Temporary
Parts
Catalog

HITCH

Ref. No.	Part No.	Description	No. Req'd
1	16001	Clevis — Pull.....	1
2	9204	Bushing — Clevis	1
3	9205	Bushing — Clevis	1
4	10865	Machine Bolt 3/4 x 9 NC, PL	1
5	10866	Washer 3/4 PL	2
6	10300	Nut — Lock 3/4 NC, PL	3
7	0608A	Tongue — Pull	1
8	5396	Pivot Pin	1
9	10373	Hex Bolt 1 x 3-1/2 NC, PL	2
10	10868	Lock Nut 1 NC	2
11	100061	Hose Holder	1
12	10075	Cotter Pin 1/4 x 1-1/2	3
13	10320	Machine Bolt 3/4 x 3-1/2 NC, PL.....	2
14	1166	Cap.....	1
15	10460	Spring.....	2
16	1167	Piston Rod.....	1
17	1479	Spring Housing.....	1
19	5403	Rod — Stud Threaded	1
20	11081	Grease Fitting	1
21	11261	Jack	1
22	100134	Gang Bolt Wrench	1

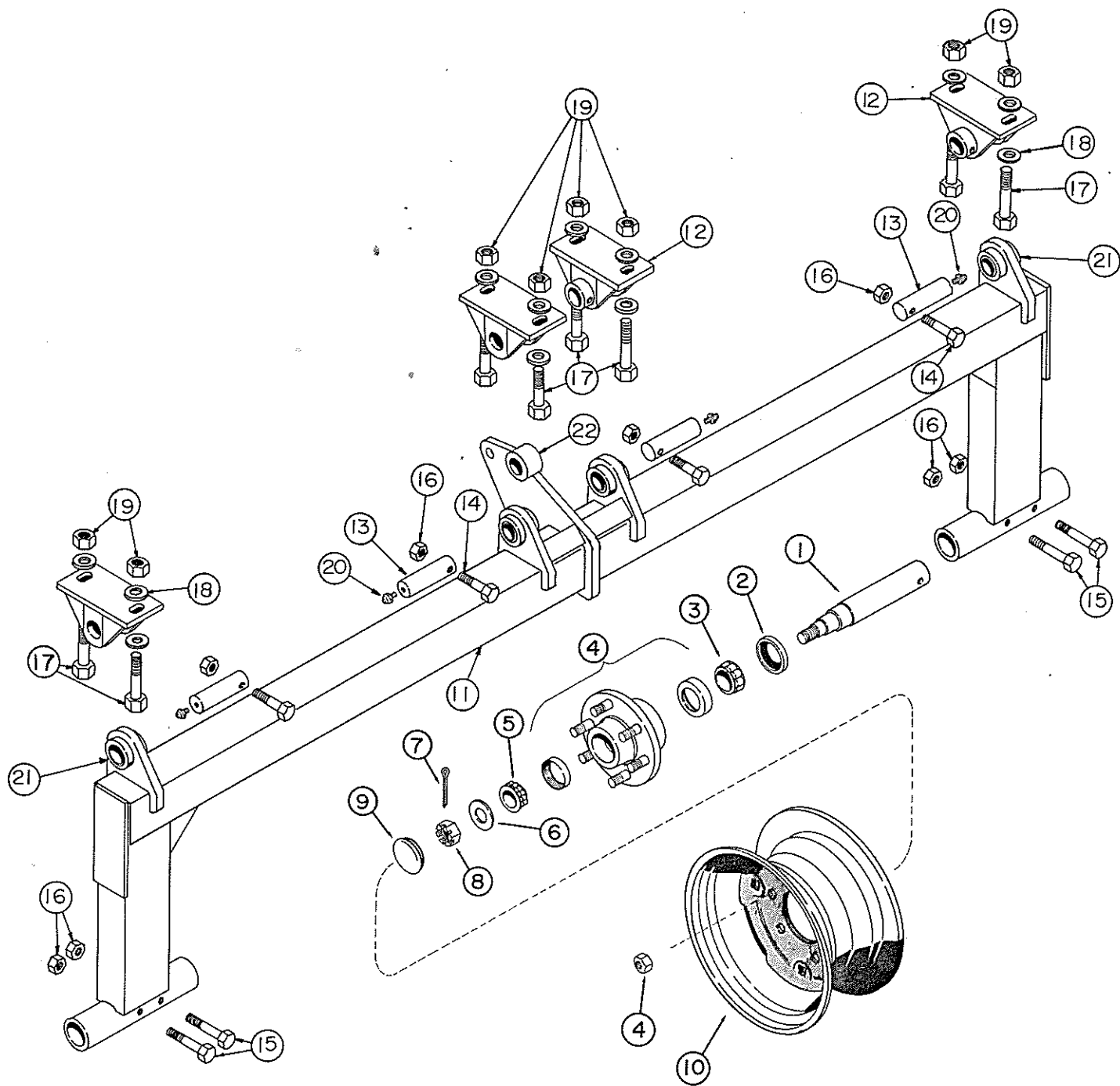
MAIN FRAME



MAIN FRAME

Ref. No.	Part No.	Description	No. Req'd
1	0745	Frame — Main	1
2	1460	Hydraulic Cylinder Bracket.....	1
3	6388	Pivot Pin 1-1/2 Dia. x 3-1/2 Long	1
4	10087	Cotter Pin 1/4 x 2	2
5	10130	Carriage Bolt 5/8 x 5 NC, PL	8
6	10299	Lock Nut 5/8 NC, PL	8
8	10370	Carriage Bolt 7/8 x 5-1/2 NC, PL.....	18
9	10396	Lock Nut 7/8 NC, PL	18
11	1443A	Transport Bar	1
12	0388	Transport Pin	1
13	10317	Klik Pin 1/4.....	1
14	10727	Machine Bolt 3/4 x 3 NC, PL, GR5	1
15	10300	Lock Nut 3/4 NC, PL	1
16	0742	Bar — Side RH	1
17	0741	Bar — Side LH	1
19	1171	Bar — Front or Rear - 3 x 4 x 104" (J7-30 Blade, F7 34 Blade).....	2
19	1481	Bar — Front or Rear - 3 x 4 x 124" (F7-38, 42 Blade; J7-34, 38 Blade).....	2

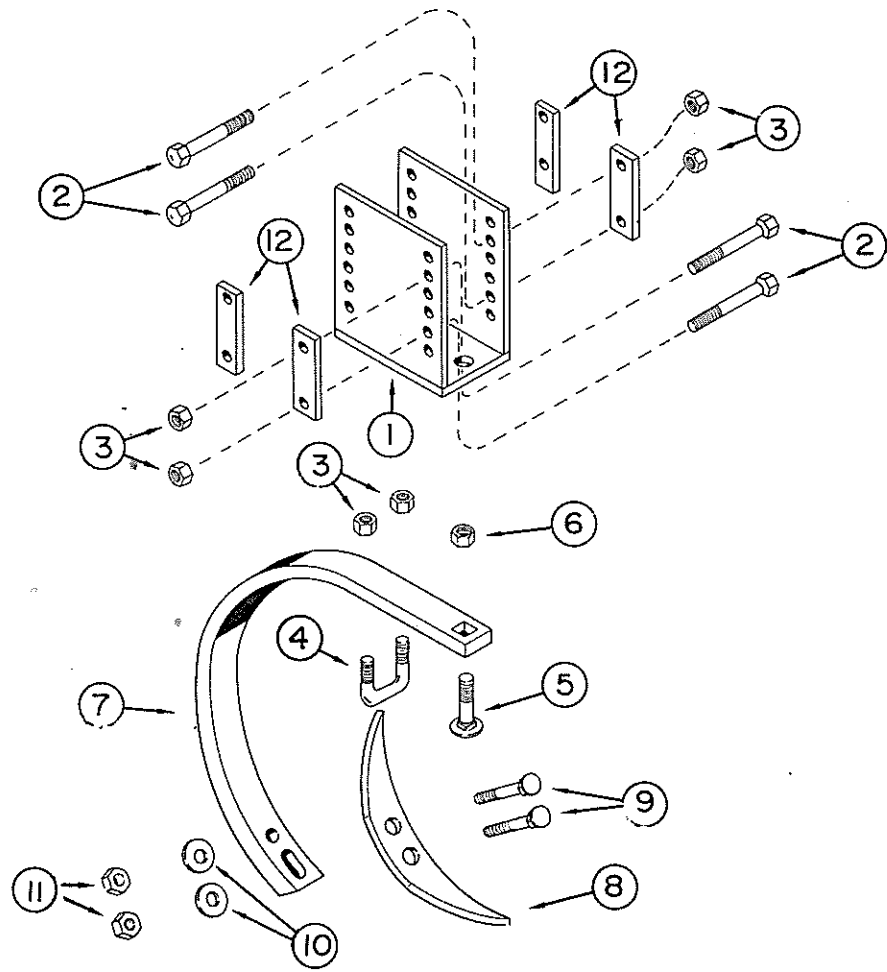
ROCKSHAFT



ROCKSHAFT

Ref. No.	Part No.	Description	No. Req'd
1	10880	Spindle 50mm Dia. x 13 Long	4
2	10256	Seal (C/R#22870)	4
3	10258	Cone — Inner Timken 342A	4
4	11297	Hub — W/2 Cups & 6 Hub Bolts and Nuts	4
4	10257	Cup — Inner Timken 332.	4
4	10261	Cup — Outer Timken 14276	4
4	11299	* Hub Bolt 1/2 x 1-7/8 — NF.	24
4	11046	Hub Nut 1/2 — NF.	24
5	10262	Cone — Outer Timken 14137A.	4
6	10263	Washer 7/8	4
7	10291	Cotter Pin 5/32 x 1-1/4	4
8	10264	Slotted Nut 7/8 NF	4
9	10242	Cap — Hub	4
10	10936	Wheel 15 x 8 — 6 Bolt.	4
10	11236	Wheel 15 x 10 — 6 Bolt (Optional)	4
11	20076	Rockshaft W/Bushings (104" main frame)	1
11	20037	Rockshaft W/Bushings (124" main frame)	1
12	0754	Base — Rockshaft Bearing	4
13	9209	Pin — Retainer 1-1/2 Dia. x 5-1/4 Long	4
14	10765	Machine Bolt 3/8 x 2-1/2 NC, PL, GR5	4
15	10773	Machine Bolt 3/8 x 3-1/2 NC, PL, GR5	4
16	10509	Lock Nut 3/8 NC, PL	8
17	10671	Hex Bolt 3/4 x 5 NC, PL, GR5	8
18	10866	Cut Washer 3/4 PL.	16
19	10300	Lock Nut 3/4 NC, PL	10
20	11081	Grease Fitting 5/16 Straight (Drive In)	4
21	9270	Bushing Bronze (Not Shown) 1-3/4 O.D. x 1-1/2 I.D. x 2 Long	4
22	11501	Bushing 1-1/2 O.D. x 1-1/4 I.D. x 1-1/2 Long	
	BC-05-0098	Spindle and Hub Complete	

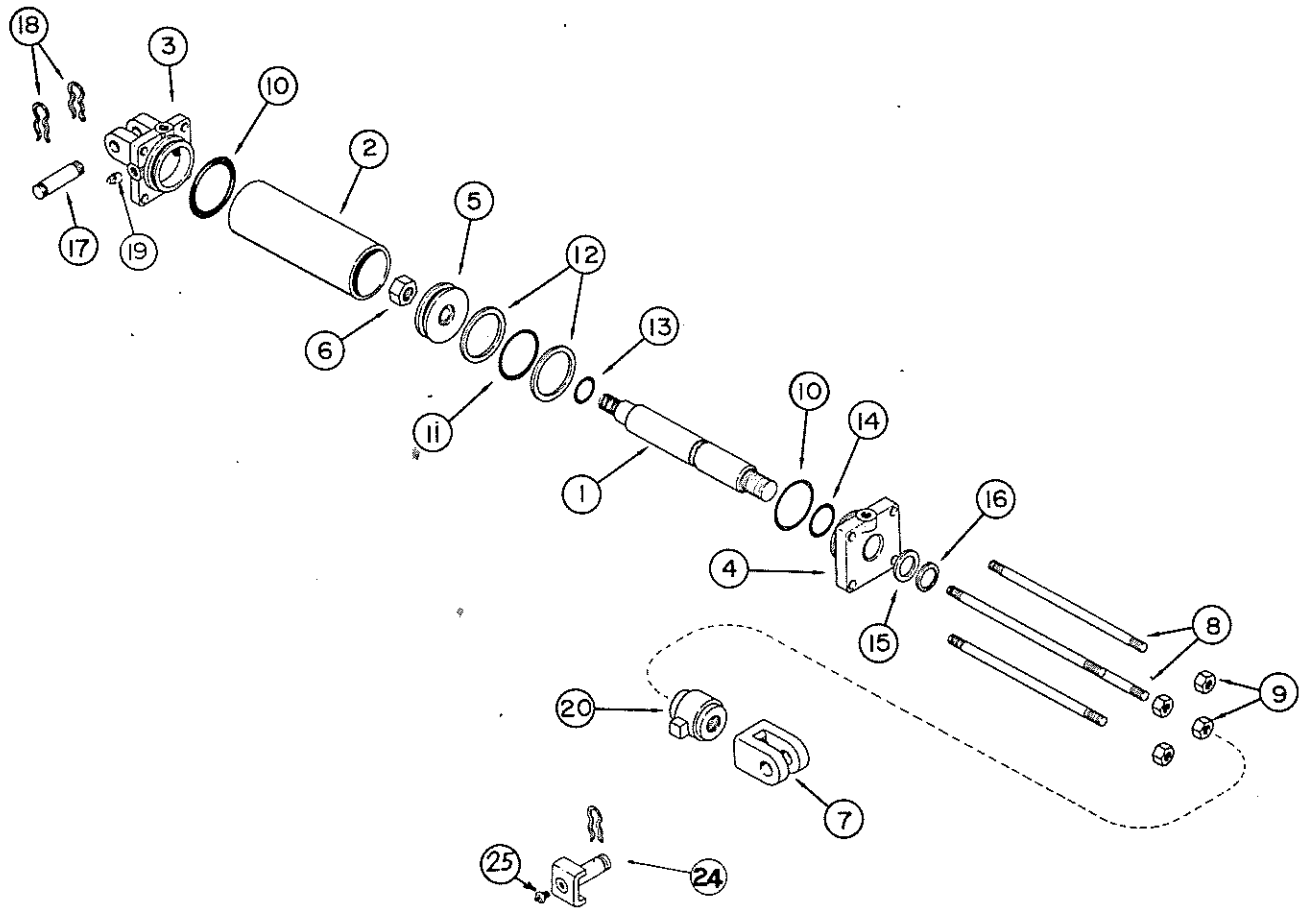
CENTER TOOTH ATTACHMENT



CENTER TOOTH ATTACHMENT

Ref. No.	Part No.	Description	No. Req'd
1	0729	Buster — Balk	1
2	10666	Bolt — Machine 5/8 x 5 NC, PL, GR5	8
3	10299	Nut — Lock 5/8 NC, PL	10
4	100087	Bolt — "U" 5/8 Dia.	1
5	10389	Bolt — Carriage 3/4 x 2-1/2 NC, PL	1
6	10300	Nut — Lock 3/4 NC, PL	1
7	10378	Tine	1
8	10379	Spike	1
9	10420	Bolt — Plow 1/2 x 2-1/4 NC, PL	2
10	10832	Washer — 1/2 PL	2
11	10395	Nut — Lock 1/2 NC, PL	2
12	7928	Strap — Clamp 1/2 x 1-1/2 x 5-1/4 Long	4
	BB-01-0009	Center Tooth Attachment — Complete	

4 x 8 HYDRAULIC CYLINDER



Ref. No.	Part No.	Description	No. Req'd
1	10965	Rod — Piston	1
2	10966	Tube	1
3	10952	Butt.	1
4	10967	Head — Piston	1
5	10968	Piston	1
6	10980	Nut — Lock 1" - 14 NF	1
7	11502	Clevis for 1-1/4 Dia. Pin	1
8	10970	Rod — Tie	4
9	10139	Nut — Hex 5/8 NC, PL	4
17	10956	Pin — Clevis 1" x 4"	1
18	11541	Clip	3
19	10978	Plug — Pipe 1/2 NPT	1
20	10937	Control — Stroke	1
24	20053	Pin — 1-1/4 Dia. (with lube fitting)	1
25	10606	Fitting — Grease	1
21	10976	Kit — Seal Repair (prince #8600)	1
10	10958	“O” Ring	2
11	10959	“O” Ring	1
12	10960	Washer	2
13	10971	“O” Ring	1
14	10972	“O” Ring	1
15	10973	Washer	1
16	10974	Wiper	1
	BB-20-0004	4 x 8 Cylinder Complete (prince #S-971)	

NOTE: Seal Repair Kit Parts Available in Repair Kits only
(Ref. No. 10-16)

F7 FRONT GANGS & GANG FRAMES

Part No.	Description	No. Req'd Blades		
		34	38	42
20082	Assy. Gang Frame Front - 63" Long.....	1	-	-
20077	Assy. Gang Frame Front - 73" Long.....	-	1	-
20078	Assy. Gang Frame Front - 83" Long.....	-	-	1
16012A	Bearing Riser.....	2	3	3
20062	Assy. Scraper Bar Support.....	1	-	-
100974	Shim 3/4 x 2 - 3 Long.....	2	3	3
6513	"U" Bolt 3/4 Dia.....	1	-	-
10300	Lock Nut 3/4 NC, PL.....	2	-	-
11280	"U" Bolt 7/8 Dia.....	2	3	3
10396	Lock Nut 7/8 NC, PL.....	5	7	7
101076	Scraper Bar 3 x 2 x 1/2 L - 59 3/4" Long.....	1	-	-
101078	Scraper Bar 3 x 2 x 1/2 L - 69" Long.....	-	1	-
101080	Scraper Bar 3 x 2 x 1/2 L - 78 1/4" Long.....	-	-	1
11115	Carriage Screw 5/8 x 2 3/4 NC, PL, GR5.....	3	3	3
10059	Flat Washer 5/8 PL.....	9	11	12
10299	Lock Nut 5/8 NC, PL.....	19	22	23
5638	Pivot Plate Upper.....	1	1	1
5636	Pivot Plate Lower.....	1	1	1
10130	Carriage Screw 5/8 x 5 NC, PL.....	5	5	5
10370	Carriage Screw 7/8 x 5 1/2 NC, PL.....	1	1	1
9628	Clamp Trunion.....	4	6	6
20068	Assy. Scraper - R.H.....	7	8	9
20069	Assy. Scraper - LH.....	7	8	9
10135	Carriage Screw 5/8 x 1 3/4 NC, PL, GR5.....	11	14	15
9444	Gang Bolt - 8 Blade.....	1	-	-
9445	Gang Bolt - 9 Blade.....	-	1	-
9446	Gang Bolt - 10 Blade.....	-	-	1
9578A	Bumper Washer.....	1	1	1
17007	End Bell - Small.....	2	3	3
17008	End Bell - Large.....	2	3	3
FB-09-0015	Sub. Assy. Bearing & Housing.....	2	3	3
0522	Spacer Spool.....	5	5	6
1222A	End Gang Washer.....	1	1	1
100099	Spacer Plate.....	1	1	1
100098	Bearing Plate.....	1	1	1
5622A	Lock Plate.....	1	1	1
10710	Carriage Screw 1/2 x 2 NC, PL.....	1	1	1
10395	Lock Nut 1/2 - NC, PL.....	1	1	1
10910	Roll Pin 5/16 x 2 1/4.....	1	1	1
10489	Nut Gang Bolt 1 1/2 NF.....	1	1	1
9577A	Nut Gang Bolt.....	1	1	1
10872	Flat Washer 1 3/8 PL.....	1	1	1
	Blades.....	-	-	-
3278	10 x 11 Ga. Plain Back-Up.....	1	1	1
3275	22 x 1/4 C.O.....	1	1	1
3276	22 x 1/4 PL.....	1	1	1
11571	24 x 1/4 C.O.....	7	8	9
3250	24 x 1/4 C.O.....	7	8	9
11572	24 x 1/4 PL.....	7	8	9
3255	24 x 1/4 PL.....	7	8	9

F7 REAR GANG & FRAMES

Part No.	Description	No. Req'd		
		34	38	42
20085	Assy. Gang Frame Rear - 74" Long.....	1	-	-
20079	Assy. Gang Frame Rear - 85" Long.....	-	1	-
20080	Assy. Gang Frame Rear - 93" Long.....	-	-	1
16012A	Bearing Riser.....	2	3	3
20062	Assy. Scraper Bar Support.....	1	-	-
100974	Shim.....	2	3	3
6513	"U" Bolt - 3/4 Dia.....	1	-	-
10300	Lock Nut 3/4 NC, PL.....	2	-	-
11280	"U" Bolt.....	2	3	3
10396	Lock Nut 7/8 NC, PL.....	4	6	6
101078	Scraper Bar 3 x 2 x 1/2 \angle 69 Long.....	1	-	-
101080	Scraper Bar 3 x 2 x 1/2 \angle 78 1/4 Long.....	-	1	-
101082	Scraper Bar 3 x 2 x 1/2 \angle 87 1/2 Long.....	-	-	1
11115	Carriage Screw 5/8 x 2 3/4 NC, PL, GR5.....	3	3	3
10059	Flat Washer 5/8 PL.....	2	3	3
10299	Lock Nut 5/8 NC, PL.....	3	3	3
9628	Clamp Trunion.....	4	6	6
20068	Assy. Scraper R.H.....	8	9	10
20069	Assy. Scraper L.H.....	8	9	10
10135	Carriage Screw 5/8 x 1 3/4 NC, PL, GR5.....	12	15	16
10059	Flat Washer 5/8 PL.....	9	12	13
10299	Lock Nut 5/8 NC, PL.....	14	18	19
9445	Gang Bolt 1 1/2" Sq. - 9 Blade.....	1	-	-
9446	Gang Bolt 1 1/2" Sq. - 10 Blade.....	-	1	-
9447	Gang Bolt 1 1/2" Sq. - 11 Blade.....	-	-	1
2404	Bumper Washer.....	1	1	1
17007	End Bell - Small.....	2	3	3
17008	End Bell - Large.....	2	3	3
FB-09-0015	Sub. Assy. (Bearing & Housing).....	2	3	3
0522	Spacer Spool.....	6	6	7
1222A	End Gang Washer.....	1	1	1
100099	Spacer Plate.....	1	1	1
100098	Bearing Plate.....	1	1	1
5622A	Lock Plate.....	1	1	1
10710	Carriage Screw 1/2 x 2 NC, PL.....	1	1	1
10395	Lock Nut 1/2 - NC, PL.....	1	1	1
10910	Roll Pin 5/16 x 2 1/4.....	1	1	1
10489	Nut Gang Bolt 1 1/2 NF.....	1	1	1
10226	Nut Gang Bolt 1 1/2 NF, Slotted.....	1	1	1
10872	Flat Washer 1 3/8 PL.....	1	1	1
	Blades.....	-	-	-
9482	18 x 8 Ga. PL.....	1	1	1
3275	22 x 1/4 C.O.....	1	1	1
3276	22 x 1/4 PL.....	1	1	1
11571	24 x 1/4 C.O.....	7	8	9
3250	24 x 1/4 C.O.....	7	8	9
11572	24 x 1/4 PL.....	7	8	9
3255	24 x 1/4 PL.....	7	8	9

J7 FRONT GANG & FRAMES

Part No.	Description	No. Req'd		
		30	34	38
20082	Assy. Gang Frame Front - 63" Long.....	1	-	-
20077	Assy. Gang Frame Front - 73" Long.....	-	1	-
20078	Assy. Gang Frame Front - 83" Long.....	-	-	1
16012A	Bearing Riser.....	2	3	3
20062	Assy. Scraper Bar Support.....	1	-	-
100974	Shim.....	2	3	3
6513	"U" Bolt 3/4 Dia.....	1	-	-
10300	Lock Nut 3/4 NC, PL.....	2	-	-
11280	"U" Bolt 7/8 Dia.....	2	3	3
10396	Lock Nut 7/8 NC, PL.....	5	7	7
101103	Scraper Bar 3 x 2 x 1/2 L - 58 15/16" Long.....	1	-	-
101104	Scraper Bar 3 x 2 x 1/2 L - 69 5/8" Long.....	-	1	-
101050	Scraper Bar 3 x 2 x 1/2 L - 80 5/16" Long.....	-	-	1
11115	Carriage Screw 5/8 x 2 3/4 NC, PL, GR5.....	3	3	3
10059	Flat Washer 5/8 PL.....	8	10	11
10299	Lock Nut 5/8 NC, PL.....	18	21	22
5638	Pivot Plate Upper.....	1	1	1
5636	Pivot Plate Lower.....	1	1	1
10130	Carriage Screw 5/8 x 5 NC, PL.....	5	5	5
10370	Carriage Screw 7/8 x 5 1/2 NC, PL.....	1	1	1
9628	Clamp Trunion.....	4	6	6
20068	Assy. Scraper - R.H.....	6	7	8
20069	Assy. Scraper - LH.....	6	7	8
10135	Carriage Screw 5/8 x 1 3/4 NC, PL, GR5.....	10	13	14
9444	Gang Bolt 1 1/2" Sq. - 7 Blade.....	1	-	-
9453	Gang Bolt 1 1/2" Sq. - 8 Blade.....	-	1	-
9454	Gang Bolt 1 1/2" Sq. - 9 Blade.....	-	-	1
9578A	Bumper Washer.....	1	1	1
17007	End Bell - Small.....	2	3	3
17006	End Bell - Large.....	2	3	3
FB-09-0015	Sub Assy. Bearing & Housing.....	2	3	3
0523	Spacer Spool.....	4	4	5
1222A	End Gang Washer.....	1	1	1
100099	Spacer Plate.....	1	1	1
100098	Bearing Plate.....	1	1	1
5622A	Lock Plate.....	1	1	1
10710	Carriage Screw 1/2 x 2 NC, PL.....	1	1	1
10395	Lock Nut 1/2 NC, PL.....	1	1	1
10910	Roll Pin 5/16 x 2 1/4.....	1	1	1
10489	Nut Gang Bolt 1 1/2 NF.....	1	1	1
9577A	Nut Gang Bolt.....	1	1	1
10872	Flat Washer 1 3/8" PL.....	1	1	1
	Blade.....	-	-	-
3278	10 x 11 Ga. Plain Back-Up.....	1	1	1
3275	22 x 1/4 C.O.....	1	1	1
3276	22 x 1/4 PL.....	1	1	1
11571	24 x 1/4 C.O.....	6	<u>7</u>	8
3250	24 x 1/4 C.O.....	6	7	8
11572	24 x 1/4 PL.....	6	7	8
3255	24 x 1/4 PL.....	6	7	8

J7 REAR GANG & FRAMES

Part No.	Description	No. Req'd		
		30	34	38
20085	Assy. Gang Frame - Rear - 74" Long.....	1	-	-
20079	Assy. Gang Frame - Rear - 80" Long.....	-	1	-
20081	Assy. Gang Frame - Rear - 96" Long.....	-	-	1
16012A	Bearing Riser.....	2	3	3
20062	Assy. Scraper Bar Support.....	1	-	-
100974	Shim.....	2	3	3
6513	"U" Bolt 3/4 Dia.....	1	-	-
10300	Lock Nut 3/4 NC, PL.....	2	-	-
11280	"U" Bolt 7/8 Dia.....	2	3	3
10396	Lock Nut 7/8 NC, PL.....	4	6	6
101104	Scraper Bar 3 x 2 x 1/2 L - 69 5/8" Long.....	1	-	-
101050	Scraper Bar 3 x 2 x 1/2 L - 80 5/16" Long.....	-	1	-
101051	Scraper Bar 3 x 2 x 1/2 L - 91" Long.....	-	-	1
11115	Carriage Screw 5/8 x 2 3/4 NC, PL, GR5.....	3	3	3
10059	Flat Washer 5/8 PL.....	9	11	12
10299	Lock Nut 5/8 NC, PL.....	14	17	18
20068	Assy. Scraper - RH.....	7	8	9
20069	Assy. Scraper - LH.....	7	8	9
10135	Carriage Screw 5/8 x 1 3/4 NC, PL, GR5.....	11	14	15
9453	Gang Bolt 1 1/2" Sq. - 8 Blade.....	1	-	-
9454	Gang Bolt 1 1/2" Sq. - 9 Blade.....	-	1	-
9455	Gang Bolt 1 1/2" Sq. - 10 Blade.....	-	-	1
9628	Clamp Trunion.....	4	6	6
2404	Bumper Washer.....	1	1	1
17007	End Bell - Small.....	2	3	3
17006	End Bell - Large.....	2	3	3
FB-09-0015	Sub Assy. Bearing & Housing.....	2	3	3
0523	Spacer Spool.....	5	5	6
1222A	End Gang Washer.....	1	1	1
100099	Spacer Plate.....	1	1	1
100098	Bearing Plate.....	1	1	1
5622A	Lock Plate.....	1	1	1
10710	Carriage Screw 1/2 x 2 NC, PL.....	1	1	1
10395	Lock Nut 1/2 - NC, PL.....	1	1	1
10910	Roll Pin 5/16 x 2 1/4.....	1	1	1
10489	Nut Gang Bolt 1 1/2 NF.....	1	1	1
10226	Nut Gang Bolt 1 1/2 NF Slotted.....	1	1	1
10872	Flat Washer 1 3/8 PL.....	1	1	1
	Blades.....			
9482	18 x 8 Ga. Plain.....	1	1	1
3275	22 x 1/4 C.O.....	1	1	1
3276	22 x 1/4 PL.....	1	1	1
11571	24 x 1/4 C.O.....	6	7	8
3250	24 x 1/4 C.O.....	6	7	8
11572	24 x 1/4 PL.....	6	7	8
3255	24 x 1/4 PL.....	6	7	8