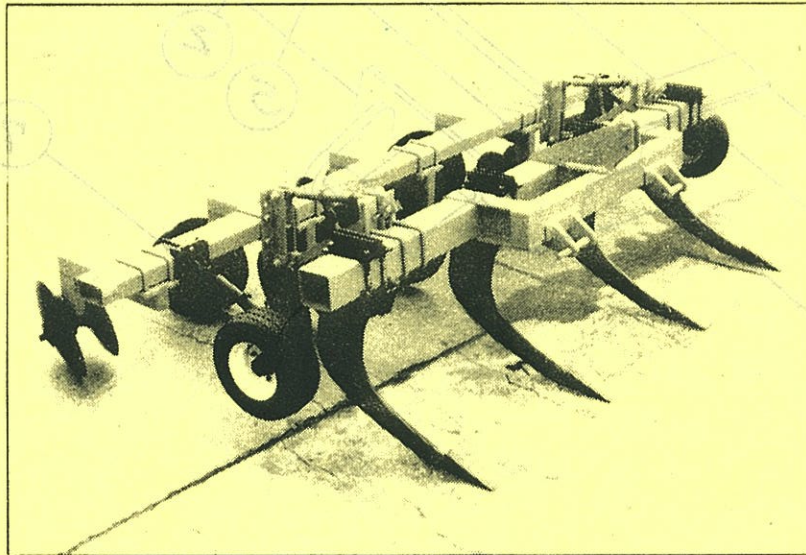


Amco

RIPPER HIPPER

PARTS CATALOG



RIPPER HIPPER & RIPPER

SHANK & MOUNT

Ref. No.	Part Number	Description	No. Required
1	102315	Shank 33"	1
2	12068	Shank Point 1" X 2"	1
3	11937	Roll Pin 3/8 X 2 lg.	1
4	10727	3/4 X 3 NC, PLT, GR5 Hex Bolt	1
5	10300	3/4" NC, PLT Lock Nut G.B.	1
6	10201	5/8 X 3 NC, PLT, Gr5 Hex Bolt	2
7	11647	5/8" NC, PLT, Flange Lock Nut	1
8	11691	7/8" NC, PLT, Flange Lock Nut	4
9	12082	7/8 X 9 NC, PLT, Gr5 Hex Bolt	4
10	101984	Top Strap 3X3X $\frac{1}{2}$ Angle 9-7/8 lg. (102416)	2
11	20547	Mount Assembly - RH	1
12	20548	Mount Assembly - LH	1
13	10299	5/8" NC, PLT Lock Nut	1
14	102417	Bushing 1/2" Std. Pipe 1" Lg.	1

12068

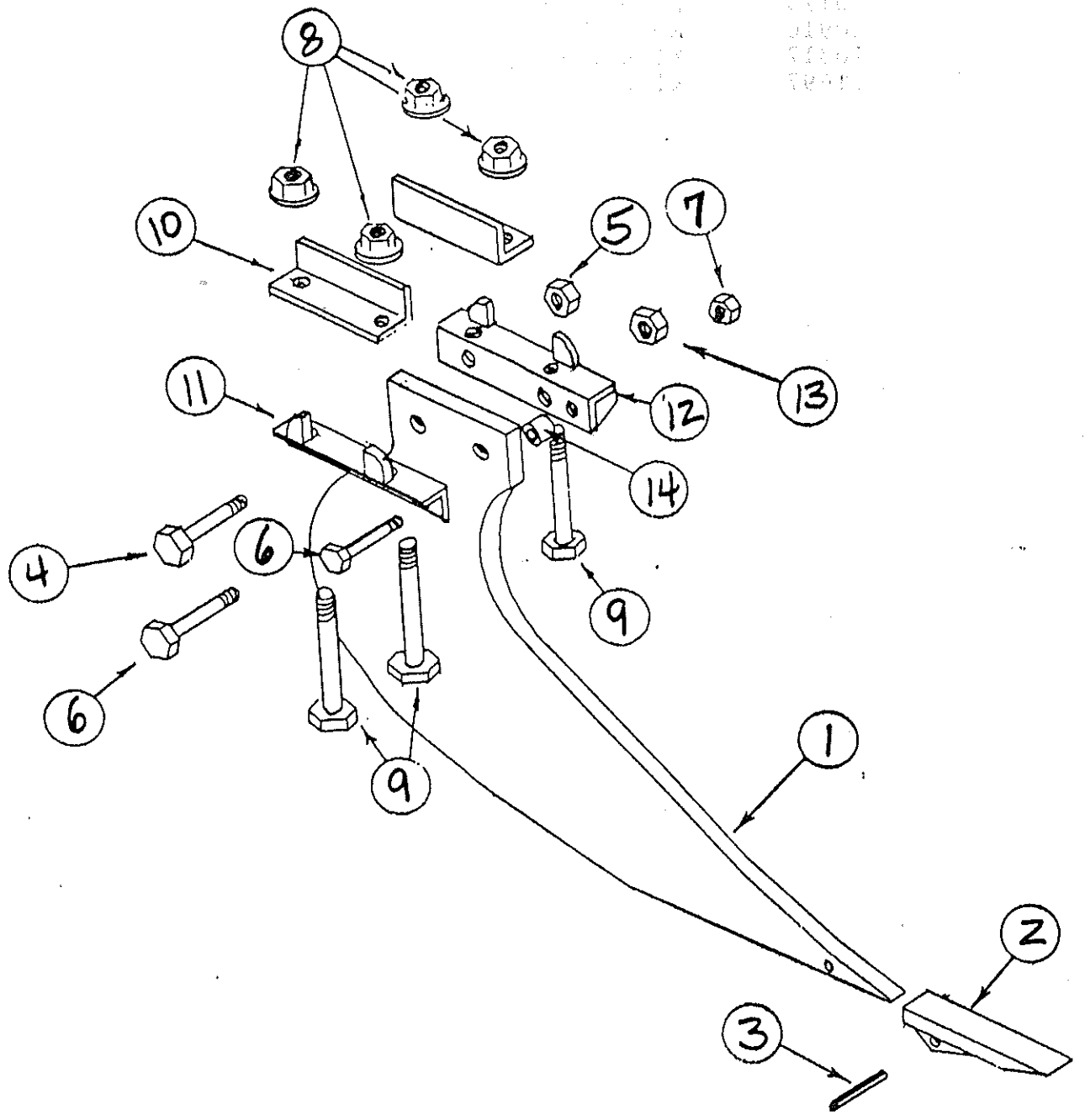


Cut 1/4" from End

<p>DESCRIPTION 1" x 2" x 11" FOR 3/8" x 2" ROLL PIN WEIGHT: 5.105 6 lbs. 8 oz. Plain Capped</p>	
---	--

SUBSOILER POINTS

BOOTED



RIPPER HIPPER & RIPPER

SHANK & MOUNT

Ref. No.	Part Number	Description	No. Required
1	102315	Shank 33"	1
2	12068	Shank Point 1" X 2"	1
3	11937	Roll Pin 3/8 X 2 lg.	1
4	10727	3/4 X 3 NC, PLT, GR5 Hex Bolt	1
5	10300	3/4" NC, PLT Lock Nut G.B.	1
6	10201	5/8 X 3 NC, PLT, Gr5 Hex Bolt	2
7	11647	5/8" NC, PLT, Flange Lock Nut	1
8	11691	7/8" NC, PLT, Flange Lock Nut	4
9	12082	7/8 X 9 NC, PLT, Gr5 Hex Bolt	4
10	101984	Top Strap 3X3X½ Angle, 9-7/8 lg. (102416).	2
11	20547	Mount Assembly - RH	1
12	20548	Mount Assembly - LH	1
13	10299	5/8" NC, PLT Lock Nut	1
14	102417	Bushing 1/2" Std. Pipe 1" Lg.	1

12068



<p>DESCRIPTION 1" x 2" x 11" FOR 3/8" x 2" ROLL PIN WEIGHT: 2.155 6.66.802. Plain Capped</p>	
---	--

SUBSOILER POINTS

BOOTED

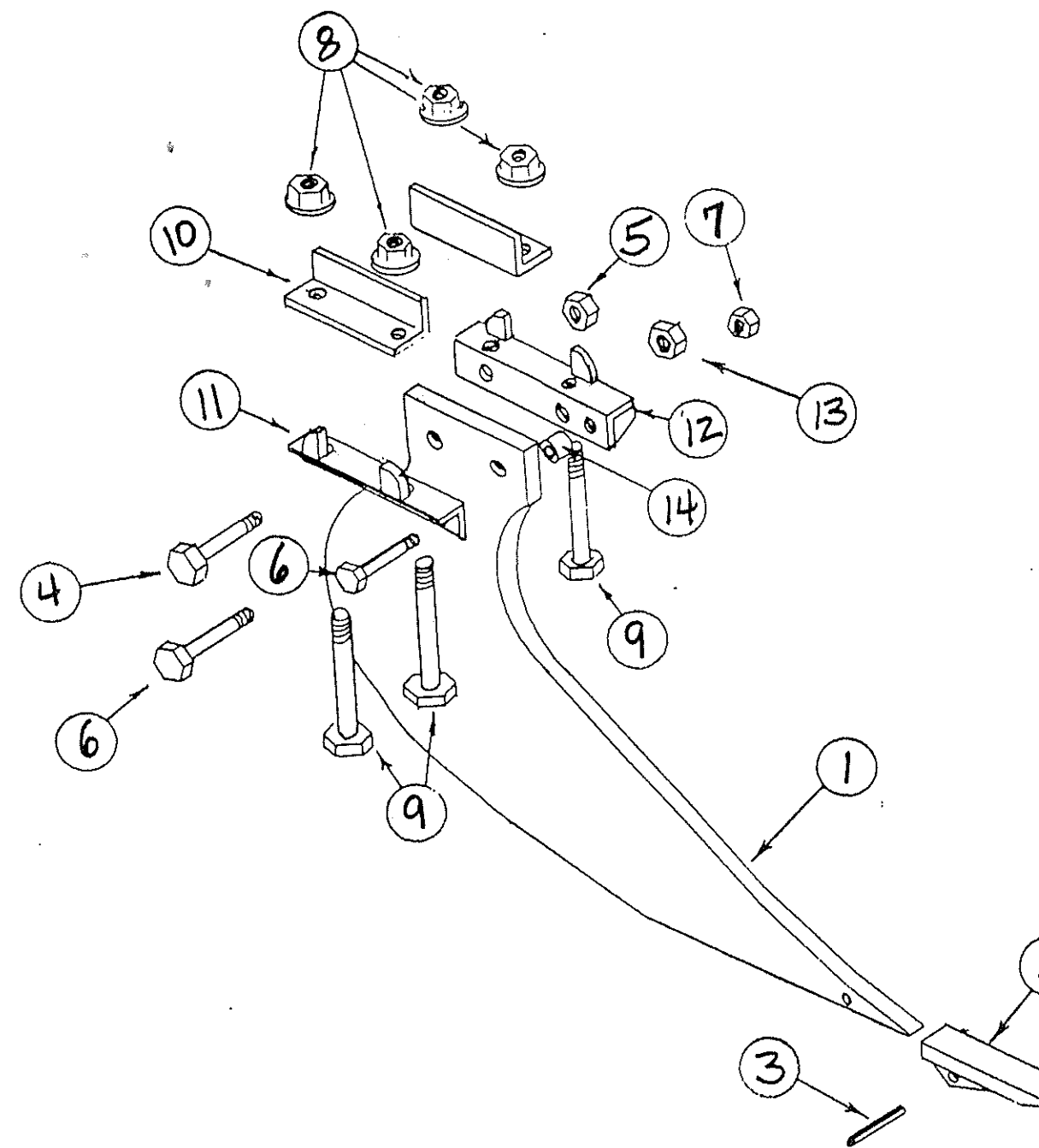
MAIN FRAME RIPPER HIPPER

Ref. No.	Part Number	Description	R4-3 RH4-3	R6-3 RH6-3	R6-1 RH6-1	R6-2 RH6-2
1	20506	Main Frame	1			
1	20507	Main Frame		1		
1	20508	Main Frame			1	
1	20509	Main Frame				1
2	100569	Upper Hitch Pin	1	1	1	1
3	6570	Bushing	1	1	1	1
4	101739	Lower Hitch Pin	2	2	2	2
5	10910	Roll Pin 5/16 X 2½	1	1	1	1
6	10317	Klik Pin 1/4 Dia.	1	1	1	1
7	11697	Klik Pin 7/16 Dia.	2	2	2	2

RIPPER HIPPER & RIPPER

SHANK & MOUNT

Ref. No.	Part Number	Description	No. Required
1	102315	Shank 33"	1
2	12068	Shank Point 1" X 2".....	1
3	11937	Roll Pin 3/8 X 2 lg.....	1
4	10727	3/4 X 3 NC,PLT,GR5 Hex Bolt	1
5	10300	3/4" NC,PLT Lock Nut G.B.....	1
6	10201	5/8 X 3 NC,PLT, Gr5 Hex Bolt	2
7	11647	5/8" NC, PLT, Flange Lock Nut	1
8	11691	7/8" NC,PLT, Flange Lock Nut	4
9	12082	7/8 X 9 NC,PLT,Gr5 Hex Bolt	4
10	101984	Top Strap 3X3X½ Angle 9-7/8 lg.(102416) .	2
11	20547	Mount Assembly - RH	1
12	20548	Mount Assembly - LH	1
13	10299	5/8" NC,PLT Lock Nut	1
14	102417	Bushing 1/2" Std. Pipe 1" Lg.....	1

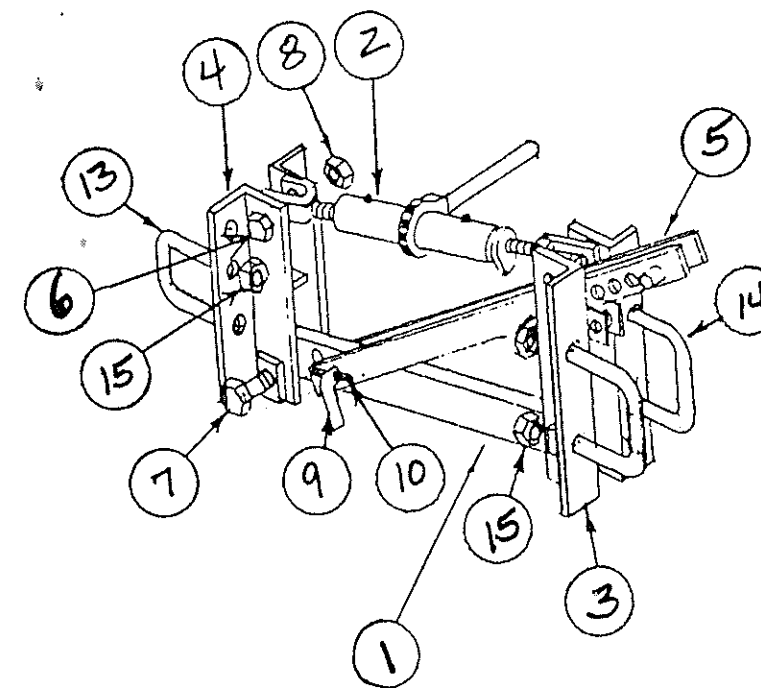


RIPPER HIPPER

Linkage 7 X 7 to 7 X 4

Ref. No.	Part Number	Description	No. Required			
			R4-3 RH4-3	R6-3 RH6-3	R6-1 RH6-1	R6-2 RH6-2
1	20513	Lower Link Bar	1	1	1	1
2	11494	Ratchet Jack	1	1	1	1
3	20511	Front Linkage Mount	1	1	1	1
4	20512	Rear Linkage Mount	1	1	1	1
5	20514	Adjusting Bar	1	1	1	1
6	10228	1X4½NC,PLT Hex Bolt	2	2	2	2
7	10253	1X5½NC,PLT Hex Bolt	2	2	2	2
8	10868	1" NC,PLT Lock Nut	4	4	4	4
9	102314	Lock Pin 3/4 Dia.	2	2	2	2
10	10910	Roll Pin 5/16 X2½	2	2	2	2
*11	10317	Klik Pin ½" Dia.	1	1	1	1
*12	10803	Hair Pin Clip	1	1	1	1
13	11495	U Bolt 7X4	2	2	2	2
14	11399	U Bolt 7X7	2	2	2	2
15	10396	7/8"NC,PLT Lock Nut	8	8	8	8

*Not Shown on Parts Breakdown

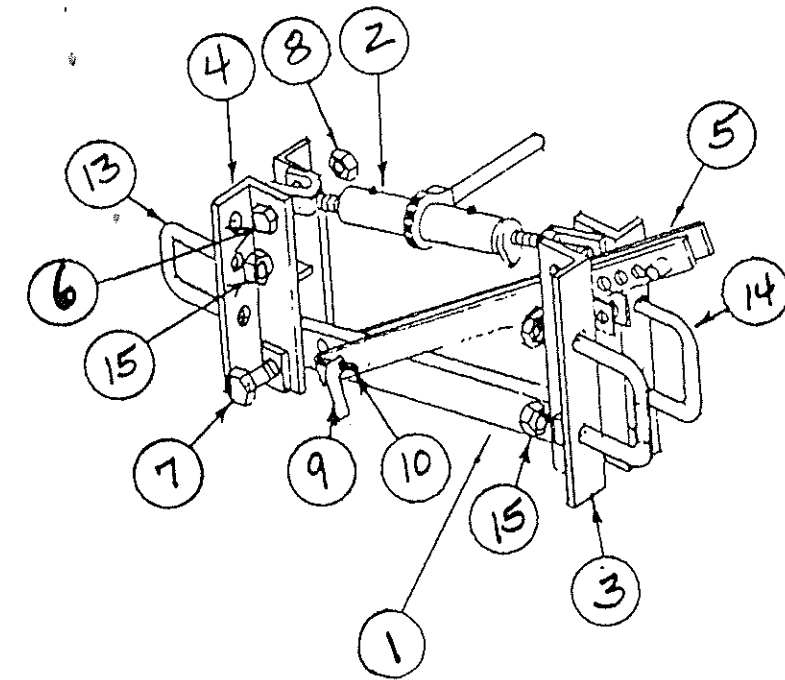


RIPPER HIPPER

Linkage 7 X 7 to 7 X 7

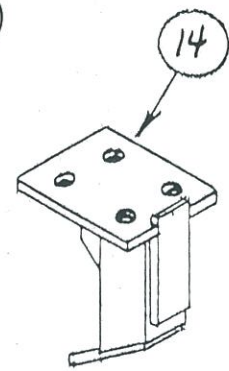
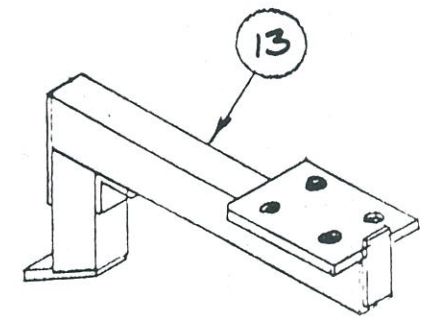
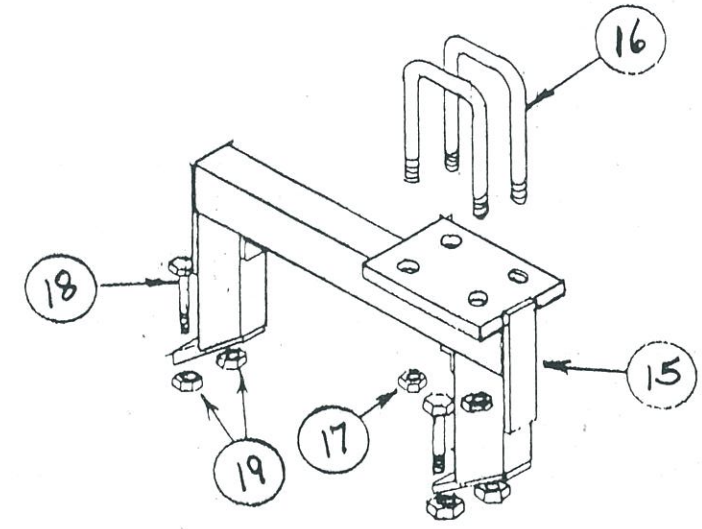
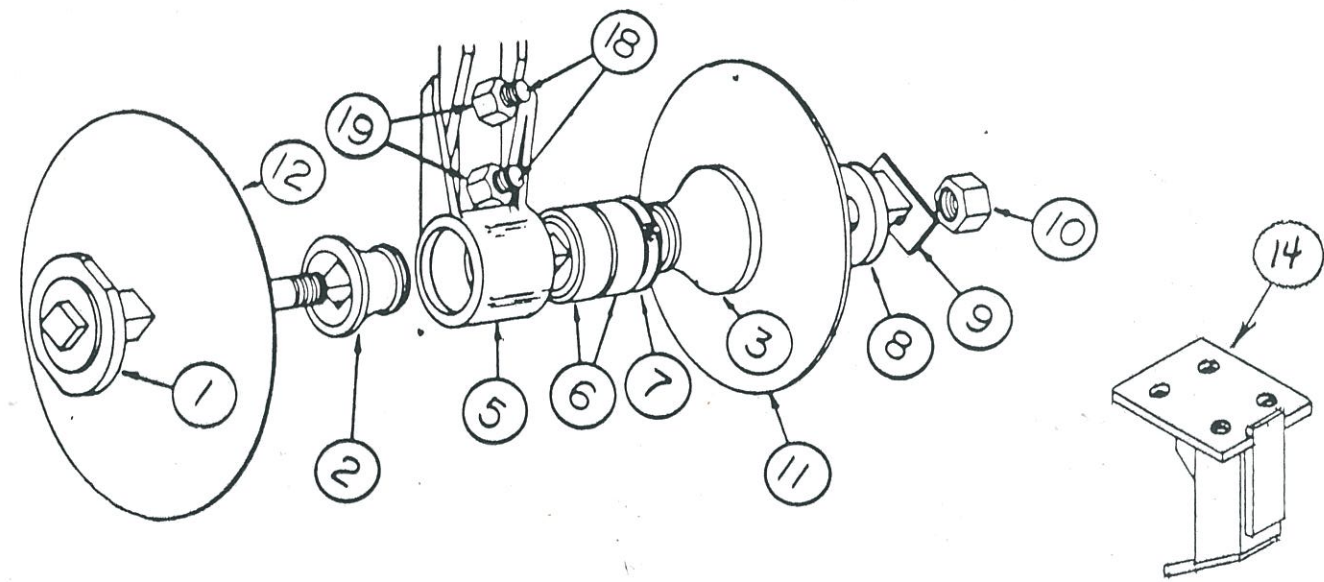
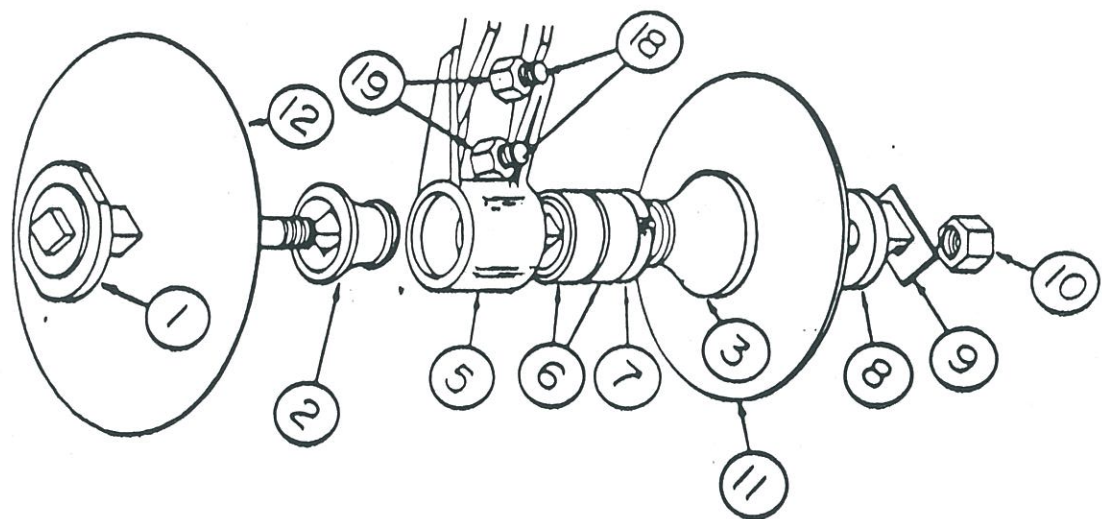
Ref. No.	Part Number	Description	No. Required			
			R4-3 RH4-3	R6-3 RH6-3	R6-1 RH6-1	R6-2 RH6-2
1	20513	Lower Link Bar	1	1	1	1
2	11494	Ratchet Jack	1	1	1	1
3	20511	Front Linkage Mount	1	1	1	1
4	20512	Rear Linkage Mount	1	1	1	1
5	20514	Adjusting Bar	1	1	1	1
6	10228	1X4½NC,PLT Hex Bolt	2	2	2	2
7	10253	1X5½NC,PLT Hex Bolt	2	2	2	2
8	10868	1" NC,PLT Lock Nut	4	4	4	4
9	102314	Lock Pin 3/4 Dia.	2	2	2	2
10	10910	Roll Pin 5/16 X2½	2	2	2	2
*11	10317	Klik Pin ½" Dia.	1	1	1	1
*12	10803	Hair Pin Clip	1	1	1	1
13	11495	U Bolt	0	0	0	0
14	11399	U Bolt	4	4	4	4
15	10396	7/8"NC,PLT Lock Nut	8	8	8	8

* Not Shown on Parts Breakdown



INSERT
 BEDDING HIPPER GANGS - 1-1/2" Square
 HEAVY DUTY

Ref. No.	Part No.	Description	No. Req'd
1	20561	Assy. Axle	1
2	17027	End Bell - Small	1
3	9902	End Bell - Large	1
4	FB-09-0024	Sub Assy. Bearing	1
5	17028A	Brg. Hsg.	1
6	G-11071	Bearing	2
7	11064	Snap Ring	1
8	1222A	End Gang Washer	1
9	5622A	Lock Plate	1
	100098	Bearing Plate (Not Shown).....	1
	100099	Spacer Plate (Not Shown).....	1
	10710	Carriage Bolt 1/2 X 2 Gr5 (Not Shown).....	1
	10395	1/2" NC Lock Nut (Not Shown)	1
10	10489	1-1/2 NF Hex Nut	1
11	11588	20" X 1/4 Pl. (Standard)	1
12	3276	22 X 1/4 Pl. (Standard)	1
	11589	20" X 1/4 C.O. (Optional)	1
	3275	22" X 1/4 C.O. (Optional)	1
	3255	24" X 1/4 Pl. (Optional)	1
	3250	24 X 1/4 C.O. (Optional)	1
18	12076	5/8 X 2-3/4 NC Pit. Grade 8	2
19	10299	Lock Nut 5/8 NC PL	2
20	12156	1/4"-28 Thds Self Tapping Grease Fitting(Not Shown)	2

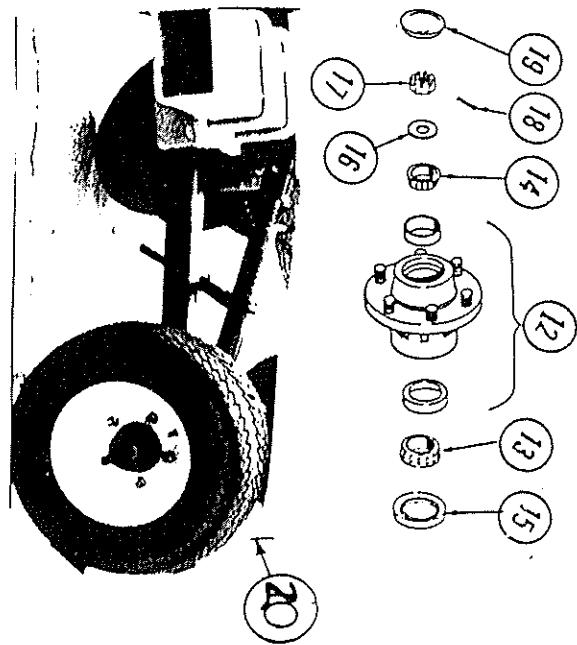
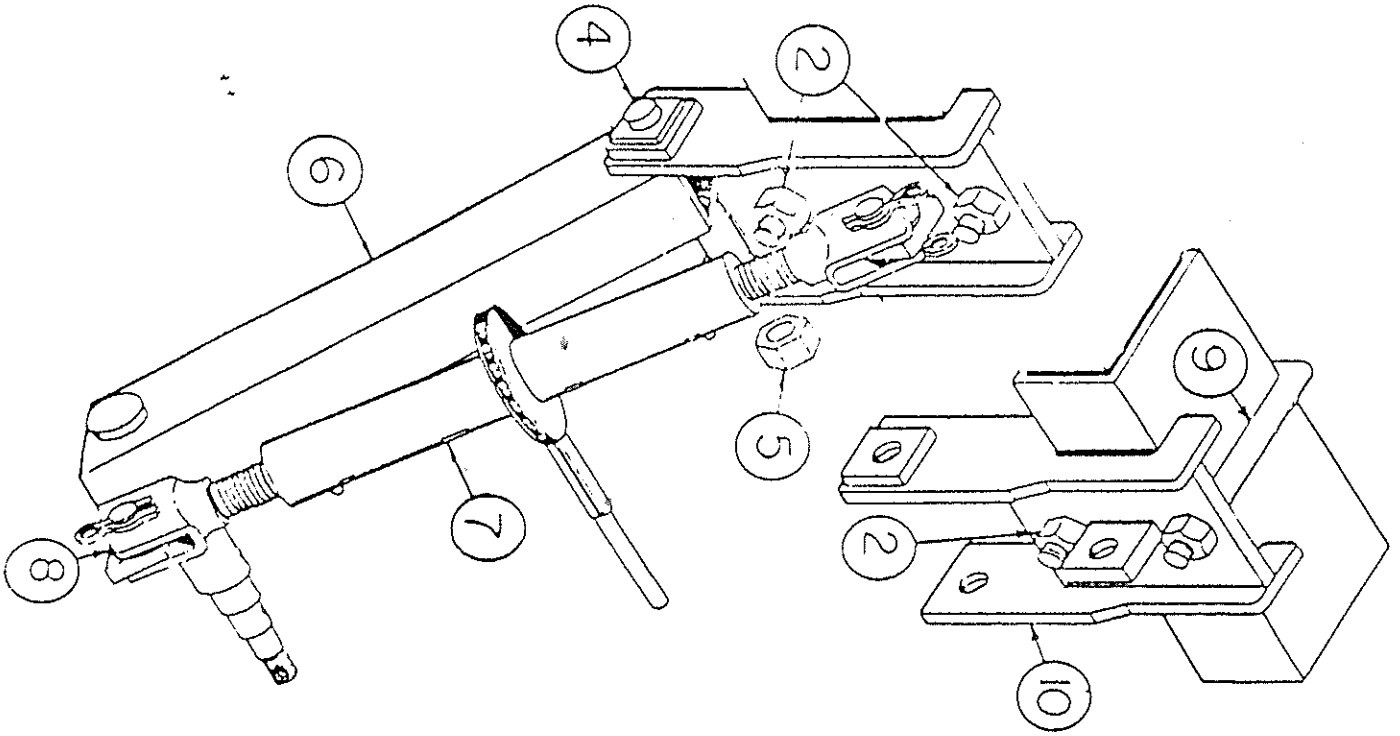


RIPPER HIPPER

Ref. No.	Part Number	Description	No. Req'd
1	0705	Assy. Axle	1
2	3180	End Bell - Small	1
3	3181	End Bell - Large	1
4	FB-09-0020	Sub. Assy. Bearing	1
5	3416	Bearing Housing	1
6	11078	Bearing	2
7	11005	Snap Ring	1
8	2030	End Gang Washer	1
9	2116	Lock Plate	1
10	11035	Nut Gang Bolt 1-1/8 NC,HVY	1
11	3269	Blade 22" X 7 Ga. Pl.-Std.....	1
12	3262	Blade 20" X 7 Ga. Pl.-Std.....	1

RIPPER HIPPER

Ref. No.	Part Number	Description	No. Req'd
13	20537	Assy. Gang Frame-Long	1
14	20538	Assy. Gang Frame-Short.....	1
15	20536	Assy. Gang Frame-(Dual).....	1
16	9560	"U" Bolt 7/8 Dia.-4 X 7 Bar	2
16	11399	"U" Bolt 7/8 Dia.-7 X 7 Bar (Shown)...	2
17	11691	Flange Lock Nut 7/8 NC, PL.....	4
18	10674	Hex Screw 5/8 X 2 1/2 NC,PL,Gr5	2
19	10299	Lock Nut 5/8 NC,PL	2

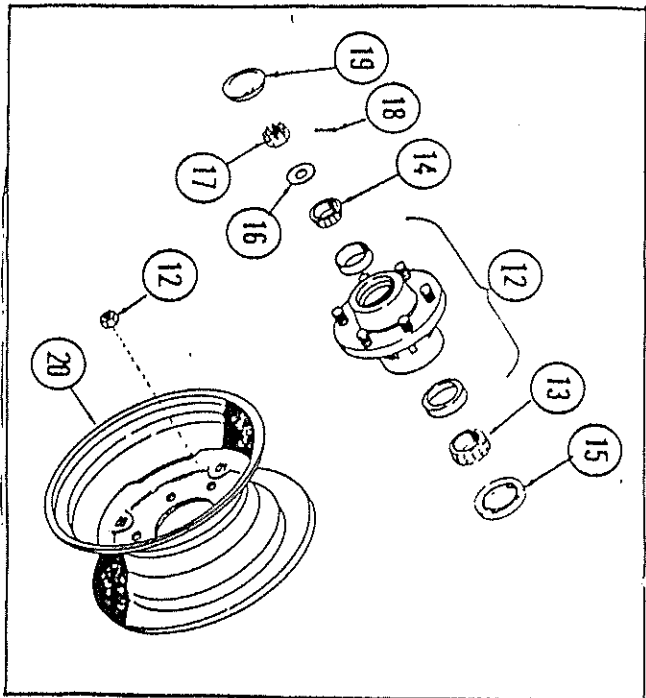
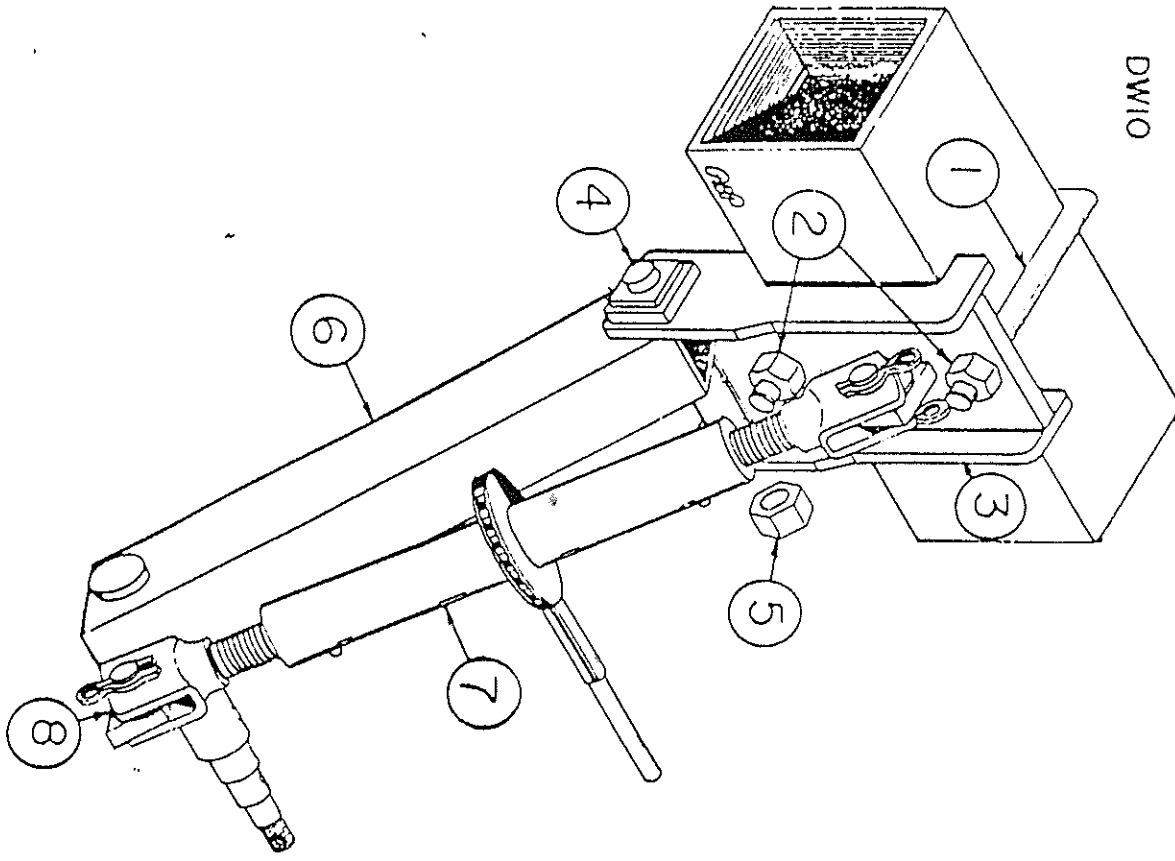


DW-13
 AMCO Depth Gauge Wheels - Hipper
 (Optional)

Ref. No.	Part Number	Description	No. Req'd
1	11399	"U" Bolt 7/8 Dia.-7 X 7 Bar	1
2	10396	Lock Nut 7/8 NC, PL	2
4	20123	Assy. Pivot Pin	1
5	10868	Lock Nut 1" NC, PL	1
6	20124	* Assy. Depth Ga. Leg RH of LH	1
7	11494	Ratcheting Jack	1
8	10879	Flat Washer 1" USS, PL	4
9	11495	"U" Bolt 7/8 Dia.-4" X 7" BAR	1
10	0993	Assy. Bottom Bracket-4" X 7" Bar	1
11	11396	Pin Assy. 1" Dia. X 2-7/8" (W/2 Hair Pin Clips)	2
12	10351	Hub - F & H #104682	1
13	10353	Cone - Inner Timken #LM48548	1
14	10295	Cone - Outer Timken #LM67048	1
15	11017	Grease Seal C/R #17618	1
16	10263	Spindle Washer 7/8	1
17	10264	Spindle Nut 7/8 NF	1
18	10291	Cotter Pin 5/32 X 1-1/4	1
19	10356	Hub Cap	1
20	DB-05-0002	Wheel & Tire Assembly	1

NOTE: Parts listed above compose (1) depth gauge.

DW10



DW-10
 AMCO Depth Gauge Wheels - Ripper
 (Optional)

Ref. No.	Part Number	Description	No. Req'd
1	11399	"U" Bolt 7/8 Dia.-7"X 7"Bar	1
2	10396	Lock Nut 7/8 NC, PL	2
3	0973	Assy. Bottom Bracket - 7"X 7"Bar	1
4	20123	Assy. Pivot Pin	1
5	10868	* Lock Nut 1" NC, PL	1
6	20124	Assy. Depth Ga. Leg RH or LH	1
7	11494	Ratcheting Jack	1
8	10879	Flat Washer 1" USS, PL	4
11	11396	Pin Assy. 1" Dia. X 2-7/8" (W/2 Hair Pin Clips)	2
12	11644	Hub - (F & H #106675)	1
13	10353	Cone - Inner Timken #LM48548	1
14	10295	Cone - Outer Timken #LM67048	1
15	11017	Grease Seal C/R #17618	1
16	10263	Spindle Washer 7/8	1
17	10264	Spindle Nut 7/8 NF	1
18	10291	Cotter Pin 5/32 X 1-1/4	1
19	10356	Hub Cap	1
20	10265	Wheel 15 X 6 - 6 Hole EWC #0411141	1

NOTE: Parts listed above compose one (1) depth gauge.