



ROLLIN' BUSTER RB6-3

PARTS LIST

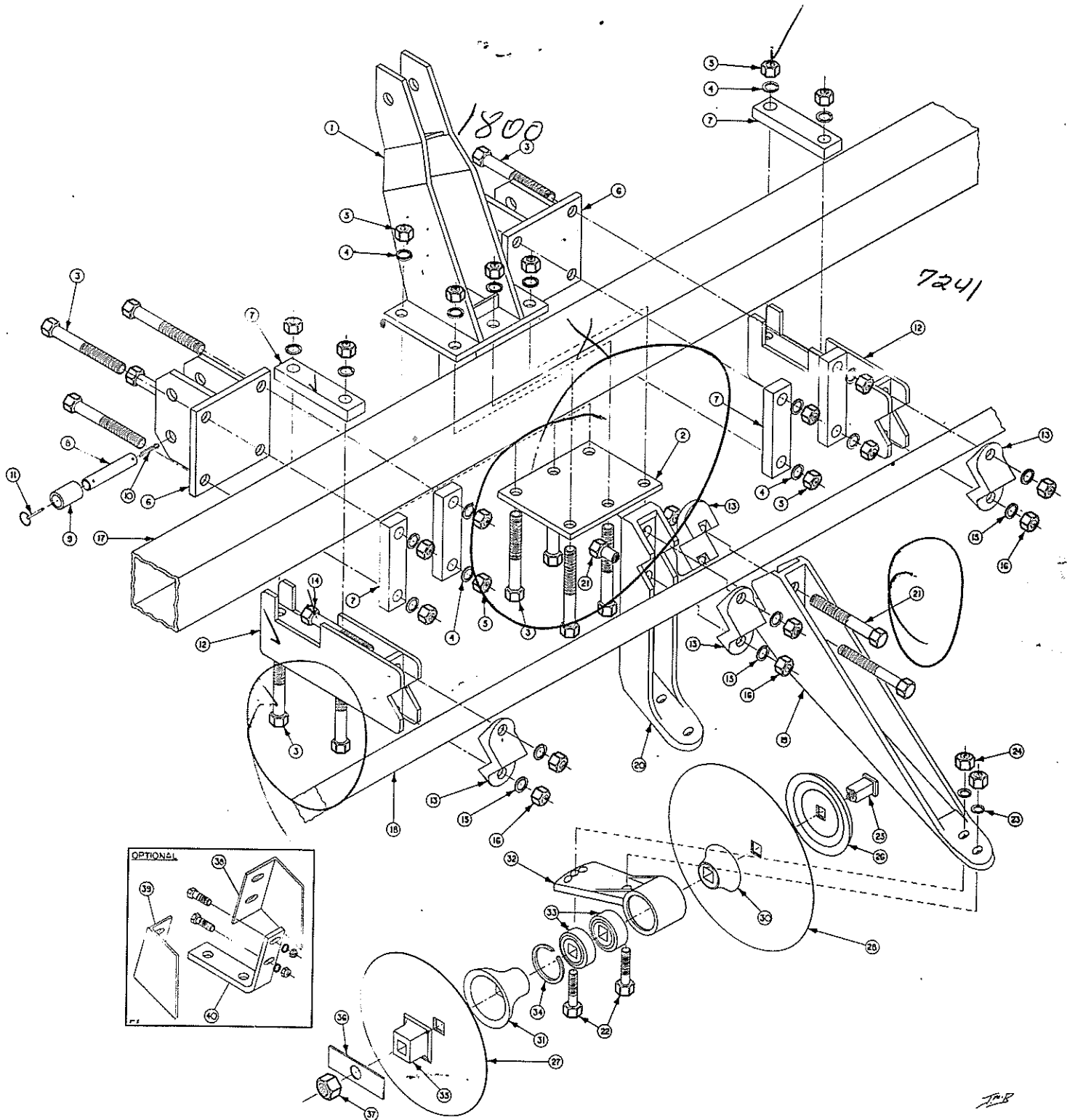
Ref. No.	Description	Part No.	No. Req.
1	TOP LINK CONNECTING	1800	1
2	BASE-TOOL BAR CLAMP	7452	1
3	MACHINE BOLT 7/8 x 7 1/2 NC (P)	10739	22
4	LOCK WASHER 7/8	10391	22
5	HEX NUT 7/8 NC (P)	10072	22
6	LOWER LINK	1801	2
7	STRAP BRACKET	7245	4
8	HITCH PIN	7646	2
9	BUSHING	6569	2
10	COTTER PIN 1/4 x 1 1/2	10075	2
11	KLIK PIN 1/4	10317	2
12	TOOL BAR SPACER	1802	4
13	CLAMP CAP	3427	4
14	MACHINE BOLT 7/8 x 5 NC (P)	10592	8
15	LOCK WASHER 7/8 (P)	10391	8
16	HEX NUT 7/8 NC (P)	10436	8
17	MAIN FRAME	1912	1
18	TOOL BAR 2 1/2" Sq. 258" Lg.	5504	1
19	GANG FRAME - Long	3432	7
20	GANG FRAME. - Short	3433	5
13	CLAMP CAP	3427	12
21	MACHINE BOLT 7/8 x 6 NC (P)	10591	24
15	LOCK WASHER 7/8 (Plated)	10391	24
16	HEX NUT 7/8 NC (Plated)	10436	24
22	MACHINE BOLT 5/8 x 3 NC	10039	24
23	LOCK WASHER 5/8	10010	24
24	HEX NUT 5/8 NC	11029	24
25	GANG BOLT	3467	12
26	BUMPER WASHER	3412	12
27	BLADE 16" Plain	3267	12
28	BLADE 18" Plain	3268	12
30	END BELL - Small	3180	12
31	END BELL - Large	3181	12
32	BEARING HOUSING	3416	12
33	BEARING (W210PP4 FS-282)	10446	24
34	RETAINER RING	11005	12
35	END GANG WASHER	2030	12
36	LOCK PLATE	2116	12
37	NUT-HEX 1-1/8" NC Hvy. - Optional -	11035	12
38	SCRAPER RH	7025	
39	SCRAPER LH	7026	
40	SCRAPER SHANK	7027	

MIJO

ALEXANDER MANUFACTURING COMPANY

AMCO

ROLLIN' BUSTER PARTS - RB6-3



MIJO

568

ALEXANDER MANUFACTURING COMPANY

POST OFFICE BOX 107

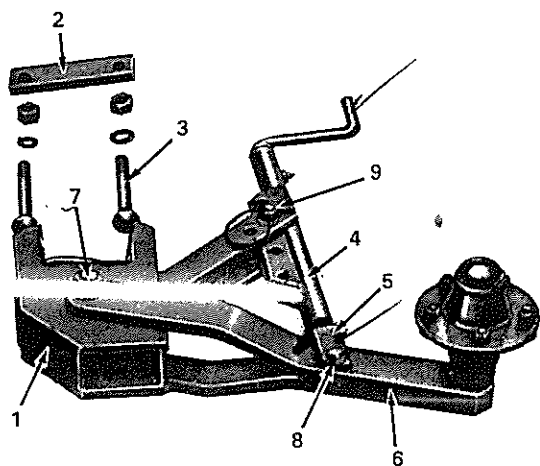
PHONE (601) 746-4464

YAZOO CITY, MISS. 39194



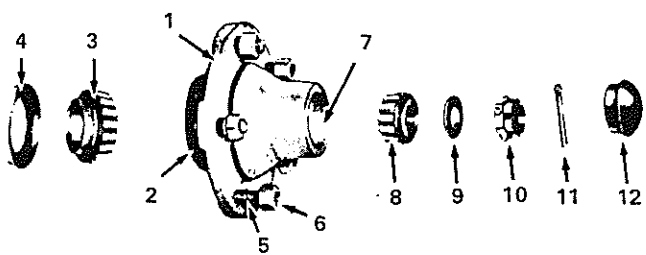
ROLLIN' BUSTER PARTS - RB6-3

DW8 DEPTH GAUGE



Ref. No.	Description	Part No.	No. Req.
1	Depth Gauge Bracket	1718	2
2	Clamp Bracket	7245	2
3	Carriage Bolt $\frac{7}{8}$ " x $7\frac{1}{2}$ " NC	10699	4
	Lock Washer $\frac{7}{8}$ "	10035	4
	Hex Nut $\frac{7}{8}$ " NC	10148	4
4	Adjusting Guide Sleeve	A179	2
5	Adjusting Spindle Leg	A180	2
6	Spindle Leg	A181	2
	Bushing	7057	4
7	Cap Screw 1" x $6\frac{1}{2}$ " NC	10304	2
	Cut Washer 1"	10090	2
	Lock Washer 1"		-
	Hex Nut 1" NC	11026	2
8	Cap Screw $\frac{1}{2}$ " x $2\frac{3}{4}$ " NC	10597	2
	Lock Washer $\frac{1}{2}$ "	10098	2
	Hex Nut $\frac{1}{2}$ " NC	10178	2
9	Machine Bolt $\frac{3}{4}$ " x $3\frac{1}{2}$ " NC	10047	2
	Lock Washer $\frac{3}{4}$ "	10002	2
	Hex Nut $\frac{3}{4}$ " NC	10143	2

1155



HUB PARTS

Ref. No.	Description	Part No.	No. Req.
1	Hub w/2 Cups and 5 Lug Bolts	10581	2
2	Cup Inner	10352	2
3	Cone Inner	10353	2
4	Grease Seal	10582	2
5	Hub Bolt	10354	10
6	Hub Nut	11046	10
7	Cup Outer	10293	2
8	Cone Outer	10295	2
9	Spindle Washer	10263	2
10	Spindle Nut	10264	2
11	Cotter Pin	10291	2
12	Hub Cap	10356	2
	Wheel 14" Drop Center	10385	2