

Ref. No.	Description	Model WOF3		Model WOF3		Model WOF3		Model WOF3		Model WOF3		Model WOF3	
		Part No.	Req.	Part No.	Req.	Part No.	Req.	Part No.	Req.	Part No.	Req.	Part No.	Req.
1	Hitch Swivel	1332	1	1332	1	1332	1	1332	1	1332	1	1332	1
2	Collar	5967	1	5967	1	5967	1	5967	1	5967	1	5967	1
3	Cap Screw - Hex Hd. - 5/8" x 3 3/4" USS	10241	1	10241	1	10241	1	10241	1	10241	1	10241	1
3	Lock Washer - 5/8"	10010	1	10010	1	10010	1	10010	1	10010	1	10010	1
3	Nut - Hex - 5/8" USS	11029	1	11029	1	11029	1	11029	1	11029	1	11029	1
3	Pull Tongue	1333	1	1333	1	1333	1	1333	1	1333	1	1333	1
4	Adj. Plate	2996	2	2996	2	2996	2	2996	2	2996	2	2996	2
4	Machine Bolt - Sq. Hd. - 3/4" x 5 1/2" USS	10323	3	10323	3	10323	3	10323	3	10323	3	10323	3
4	Lock Washer - 3/4"	10002	3	10002	3	10002	3	10002	3	10002	3	10002	3
4	Nut Hex - 3/4" USS	10143	3	10143	3	10143	3	10143	3	10143	3	10143	3
5	Machine Bolt - Hex Hd. - 1" x 5 1/2" USS	10253	1	10253	1	10253	1	10253	1	10253	1	10253	1
5	Lock Washer - 1"	11027	1	11027	1	11027	1	11027	1	11027	1	11027	1
5	Nut Hex - 1" USS	11026	1	11026	1	11026	1	11026	1	11026	1	11026	1
5	Cross Tongue	868	1	868	1	868	1	868	1	868	1	868	1
5	Cap Screw - Hex Hd. - 1" x 4" USS	10094	2	10094	2	10094	2	10094	2	10094	2	10094	2
5	Lock Washer - 1"	11027	2	11027	2	11027	2	11027	2	11027	2	11027	2
6	Nut Hex - 1" USS	11026	2	11026	2	11026	2	11026	2	11026	2	11026	2
6	Hose Holder	771	1	771	1	771	1	771	1	771	1	771	1
7	Cotter Pin - 1/4" x 1 1/2"	10075	1	10075	1	10075	1	10075	1	10075	1	10075	1
7	Stabilizer Rod	3008	1	3008	1	3008	1	3008	1	3008	1	3008	1
7	Cotter Pin - 1/2" x 1 1/2"	10075	1	10075	1	10075	1	10075	1	10075	1	10075	1
7	Machine Bolt - Hex Hd. - 5/8" x 3 3/4"	10241	1	10241	1	10241	1	10241	1	10241	1	10241	1
7	Lock Washer - 5/8"	10010	1	10010	1	10010	1	10010	1	10010	1	10010	1
8	Nut - Hex - 5/8" USS	11029	1	11029	1	11029	1	11029	1	11029	1	11029	1
8	Stabilizer Spring-2"-1. D. x 3"-O. D.-6"-Long	10308	1	10308	1	10308	1	10308	1	10308	1	10308	1
9	Spring Guide Sleeve	773	1	773	1	773	1	773	1	773	1	773	1
10	Trunnion Stabilizer	774	1	774	1	774	1	774	1	774	1	774	1
10	Machine Bolt - Hex Hd. - 5/8" x 1 1/2" (Plated)	10188	2	10188	2	10188	2	10188	2	10188	2	10188	2
10	Lock Washer - 5/8" (Plated)	11002	2	11002	2	11002	2	11002	2	11002	2	11002	2
10	Nut Hex - 5/8" USS (Plated)	10139	2	10139	2	10139	2	10139	2	10139	2	10139	2
11	Stop Stabilizer	775	1	775	1	775	1	775	1	775	1	775	1
11	Nut Adj. Stabilizer	776	1	776	1	776	1	776	1	776	1	776	1
12	Stabilizer Control	873	1	873	1	873	1	873	1	873	1	873	1
12	Stabilizer Control Pin	874	1	874	1	874	1	874	1	874	1	874	1
13	Cotter Pin - 1/4" x 2"	10087	1	10087	1	10087	1	10087	1	10087	1	10087	1
13	Turn Buckle Stud. - RH	875	1	875	1	875	1	875	1	875	1	875	1
14	Turn Buckle Stud. - LH	876	1	876	1	876	1	876	1	876	1	876	1
14	Turn Buckle Housing	877	1	877	1	877	1	877	1	877	1	877	1
14	Turn Buckle Pin	878	2	878	2	878	2	878	2	878	2	878	2
15	Cotter Pin - 1/4" x 2"	10087	4	10087	4	10087	4	10087	4	10087	4	10087	4
15	Main Frame	944	1	944	1	944	1	944	1	944	1	944	1
16	Leveling Arm	872	1	872	1	872	1	872	1	872	1	872	1
16	Rivet - 1" x 3"	10099	1	10099	1	10099	1	10099	1	10099	1	10099	1
16	Cotter Pin - 1/4" x 2"	10087	2	10087	2	10087	2	10087	2	10087	2	10087	2
17	Front Gang Frame	870	1	870	1	870	1	870	1	870	1	870	1
17	Scrapper Standard - RH	945	10	945	10	945	10	945	10	945	10	945	10
17	Scrapper End Special - RH	946	1	946	1	946	1	946	1	946	1	946	1
18	Rear Gang Frame	779	1	779	1	779	1	779	1	779	1	779	1
18	Scrapper Standard - LH	947	10	947	10	947	10	947	10	947	10	947	10
18	Scrapper End Special - LH	948	1	948	1	948	1	948	1	948	1	948	1
18	Carriage Bolt W/Nut - 7/16" x 1 1/2" USS	10068	44	10068	44	10068	44	10068	44	10068	44	10068	44
19	Lock Washer - 7/16"	10619	44	10619	44	10619	44	10619	44	10619	44	10619	44
19	Gang Pivot Bolt	11021	2	11021	2	11021	2	11021	2	11021	2	11021	2
19	Cut Washer - 1 1/4"	10077	4	10077	4	10077	4	10077	4	10077	4	10077	4
19	Nut - Hex (Slotted) 1 1/4"	10076	2	10076	2	10076	2	10076	2	10076	2	10076	2
19	Cotter Pin - 1/4" x 3"	10617	2	10617	2	10617	2	10617	2	10617	2	10617	2
20	"J" Bolt	2542	4	2542	4	2542	4	2542	4	2542	4	2542	4
20	Carriage Bolt - 1" x 2 1/2" USS	10318	4	10318	4	10318	4	10318	4	10318	4	10318	4
20	Lock Washer - 1"	11027	8	11027	8	11027	8	11027	8	11027	8	11027	8
21	Nut - Hex - 1" USS	11026	8	11026	8	11026	8	11026	8	11026	8	11026	8
21	Rockshaft	1332	1	1332	1	1332	1	1332	1	1332	1	1332	1

**TYPE - WOF3**  
**Rigid Frame**  
**Wheel Type Offset**

**PARTS LIST - Rigid Frame Wheel**

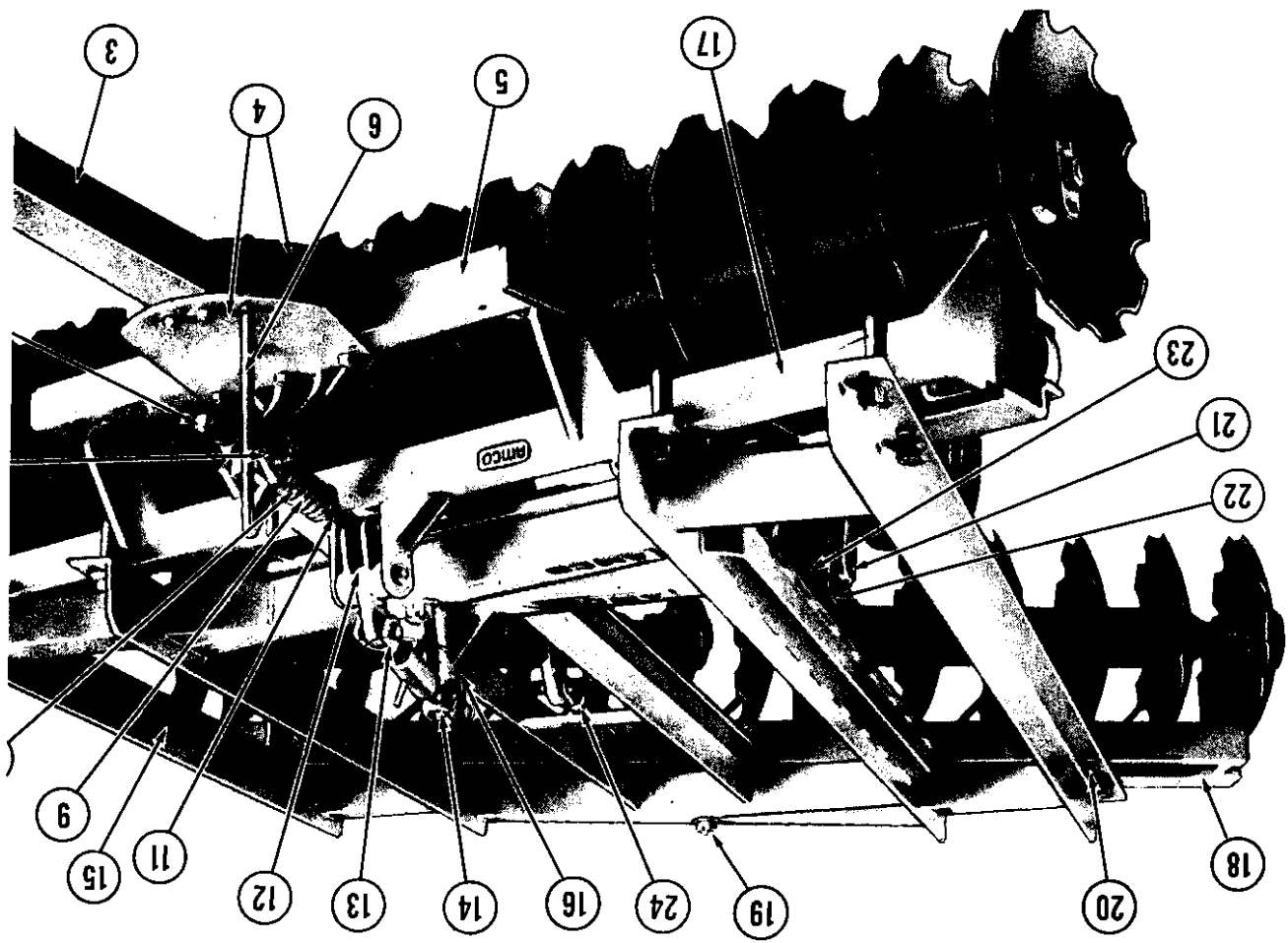
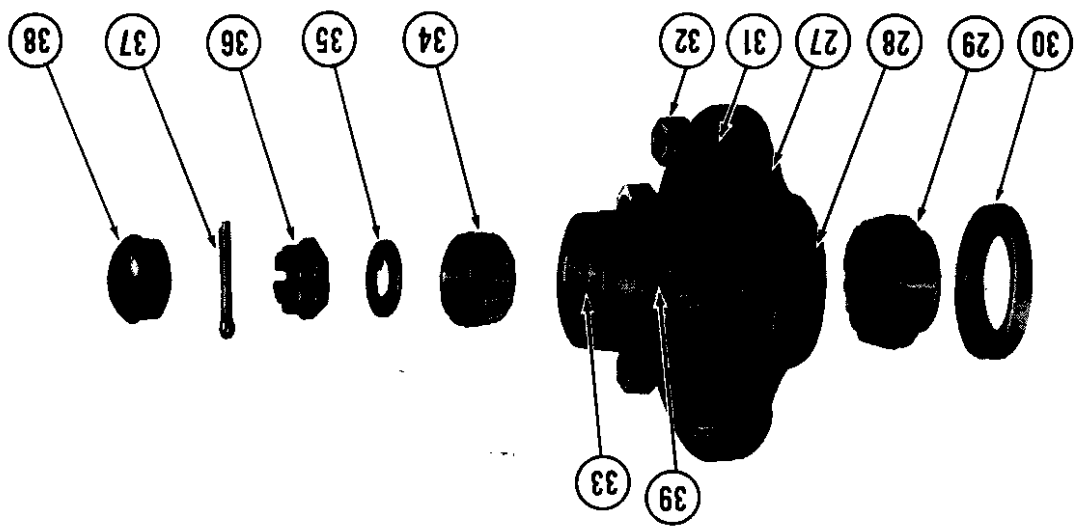
*Handwritten signature/initials*

*Handwritten signature/initials*

# Type Offset - WOF3 - WOF-11

WHEN ORDERING PARTS, PLEASE SPECIFY TYPE, MODEL, SERIAL NO.

Ref. No.	Description	Model WOF3		Model WOF3		Model WOF3		Model WOF3		Model WOF3		Model WOF3		Model WOF3	
		Part No.	Req.	Part No.	Req.	Part No.	Req.	Part No.	Req.	Part No.	Req.	Part No.	Req.	Part No.	Req.
22	Base Rockshaft Brg.	3426	2	3426	2	3426	2	3426	2	3426	2	3426	2	3426	2
23	Cap Rockshaft Brg.	3425	2	3425	2	3425	2	3425	2	3425	2	3425	2	3425	2
24	Machine Bolt - 7/8" x 7" USS	10431	4	10431	4	10431	4	10431	4	10431	4	10431	4	10431	4
	Lock Washer - 7/8"	10035	4	10035	4	10035	4	10035	4	10035	4	10035	4	10035	4
	Nut - Hex - 7/8" USS	10148	4	10148	4	10148	4	10148	4	10148	4	10148	4	10148	4
	Wheel Support	950	4	950	4	950	4	950	4	950	4	950	4	950	4
	Machine Bolt - 1" x 3" USS	11025	4	11025	4	11025	4	11025	4	11025	4	11025	4	11025	4
	Lock Washer - 1"	11027	8	11027	8	11027	8	11027	8	11027	8	11027	8	11027	8
	Nut - Hex - 1" USS	11026	8	11026	8	11026	8	11026	8	11026	8	11026	8	11026	8
24	Transport Bar	1443	1	1443	1	1443	1	1443	1	1443	1	1443	1	1443	1
	Rivet (Drilled) 3/4" x 2 1/2"	10019	1	10019	1	10019	1	10019	1	10019	1	10019	1	10019	1
	Rivet (Drilled) 3/4" x 3"	10052	1	10052	1	10052	1	10052	1	10052	1	10052	1	10052	1
	Cotter Pin - 1/4" x 1 1/2"	10075	2	10075	2	10075	2	10075	2	10075	2	10075	2	10075	2
25	Bearing Housing - Front Half	3428	8	3428	8	3428	8	3428	8	3428	8	3428	8	3428	8
26	Bearing Housing - Rear Half	3429	8	3429	8	3429	8	3429	8	3429	8	3429	8	3429	8
	Carriage Bolt - 5/8" x 2 1/2" SAE 10722	10183	16	10183	16	10183	16	10183	16	10183	16	10183	16	10183	16
	Lock Washer - 5/8" SAE	10010	16	10010	16	10010	16	10010	16	10010	16	10010	16	10010	16
	Nut - Hex - 5/8" SAE	10187	16	10187	16	10187	16	10187	16	10187	16	10187	16	10187	16
27	Hub W/2 Cups & 5 Lug Bolts	10351	4	10351	4	10351	4	10351	4	10351	4	10351	4	10351	4
28	Cup Inner (Timken - LM 48510)	10352	4	10352	4	10352	4	10352	4	10352	4	10352	4	10352	4
29	Cone Inner (Timken - LM 48548)	10353	4	10353	4	10353	4	10353	4	10353	4	10353	4	10353	4
30	Grease Seal - AFS 2130	11017	4	11017	4	11017	4	11017	4	11017	4	11017	4	11017	4
31	Hub Bolt	10354	20	10354	20	10354	20	10354	20	10354	20	10354	20	10354	20
32	Nut - Hub (FS 8320)	11046	20	11046	20	11046	20	11046	20	11046	20	11046	20	11046	20
33	Cup - Outer (LM 67010)	10293	4	10293	4	10293	4	10293	4	10293	4	10293	4	10293	4
	One - Outer (LM 67048)	10295	4	10295	4	10295	4	10295	4	10295	4	10295	4	10295	4
	Spindle Washer	10355	4	10355	4	10355	4	10355	4	10355	4	10355	4	10355	4
36	Spindle Nut - 3/4" SAE (Sorted)	10290	4	10290	4	10290	4	10290	4	10290	4	10290	4	10290	4
37	Cotter Pin - 3/16" x 1 1/2"	10027	4	10027	4	10027	4	10027	4	10027	4	10027	4	10027	4
38	Hub Cap	10356	4	10356	4	10356	4	10356	4	10356	4	10356	4	10356	4
39	Grease Fitting - Straight	10606	4	10606	4	10606	4	10606	4	10606	4	10606	4	10606	4
40	Gang Bolt	5623	2	5623	2	5623	2	5623	2	5623	2	5623	2	5623	2
41	Bumper Washer	3250	4	3250	4	3250	4	3250	4	3250	4	3250	4	3250	4
42	Blade - 2 1/2" Cut Out	3055	24	3055	24	3055	24	3055	24	3055	24	3055	24	3055	24
43	Blade - 16" Plain	3250	24	3250	24	3250	24	3250	24	3250	24	3250	24	3250	24
44	End Bell - Small	5483	8	5483	8	5483	8	5483	8	5483	8	5483	8	5483	8
44	Housing Bearing	G2668	8	G2668	8	G2668	8	G2668	8	G2668	8	G2668	8	G2668	8
45	Bearing - Anti-Friction (GW210PP3)	11071	8	11071	8	11071	8	11071	8	11071	8	11071	8	11071	8
46	Ring Retainer	11064	8	11064	8	11064	8	11064	8	11064	8	11064	8	11064	8
47	End Bell Large	5484	8	5484	8	5484	8	5484	8	5484	8	5484	8	5484	8
48	Spacer Spool (Fabricated)	545	12	545	12	545	12	545	12	545	12	545	12	545	12
48	End Gang Washer	1222	4	1222	4	1222	4	1222	4	1222	4	1222	4	1222	4
49	Lock Plate - Nut	5622	4	5622	4	5622	4	5622	4	5622	4	5622	4	5622	4
	Nut - Gang Bolt	10489	4	10489	4	10489	4	10489	4	10489	4	10489	4	10489	4
	Carr Bolt 7/16" x 1 1/2"	10068	8	10068	8	10068	8	10068	8	10068	8	10068	8	10068	8
	Lock Washer - 7/16"	10619	8	10619	8	10619	8	10619	8	10619	8	10619	8	10619	8
	Nut - Hex - 7/16"	10618	8	10618	8	10618	8	10618	8	10618	8	10618	8	10618	8
	Wheel - 15 x 5 - KDC - 5-Hole	10025	4	10025	4	10025	4	10025	4	10025	4	10025	4	10025	4
	Tire - 6:70 x 15 - 4-Ply - Imp.	11041	4	11041	4	11041	4	11041	4	11041	4	11041	4	11041	4
	Wheel - Rim - Inner - 4:00 x 9	11009	4	11009	4	11009	4	11009	4	11009	4	11009	4	11009	4
	Wheel - Rim - Outer - 4:00 x 9	11010	4	11010	4	11010	4	11010	4	11010	4	11010	4	11010	4
	Tire - 6:00 x 9 - Pneumatic	11011	4	11011	4	11011	4	11011	4	11011	4	11011	4	11011	4
	Tire - 6:00 x 9 - Laminated	10302	4	10302	4	10302	4	10302	4	10302	4	10302	4	10302	4



Rigid Frame



PARTS LIST

# Wheel Type Offset-WOF3

WHEN ORDERING PARTS,  
PLEASE SPECIFY  
TYPE, MODEL, SERIAL NO.

