

TYPE WOF5 - WOF6
Rigid Frame
Wheel Type Offset

PARTS LIST — Rigid Frame W

Ref. No.	Description	Model 1622,	WOF5 1624	Model 1822,	WOF5 1824	Model 2022,	WOF6 2024	Model 2222,	WOF6 2224
		Part No.	No. Req.	Part No.	No. Req.	Part No.	No. Req.	Part No.	No. Req.
1	Pull Tongue	1070	1	1070	1	1070	1	1070	1
2	Adj. Plate	5375	2	5375	2	5375	2	5375	2
	Machine Bolt — 3/4" x 4 1/2" USS	10048	4	10048	4	10048	4	10048	4
	Lock Washer — 3/4"	10002	4	10002	4	10002	4	10002	4
	Nut Hex — 3/4" USS	10143	4	10143	4	10143	4	10143	4
3	Cross Tongue	1082	1	1082	1	1082	1	1082	1
	Cap Screw — Hex. Hd. — 3/4" x 3" USS (Plated)	11024	2	11024	2	11024	2	11024	2
	Lock Washer — 3/4" (Plated)	10061	2	10061	2	10061	2	10061	2
	Nut — Hex 3/4" USS (Plated)	10072	2	10072	2	10072	2	10072	2
4	Hose Holder	102	1	102	1	102	1	102	1
	Cotter Pin — 1/4" x 1 1/2"	10075	1	10075	1	10075	1	10075	1
5	Stabilizer Rod	3008	1	3008	1	3008	1	3008	1
	Cotter Pin — 1/4" x 1 1/2"	10075	1	10075	1	10075	1	10075	1
	Machine Bolt — Hex Hd. — 5/8" x 3 3/4" USS	10241	1	10241	1	10241	1	10241	1
	Lock Washer — 5/8"	10010	1	10010	1	10010	1	10010	1
	Nut — Hex — 5/8" USS	11029	1	11029	1	11029	1	11029	1
6	Stabilizer Spring—2"—I. D. x 3"—O. D.—6" Long	10308	1	10308	1	10308	1	10308	1
7	Spring Guide Sleeve	773	1	773	1	773	1	773	1
8	Trunnion Stabilizer	774	1	774	1	774	1	774	1
	Machine Bolt — Hex Hd. — 5/8" x 1 1/2" (Plated)	10188	2	10188	2	10188	2	10188	2
	Lock Washer — 5/8" (Plated)	11002	2	11002	2	11002	2	11002	2
	Nut — Hex — 5/8" USS (Plated)	10139	2	10139	2	10139	2	10139	2
	Stop Stabilizer	775	1	775	1	775	1	775	1
9	Nut Adj. Stabilizer	776	1	776	1	776	1	776	1
10	Main Frame	1084	1	1084	1	1081	1	1081	1
11	Front Gang Frame	1089	1	1091	1	1079	1	1104	1
	Scraper Standard — RH	945	6	945	7	945	8	945	9
	Scraper End Special — RH	946	1	946	1	946	I	946	1
12	Rear Gang Frame	1090	1	1092	1	1080	1	1106	1
	Scraper Standard — LH	947	6	947	7	947	8	947	9
	Scraper End Special — LH	948	1	948	1	948	I	948	1
	Carriage Bolt — 7/16" x 1 1/2" USS	10068	28	10068	32	10068	36	10068	40
	Lock Washer — 7/16"	10619	28	10619	32	10619	36	10619	40
	Nut Hex — 7/16"	10618	28	10618	32	19618	36	10618	40
	Carriage Bolt — 3/4" x 5" USS					10594	4	10594	4
	Cut Washer — 1"					10090	4	10090	4
	Carriage Bolt — 3/4" x 5 1/2" USS					10654	2	10654	2
13	Carriage Bolt — 3/4" x 2" USS	10346	6	10346	6	10346	4	10346	4
	Lock Washer — 3/4"	10002	10	10002	10	10002	10	10002	10
	Nut — Hex 3/4" USS	10143	10	10143	10	10143	10	10143	10
14	"J" Bolt — 3/4" Dia.	4739	4	4739	4				
15	Rockshaft	1566	1	1566	1	1106	1	1106	1
16	Base Rockshaft Brg.	3005	4	3005	4	5753	2	5753	2
17	Cap Rockshaft Brg.	3004	4	3004	4	5754	2	5754	2
	Machine Bolt — 5/8" x 5 1/2" USS	10064	8	10064	8				
	Lock Washer — 5/8"	10010	8	10010	8				
	Nut — Hex — 5/8" USS	11029	8	11029	8				
	Wheel Support					950	2	950	2
	Machine Bolt — 1" x 3" USS					11025	4	11025	4
	Lock Washer — 1"					11027	4	11027	4
	Nut — Hex — 1" USS					11026	4	11026	4

Machine Bolt — 7/8" x 7"
 Lock Washer — 7/8"
 Nut — Hex — 7/8"
 4-Req. Each

(Continued on Next Page)

el Type Offset — WOF5-WOF6

WHEN ORDERING PARTS,
PLEASE SPECIFY
TYPE, MODEL, SERIAL NO.

Ref. No.	Description	Model WOF5 1622, 1624		Model WOF5 1822, 1824		Model WOF6 2022, 2024		Model WOF6 2222, 2224	
		Part No.	No. Req.	Part No.	No. Req.	Part No.	No. Req.	Part No.	No. Req.
18	Transport Bar	1071	1	1071	1	1071	1	1071	1
	Rivet (Drilled) 5/8" x 2 1/2"	10031	1	10031	1	10031	1	10031	1
	Cotter Pin — 1/4" x 1 1/2"	10075	2	10075	2	10075	2	10075	2
19	Bearing Housing — Front Half	6397	4	6397	6	6397	8	6397	8
20	Bearing Housing — Rear Half	6398	4	6398	6	6398	8	6398	8
	Carriage Bolt 3/4" x 2 1/2 2 3/4" SAE HT	10579	8	10579	12	10579	16	10579	16
	Lock Washer — 3/4"	10002	8	10002	12	10002	16	10002	16
	Nut — Hex — 3/4" SAE CH	10585	8	10585	12	10585	16	10585	16
21	Hub W/2 Cups & 5 Lug Bolts	10581	2	10581	2	10254	2	10254	2
22	Cup Inner	10352	2	10352	2	10257	2	10257	2
23	Cone Inner	10353	2	10352	2	10258	2	10258	2
24	Grease Seal	10582	2	10582	2	10256	2	10256	2
25	Hub Bolt	10354	10	10354	10	10259	12	10259	12
26	Nut — Hub (FS 8320)	11046	10	11046	10				
27	Cup — Outer	10293	2	10293	2	10261	2	10261	2
28	Cone — Outer	10295	2	10295	2	10262	2	10262	2
29	Spindle Washer	10263	2	10263	2	10263	2	10263	2
30	Spindle Nut — 3/4" SAE (Slotted)	10264	2	10264	2	10264	2	10264	2
31	Cotter Pin — 3/16" x 1 1/2"	10027	2	10027	2	10027	2	10027	2
32	Hub Cap	10356	2	10356	2	10242	2	10242	2
33	Grease Fitting — Straight	10606	2	10606	2	10606	2	10606	2
35	Gang Bolt	5624	2	6679	2	3823	4	3823	2
	Gang Bolt							5644	2
36	Bumper Washer	2386	2	2386	2	2386	4	2386	4
37	Blade — 24" Cut Out	3250	16	3250	18	3250	20	3250	22
	Blade — 16" Plain	3055	16	3055	18	3055	20	3055	22
38	End Bell — Small	5483	4	5483	6	5483	8	5483	8
39	Housing Bearing	G2668	4	G2668	6	G2668	8	G2668	8
40	Bearing — Anti-Friction (GW210PP3)	G11071	4	G11071	6	G11071	8	G11071	8
41	Ring Retainer	11064	4	11064	6	11064	8	11064	8
42	End Bell Large	5484	4	5484	6	5484	8	5484	8
43	Spacer Spool	545	10	545	10	545	8	545	10
44	End Gang Washer	1222	2	1222	2	1222	4	1222	4
	Lock Plate	5622	2	5622	2	5622	4	5622	4
	Carr. Bolt 7/16" x 1 1/2"	10068	4	10068	4	10068	8	10068	8
	Lock Washer 7/16"	10619	4	10619	4	10619	8	10619	8
	Hex Nut — 7/16"	10618	4	10618	4	10618	8	10618	8
45	Nut — Gang Bolt	10489	4	10489	4	10489	8	10489	8
	Grease Fitting 1/8" Straight	10606	4	10606	6	10606	8	10606	8
— OPTIONAL PARTS —									
	Wheel	10025	2	10025	2	10481	2	10481	2
	Tire — 6:70 x 15 — 4-Ply — Imp.	11041	2	11041	2				
	Tube — 6:70 x 15	11040	2	11040	2				
	Wheel — Rim — Inner — 4:00 x 9	11009	2	11009	2				
	Wheel — Rim — Outer — 4:00 x 9	11010	2	11010	2				
	Tire — 6:00 x 9 — Pneumatic	11011	2	11011	2				
	Tire — 6:00 x 9 — Laminated	10302	2	10302	2				
	Tube — 6:00 x 9	11012	2	11012	2				

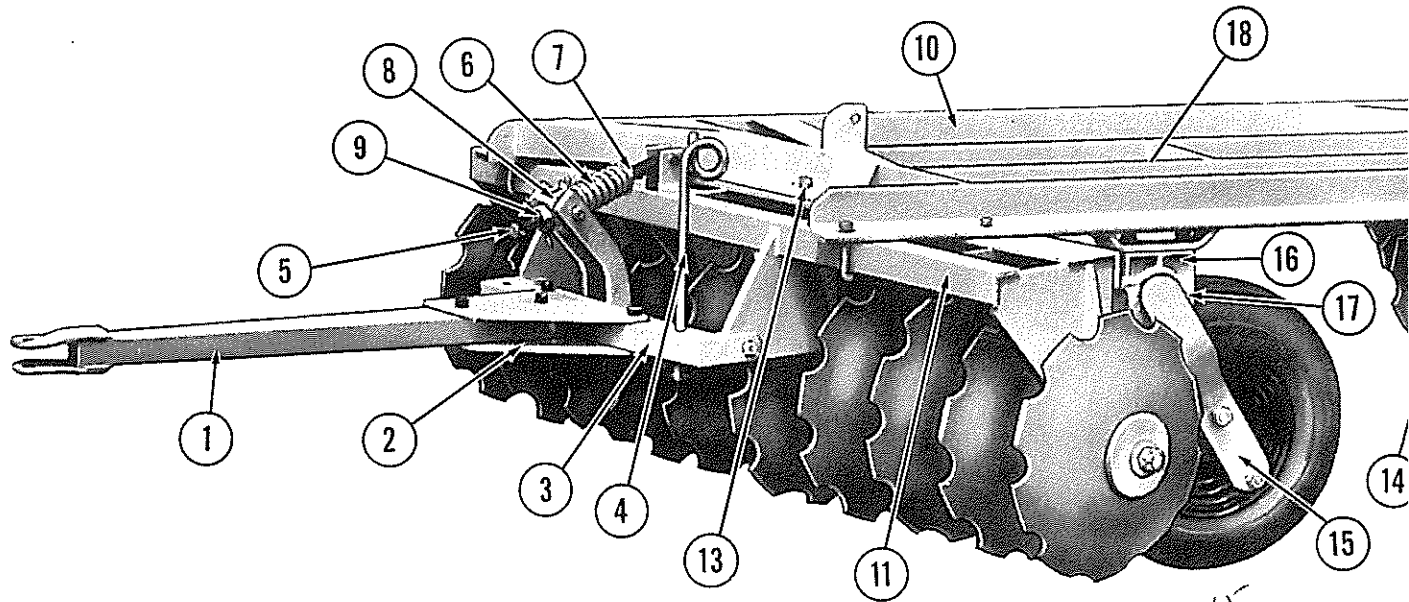
ALEXANDER MANUFACTURING COMPANY

NO. 1 AMCO DRIVE

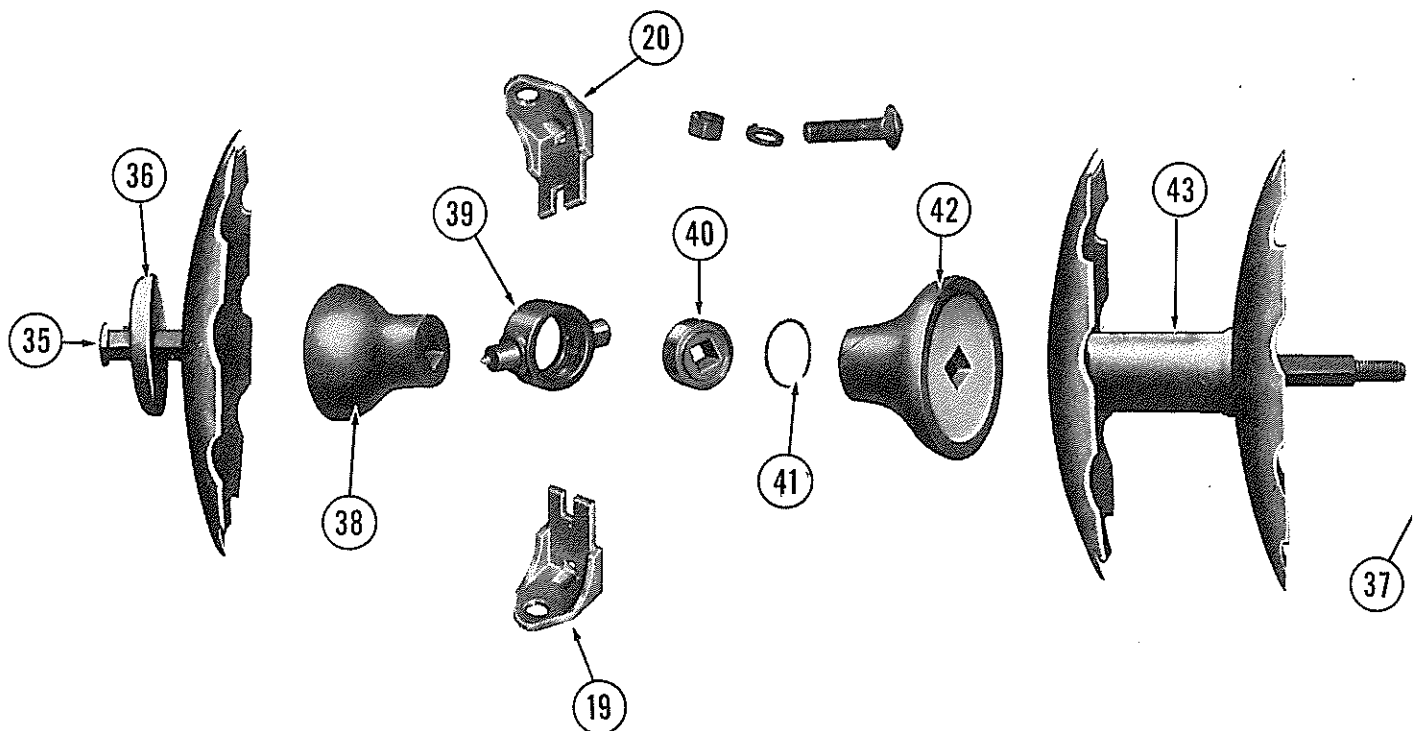
PHONE 746-4464

YAZOO CITY, MISS.—U.S.A.

PARTS LIST **AMCO** Rigid Frame Wh

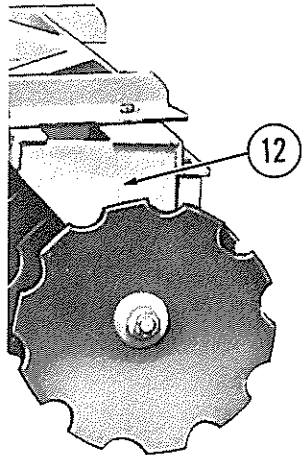


570 x 15
700 x 15

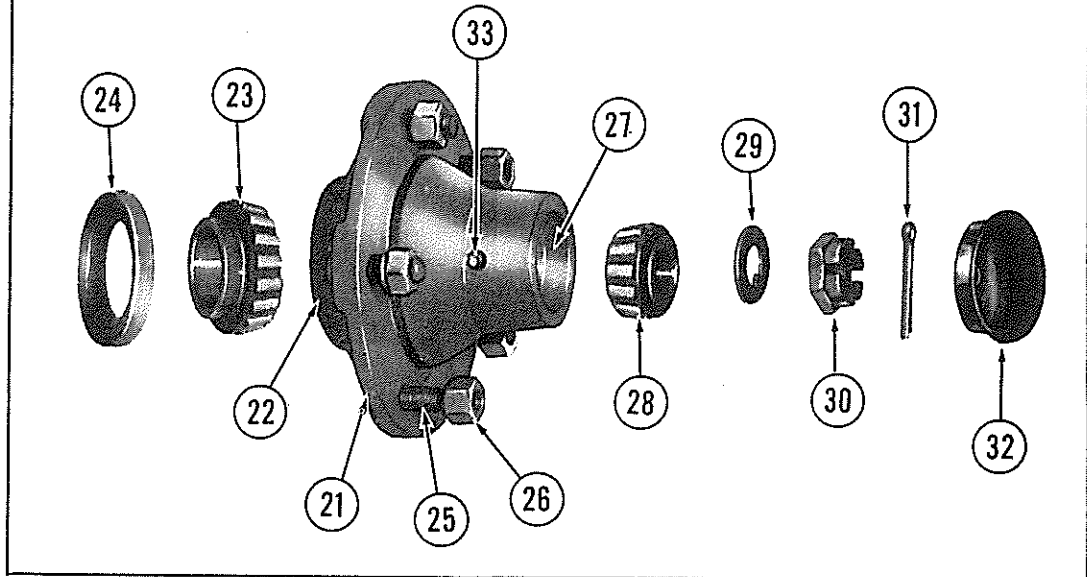


el Type Offset — WOF5-WOF6

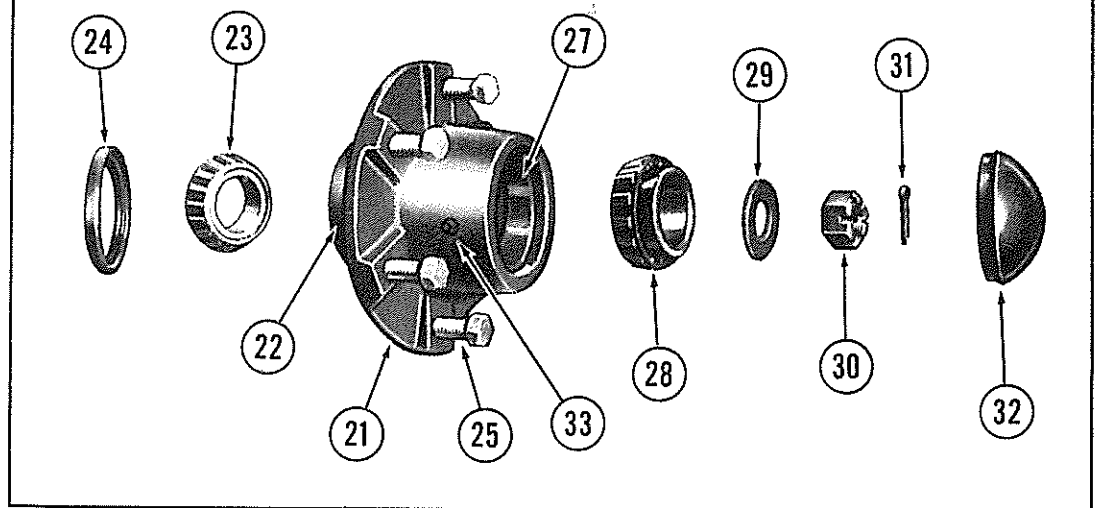
WHEN ORDERING PARTS,
PLEASE SPECIFY
TYPE, MODEL, SERIAL NO.



WOF5—6' 0" & 6' 9" MODELS



WOF6—7' 6" & 8' 3" MODELS



ALEXANDER MFG. CO.

NO. 1 AMCO DRIVE

TELEPHONE 746-4464

YAZOO CITY, MISSISSIPPI