



**MANUFACTURING, INC.**



**Maintenance-Free  
Gang Bearings**



## **F15 DOUBLE OFFSET FLEXWING TANDEM DISC HARROWS**

Create a berm-free seedbed with AMCO flexwings.

The F15 Double Offset Tandem Disc Harrow utilizes folding flexwings to follow the contour of the field and a double offset tandem design to smooth the soil. Overlapping front discs cut through soil and residue, while the flow of soil off the staggered rear disc gangs fills in the center furrow. This results in a more even performance and the perfect seedbed—without the need for a shank to level off the center.

Use the F15 for primary or secondary tillage, seedbed prep, or incorporation of chemicals. Turn it loose in your heavier primary tillage situations or to incorporate residue—including residue from cover crops—for faster breakdown.

We offer different models for a wide range of operations. All are field-tested and proven tough: 9" spacing; 16'6", 18'0", 19'6", 21'0", 24'0", 27'0", 30'0", 34'6", and 39'0" cutting widths.



**TAKE A  
CLOSER LOOK:  
DOUBLE OFFSET  
FLEXWING TANDEM  
DISC HARROW**

*Below: Turnbuckle rod allows adjustments to ensure level cutting. Adapts to various tire sizes and provides level transport.*



*Left: Front-wing depth gauge wheels assist with controlled depth of the wings at higher operation speeds.*



*Below: Safety lights, SMV signage, and safety chain are standard.*



*Below: Double offset tandem design with diminishing blades in the center ensures dirt work is complete across the tool.*

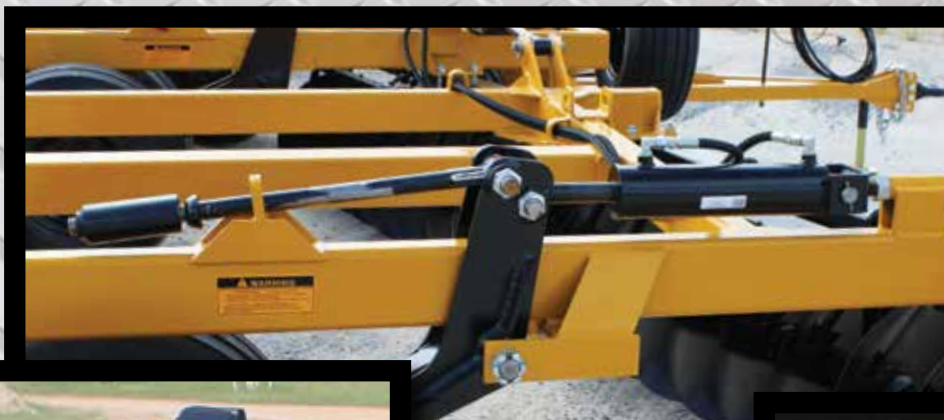


*Above: 90° tongue features jack and adjustable clevis.*





*Below:  
Transport  
lockout pin  
ensures safe  
road travel.*



*Left: Mechanical DIAL-A-DEPTH gauge control arms ensure an even depth, providing more accuracy. Easily adjust cutting depth in the field with the 4" x 24" hydraulic cylinders (3,000 PSI).*



*Right: Bearing risers for built-in durability. Standard 24" smooth blades provide clean cutting through soil and residue. Other sizes available.*



## STANDARD FEATURES

- › Disc gangs feature maintenance-free bearings with three-year warranty; bearings eliminate possibility of contamination and need for re-lubrication
- › 1½" square cold-rolled, high-carbon steel axles
- › All models feature smooth blades with two feathering blades on the rear gangs
- › Diminishing blades in the center of the double offset tandem design achieve a berm-free, level seedbed with no additional tools required
- › ¾" x 6½" x 8", high-carbon steel, replaceable, adjustable scraper blades mounted on bars of 2½" x 2½" square tubing. The scrapers are attached to the 2½" x ½" thick arms with heavy-duty u-bolts
- › Hydraulic hoses complete to front of main frame
- › 15" x 10" 8-hole wheels and 8-hole hubs are standard equipment on 94-blade and 106-blade models (center section only)
- › 90" tongue with jack enables sharper turns on dual-wheel tractors
- › Adjustable clevis of ductile iron with transport adapter
- › Heavy-duty 3,000 PSI hydraulic cylinders to adjust cutting depth and raise the disc for transport
- › DIAL-A-DEPTH depth control, allowing an even cut with positive depth control the entire width of the harrow

**Optional equipment:** Shock Absorber Bearing Risers allow the gang on the harrow to travel up and down to relieve shock when the disc blades encounter an unexpected obstacle in the ground (available on all models).

15" x 10" 8-hole wheels and 8-hole hubs are optional on 66-blade, 74-blade, and 82-blade models (center section only).



**PRODUCT PERFORMANCE GUARANTEE—Repair, Replace, or Refund: AMCO Guarantees Performance.** The best tillage tools deserve the best guarantee. The AMCO guarantee is simple. If, during the first 30 days, your AMCO equipment doesn't perform as promised, and if we don't make it perform in a reasonable amount of time, we'll repair it, replace it, or buy it back.

## Double Offset Flexwing Tandem Disc Harrows

Model	Cutting Width	Transport Width	Transport Height	No. of Disc Blades	No. of Bearings	Approx. Engine HP Required	Approx. Weight lbs.*
<b>Workhorse</b>							
F15B-4622	16'6"	12'6"	12'6"	46	16	155-176	6,705
F15B-5022	18'0"	12'6"	12'6"	50	16	162-189	7,419
F15B-5422	19'6"	12'6"	12'6"	54	16	169-203	7,623
F15B-5822	21'0"	12'6"	12'6"	58	16	182-223	8,346
F15B-6622	24'0"	12'6"	12'6"	66	20	202-243	9,306
<b>Heavy Duty</b>							
F15-6624	24'0"	14'6"	11'0"	66	20	243-297	11,591
F15-7424	27'0"	14'6"	12'0"	74	22	243-297	12,283
F15-8224	30'0"	14'6"	13'3"	82	22	256-318	12,935
<b>Giant</b>							
F15-9424	34'6"	17'6"	14'0"	94	26	310-378	15,423
F15-10624	39'0"	17'6"	15'9"	106	30	337-405	16,671

\*To calculate weight/blade, divide the approximate weight of the model by the number of disc blades.  
Specifications for all models subject to change without notice.



**MANUFACTURING, INC.**

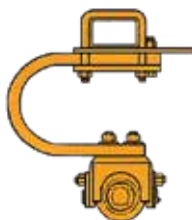
800 S. Industrial Parkway  
P. O. Box 1107  
Yazoo City, MS 39194

Toll free: 800-748-9022  
662-746-4464  
Fax: 662-746-6825

Web: [www.amcomfg.com](http://www.amcomfg.com)  
Facebook: [www.facebook.com/AMCOManufacturingInc](http://www.facebook.com/AMCOManufacturingInc)  
Email: [sales@amcomfg.com](mailto:sales@amcomfg.com)

## SHOCK ABSORBER BEARING RISER

An Unbeatable Solution For Work In Rough Terrain



Our Shock Absorber Bearing Riser allows the gang on the harrow to move upward and back to relieve shock when the disc blades encounter an obstacle in the ground.



**TOUGH  
TILLAGE  
TOOLS**