

AMCO

MANUFACTURING, INC.



Maintenance-Free
Gang Bearings

F15B DOUBLE OFFSET FLEXWING TANDEM DISC HARROW

A compact folding disc that packs a punch.

AMCO's F15B features folding wings that flex and follow the contour of the field, effortlessly smoothing the soil to create the perfect, berm-free seedbed. This compact folding disc harrow model packs just as much punch as AMCO's larger disc harrows, giving farmers the benefits of a smaller harrow without sacrificing performance and results.

- › Disc gangs feature maintenance-free bearings with three-year warranty; bearings eliminate possibility of contamination and need for re-lubrication
- › Offered in cutting widths from 16'6" to 24'0"
- › $\frac{3}{16}$ " x 6 $\frac{1}{2}$ " x 8", high-carbon steel, replaceable, adjustable scraper blades mounted on bars of 2 $\frac{1}{2}$ " x 2 $\frac{1}{2}$ " square tubing. The scrapers are attached to the 2 $\frac{1}{2}$ " x $\frac{1}{2}$ " thick arms with heavy-duty u-bolts
- › Weighs 6,705 to 9,306 pounds
- › Folds to transport width of 12'6" for easier road transport
- › At 122 to 140 pounds per blade, the F15B offers excellent soil penetration
- › Overlapping front disc blades give 100% tillage across the unit

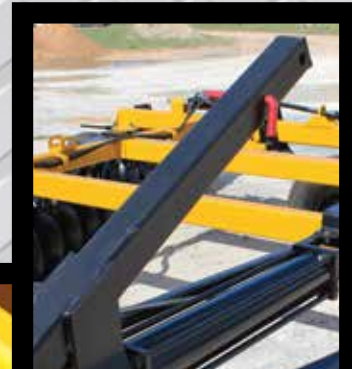
FEATURES



PRODUCT PERFORMANCE GUARANTEE—Repair, Replace, or Refund: AMCO Guarantees Performance. The best tillage tools deserve the best guarantee. The AMCO guarantee is simple. If, during the first 30 days, your AMCO equipment doesn't perform as promised, and if we don't make it perform in a reasonable amount of time, we'll repair it, replace it, or buy it back.



Left: Safety lights, SMV signage, and safety chain are standard.



Left: Transport lockout pin ensures safe road travel.

Right: Turnbuckle rod allows adjustments to ensure level cutting. Adapts to various tire sizes and provides level transport.



Above: Bearing risers for built-in durability. Standard 22" smooth blades provide clean cutting through soil and residue. Other sizes available.



Left: 90° tongue features jack and adjustable clevis.



MANUFACTURING, INC.

800 S. Industrial Parkway
P. O. Box 1107
Yazoo City, MS 39194

Toll free: 800-748-9022
662-746-4464
Fax: 662-746-6825

Web: www.amcomfg.com
Facebook: www.facebook.com/AMCOManufacturingInc
Email: sales@amcomfg.com

F15B Double Offset Flexwing Tandem Disc Harrows

Model	Cutting Width	Transport Width	Transport Height	No. of Disc Blades	No. of Bearings	Approx. Engine HP Required	Approx. Weight lbs.*
F15B-4622	16'6"	12'6"	12'6"	46	16	155-176	6,705
F15B-5022	18'0"	12'6"	12'6"	50	16	162-189	7,419
F15B-5422	19'6"	12'6"	12'6"	54	16	169-203	7,623
F15B-5822	21'0"	12'6"	12'6"	58	16	182-223	8,346
F15B-6622	24'0"	12'6"	12'6"	66	20	202-243	9,306

*To calculate weight/blade, divide the approximate weight of the model by the number of disc blades. Specifications for all models subject to change without notice.



TOUGH TILLAGE TOOLS